


1986 Lake Ridge Boulevard, Woodlake, Clearwater, Pinellas County, Florida, United States, 33763



Property summary


 **1** Garages

 **3** Bedrooms

 **2** Bathrooms

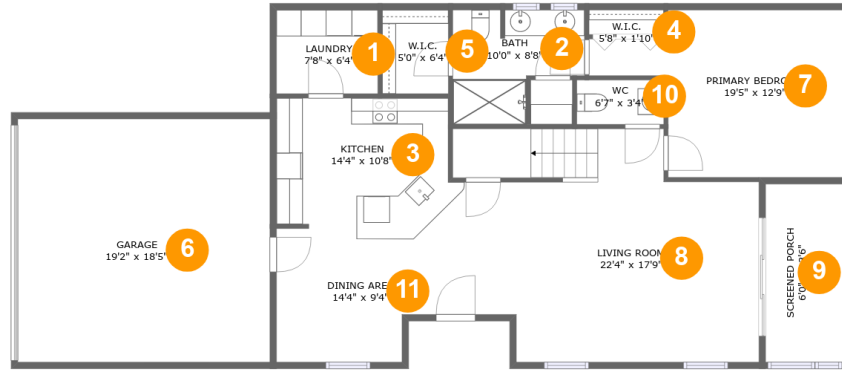
 **1** Half baths

 **2** Floors

 **2,116** Gross living area sqft

 **3,002** Total sqft

1986 Lake Ridge Boulevard, Woodlake, Clearwater, Pinellas County, Florida, United States, 33763



Room dimensions

Floor 1

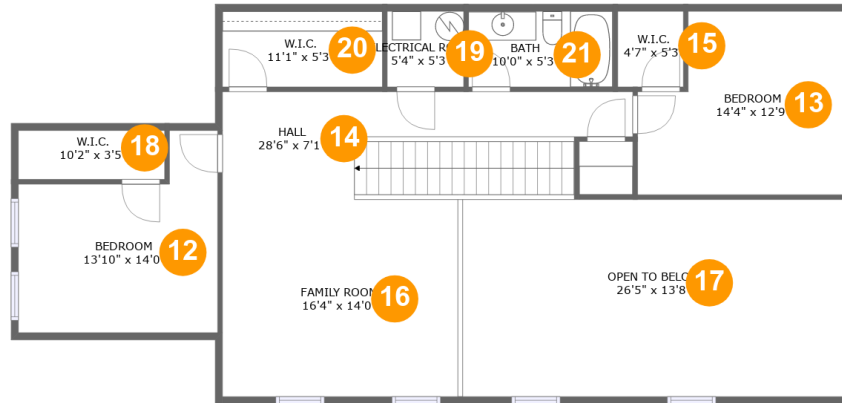
Total sqft: 1580 Living area: 1106

#		Dimensions	sqft	Counted as living area
1	Laundry	7'8" x 6'4"	49 sq. ft	Yes
2	Bath	10'0" x 8'8"	70 sq. ft	Yes
3	Kitchen	14'4" x 10'8"	144 sq. ft	Yes
4	W.I.C.	5'8" x 1'10"	11 sq. ft	Yes
5	W.I.C.	5'0" x 6'4"	32 sq. ft	Yes
6	Garage	19'2" x 18'5"	354 sq. ft	No
7	Primary Bedroom	19'5" x 12'9"	187 sq. ft	Yes
8	Living Room	22'4" x 17'9"	333 sq. ft	Yes
9	Screened Porch	6'0" x 13'6"	81 sq. ft	No
10	WC	6'7" x 3'4"	22 sq. ft	Yes
11	Dining Area	14'4" x 9'4"	116 sq. ft	Yes

Scan captured on Sat, 15 Feb 2025 14:11:51 GMT

Information is calculated by Cubicasa technology deemed highly reliable but not guaranteed.

1986 Lake Ridge Boulevard, Woodlake, Clearwater, Pinellas County, Florida, United States, 33763



Room dimensions

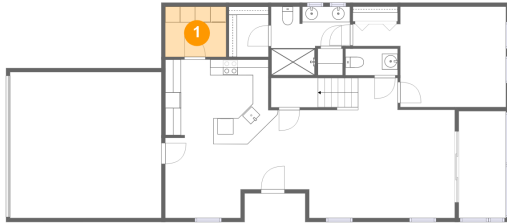
Floor 2

Total sqft: 1422 Living area: 1010

#		Dimensions	sqft	Counted as living area
12	Bedroom	13'10" x 14'0"	155 sq. ft	Yes
13	Bedroom	14'4" x 12'9"	162 sq. ft	Yes
14	Hall	28'6" x 7'1"	182 sq. ft	Yes
15	W.I.C.	4'7" x 5'3"	24 sq. ft	Yes
16	Family Room	16'4" x 14'0"	227 sq. ft	Yes
17	Open To Below	26'5" x 13'8"	362 sq. ft	No
18	W.I.C.	10'2" x 3'5"	34 sq. ft	Yes
19	Electrical Room	5'4" x 5'3"	28 sq. ft	No
20	W.I.C.	11'1" x 5'3"	58 sq. ft	Yes
21	Bath	10'0" x 5'3"	53 sq. ft	Yes

1986 Lake Ridge Boulevard, Woodlake, Clearwater, Pinellas County, Florida, United States, 33763

1 Floor 1 - Laundry



Dimensions: 7'8" x 6'4"
Area: 49 sq. ft
Counted as living area: Yes

Heated: Yes
Finished: Yes
Enclosed: Yes
Contiguous: Yes
Permitted: Yes
Wet space: No
Addition: No
Conversion: No

2 Floor 1 - Bath



Dimensions: 10'0" x 8'8"
Area: 70 sq. ft
Counted as living area: Yes

Heated: Yes
Finished: Yes
Enclosed: Yes
Contiguous: Yes
Permitted: Yes
Wet space: Yes
Addition: No
Conversion: No

1986 Lake Ridge Boulevard, Woodlake, Clearwater, Pinellas County, Florida, United States, 33763

3 Floor 1 - Kitchen



Dimensions: 14'4" x 10'8"
Area: 144 sq. ft
Counted as living area: Yes

Heated: Yes
Finished: Yes
Enclosed: Yes
Contiguous: Yes
Permitted: Yes
Wet space: No
Addition: No
Conversion: No

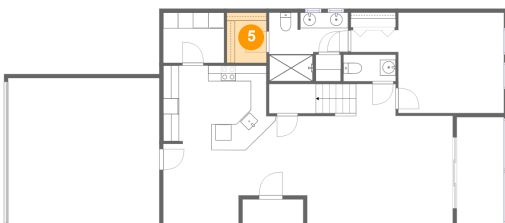
4 Floor 1 - W.I.C.



Dimensions: 5'8" x 1'10"
Area: 11 sq. ft
Counted as living area: Yes

Heated: Yes
Finished: Yes
Enclosed: Yes
Contiguous: Yes
Permitted: Yes
Wet space: No
Addition: No
Conversion: No

5 Floor 1 - W.I.C.



Dimensions: 5'0" x 6'4"
Area: 32 sq. ft
Counted as living area: Yes

Heated: Yes
Finished: Yes
Enclosed: Yes
Contiguous: Yes
Permitted: Yes
Wet space: No
Addition: No
Conversion: No

1986 Lake Ridge Boulevard, Woodlake, Clearwater, Pinellas County, Florida, United States, 33763

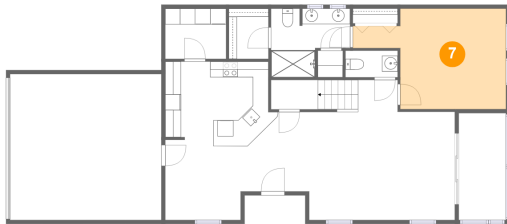
6 Floor 1 - Garage



Dimensions: 19'2" x 18'5"
Area: 354 sq. ft
Counted as living area: No

Heated: No
Finished: Yes
Enclosed: Yes
Contiguous: Yes
Permitted: Yes
Wet space: No
Addition: No
Conversion: No

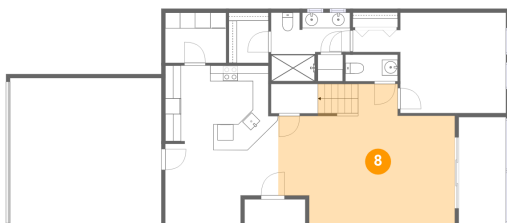
7 Floor 1 - Primary Bedroom



Dimensions: 19'5" x 12'9"
Area: 187 sq. ft
Counted as living area: Yes

Heated: Yes
Finished: Yes
Enclosed: Yes
Contiguous: Yes
Permitted: Yes
Wet space: No
Addition: No
Conversion: No

8 Floor 1 - Living Room

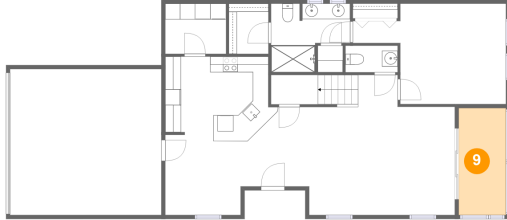


Dimensions: 22'4" x 17'9"
Area: 333 sq. ft
Counted as living area: Yes

Heated: Yes
Finished: Yes
Enclosed: Yes
Contiguous: Yes
Permitted: Yes
Wet space: No
Addition: No
Conversion: No

1986 Lake Ridge Boulevard, Woodlake, Clearwater, Pinellas County, Florida, United States, 33763

9 Floor 1 - Screened Porch



Dimensions: 6'0" x 13'6"
Area: 81 sq. ft
Counted as living area: No

Heated: No
Finished: Yes
Enclosed: No
Contiguous: Yes
Permitted: Yes
Wet space: No
Addition: No
Conversion: No

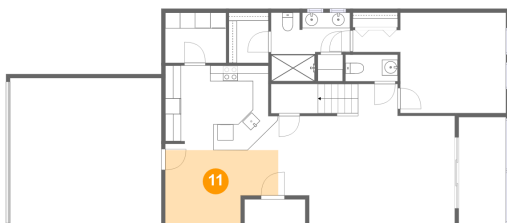
10 Floor 1 - WC



Dimensions: 6'7" x 3'4"
Area: 22 sq. ft
Counted as living area: Yes

Heated: Yes
Finished: Yes
Enclosed: Yes
Contiguous: Yes
Permitted: Yes
Wet space: Yes
Addition: No
Conversion: No

11 Floor 1 - Dining Area



Dimensions: 14'4" x 9'4"
Area: 116 sq. ft
Counted as living area: Yes

Heated: Yes
Finished: Yes
Enclosed: Yes
Contiguous: Yes
Permitted: Yes
Wet space: No
Addition: No
Conversion: No

1986 Lake Ridge Boulevard, Woodlake, Clearwater, Pinellas County, Florida, United States, 33763

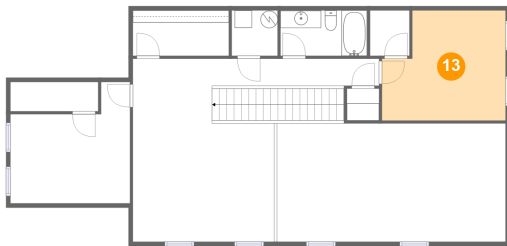
12 Floor 2 - Bedroom



Dimensions: 13'10" x 14'0"
Area: 155 sq. ft
Counted as living area: Yes

Heated: Yes
Finished: Yes
Enclosed: Yes
Contiguous: Yes
Permitted: Yes
Wet space: No
Addition: No
Conversion: No

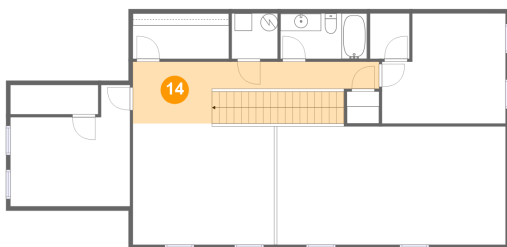
13 Floor 2 - Bedroom



Dimensions: 14'4" x 12'9"
Area: 162 sq. ft
Counted as living area: Yes

Heated: Yes
Finished: Yes
Enclosed: Yes
Contiguous: Yes
Permitted: Yes
Wet space: No
Addition: No
Conversion: No

14 Floor 2 - Hall



Dimensions: 28'6" x 7'1"
Area: 182 sq. ft
Counted as living area: Yes

Heated: Yes
Finished: Yes
Enclosed: Yes
Contiguous: Yes
Permitted: Yes
Wet space: No
Addition: No
Conversion: No

**1986 Lake Ridge Boulevard, Woodlake, Clearwater,
Pinellas County, Florida, United States, 33763**

15 Floor 2 - W.I.C.



Dimensions: 4'7" x 5'3"
Area: 24 sq. ft
Counted as living area: Yes

Heated: Yes
Finished: Yes
Enclosed: Yes
Contiguous: Yes
Permitted: Yes
Wet space: No
Addition: No
Conversion: No

16 Floor 2 - Family Room



Dimensions: 16'4" x 14'0"
Area: 227 sq. ft
Counted as living area: Yes

Heated: Yes
Finished: Yes
Enclosed: Yes
Contiguous: Yes
Permitted: Yes
Wet space: No
Addition: No
Conversion: No

17 Floor 2 - Open To Below

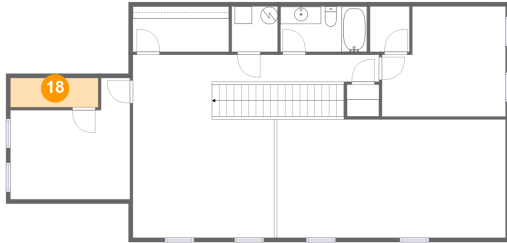


Dimensions: 26'5" x 13'8"
Area: 362 sq. ft
Counted as living area: No

Heated: No
Finished: No
Enclosed: No
Contiguous: Yes
Permitted: No
Wet space: No
Addition: No
Conversion: No

1986 Lake Ridge Boulevard, Woodlake, Clearwater, Pinellas County, Florida, United States, 33763

18 Floor 2 - W.I.C.



Dimensions: 10'2" x 3'5"
Area: 34 sq. ft
Counted as living area: Yes

Heated: Yes
Finished: Yes
Enclosed: Yes
Contiguous: Yes
Permitted: Yes
Wet space: No
Addition: No
Conversion: No

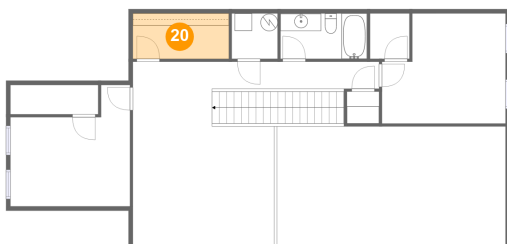
19 Floor 2 - Electrical Room



Dimensions: 5'4" x 5'3"
Area: 28 sq. ft
Counted as living area: No

Heated: No
Finished: Yes
Enclosed: Yes
Contiguous: Yes
Permitted: Yes
Wet space: No
Addition: No
Conversion: No

20 Floor 2 - W.I.C.



Dimensions: 11'1" x 5'3"
Area: 58 sq. ft
Counted as living area: Yes

Heated: Yes
Finished: Yes
Enclosed: Yes
Contiguous: Yes
Permitted: Yes
Wet space: No
Addition: No
Conversion: No

**1986 Lake Ridge Boulevard, Woodlake, Clearwater,
Pinellas County, Florida, United States, 33763**

21 Floor 2 - Bath



Dimensions: 10'0" x 5'3"
Area: 53 sq. ft
Counted as living area: Yes

Heated: Yes
Finished: Yes
Enclosed: Yes
Contiguous: Yes
Permitted: Yes
Wet space: Yes
Addition: No
Conversion: No