




4232 Nepal Drive, Hermitage, Davidson County,
Tennessee, United States, 37076




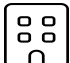
Property summary


 **1** Garages


 **3** Bedrooms

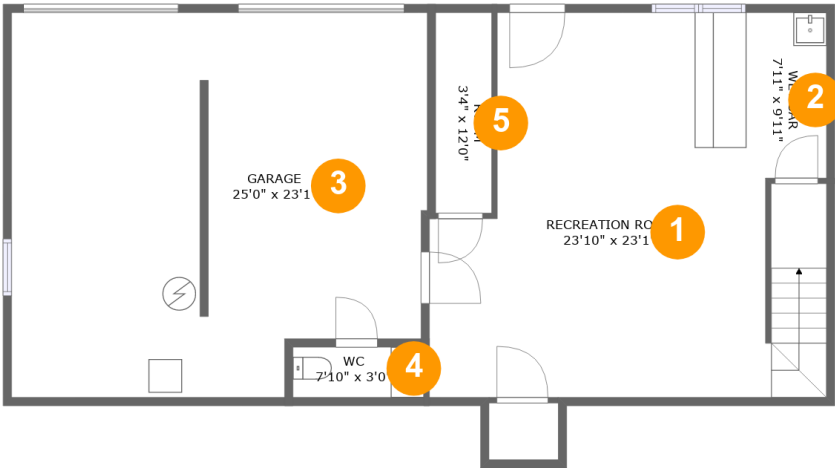
 **1** Bathrooms

 **2** Half baths

 **2** Floors

 **1,804** Gross living area sqft

 **2,427** Total sqft



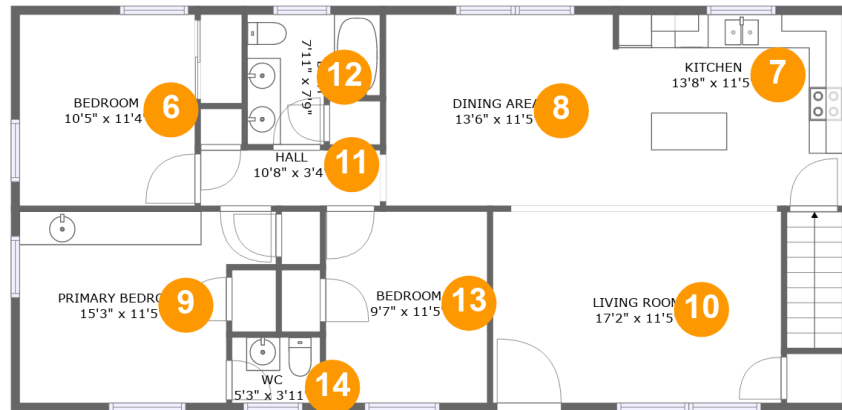
Room dimensions

Floor 1

Total sqft: 1223 Living area: 613

#		Dimensions	sqft	Counted as living area
1	Recreation Room	23'10" x 23'1"	418 sq. ft	Yes
2	Bar	7'11" x 9'11"	78 sq. ft	Yes
3	Garage	25'0" x 23'1"	544 sq. ft	No
4	Bath	7'10" x 3'0"	24 sq. ft	No
5	Room	3'4" x 12'0"	41 sq. ft	Yes

**4232 Nepal Drive, Hermitage, Davidson County,
Tennessee, United States, 37076**



Room dimensions

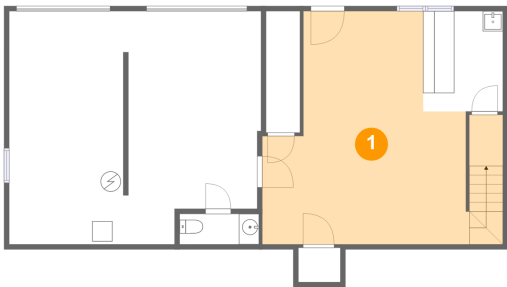
Floor 2

Total sqft: 1204 Living area: 1191

#		Dimensions	sqft	Counted as living area
6	Bedroom	10'5" x 11'4"	119 sq. ft	Yes
7	Kitchen	13'8" x 11'5"	155 sq. ft	Yes
8	Dining Room	13'6" x 11'5"	154 sq. ft	Yes
9	Bedroom	15'3" x 11'5"	149 sq. ft	Yes
10	Living Room	17'2" x 11'5"	195 sq. ft	Yes
11	Hall	10'8" x 3'4"	35 sq. ft	Yes
12	Bath	7'11" x 7'9"	51 sq. ft	Yes
13	Bedroom	9'7" x 11'5"	109 sq. ft	Yes
14	Bath	5'3" x 3'11"	20 sq. ft	Yes

4232 Nepal Drive, Hermitage, Davidson County,
Tennessee, United States, 37076

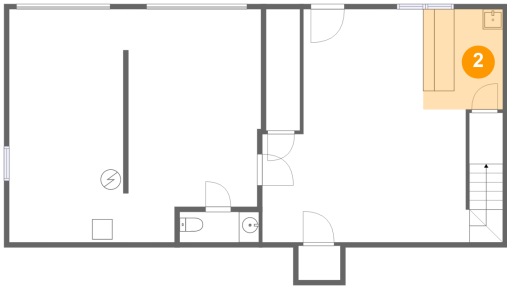
1 Floor 1 - Recreation Room



Dimensions: 23'10" x 23'1"
Area: 418 sq. ft
Counted as living area: Yes

Heated: Yes
Finished: Yes
Enclosed: Yes
Contiguous: Yes
Permitted: Yes
Wet space: No
Addition: No
Conversion: No

2 Floor 1 - Bar

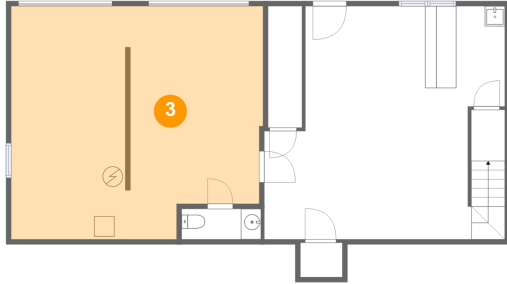


Dimensions: 7'11" x 9'11"
Area: 78 sq. ft
Counted as living area: Yes

Heated: Yes
Finished: Yes
Enclosed: Yes
Contiguous: Yes
Permitted: Yes
Wet space: No
Addition: No
Conversion: No

**4232 Nepal Drive, Hermitage, Davidson County,
Tennessee, United States, 37076**

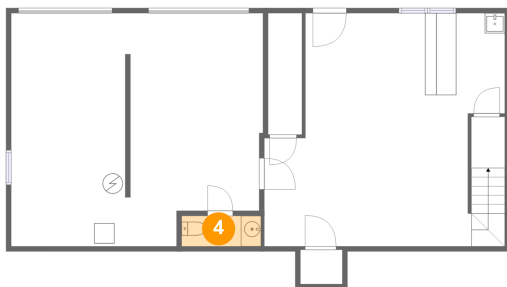
3 Floor 1 - Garage



Dimensions: 25'0" x 23'1"
Area: 544 sq. ft
Counted as living area: No

Heated: No
Finished: No
Enclosed: Yes
Contiguous: Yes
Permitted: Yes
Wet space: No
Addition: No
Conversion: No

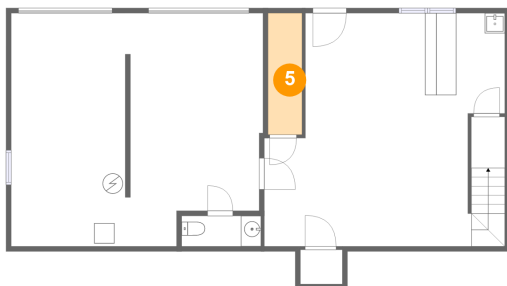
4 Floor 1 - Bath



Dimensions: 7'10" x 3'0"
Area: 24 sq. ft
Counted as living area: No

Heated: Yes
Finished: Yes
Enclosed: Yes
Contiguous: No
Permitted: Yes
Wet space: Yes
Addition: No
Conversion: No

5 Floor 1 - Room



Dimensions: 3'4" x 12'0"
Area: 41 sq. ft
Counted as living area: Yes

Heated: Yes
Finished: Yes
Enclosed: Yes
Contiguous: Yes
Permitted: Yes
Wet space: No
Addition: No
Conversion: No

**4232 Nepal Drive, Hermitage, Davidson County,
Tennessee, United States, 37076**

6 Floor 2 - Bedroom



Dimensions: 10'5" x 11'4"
Area: 119 sq. ft
Counted as living area: Yes

Heated: Yes
Finished: Yes
Enclosed: Yes
Contiguous: Yes
Permitted: Yes
Wet space: No
Addition: No
Conversion: No

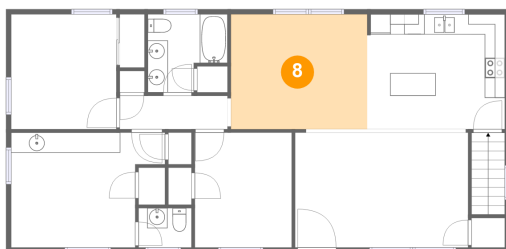
7 Floor 2 - Kitchen



Dimensions: 13'8" x 11'5"
Area: 155 sq. ft
Counted as living area: Yes

Heated: Yes
Finished: Yes
Enclosed: Yes
Contiguous: Yes
Permitted: Yes
Wet space: No
Addition: No
Conversion: No

8 Floor 2 - Dining Room



Dimensions: 13'6" x 11'5"
Area: 154 sq. ft
Counted as living area: Yes

Heated: Yes
Finished: Yes
Enclosed: Yes
Contiguous: Yes
Permitted: Yes
Wet space: No
Addition: No
Conversion: No

**4232 Nepal Drive, Hermitage, Davidson County,
Tennessee, United States, 37076**

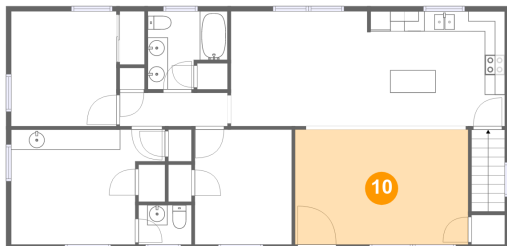
9 Floor 2 - Bedroom



Dimensions: 15'3" x 11'5"
Area: 149 sq. ft
Counted as living area: Yes

Heated: Yes
Finished: Yes
Enclosed: Yes
Contiguous: Yes
Permitted: Yes
Wet space: No
Addition: No
Conversion: No

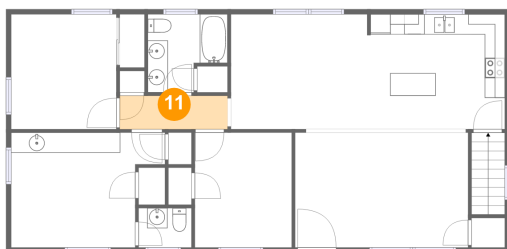
10 Floor 2 - Living Room



Dimensions: 17'2" x 11'5"
Area: 195 sq. ft
Counted as living area: Yes

Heated: Yes
Finished: Yes
Enclosed: Yes
Contiguous: Yes
Permitted: Yes
Wet space: No
Addition: No
Conversion: No

11 Floor 2 - Hall

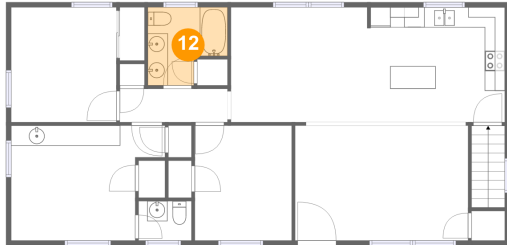


Dimensions: 10'8" x 3'4"
Area: 35 sq. ft
Counted as living area: Yes

Heated: Yes
Finished: Yes
Enclosed: Yes
Contiguous: Yes
Permitted: Yes
Wet space: No
Addition: No
Conversion: No

**4232 Nepal Drive, Hermitage, Davidson County,
Tennessee, United States, 37076**

12 Floor 2 - Bath



Dimensions: 7'11" x 7'9"
Area: 51 sq. ft
Counted as living area: Yes

Heated: Yes
Finished: Yes
Enclosed: Yes
Contiguous: Yes
Permitted: Yes
Wet space: Yes
Addition: No
Conversion: No

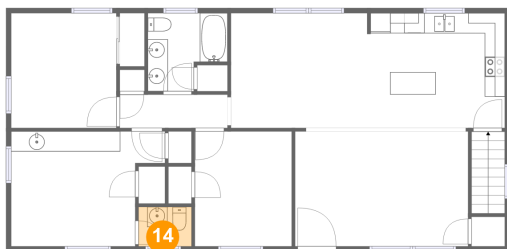
13 Floor 2 - Bedroom



Dimensions: 9'7" x 11'5"
Area: 109 sq. ft
Counted as living area: Yes

Heated: Yes
Finished: Yes
Enclosed: Yes
Contiguous: Yes
Permitted: Yes
Wet space: No
Addition: No
Conversion: No

14 Floor 2 - Bath



Dimensions: 5'3" x 3'11"
Area: 20 sq. ft
Counted as living area: Yes

Heated: Yes
Finished: Yes
Enclosed: Yes
Contiguous: Yes
Permitted: Yes
Wet space: Yes
Addition: No
Conversion: No