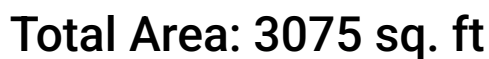


**2418 Summerwood Court, Fairway Estate, Dunedin, Pinellas  
County, Florida, United States, 34698**



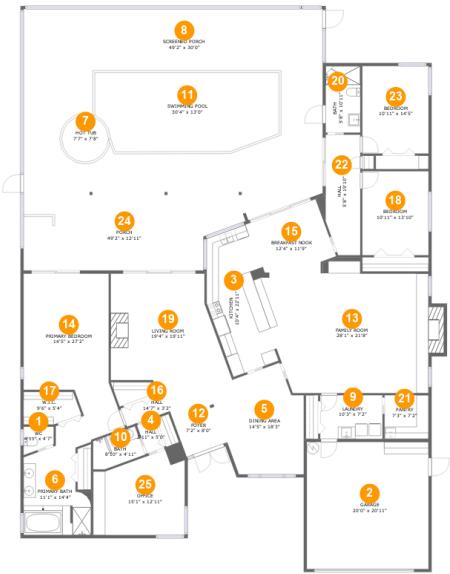
Excluded: Garage 418 sq. ft, Screened porch 1066 sq. ft, Porch 456 sq. ft, Fireplace 22 sq. ft, Walls: 218 sq. ft

## Property summary



Home report

2418 Summerwood Court, Fairway Estate, Dunedin, Pinellas County, Florida, United States, 34698



Room dimensions

Floor 1 Total:3075sqft   Excluded: 1962sqft

#		Max Dimensions	sqft	Included
1	WC	4'11" x 4'7"	19 sq. ft	Yes
2	Garage	20'0" x 20'11"	418 sq. ft	No
3	Kitchen	10'4" x 22'11"	195 sq. ft	Yes
4	Hall	2'11" x 5'0"	15 sq. ft	Yes
5	Dining Area	14'5" x 18'3"	220 sq. ft	Yes
6	Primary Bath	11'1" x 14'4"	162 sq. ft	Yes
7	Hot Tub	7'7" x 7'8"	45 sq. ft	No
8	Screened Porch	49'2" x 30'0"	1479 sq. ft	No
9	Laundry	10'3" x 7'2"	74 sq. ft	Yes
10	Bath	8'10" x 4'11"	39 sq. ft	Yes
11	Swimming Pool	30'4" x 13'0"	369 sq. ft	No

## Home report

# 2418 Summerwood Court, Fairway Estate, Dunedin, Pinellas County, Florida, United States, 34698

#		Max Dimensions	sqft	Included
12	Foyer	7'2" x 8'0"	60 sq. ft	Yes
13	Family Room	28'1" x 21'8"	523 sq. ft	Yes
14	Primary Bedroom	14'5" x 27'2"	311 sq. ft	Yes
15	Breakfast Nook	12'4" x 11'9"	140 sq. ft	Yes
16	Hall	14'7" x 3'2"	46 sq. ft	Yes
17	W.I.C.	9'6" x 5'4"	45 sq. ft	Yes
18	Bedroom	10'11" x 13'10"	150 sq. ft	Yes
19	Living Room	19'4" x 19'11"	303 sq. ft	Yes
20	Bath	5'8" x 10'11"	62 sq. ft	Yes
21	Pantry	7'3" x 7'2"	52 sq. ft	Yes
22	Hall	5'8" x 19'10"	110 sq. ft	Yes
23	Bedroom	10'11" x 14'5"	157 sq. ft	Yes
24	Porch	49'2" x 12'11"	456 sq. ft	No
25	Office	15'1" x 12'11"	181 sq. ft	Yes

2418 Summerwood Court, Fairway Estate, Dunedin, Pinellas  
County, Florida, United States, 34698

1 Floor 1 - WC



Max Dimensions: 4'11" x 4'7"  
Calculated Area: 19 sq. ft  
Included: Yes

Heated: Yes  
Finished: Yes  
Enclosed: Yes  
Contiguous: Yes  
Permitted: Yes  
Wet space: Yes  
Addition: No  
Conversion: No

2 Floor 1 - Garage



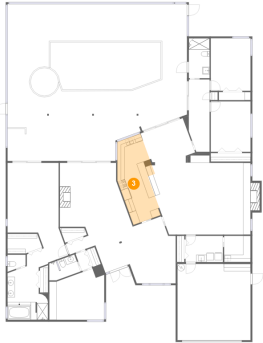
Max Dimensions: 20'0" x 20'11"  
Calculated Area: 418 sq. ft  
Included: No

Heated: No  
Finished: No  
Enclosed: Yes  
Contiguous: Yes  
Permitted: Yes  
Wet space: No  
Addition: No  
Conversion: No

**2418 Summerwood Court, Fairway Estate, Dunedin, Pinellas  
County, Florida, United States, 34698**

**3 Floor 1 - Kitchen**

---



Max Dimensions: 10'4" x 22'11"  
Calculated Area: 195 sq. ft  
Included: Yes

Heated: Yes  
Finished: Yes  
Enclosed: Yes  
Contiguous: Yes  
Permitted: Yes  
Wet space: No  
Addition: No  
Conversion: No

**4 Floor 1 - Hall**

---



Max Dimensions: 2'11" x 5'0"  
Calculated Area: 15 sq. ft  
Included: Yes

Heated: Yes  
Finished: Yes  
Enclosed: Yes  
Contiguous: Yes  
Permitted: Yes  
Wet space: No  
Addition: No  
Conversion: No

**5 Floor 1 - Dining Area**

---



Max Dimensions: 14'5" x 18'3"  
Calculated Area: 220 sq. ft  
Included: Yes

Heated: Yes  
Finished: Yes  
Enclosed: Yes  
Contiguous: Yes  
Permitted: Yes  
Wet space: No  
Addition: No  
Conversion: No

2418 Summerwood Court, Fairway Estate, Dunedin, Pinellas  
County, Florida, United States, 34698

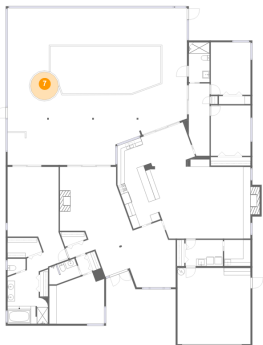
6 Floor 1 - Primary Bath



Max Dimensions: 11'1" x 14'4"  
Calculated Area: 162 sq. ft  
Included: Yes

Heated: Yes  
Finished: Yes  
Enclosed: Yes  
Contiguous: Yes  
Permitted: Yes  
Wet space: Yes  
Addition: No  
Conversion: No

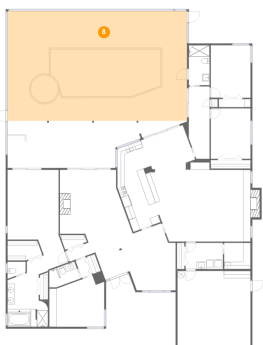
7 Floor 1 - Hot Tub



Max Dimensions: 7'7" x 7'8"  
Calculated Area: 45 sq. ft  
Included: No

Heated: No  
Finished: No  
Enclosed: No  
Contiguous: Yes  
Permitted: No  
Wet space: No  
Addition: No  
Conversion: No

8 Floor 1 - Screened Porch

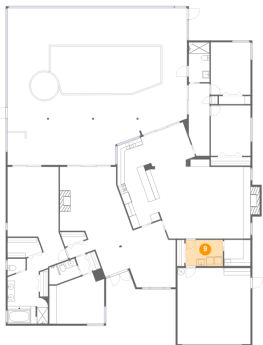


Max Dimensions: 49'2" x 30'0"  
Calculated Area: 1479 sq. ft  
Included: No

Heated: No  
Finished: Yes  
Enclosed: No  
Contiguous: Yes  
Permitted: Yes  
Wet space: No  
Addition: No  
Conversion: No

2418 Summerwood Court, Fairway Estate, Dunedin, Pinellas  
County, Florida, United States, 34698

9 Floor 1 - Laundry



Max Dimensions: 10'3" x 7'2"  
Calculated Area: 74 sq. ft  
Included: Yes

Heated: Yes  
Finished: Yes  
Enclosed: Yes  
Contiguous: Yes  
Permitted: Yes  
Wet space: No  
Addition: No  
Conversion: No

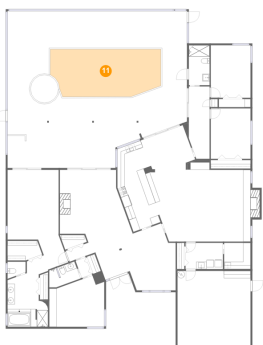
10 Floor 1 - Bath



Max Dimensions: 8'10" x 4'11"  
Calculated Area: 39 sq. ft  
Included: Yes

Heated: Yes  
Finished: Yes  
Enclosed: Yes  
Contiguous: Yes  
Permitted: Yes  
Wet space: Yes  
Addition: No  
Conversion: No

11 Floor 1 - Swimming Pool



Max Dimensions: 30'4" x 13'0"  
Calculated Area: 369 sq. ft  
Included: No

Heated: No  
Finished: No  
Enclosed: No  
Contiguous: Yes  
Permitted: No  
Wet space: No  
Addition: No  
Conversion: No

**2418 Summerwood Court, Fairway Estate, Dunedin, Pinellas  
County, Florida, United States, 34698**

**12 Floor 1 - Foyer**

---

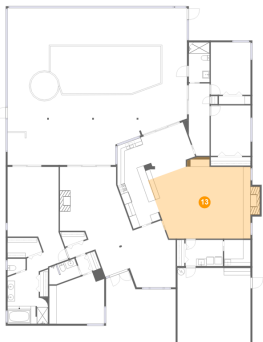


Max Dimensions: 7'2" x 8'0"  
Calculated Area: 60 sq. ft  
Included: Yes

Heated: Yes  
Finished: Yes  
Enclosed: Yes  
Contiguous: Yes  
Permitted: Yes  
Wet space: No  
Addition: No  
Conversion: No

**13 Floor 1 - Family Room**

---



Max Dimensions: 28'1" x  
21'8"  
Calculated Area: 523 sq. ft  
Included: Yes

Heated: Yes  
Finished: Yes  
Enclosed: Yes  
Contiguous:  
Yes  
Permitted: Yes  
Wet space: No  
Addition: No  
Conversion: No

**14 Floor 1 - Primary Bedroom**

---



Max Dimensions: 14'5" x  
27'2"  
Calculated Area: 311 sq. ft  
Included: Yes

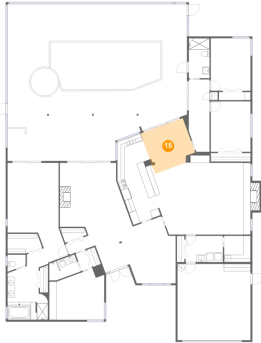
Heated: Yes  
Finished: Yes  
Enclosed: Yes  
Contiguous:  
Yes  
Permitted: Yes  
Wet space: No  
Addition: No  
Conversion: No



2418 Summerwood Court, Fairway Estate, Dunedin, Pinellas  
County, Florida, United States, 34698

**15** Floor 1 - Breakfast Nook

---



Max Dimensions: 12'4" x 11'9"  
Calculated Area: 140 sq. ft  
Included: Yes

Heated: Yes  
Finished: Yes  
Enclosed: Yes  
Contiguous: Yes  
Permitted: Yes  
Wet space: No  
Addition: No  
Conversion: No

**16** Floor 1 - Hall

---

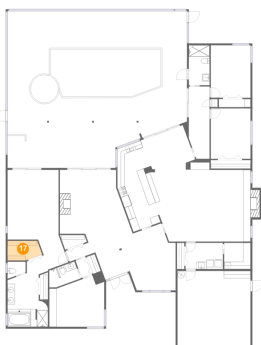


Max Dimensions: 14'7" x 3'2"  
Calculated Area: 46 sq. ft  
Included: Yes

Heated: Yes  
Finished: Yes  
Enclosed: Yes  
Contiguous: Yes  
Permitted: Yes  
Wet space: No  
Addition: No  
Conversion: No

**17** Floor 1 - W.I.C.

---



Max Dimensions: 9'6" x 5'4"  
Calculated Area: 45 sq. ft  
Included: Yes

Heated: Yes  
Finished: Yes  
Enclosed: Yes  
Contiguous: Yes  
Permitted: Yes  
Wet space: No  
Addition: No  
Conversion: No

2418 Summerwood Court, Fairway Estate, Dunedin, Pinellas  
County, Florida, United States, 34698

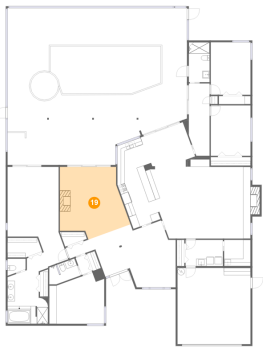
18 Floor 1 - Bedroom



Max Dimensions: 10'11" x 13'10"  
Calculated Area: 150 sq. ft  
Included: Yes

Heated: Yes  
Finished: Yes  
Enclosed: Yes  
Contiguous: Yes  
Permitted: Yes  
Wet space: No  
Addition: No  
Conversion: No

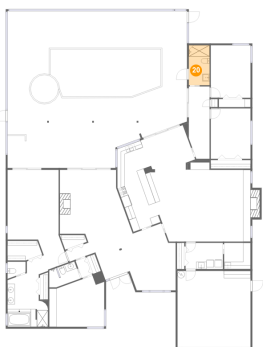
19 Floor 1 - Living Room



Max Dimensions: 19'4" x 19'11"  
Calculated Area: 303 sq. ft  
Included: Yes

Heated: Yes  
Finished: Yes  
Enclosed: Yes  
Contiguous: Yes  
Permitted: Yes  
Wet space: No  
Addition: No  
Conversion: No

20 Floor 1 - Bath



Max Dimensions: 5'8" x 10'11"  
Calculated Area: 62 sq. ft  
Included: Yes

Heated: Yes  
Finished: Yes  
Enclosed: Yes  
Contiguous: Yes  
Permitted: Yes  
Wet space: Yes  
Addition: No  
Conversion: No

**2418 Summerwood Court, Fairway Estate, Dunedin, Pinellas  
County, Florida, United States, 34698**

**21 Floor 1 - Pantry**

---

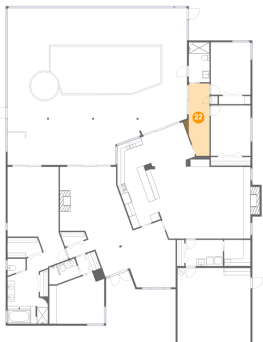


Max Dimensions: 7'3" x 7'2"  
Calculated Area: 52 sq. ft  
Included: Yes

Heated: Yes  
Finished: Yes  
Enclosed: Yes  
Contiguous: Yes  
Permitted: Yes  
Wet space: No  
Addition: No  
Conversion: No

**22 Floor 1 - Hall**

---



Max Dimensions: 5'8" x  
19'10"  
Calculated Area: 110 sq. ft  
Included: Yes

Heated: Yes  
Finished: Yes  
Enclosed: Yes  
Contiguous:  
Yes  
Permitted: Yes  
Wet space: No  
Addition: No  
Conversion: No

**23 Floor 1 - Bedroom**

---

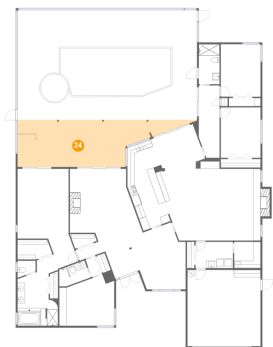


Max Dimensions: 10'11" x  
14'5"  
Calculated Area: 157 sq. ft  
Included: Yes

Heated: Yes  
Finished: Yes  
Enclosed: Yes  
Contiguous:  
Yes  
Permitted: Yes  
Wet space: No  
Addition: No  
Conversion: No

2418 Summerwood Court, Fairway Estate, Dunedin, Pinellas  
County, Florida, United States, 34698

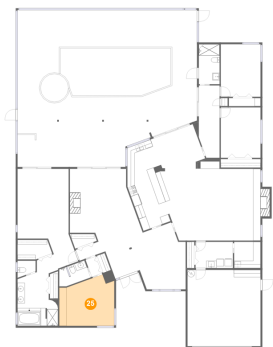
24 Floor 1 - Porch



Max Dimensions: 49'2" x 12'11"  
Calculated Area: 456 sq. ft  
Included: No

Heated: No  
Finished: Yes  
Enclosed: No  
Contiguous: Yes  
Permitted: Yes  
Wet space: No  
Addition: No  
Conversion: No

25 Floor 1 - Office



Max Dimensions: 15'1" x 12'11"  
Calculated Area: 181 sq. ft  
Included: Yes

Heated: Yes  
Finished: Yes  
Enclosed: Yes  
Contiguous: Yes  
Permitted: Yes  
Wet space: No  
Addition: No  
Conversion: No