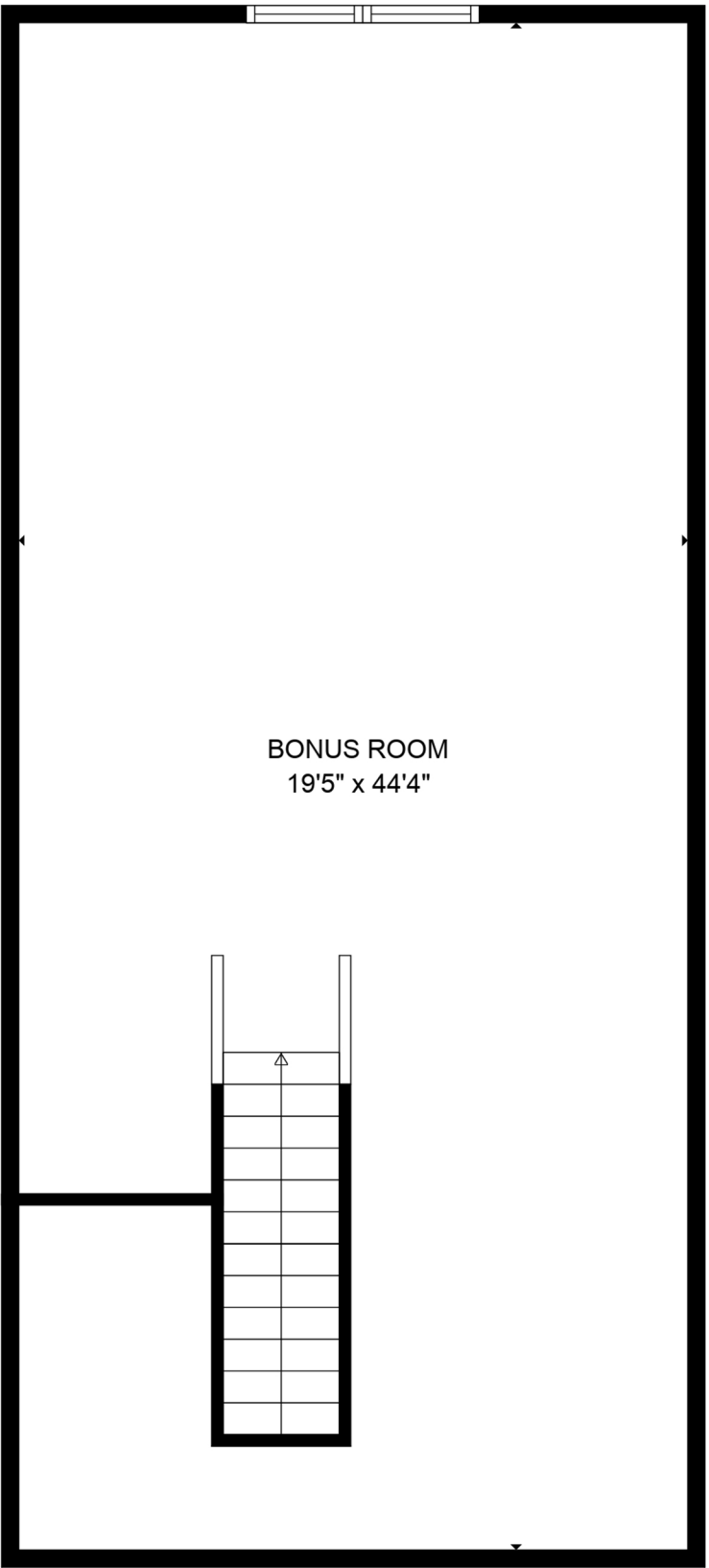
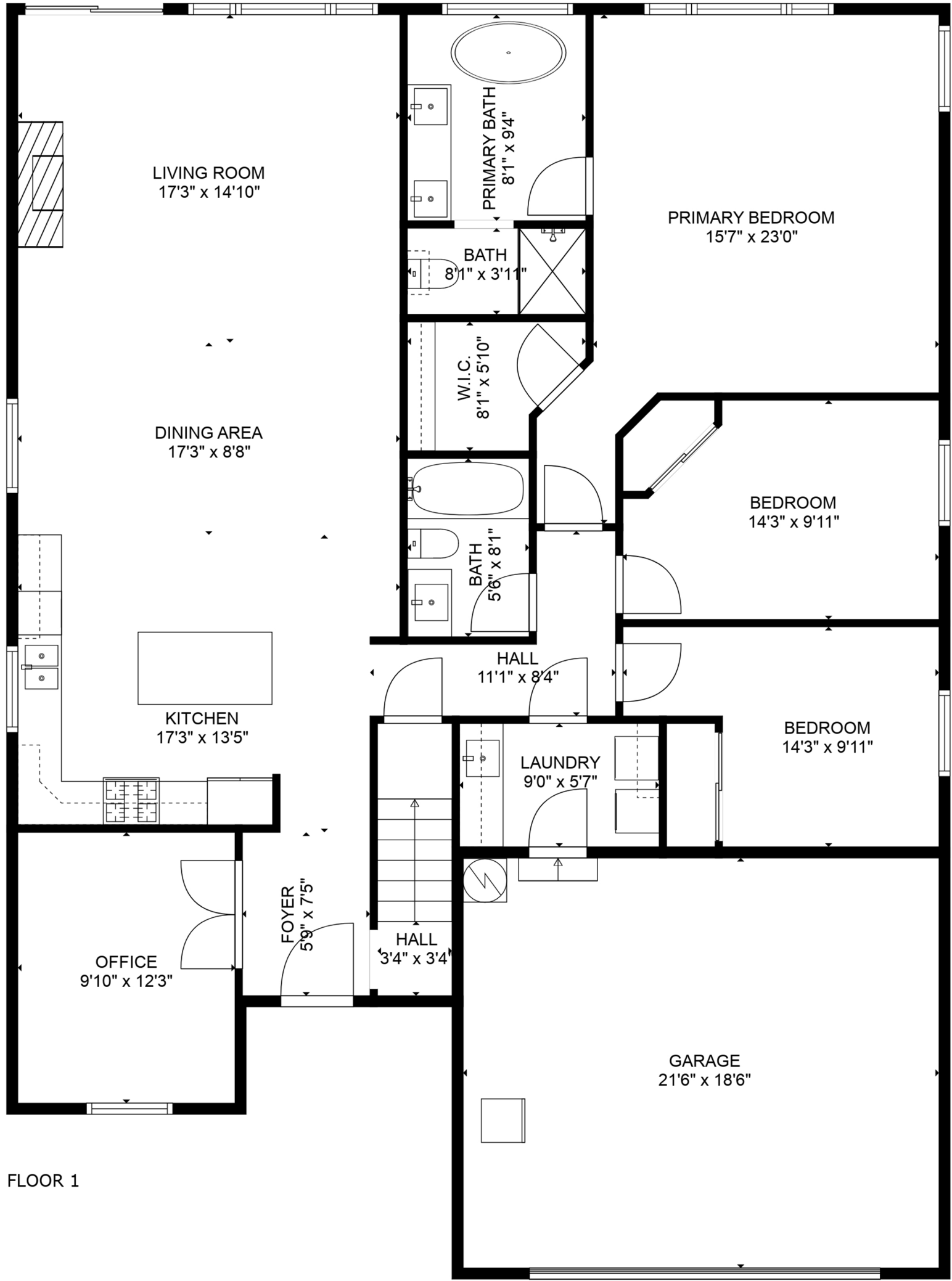


11469 Ninebark Way  
Missoula, MT 59802



3 2 2532  
BEDROOMS BATHROOMS TOTAL SQ.FT.

Measurements are approximate and may not be to scale.  
The floor plan illustration is not suitable for construction/architectural purposes.  
This communication is not intended to cause or induce breach of an existing agency agreement.

