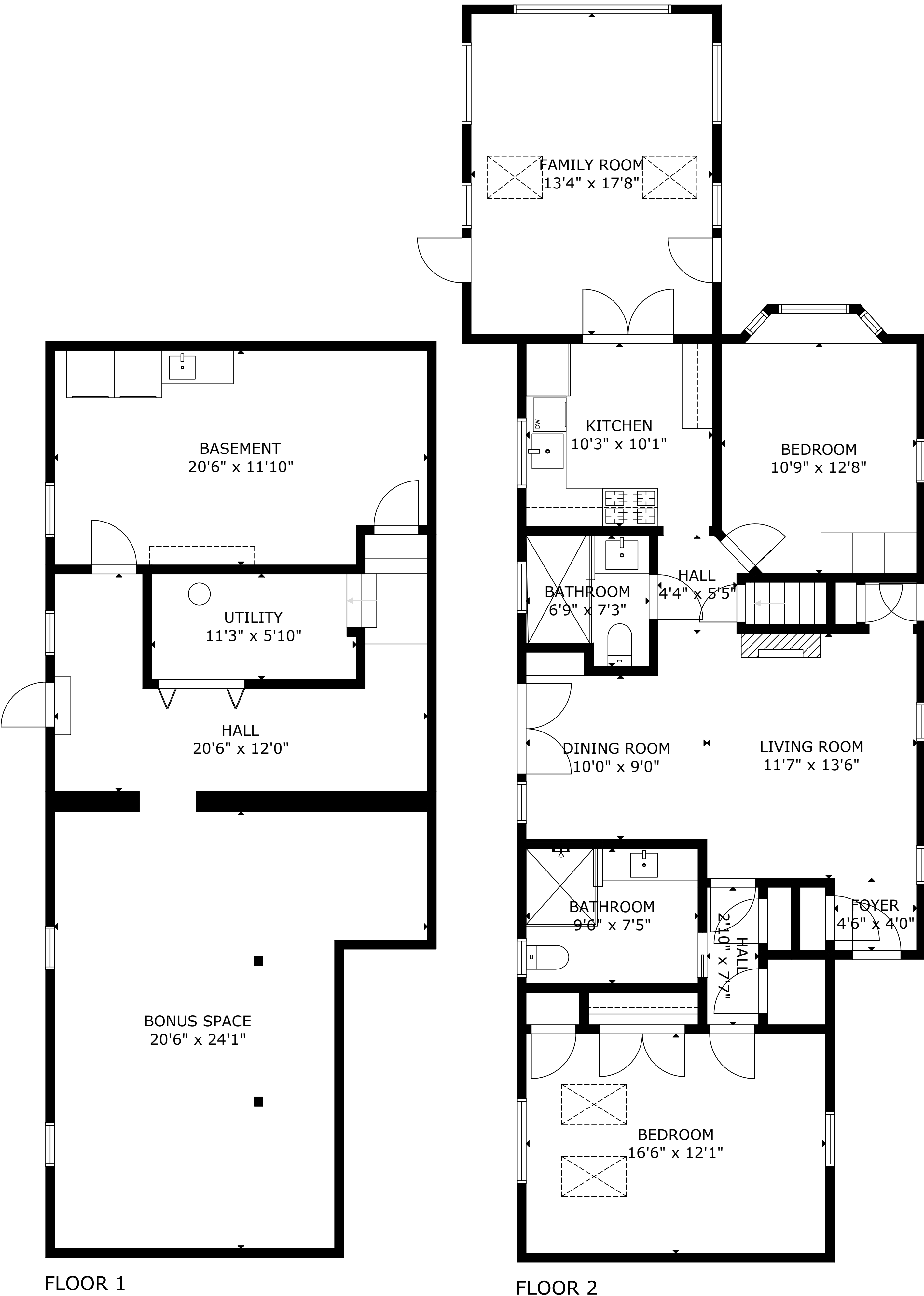


126 Bay Street Osterville



FLOOR 1

FLOOR 2

GROSS INTERNAL AREA
TOTAL: 2,172 sq ft
FLOOR 1: 928 sq ft, FLOOR 2: 1,244 sq ft
SIZE AND DIMENSIONS ARE APPROXIMATE, ACTUAL MAY VARY

