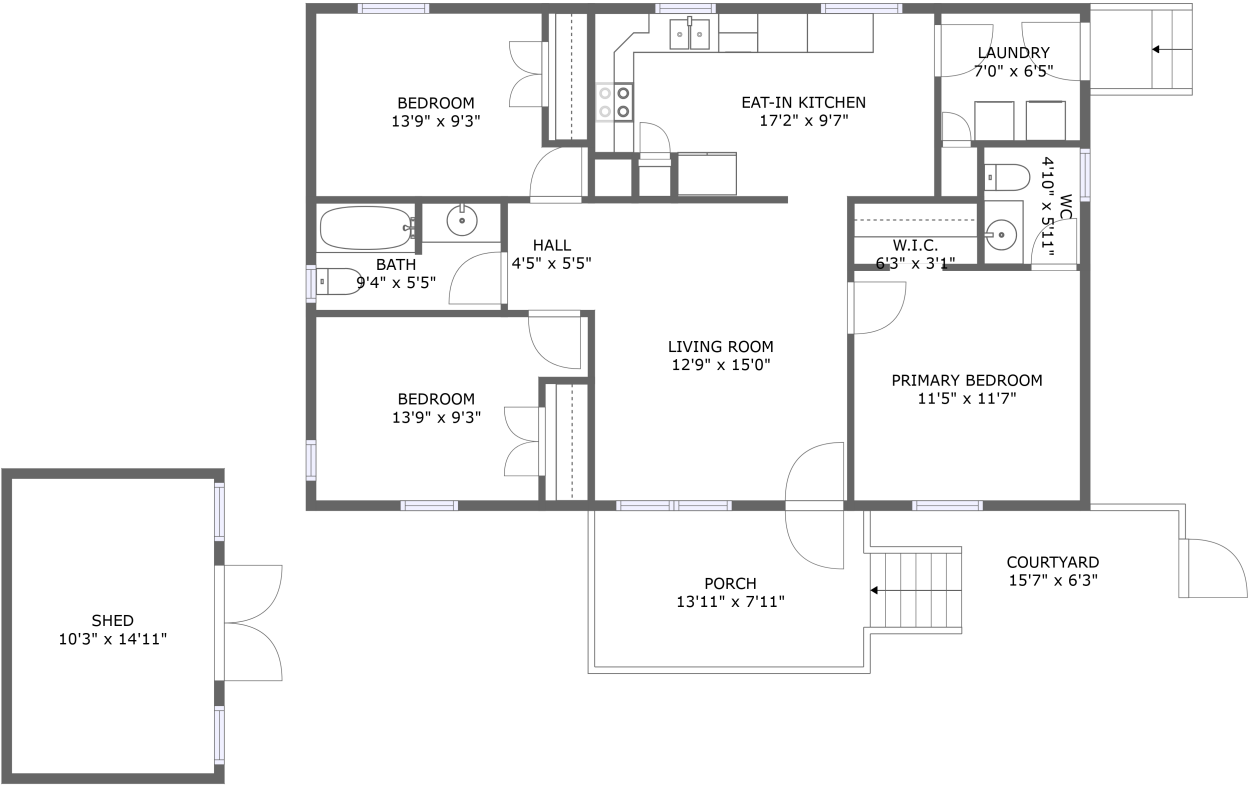


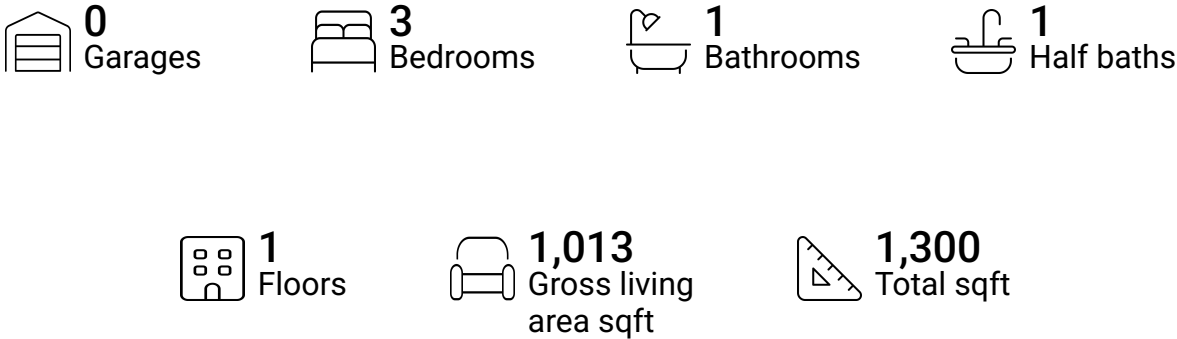
Home report

164 Walker Lane,Middlesboro,Kentucky,United States



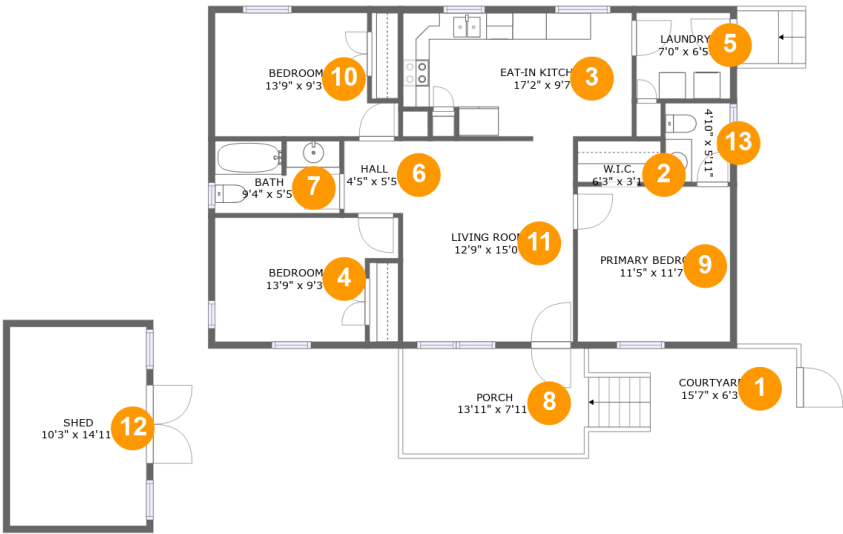
FLOOR 1

Property summary



Home report

164 Walker Lane,Middlesboro,Kentucky,United States



Room dimensions

Floor 1

Total sqft: 1300

Living area: 1013

#		Dimensions	sqft	Counted as living area
1	Courtyard	15'7" x 6'3"	97 sq. ft	No
2	W.I.C.	6'3" x 3'1"	19 sq. ft	Yes
3	Eat-in Kitchen	17'2" x 9'7"	150 sq. ft	Yes
4	Bedroom	13'9" x 9'3"	112 sq. ft	Yes
5	Laundry	7'0" x 6'5"	45 sq. ft	Yes
6	Hall	4'5" x 5'5"	24 sq. ft	Yes
7	Bath	9'4" x 5'5"	50 sq. ft	Yes
8	Porch	13'11" x 7'11"	108 sq. ft	No
9	Primary Bedroom	11'5" x 11'7"	133 sq. ft	Yes
10	Bedroom	13'9" x 9'3"	111 sq. ft	Yes
11	Living Room	12'9" x 15'0"	192 sq. ft	Yes

Home report

164 Walker Lane,Middlesboro,Kentucky,United States

#		Dimensions	sqft	Counted as living area
12	Shed	10'3" x 14'11"	152 sq. ft	No
13	WC	4'10" x 5'11"	29 sq. ft	Yes

1 Floor 1 - Courtyard



Dimensions: 15'7" x 6'3"  
Area: 97 sq. ft  
Counted as living area: No

Heated: No  
Finished: No  
Enclosed: No  
Contiguous: Yes  
Permitted: No  
Wet space: No  
Addition: No  
Conversion: No

2 Floor 1 - W.I.C.



Dimensions: 6'3" x 3'1"  
Area: 19 sq. ft  
Counted as living area: Yes

Heated: Yes  
Finished: Yes  
Enclosed: Yes  
Contiguous: Yes  
Permitted: Yes  
Wet space: No  
Addition: No  
Conversion: No

### 3 Floor 1 - Eat-in Kitchen



Dimensions: 17'2" x 9'7"  
Area: 150 sq. ft  
Counted as living area: Yes

Heated: Yes  
Finished: Yes  
Enclosed: Yes  
Contiguous: Yes  
Permitted: Yes  
Wet space: No  
Addition: No  
Conversion: No

### 4 Floor 1 - Bedroom



Dimensions: 13'9" x 9'3"  
Area: 112 sq. ft  
Counted as living area: Yes

Heated: Yes  
Finished: Yes  
Enclosed: Yes  
Contiguous: Yes  
Permitted: Yes  
Wet space: No  
Addition: No  
Conversion: No

### 5 Floor 1 - Laundry



Dimensions: 7'0" x 6'5"  
Area: 45 sq. ft  
Counted as living area: Yes

Heated: Yes  
Finished: Yes  
Enclosed: Yes  
Contiguous: Yes  
Permitted: Yes  
Wet space: No  
Addition: No  
Conversion: No

6 Floor 1 - Hall



Dimensions: 4'5" x 5'5"  
Area: 24 sq. ft  
Counted as living area: Yes

Heated: Yes  
Finished: Yes  
Enclosed: Yes  
Contiguous: Yes  
Permitted: Yes  
Wet space: No  
Addition: No  
Conversion: No

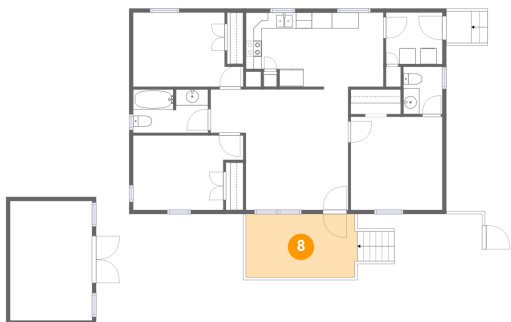
7 Floor 1 - Bath



Dimensions: 9'4" x 5'5"  
Area: 50 sq. ft  
Counted as living area: Yes

Heated: Yes  
Finished: Yes  
Enclosed: Yes  
Contiguous: Yes  
Permitted: Yes  
Wet space: Yes  
Addition: No  
Conversion: No

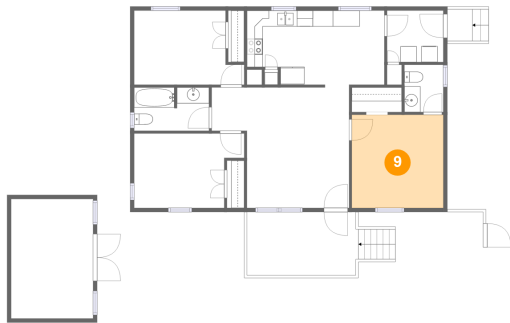
8 Floor 1 - Porch



Dimensions: 13'11" x 7'11"  
Area: 108 sq. ft  
Counted as living area: No

Heated: No  
Finished: Yes  
Enclosed: No  
Contiguous: Yes  
Permitted: Yes  
Wet space: No  
Addition: No  
Conversion: No

## 9 Floor 1 - Primary Bedroom



Dimensions: 11'5" x 11'7"  
Area: 133 sq. ft  
Counted as living area: Yes

Heated: Yes  
Finished: Yes  
Enclosed: Yes  
Contiguous: Yes  
Permitted: Yes  
Wet space: No  
Addition: No  
Conversion: No

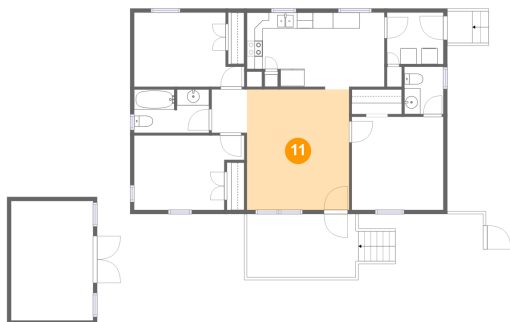
## 10 Floor 1 - Bedroom



Dimensions: 13'9" x 9'3"  
Area: 111 sq. ft  
Counted as living area: Yes

Heated: Yes  
Finished: Yes  
Enclosed: Yes  
Contiguous: Yes  
Permitted: Yes  
Wet space: No  
Addition: No  
Conversion: No

## 11 Floor 1 - Living Room



Dimensions: 12'9" x 15'0"  
Area: 192 sq. ft  
Counted as living area: Yes

Heated: Yes  
Finished: Yes  
Enclosed: Yes  
Contiguous: Yes  
Permitted: Yes  
Wet space: No  
Addition: No  
Conversion: No

12 Floor 1 - Shed



Dimensions: 10'3" x 14'11"  
Area: 152 sq. ft  
Counted as living area: No

Heated: No  
Finished: No  
Enclosed: No  
Contiguous: No  
Permitted: Yes  
Wet space: No  
Addition: No  
Conversion: No

13 Floor 1 - WC



Dimensions: 4'10" x 5'11"  
Area: 29 sq. ft  
Counted as living area: Yes

Heated: Yes  
Finished: Yes  
Enclosed: Yes  
Contiguous: Yes  
Permitted: Yes  
Wet space: Yes  
Addition: No  
Conversion: No