


Home report


5273 Fieldcrest Dr,Pittsburgh,PA,US




Property summary




0
Garages



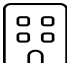
3
Bedrooms




1
Bathrooms




1
Half baths



3
Floors



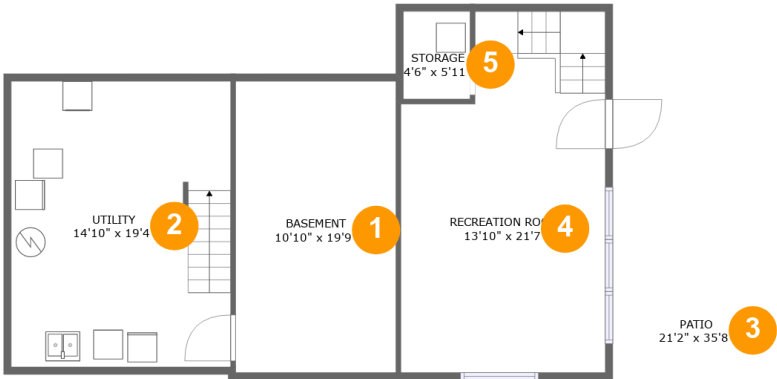
1,544
Gross living
area sqft



3,471
Total sqft

Home report

5273 Fieldcrest Dr,Pittsburgh,PA,US



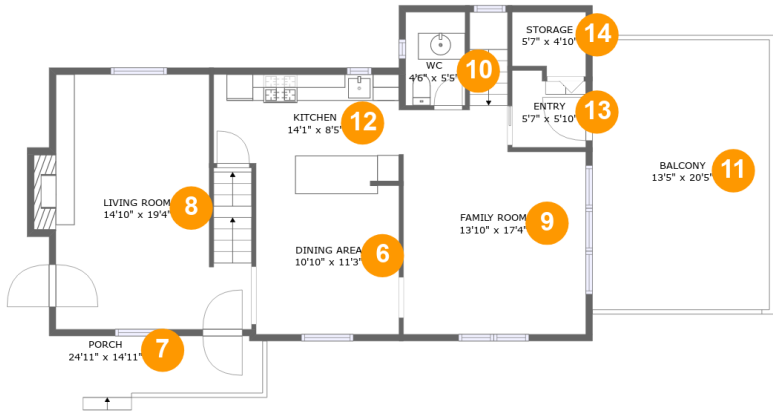
Room dimensions

Floor 1 Total sqft: 1347 Living area: 0

#		Dimensions	sqft	Counted as living area
1	Basement	10'10" x 19'9"	214 sq. ft	No
2	Utility	14'10" x 19'4"	287 sq. ft	No
3	Patio	21'2" x 35'8"	428 sq. ft	No
4	Recreation Room	13'10" x 21'7"	307 sq. ft	No
5	Storage	4'6" x 5'11"	27 sq. ft	No

Home report

5273 Fieldcrest Dr,Pittsburgh,PA,US



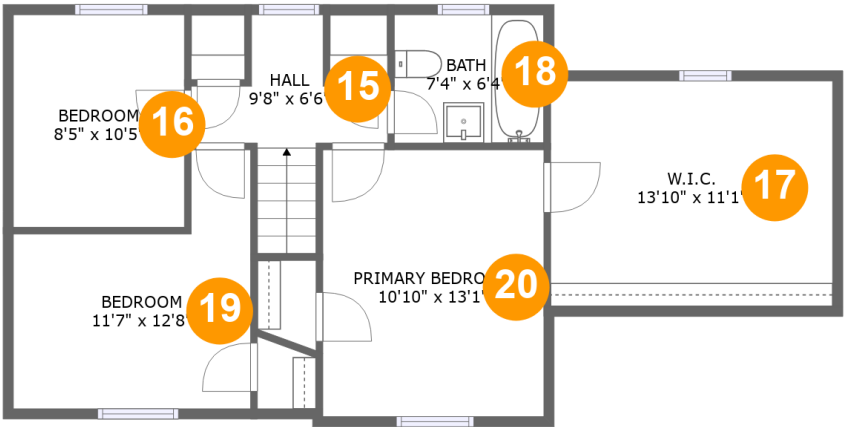
Room dimensions

Floor 2 Total sqft: 1399 Living area: 887

#		Dimensions	sqft	Counted as living area
6	Dining Area	10'10" x 11'3"	122 sq. ft	Yes
7	Porch	24'11" x 14'11"	195 sq. ft	No
8	Living Room	14'10" x 19'4"	272 sq. ft	Yes
9	Family Room	13'10" x 17'4"	239 sq. ft	Yes
10	WC	4'6" x 5'5"	32 sq. ft	Yes
11	Balcony	13'5" x 20'5"	275 sq. ft	No
12	Kitchen	14'1" x 8'5"	113 sq. ft	Yes
13	Entry	5'7" x 5'10"	30 sq. ft	Yes
14	Storage	5'7" x 4'10"	25 sq. ft	No

Home report

5273 Fieldcrest Dr,Pittsburgh,PA,US

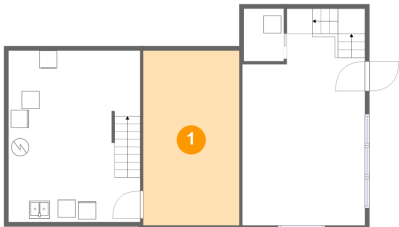


Room dimensions

Floor 3 Total sqft: 725 Living area: 657

#		Dimensions	sqft	Counted as living area
15	Hall	9'8" x 6'6"	55 sq. ft	Yes
16	Bedroom	8'5" x 10'5"	88 sq. ft	Yes
17	W.I.C.	13'10" x 11'1"	101 sq. ft	Yes
18	Bath	7'4" x 6'4"	46 sq. ft	Yes
19	Bedroom	11'7" x 12'8"	112 sq. ft	Yes
20	Primary Bedroom	10'10" x 13'1"	142 sq. ft	Yes

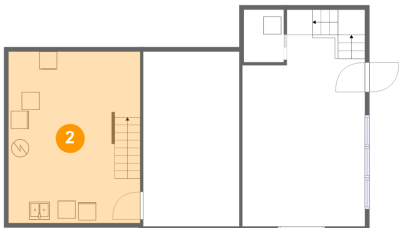
1 Floor 1 - Basement



Dimensions: 10'10" x 19'9"
Area: 214 sq. ft
Counted as living area: No

Heated: Yes
Finished: No
Enclosed: Yes
Contiguous: Yes
Permitted: Yes
Wet space: No
Addition: No
Conversion: No

2 Floor 1 - Utility



Dimensions: 14'10" x 19'4"
Area: 287 sq. ft
Counted as living area: No

Heated: Yes
Finished: No
Enclosed: Yes
Contiguous: Yes
Permitted: Yes
Wet space: No
Addition: No
Conversion: No

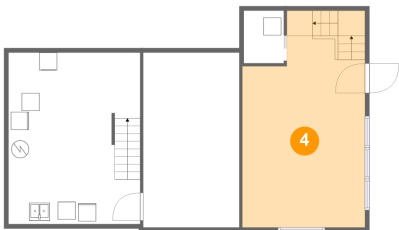
3 Floor 1 - Patio



Dimensions: 21'2" x 35'8"
Area: 428 sq. ft
Counted as living area: No

Heated: No
Finished: Yes
Enclosed: No
Contiguous: Yes
Permitted: Yes
Wet space: No
Addition: No
Conversion: No

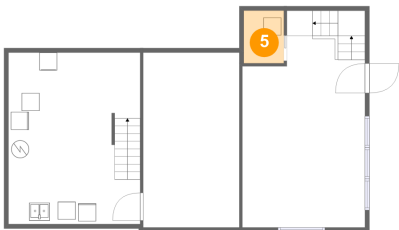
4 Floor 1 - Recreation Room



Dimensions: 13'10" x 21'7"
Area: 307 sq. ft
Counted as living area: No

Heated: Yes
Finished: Yes
Enclosed: Yes
Contiguous: No
Permitted: Yes
Wet space: No
Addition: No
Conversion: No

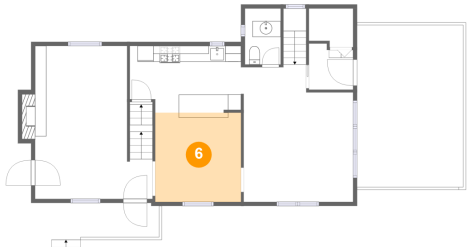
5 Floor 1 - Storage



Dimensions: 4'6" x 5'11"
Area: 27 sq. ft
Counted as living area: No

Heated: No
Finished: No
Enclosed: No
Contiguous: Yes
Permitted: Yes
Wet space: No
Addition: No
Conversion: No

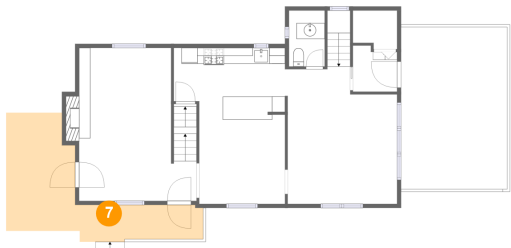
6 Floor 2 - Dining Area



Dimensions: 10'10" x 11'3"
Area: 122 sq. ft
Counted as living area: Yes

Heated: Yes
Finished: Yes
Enclosed: Yes
Contiguous: Yes
Permitted: Yes
Wet space: No
Addition: No
Conversion: No

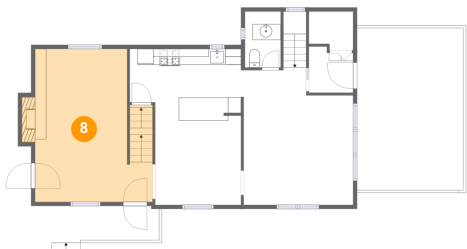
7 Floor 2 - Porch



Dimensions: 24'11" x 14'11"
Area: 195 sq. ft
Counted as living area: No

Heated: No
Finished: Yes
Enclosed: No
Contiguous: Yes
Permitted: Yes
Wet space: No
Addition: No
Conversion: No

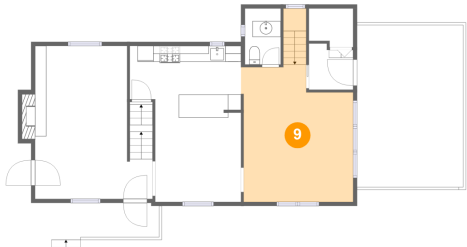
8 Floor 2 - Living Room



Dimensions: 14'10" x 19'4"
Area: 272 sq. ft
Counted as living area: Yes

Heated: Yes
Finished: Yes
Enclosed: Yes
Contiguous: Yes
Permitted: Yes
Wet space: No
Addition: No
Conversion: No

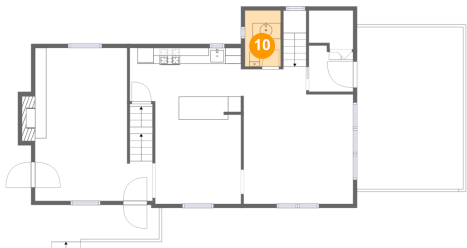
9 Floor 2 - Family Room



Dimensions: 13'10" x 17'4"
Area: 239 sq. ft
Counted as living area: Yes

Heated: Yes
Finished: Yes
Enclosed: Yes
Contiguous: Yes
Permitted: Yes
Wet space: No
Addition: No
Conversion: No

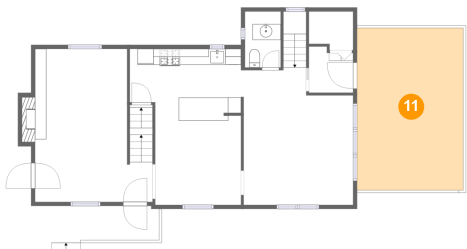
10 Floor 2 - WC



Dimensions: 4'6" x 5'5"
Area: 32 sq. ft
Counted as living area: Yes

Heated: Yes
Finished: Yes
Enclosed: Yes
Contiguous: Yes
Permitted: Yes
Wet space: Yes
Addition: No
Conversion: No

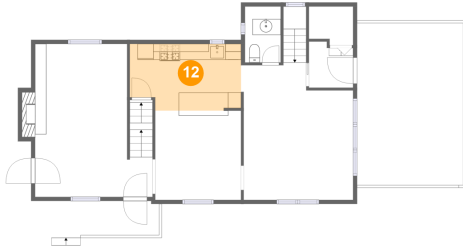
11 Floor 2 - Balcony



Dimensions: 13'5" x 20'5"
Area: 275 sq. ft
Counted as living area: No

Heated: No
Finished: Yes
Enclosed: No
Contiguous: Yes
Permitted: Yes
Wet space: No
Addition: No
Conversion: No

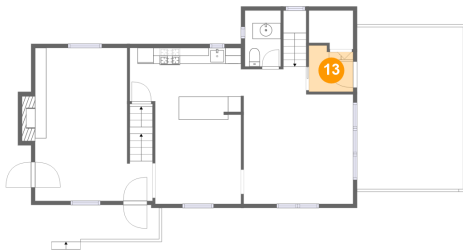
12 Floor 2 - Kitchen



Dimensions: 14'1" x 8'5"
Area: 113 sq. ft
Counted as living area: Yes

Heated: Yes
Finished: Yes
Enclosed: Yes
Contiguous: Yes
Permitted: Yes
Wet space: No
Addition: No
Conversion: No

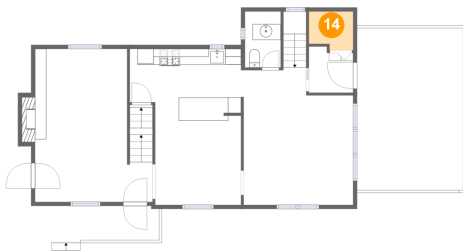
13 Floor 2 - Entry



Dimensions: 5'7" x 5'10"
Area: 30 sq. ft
Counted as living area: Yes

Heated: Yes
Finished: Yes
Enclosed: Yes
Contiguous: Yes
Permitted: Yes
Wet space: No
Addition: No
Conversion: No

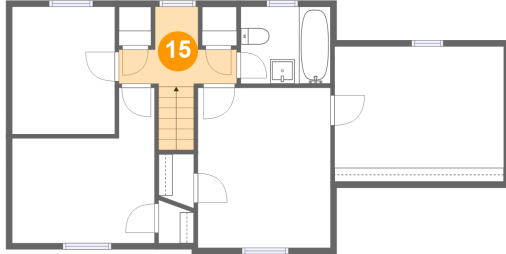
14 Floor 2 - Storage



Dimensions: 5'7" x 4'10"
Area: 25 sq. ft
Counted as living area: No

Heated: No
Finished: No
Enclosed: No
Contiguous: Yes
Permitted: Yes
Wet space: No
Addition: No
Conversion: No

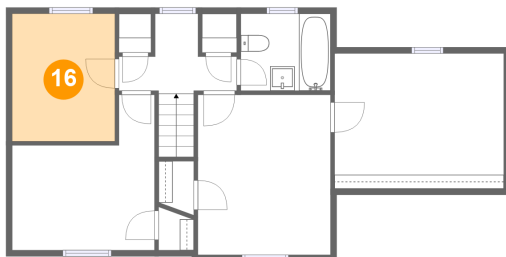
15 Floor 3 - Hall



Dimensions: 9'8" x 6'6"
Area: 55 sq. ft
Counted as living area: Yes

Heated: Yes
Finished: Yes
Enclosed: Yes
Contiguous: Yes
Permitted: Yes
Wet space: No
Addition: No
Conversion: No

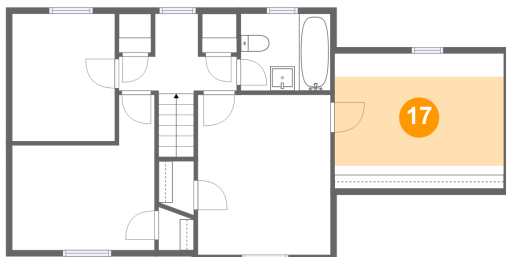
16 Floor 3 - Bedroom



Dimensions: 8'5" x 10'5"
Area: 88 sq. ft
Counted as living area: Yes

Heated: Yes
Finished: Yes
Enclosed: Yes
Contiguous: Yes
Permitted: Yes
Wet space: No
Addition: No
Conversion: No

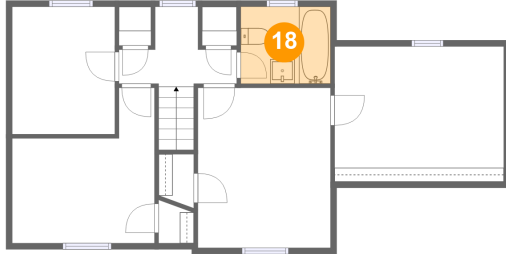
17 Floor 3 - W.I.C.



Dimensions: 13'10" x 11'1"
Area: 101 sq. ft
Counted as living area: Yes

Heated: Yes
Finished: Yes
Enclosed: Yes
Contiguous: Yes
Permitted: Yes
Wet space: No
Addition: No
Conversion: No

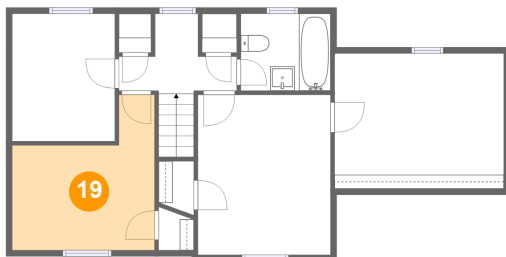
18 Floor 3 - Bath



Dimensions: 7'4" x 6'4"
Area: 46 sq. ft
Counted as living area: Yes

Heated: Yes
Finished: Yes
Enclosed: Yes
Contiguous: Yes
Permitted: Yes
Wet space: Yes
Addition: No
Conversion: No

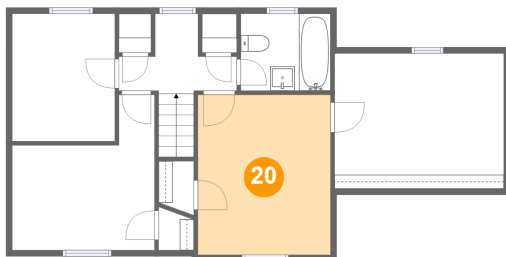
19 Floor 3 - Bedroom



Dimensions: 11'7" x 12'8"
Area: 112 sq. ft
Counted as living area: Yes

Heated: Yes
Finished: Yes
Enclosed: Yes
Contiguous: Yes
Permitted: Yes
Wet space: No
Addition: No
Conversion: No

20 Floor 3 - Primary Bedroom



Dimensions: 10'10" x 13'1"
Area: 142 sq. ft
Counted as living area: Yes

Heated: Yes
Finished: Yes
Enclosed: Yes
Contiguous: Yes
Permitted: Yes
Wet space: No
Addition: No
Conversion: No