

Home report

2900 Marston Road, Dennings, New Windsor, Carroll County,  
Maryland, United States, 21776




Total GLA: 5191 sq. ft

Floor 1: 1784 sq. ft, Floor 2: 3407 sq. ft

Excluded:

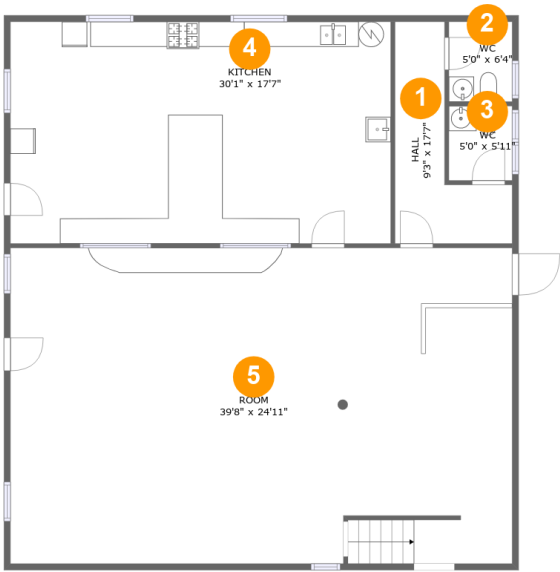
Property summary

 2 Floors

 3 Half baths

Home report

2900 Marston Road, Dennings, New Windsor, Carroll County,  
Maryland, United States, 21776



Room dimensions

Floor 1 Total:1784sqft   Excluded: 0sqft

#		Max Dimensions	sqft	Included
1	Hall	9'3" x 17'7"	94 sq. ft	Yes
2	WC	5'0" x 6'4"	32 sq. ft	Yes
3	WC	5'0" x 5'11"	30 sq. ft	Yes
4	Kitchen	30'1" x 17'7"	529 sq. ft	Yes
5	Room	39'8" x 24'11"	990 sq. ft	Yes

2900 Marston Road, Dennings, New Windsor, Carroll County,  
Maryland, United States, 21776



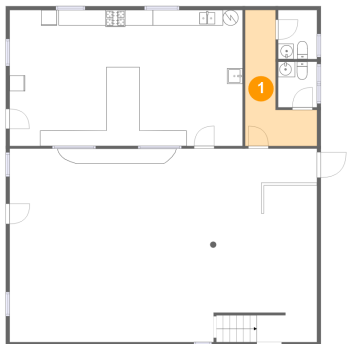
Room dimensions

Floor 2 Total:3407sqft   Excluded: 0sqft

#		Max Dimensions	sqft	Included
6	Foyer	9'0" x 7'5"	67 sq. ft	Yes
7	Room	13'0" x 25'10"	327 sq. ft	Yes
8	Room	13'0" x 23'7"	315 sq. ft	Yes
9	Room	13'0" x 16'8"	209 sq. ft	Yes
10	Room	33'10" x 43'10"	1479 sq. ft	Yes
11	WC	4'11" x 6'8"	33 sq. ft	Yes
12	Room	13'0" x 16'8"	209 sq. ft	Yes
13	Room	13'0" x 25'10"	328 sq. ft	Yes
14	Room	13'1" x 16'8"	173 sq. ft	Yes

2900 Marston Road, Dennings, New Windsor, Carroll County,  
Maryland, United States, 21776

1 Floor 1 - Hall



Max Dimensions: 9'3" x 17'7"  
Calculated Area: 94 sq. ft  
Included: Yes

Heated: Yes  
Finished: Yes  
Enclosed: Yes  
Contiguous: Yes  
Permitted: Yes  
Wet space: No  
Addition: No  
Conversion: No

2 Floor 1 - WC



Max Dimensions: 5'0" x 6'4"  
Calculated Area: 32 sq. ft  
Included: Yes

Heated: Yes  
Finished: Yes  
Enclosed: Yes  
Contiguous: Yes  
Permitted: Yes  
Wet space: Yes  
Addition: No  
Conversion: No

2900 Marston Road, Dennings, New Windsor, Carroll County,  
Maryland, United States, 21776

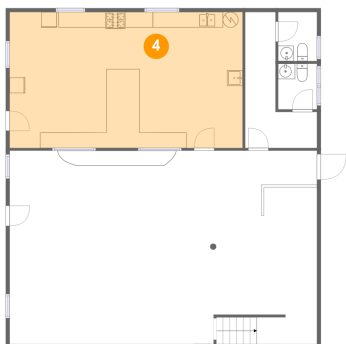
3 Floor 1 - WC



Max Dimensions: 5'0" x 5'11"  
Calculated Area: 30 sq. ft  
Included: Yes

Heated: Yes  
Finished: Yes  
Enclosed: Yes  
Contiguous: Yes  
Permitted: Yes  
Wet space: Yes  
Addition: No  
Conversion: No

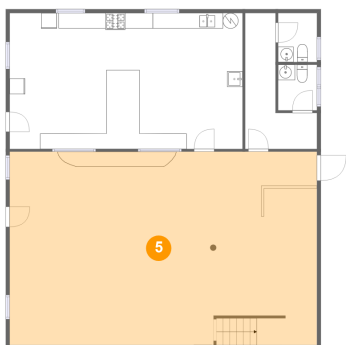
4 Floor 1 - Kitchen



Max Dimensions: 30'1" x 17'7"  
Calculated Area: 529 sq. ft  
Included: Yes

Heated: Yes  
Finished: Yes  
Enclosed: Yes  
Contiguous: Yes  
Permitted: Yes  
Wet space: No  
Addition: No  
Conversion: No

5 Floor 1 - Room

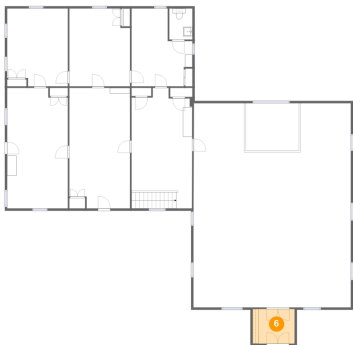


Max Dimensions: 39'8" x 24'11"  
Calculated Area: 990 sq. ft  
Included: Yes

Heated: Yes  
Finished: Yes  
Enclosed: Yes  
Contiguous: Yes  
Permitted: Yes  
Wet space: No  
Addition: No  
Conversion: No

2900 Marston Road, Dennings, New Windsor, Carroll County,  
Maryland, United States, 21776

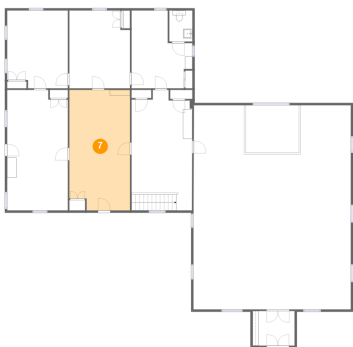
6 Floor 2 - Foyer



Max Dimensions: 9'0" x 7'5"  
Calculated Area: 67 sq. ft  
Included: Yes

Heated: Yes  
Finished: Yes  
Enclosed: Yes  
Contiguous: Yes  
Permitted: Yes  
Wet space: No  
Addition: No  
Conversion: No

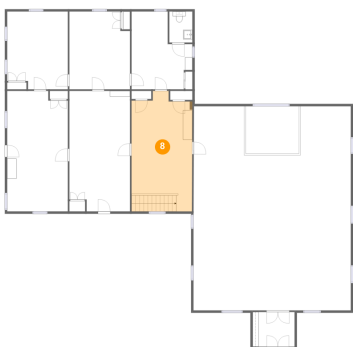
7 Floor 2 - Room



Max Dimensions: 13'0" x 25'10"  
Calculated Area: 327 sq. ft  
Included: Yes

Heated: Yes  
Finished: Yes  
Enclosed: Yes  
Contiguous: Yes  
Permitted: Yes  
Wet space: No  
Addition: No  
Conversion: No

8 Floor 2 - Room

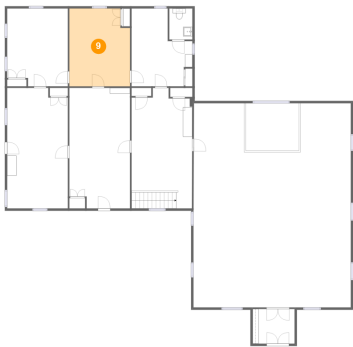


Max Dimensions: 13'0" x 23'7"  
Calculated Area: 315 sq. ft  
Included: Yes

Heated: Yes  
Finished: Yes  
Enclosed: Yes  
Contiguous: Yes  
Permitted: Yes  
Wet space: No  
Addition: No  
Conversion: No

2900 Marston Road, Dennings, New Windsor, Carroll County,  
Maryland, United States, 21776

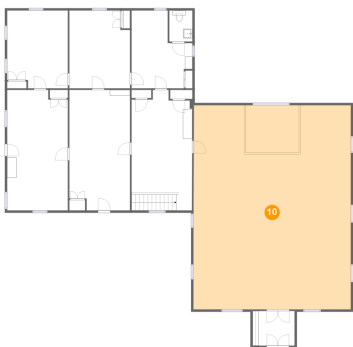
9 Floor 2 - Room



Max Dimensions: 13'0" x 16'8"  
Calculated Area: 209 sq. ft  
Included: Yes

Heated: Yes  
Finished: Yes  
Enclosed: Yes  
Contiguous: Yes  
Permitted: Yes  
Wet space: No  
Addition: No  
Conversion: No

10 Floor 2 - Room



Max Dimensions: 33'10" x 43'10"  
Calculated Area: 1479 sq. ft  
Included: Yes

Heated: Yes  
Finished: Yes  
Enclosed: Yes  
Contiguous: Yes  
Permitted: Yes  
Wet space: No  
Addition: No  
Conversion: No

11 Floor 2 - WC



Max Dimensions: 4'11" x 6'8"  
Calculated Area: 33 sq. ft  
Included: Yes

Heated: Yes  
Finished: Yes  
Enclosed: Yes  
Contiguous: Yes  
Permitted: Yes  
Wet space: Yes  
Addition: No  
Conversion: No

2900 Marston Road, Dennings, New Windsor, Carroll County,  
Maryland, United States, 21776

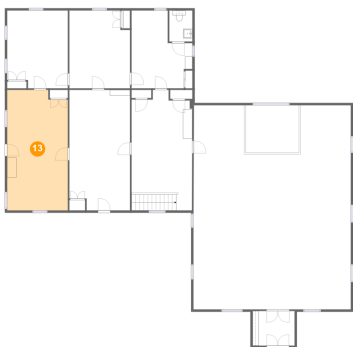
12 Floor 2 - Room



Max Dimensions: 13'0" x 16'8"  
Calculated Area: 209 sq. ft  
Included: Yes

Heated: Yes  
Finished: Yes  
Enclosed: Yes  
Contiguous: Yes  
Permitted: Yes  
Wet space: No  
Addition: No  
Conversion: No

13 Floor 2 - Room



Max Dimensions: 13'0" x 25'10"  
Calculated Area: 328 sq. ft  
Included: Yes

Heated: Yes  
Finished: Yes  
Enclosed: Yes  
Contiguous: Yes  
Permitted: Yes  
Wet space: No  
Addition: No  
Conversion: No

14 Floor 2 - Room



Max Dimensions: 13'1" x 16'8"  
Calculated Area: 173 sq. ft  
Included: Yes

Heated: Yes  
Finished: Yes  
Enclosed: Yes  
Contiguous: Yes  
Permitted: Yes  
Wet space: No  
Addition: No  
Conversion: No