

Home report

1451 Northeast Parkside Drive, Hillsboro, Washington County,
Oregon, United States, 97124



Total Area: 2001 sq. ft

Floor 1: 1017 sq. ft, Floor 2: 984 sq. ft

Excluded: Garage 364 sq. ft, Outdoor Deck 199 sq. ft, Opentobelow 174 sq. ft, Walls: 176 sq. ft

Property summary

 **2** Floors

 **3** Bedrooms

 **2** Bathrooms

Home report

**1451 Northeast Parkside Drive, Hillsboro, Washington County,
Oregon, United States, 97124**



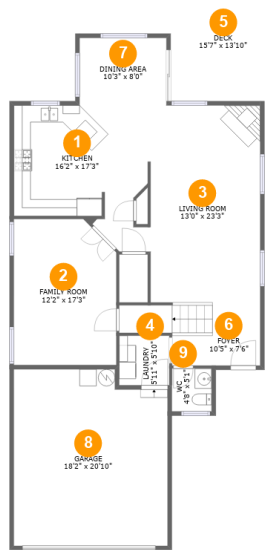
1
Half baths



1
Garages

Home report

1451 Northeast Parkside Drive, Hillsboro, Washington County,
Oregon, United States, 97124



Room dimensions

Floor 1

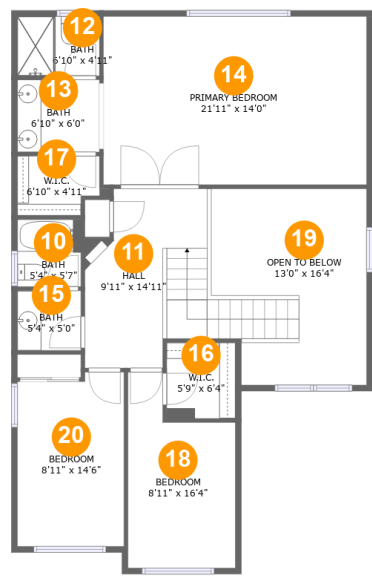
Total:1017sqft

Excluded: 563sqft

#		Max Dimensions	sqft	Included
1	Kitchen	16'2" x 17'3"	224 sq. ft	Yes
2	Family Room	12'2" x 17'3"	201 sq. ft	Yes
3	Living Room	13'0" x 23'3"	302 sq. ft	Yes
4	Laundry	5'11" x 5'10"	35 sq. ft	Yes
5	Deck	15'7" x 13'10"	199 sq. ft	No
6	Foyer	10'5" x 7'6"	98 sq. ft	Yes
7	Dining Area	10'3" x 8'0"	82 sq. ft	Yes
8	Garage	18'2" x 20'10"	364 sq. ft	No
9	WC	4'8" x 5'1"	24 sq. ft	Yes

Home report

1451 Northeast Parkside Drive, Hillsboro, Washington County,
Oregon, United States, 97124



Room dimensions

Floor 2

Total:984sqft

Excluded: 174sqft

#		Max Dimensions	sqft	Included
10	Bath	5'4" x 5'7"	30 sq. ft	Yes
11	Hall	9'11" x 14'11"	165 sq. ft	Yes
12	Bath	6'10" x 4'11"	34 sq. ft	Yes
13	Bath	6'10" x 6'0"	41 sq. ft	Yes
14	Primary Bedroom	21'11" x 14'0"	308 sq. ft	Yes
15	Bath	5'4" x 5'0"	26 sq. ft	Yes
16	W.I.C.	5'9" x 6'4"	36 sq. ft	Yes
17	W.I.C.	6'10" x 4'11"	32 sq. ft	Yes
18	Bedroom	8'11" x 16'4"	121 sq. ft	Yes
19	Open To Below	13'0" x 16'4"	174 sq. ft	No
20	Bedroom	8'11" x 14'6"	125 sq. ft	Yes

1451 Northeast Parkside Drive, Hillsboro, Washington County,
Oregon, United States, 97124

1 Floor 1 - Kitchen



Max Dimensions: 16'2" x
17'3"
Calculated Area: 224 sq. ft
Included: Yes

Heated: Yes
Finished: Yes
Enclosed: Yes
Contiguous:
Yes
Permitted: Yes
Wet space: No
Addition: No
Conversion: No

2 Floor 1 - Family Room

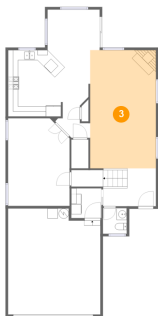


Max Dimensions: 12'2" x
17'3"
Calculated Area: 201 sq. ft
Included: Yes

Heated: Yes
Finished: Yes
Enclosed: Yes
Contiguous:
Yes
Permitted: Yes
Wet space: No
Addition: No
Conversion: No

1451 Northeast Parkside Drive, Hillsboro, Washington County,
Oregon, United States, 97124

3 Floor 1 - Living Room



Max Dimensions: 13'0" x 23'3"
Calculated Area: 302 sq. ft
Included: Yes

Heated: Yes
Finished: Yes
Enclosed: Yes
Contiguous: Yes
Permitted: Yes
Wet space: No
Addition: No
Conversion: No

4 Floor 1 - Laundry



Max Dimensions: 5'11" x 5'10"
Calculated Area: 35 sq. ft
Included: Yes

Heated: Yes
Finished: Yes
Enclosed: Yes
Contiguous: Yes
Permitted: Yes
Wet space: No
Addition: No
Conversion: No

5 Floor 1 - Deck



Max Dimensions: 15'7" x 13'10"
Calculated Area: 199 sq. ft
Included: No

Heated: No
Finished: Yes
Enclosed: No
Contiguous: Yes
Permitted: Yes
Wet space: No
Addition: No
Conversion: No

1451 Northeast Parkside Drive, Hillsboro, Washington County,
Oregon, United States, 97124

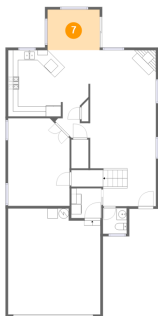
6 Floor 1 - Foyer



Max Dimensions: 10'5" x 7'6"
Calculated Area: 98 sq. ft
Included: Yes

Heated: Yes
Finished: Yes
Enclosed: Yes
Contiguous: Yes
Permitted: Yes
Wet space: No
Addition: No
Conversion: No

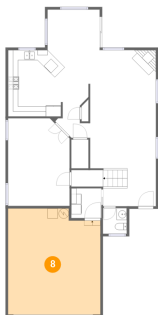
7 Floor 1 - Dining Area



Max Dimensions: 10'3" x 8'0"
Calculated Area: 82 sq. ft
Included: Yes

Heated: Yes
Finished: Yes
Enclosed: Yes
Contiguous: Yes
Permitted: Yes
Wet space: No
Addition: No
Conversion: No

8 Floor 1 - Garage

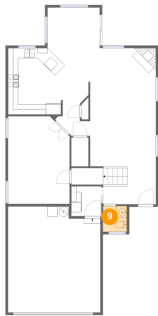


Max Dimensions: 18'2" x 20'10"
Calculated Area: 364 sq. ft
Included: No

Heated: No
Finished: No
Enclosed: Yes
Contiguous: Yes
Permitted: Yes
Wet space: No
Addition: No
Conversion: No

1451 Northeast Parkside Drive, Hillsboro, Washington County,
Oregon, United States, 97124

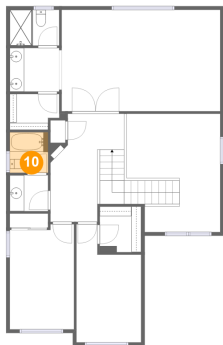
9 Floor 1 - WC



Max Dimensions: 4'8" x 5'1"
Calculated Area: 24 sq. ft
Included: Yes

Heated: Yes
Finished: Yes
Enclosed: Yes
Contiguous: Yes
Permitted: Yes
Wet space: Yes
Addition: No
Conversion: No

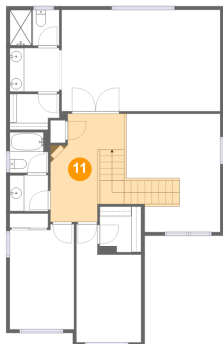
10 Floor 2 - Bath



Max Dimensions: 5'4" x 5'7"
Calculated Area: 30 sq. ft
Included: Yes

Heated: Yes
Finished: Yes
Enclosed: Yes
Contiguous: Yes
Permitted: Yes
Wet space: Yes
Addition: No
Conversion: No

11 Floor 2 - Hall

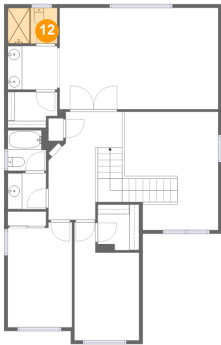


Max Dimensions: 9'11" x 14'11"
Calculated Area: 165 sq. ft
Included: Yes

Heated: Yes
Finished: Yes
Enclosed: Yes
Contiguous: Yes
Permitted: Yes
Wet space: No
Addition: No
Conversion: No

1451 Northeast Parkside Drive, Hillsboro, Washington County,
Oregon, United States, 97124

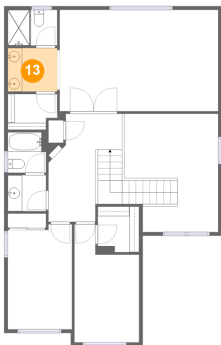
12 Floor 2 - Bath



Max Dimensions: 6'10" x 4'11"
Calculated Area: 34 sq. ft
Included: Yes

Heated: Yes
Finished: Yes
Enclosed: Yes
Contiguous: Yes
Permitted: Yes
Wet space: Yes
Addition: No
Conversion: No

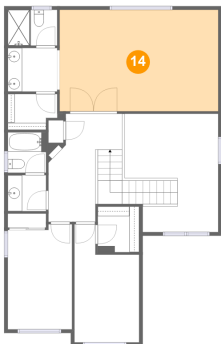
13 Floor 2 - Bath



Max Dimensions: 6'10" x 6'0"
Calculated Area: 41 sq. ft
Included: Yes

Heated: Yes
Finished: Yes
Enclosed: Yes
Contiguous: Yes
Permitted: Yes
Wet space: Yes
Addition: No
Conversion: No

14 Floor 2 - Primary Bedroom



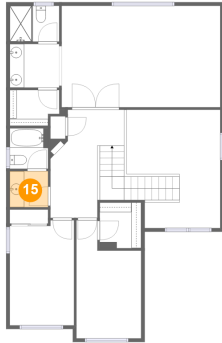
Max Dimensions: 21'11" x 14'0"
Calculated Area: 308 sq. ft
Included: Yes

Heated: Yes
Finished: Yes
Enclosed: Yes
Contiguous: Yes
Permitted: Yes
Wet space: No
Addition: No
Conversion: No

Home report

1451 Northeast Parkside Drive, Hillsboro, Washington County,
Oregon, United States, 97124

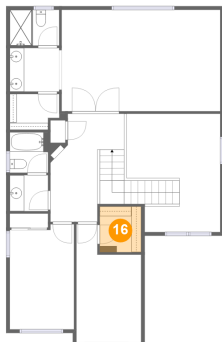
15 Floor 2 - Bath



Max Dimensions: 5'4" x 5'0"
Calculated Area: 26 sq. ft
Included: Yes

Heated: Yes
Finished: Yes
Enclosed: Yes
Contiguous: Yes
Permitted: Yes
Wet space: Yes
Addition: No
Conversion: No

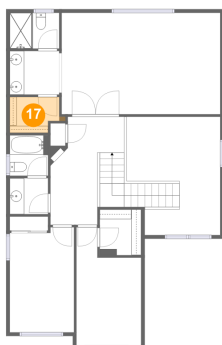
16 Floor 2 - W.I.C.



Max Dimensions: 5'9" x 6'4"
Calculated Area: 36 sq. ft
Included: Yes

Heated: Yes
Finished: Yes
Enclosed: Yes
Contiguous: Yes
Permitted: Yes
Wet space: No
Addition: No
Conversion: No

17 Floor 2 - W.I.C.

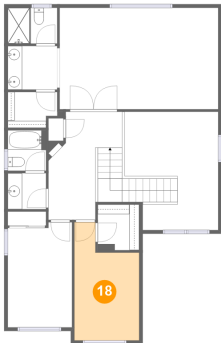


Max Dimensions: 6'10" x
4'11"
Calculated Area: 32 sq. ft
Included: Yes

Heated: Yes
Finished: Yes
Enclosed: Yes
Contiguous:
Yes
Permitted: Yes
Wet space: No
Addition: No
Conversion: No

1451 Northeast Parkside Drive, Hillsboro, Washington County,
Oregon, United States, 97124

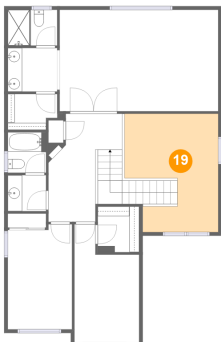
18 Floor 2 - Bedroom



Max Dimensions: 8'11" x 16'4"
Calculated Area: 121 sq. ft
Included: Yes

Heated: Yes
Finished: Yes
Enclosed: Yes
Contiguous: Yes
Permitted: Yes
Wet space: No
Addition: No
Conversion: No

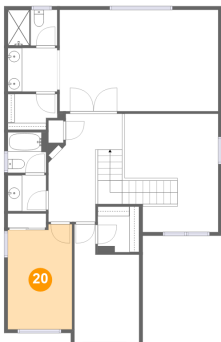
19 Floor 2 - Open To Below



Max Dimensions: 13'0" x 16'4"
Calculated Area: 174 sq. ft
Included: No

Heated: No
Finished: No
Enclosed: No
Contiguous: Yes
Permitted: No
Wet space: No
Addition: No
Conversion: No

20 Floor 2 - Bedroom



Max Dimensions: 8'11" x 14'6"
Calculated Area: 125 sq. ft
Included: Yes

Heated: Yes
Finished: Yes
Enclosed: Yes
Contiguous: Yes
Permitted: Yes
Wet space: No
Addition: No
Conversion: No