


260 Frost Hill Road, Marlborough, Cheshire County, New Hampshire, United States, 03455



Property summary

 **1** Garages

 **9** Bedrooms

 **4** Bathrooms

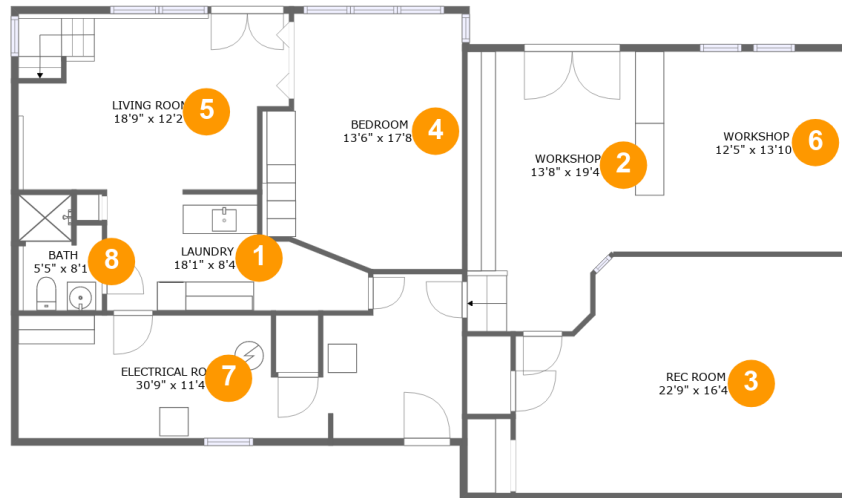
 **0** Half baths

 **4** Floors

 **5,036** Gross living area sqft

 **6,426** Total sqft

260 Frost Hill Road, Marlborough, Cheshire County, New Hampshire, United States, 03455



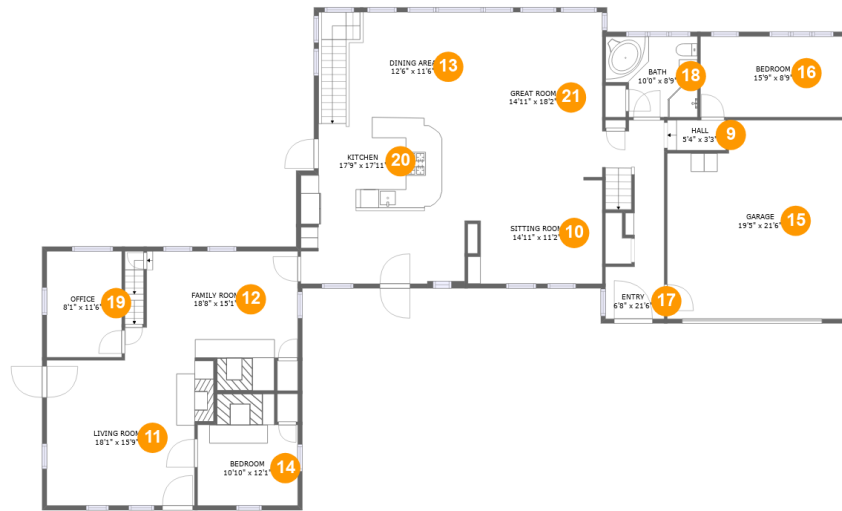
Room dimensions

Floor 1

Total sqft: 1802 Living area: 1072

#		Dimensions	sqft	Counted as living area
1	Utility	18'1" x 8'4"	116 sq. ft	Yes
2	Recreation Room	13'8" x 19'4"	236 sq. ft	No
3	Rec Room	22'9" x 16'4"	342 sq. ft	Yes
4	Bedroom	13'6" x 17'8"	220 sq. ft	Yes
5	Living Room	18'9" x 12'2"	214 sq. ft	Yes
6	Recreation Room	12'5" x 13'10"	173 sq. ft	No
7	Room	30'9" x 11'4"	263 sq. ft	No
8	Bath	5'5" x 8'1"	41 sq. ft	Yes

260 Frost Hill Road, Marlborough, Cheshire County, New Hampshire, United States, 03455



Room dimensions

Floor 2

Total sqft: 2627 Living area: 2189

#		Dimensions	sqft	Counted as living area
9	Hall	5'4" x 3'3"	21 sq. ft	No
10	Living Room	14'11" x 11'2"	159 sq. ft	Yes
11	Living Room	18'1" x 15'9"	265 sq. ft	Yes
12	Living Room	18'8" x 15'1"	221 sq. ft	Yes
13	Dining Room	12'6" x 11'6"	139 sq. ft	Yes
14	Bedroom	10'10" x 12'1"	116 sq. ft	Yes
15	Garage	19'5" x 21'6"	393 sq. ft	No
16	Bedroom	15'9" x 8'9"	138 sq. ft	Yes
17	Entry	6'8" x 21'6"	117 sq. ft	Yes
18	Bath	10'0" x 8'9"	78 sq. ft	Yes
19	Office	8'1" x 11'6"	93 sq. ft	Yes

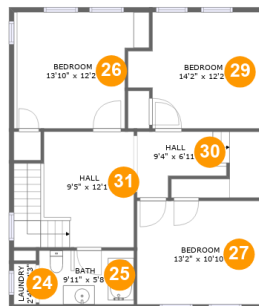
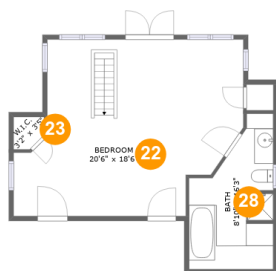
Scan captured on Mon, 11 Nov 2024 23:14:43 GMT

Information is calculated by Cubicasa technology deemed highly reliable but not guaranteed.

**260 Frost Hill Road, Marlborough, Cheshire County,
New Hampshire, United States, 03455**

#		Dimensions	sqft	Counted as living area
20	Kitchen	17'9" x 17'11"	347 sq. ft	Yes
21	Living Room	14'11" x 18'2"	271 sq. ft	Yes

260 Frost Hill Road, Marlborough, Cheshire County, New Hampshire, United States, 03455



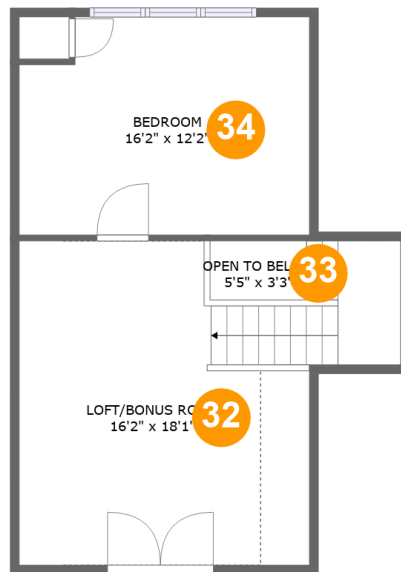
Room dimensions

Floor 3

Total sqft: 1415 Living area: 1363

#		Dimensions	sqft	Counted as living area
22	Bedroom	20'6" x 18'6"	369 sq. ft	Yes
23	Cl	3'2" x 3'5"	10 sq. ft	Yes
24	Utility	2'4" x 4'3"	10 sq. ft	Yes
25	Bath	9'11" x 5'8"	56 sq. ft	Yes
26	Bedroom	13'10" x 12'2"	151 sq. ft	Yes
27	Bedroom	13'2" x 10'10"	143 sq. ft	Yes
28	Bath	8'10" x 16'3"	66 sq. ft	Yes
29	Bedroom	14'2" x 12'2"	151 sq. ft	Yes
30	Hall	9'4" x 6'11"	88 sq. ft	Yes
31	Hall	9'5" x 12'1"	142 sq. ft	Yes

260 Frost Hill Road, Marlborough, Cheshire County,
New Hampshire, United States, 03455



Room dimensions

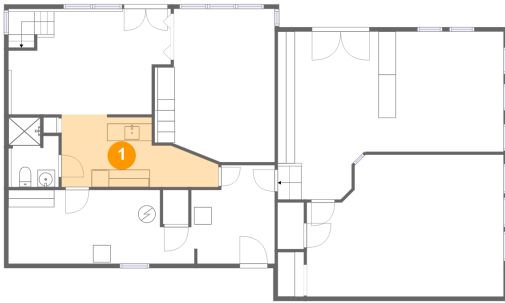
Floor 4

Total sqft: 582 Living area: 412

#		Dimensions	sqft	Counted as living area
32	LOFT/BONUS Room	16'2" x 18'1"	237 sq. ft	Yes
33	Open To Below	5'5" x 3'3"	18 sq. ft	No
34	Bedroom	16'2" x 12'2"	140 sq. ft	Yes

**260 Frost Hill Road, Marlborough, Cheshire County,
New Hampshire, United States, 03455**

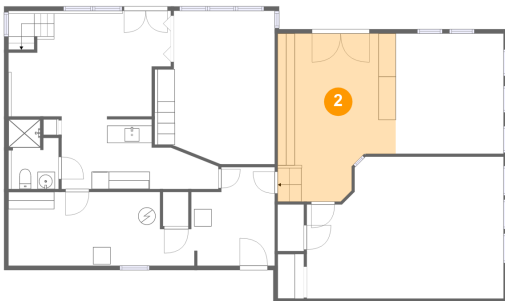
1 Floor 1 - Utility



Dimensions: 18'1" x 8'4"
Area: 116 sq. ft
Counted as living area: Yes

Heated: Yes
Finished: Yes
Enclosed: Yes
Contiguous: Yes
Permitted: Yes
Wet space: No
Addition: No
Conversion: No

2 Floor 1 - Recreation Room

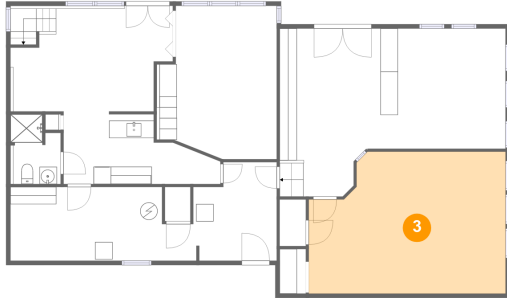


Dimensions: 13'8" x 19'4"
Area: 236 sq. ft
Counted as living area: No

Heated: No
Finished: No
Enclosed: Yes
Contiguous: Yes
Permitted: Yes
Wet space: No
Addition: No
Conversion: No

260 Frost Hill Road, Marlborough, Cheshire County,
New Hampshire, United States, 03455

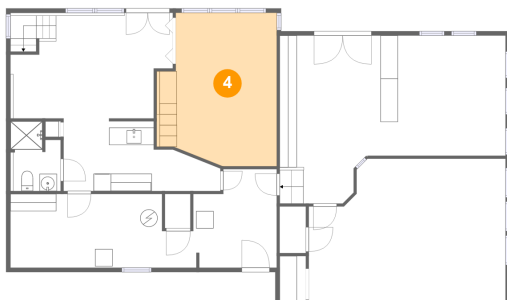
3 Floor 1 - Rec Room



Dimensions: 22'9" x 16'4"
Area: 342 sq. ft
Counted as living area: Yes

Heated: Yes
Finished: Yes
Enclosed: Yes
Contiguous: Yes
Permitted: Yes
Wet space: No
Addition: No
Conversion: No

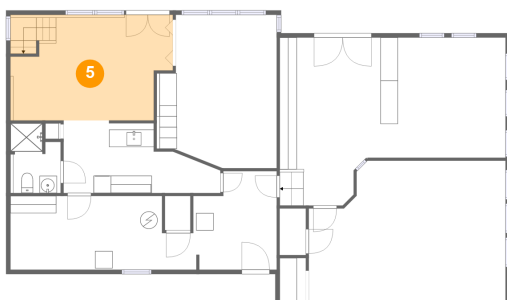
4 Floor 1 - Bedroom



Dimensions: 13'6" x 17'8"
Area: 220 sq. ft
Counted as living area: Yes

Heated: Yes
Finished: Yes
Enclosed: Yes
Contiguous: Yes
Permitted: Yes
Wet space: No
Addition: No
Conversion: No

5 Floor 1 - Living Room



Dimensions: 18'9" x 12'2"
Area: 214 sq. ft
Counted as living area: Yes

Heated: Yes
Finished: Yes
Enclosed: Yes
Contiguous: Yes
Permitted: Yes
Wet space: No
Addition: No
Conversion: No

**260 Frost Hill Road, Marlborough, Cheshire County,
New Hampshire, United States, 03455**

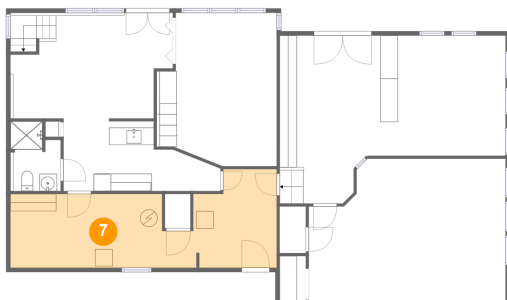
6 Floor 1 - Recreation Room



Dimensions: 12'5" x 13'10"
Area: 173 sq. ft
Counted as living area: No

Heated: No
Finished: No
Enclosed: Yes
Contiguous: No
Permitted: Yes
Wet space: No
Addition: No
Conversion: No

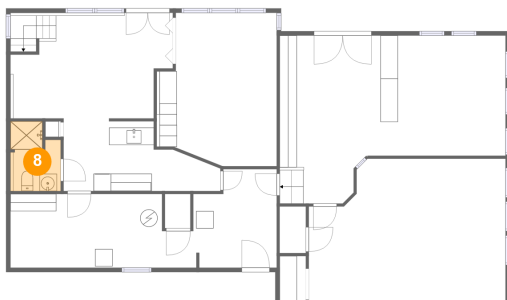
7 Floor 1 - Room



Dimensions: 30'9" x 11'4"
Area: 263 sq. ft
Counted as living area: No

Heated: No
Finished: No
Enclosed: Yes
Contiguous: Yes
Permitted: Yes
Wet space: No
Addition: No
Conversion: No

8 Floor 1 - Bath



Dimensions: 5'5" x 8'1"
Area: 41 sq. ft
Counted as living area: Yes

Heated: Yes
Finished: Yes
Enclosed: Yes
Contiguous: Yes
Permitted: Yes
Wet space: Yes
Addition: No
Conversion: No

260 Frost Hill Road, Marlborough, Cheshire County,
New Hampshire, United States, 03455

9 Floor 2 - Hall



Dimensions: 5'4" x 3'3"
Area: 21 sq. ft
Counted as living area: No

Heated: Yes
Finished: Yes
Enclosed: Yes
Contiguous: Yes
Permitted: Yes
Wet space: No
Addition: No
Conversion: No

10 Floor 2 - Living Room



Dimensions: 14'11" x 11'2"
Area: 159 sq. ft
Counted as living area: Yes

Heated: Yes
Finished: Yes
Enclosed: Yes
Contiguous: Yes
Permitted: Yes
Wet space: No
Addition: No
Conversion: No

11 Floor 2 - Living Room



Dimensions: 18'1" x 15'9"
Area: 265 sq. ft
Counted as living area: Yes

Heated: Yes
Finished: Yes
Enclosed: Yes
Contiguous: Yes
Permitted: Yes
Wet space: No
Addition: No
Conversion: No

260 Frost Hill Road, Marlborough, Cheshire County,
New Hampshire, United States, 03455

12 Floor 2 - Living Room



Dimensions: 18'8" x 15'1"
Area: 221 sq. ft
Counted as living area: Yes

Heated: Yes
Finished: Yes
Enclosed: Yes
Contiguous: Yes
Permitted: Yes
Wet space: No
Addition: No
Conversion: No

13 Floor 2 - Dining Room



Dimensions: 12'6" x 11'6"
Area: 139 sq. ft
Counted as living area: Yes

Heated: Yes
Finished: Yes
Enclosed: Yes
Contiguous: Yes
Permitted: Yes
Wet space: No
Addition: No
Conversion: No

14 Floor 2 - Bedroom



Dimensions: 10'10" x 12'1"
Area: 116 sq. ft
Counted as living area: Yes

Heated: Yes
Finished: Yes
Enclosed: Yes
Contiguous: Yes
Permitted: Yes
Wet space: No
Addition: No
Conversion: No

260 Frost Hill Road, Marlborough, Cheshire County, New Hampshire, United States, 03455

15 Floor 2 - Garage



Dimensions: 19'5" x 21'6"
Area: 393 sq. ft
Counted as living area: No

Heated: No
Finished: No
Enclosed: Yes
Contiguous: Yes
Permitted: Yes
Wet space: No
Addition: No
Conversion: No

16 Floor 2 - Bedroom



Dimensions: 15'9" x 8'9"
Area: 138 sq. ft
Counted as living area: Yes

Heated: Yes
Finished: Yes
Enclosed: Yes
Contiguous: Yes
Permitted: Yes
Wet space: No
Addition: No
Conversion: No

17 Floor 2 - Entry

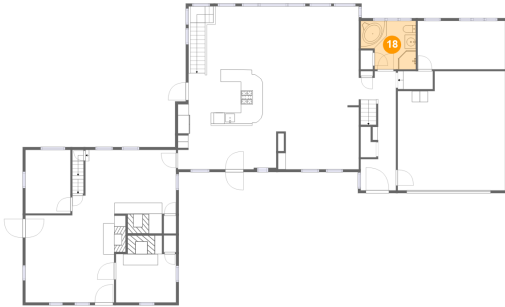


Dimensions: 6'8" x 21'6"
Area: 117 sq. ft
Counted as living area: Yes

Heated: Yes
Finished: Yes
Enclosed: Yes
Contiguous: Yes
Permitted: Yes
Wet space: No
Addition: No
Conversion: No

260 Frost Hill Road, Marlborough, Cheshire County, New Hampshire, United States, 03455

18 Floor 2 - Bath



Dimensions: 10'0" x 8'9"
Area: 78 sq. ft
Counted as living area: Yes

Heated: Yes
Finished: Yes
Enclosed: Yes
Contiguous: Yes
Permitted: Yes
Wet space: Yes
Addition: No
Conversion: No

19 Floor 2 - Office



Dimensions: 8'1" x 11'6"
Area: 93 sq. ft
Counted as living area: Yes

Heated: Yes
Finished: Yes
Enclosed: Yes
Contiguous: Yes
Permitted: Yes
Wet space: No
Addition: No
Conversion: No

20 Floor 2 - Kitchen

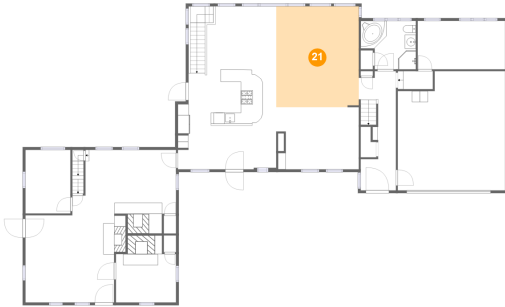


Dimensions: 17'9" x 17'11"
Area: 347 sq. ft
Counted as living area: Yes

Heated: Yes
Finished: Yes
Enclosed: Yes
Contiguous: Yes
Permitted: Yes
Wet space: No
Addition: No
Conversion: No

**260 Frost Hill Road, Marlborough, Cheshire County,
New Hampshire, United States, 03455**

21 Floor 2 - Living Room



Dimensions: 14'11" x 18'2"
Area: 271 sq. ft
Counted as living area: Yes

Heated: Yes
Finished: Yes
Enclosed: Yes
Contiguous: Yes
Permitted: Yes
Wet space: No
Addition: No
Conversion: No

22 Floor 3 - Bedroom



Dimensions: 20'6" x 18'6"
Area: 369 sq. ft
Counted as living area: Yes

Heated: Yes
Finished: Yes
Enclosed: Yes
Contiguous: Yes
Permitted: Yes
Wet space: No
Addition: No
Conversion: No

23 Floor 3 - Cl

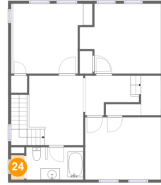


Dimensions: 3'2" x 3'5"
Area: 10 sq. ft
Counted as living area: Yes

Heated: Yes
Finished: Yes
Enclosed: Yes
Contiguous: Yes
Permitted: Yes
Wet space: No
Addition: No
Conversion: No

**260 Frost Hill Road, Marlborough, Cheshire County,
New Hampshire, United States, 03455**

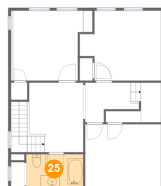
24 Floor 3 - Utility



Dimensions: 2'4" x 4'3"
Area: 10 sq. ft
Counted as living area: Yes

Heated: Yes
Finished: Yes
Enclosed: Yes
Contiguous: Yes
Permitted: Yes
Wet space: No
Addition: No
Conversion: No

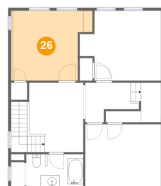
25 Floor 3 - Bath



Dimensions: 9'11" x 5'8"
Area: 56 sq. ft
Counted as living area: Yes

Heated: Yes
Finished: Yes
Enclosed: Yes
Contiguous: Yes
Permitted: Yes
Wet space: Yes
Addition: No
Conversion: No

26 Floor 3 - Bedroom

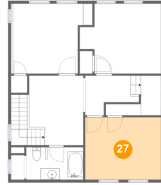


Dimensions: 13'10" x 12'2"
Area: 151 sq. ft
Counted as living area: Yes

Heated: Yes
Finished: Yes
Enclosed: Yes
Contiguous: Yes
Permitted: Yes
Wet space: No
Addition: No
Conversion: No

**260 Frost Hill Road, Marlborough, Cheshire County,
New Hampshire, United States, 03455**

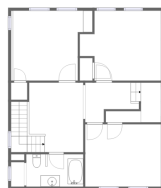
27 Floor 3 - Bedroom



Dimensions: 13'2" x 10'10"
Area: 143 sq. ft
Counted as living area: Yes

Heated: Yes
Finished: Yes
Enclosed: Yes
Contiguous: Yes
Permitted: Yes
Wet space: No
Addition: No
Conversion: No

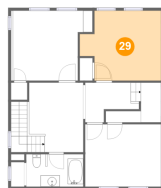
28 Floor 3 - Bath



Dimensions: 8'10" x 16'3"
Area: 66 sq. ft
Counted as living area: Yes

Heated: Yes
Finished: Yes
Enclosed: Yes
Contiguous: Yes
Permitted: Yes
Wet space: Yes
Addition: No
Conversion: No

29 Floor 3 - Bedroom

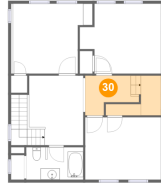


Dimensions: 14'2" x 12'2"
Area: 151 sq. ft
Counted as living area: Yes

Heated: Yes
Finished: Yes
Enclosed: Yes
Contiguous: Yes
Permitted: Yes
Wet space: No
Addition: No
Conversion: No

**260 Frost Hill Road, Marlborough, Cheshire County,
New Hampshire, United States, 03455**

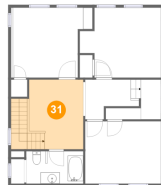
30 Floor 3 - Hall



Dimensions: 9'4" x 6'11"
Area: 88 sq. ft
Counted as living area: Yes

Heated: Yes
Finished: Yes
Enclosed: Yes
Contiguous: Yes
Permitted: Yes
Wet space: No
Addition: No
Conversion: No

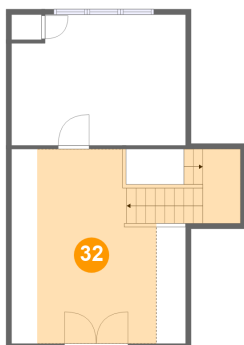
31 Floor 3 - Hall



Dimensions: 9'5" x 12'1"
Area: 142 sq. ft
Counted as living area: Yes

Heated: Yes
Finished: Yes
Enclosed: Yes
Contiguous: Yes
Permitted: Yes
Wet space: No
Addition: No
Conversion: No

32 Floor 4 - LOFT/BONUS Room

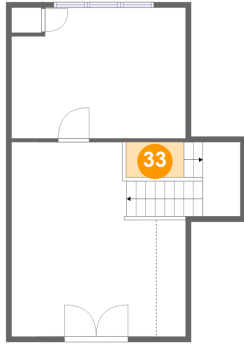


Dimensions: 16'2" x 18'1"
Area: 237 sq. ft
Counted as living area: Yes

Heated: Yes
Finished: Yes
Enclosed: Yes
Contiguous: Yes
Permitted: Yes
Wet space: No
Addition: No
Conversion: No

**260 Frost Hill Road, Marlborough, Cheshire County,
New Hampshire, United States, 03455**

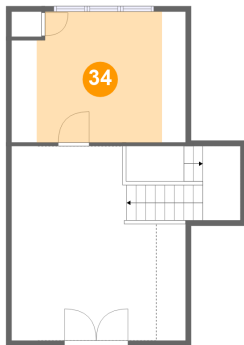
33 Floor 4 - Open To Below



Dimensions: 5'5" x 3'3"
Area: 18 sq. ft
Counted as living area: No

Heated: No
Finished: No
Enclosed: No
Contiguous: Yes
Permitted: No
Wet space: No
Addition: No
Conversion: No

34 Floor 4 - Bedroom



Dimensions: 16'2" x 12'2"
Area: 140 sq. ft
Counted as living area: Yes

Heated: Yes
Finished: Yes
Enclosed: Yes
Contiguous: Yes
Permitted: Yes
Wet space: No
Addition: No
Conversion: No