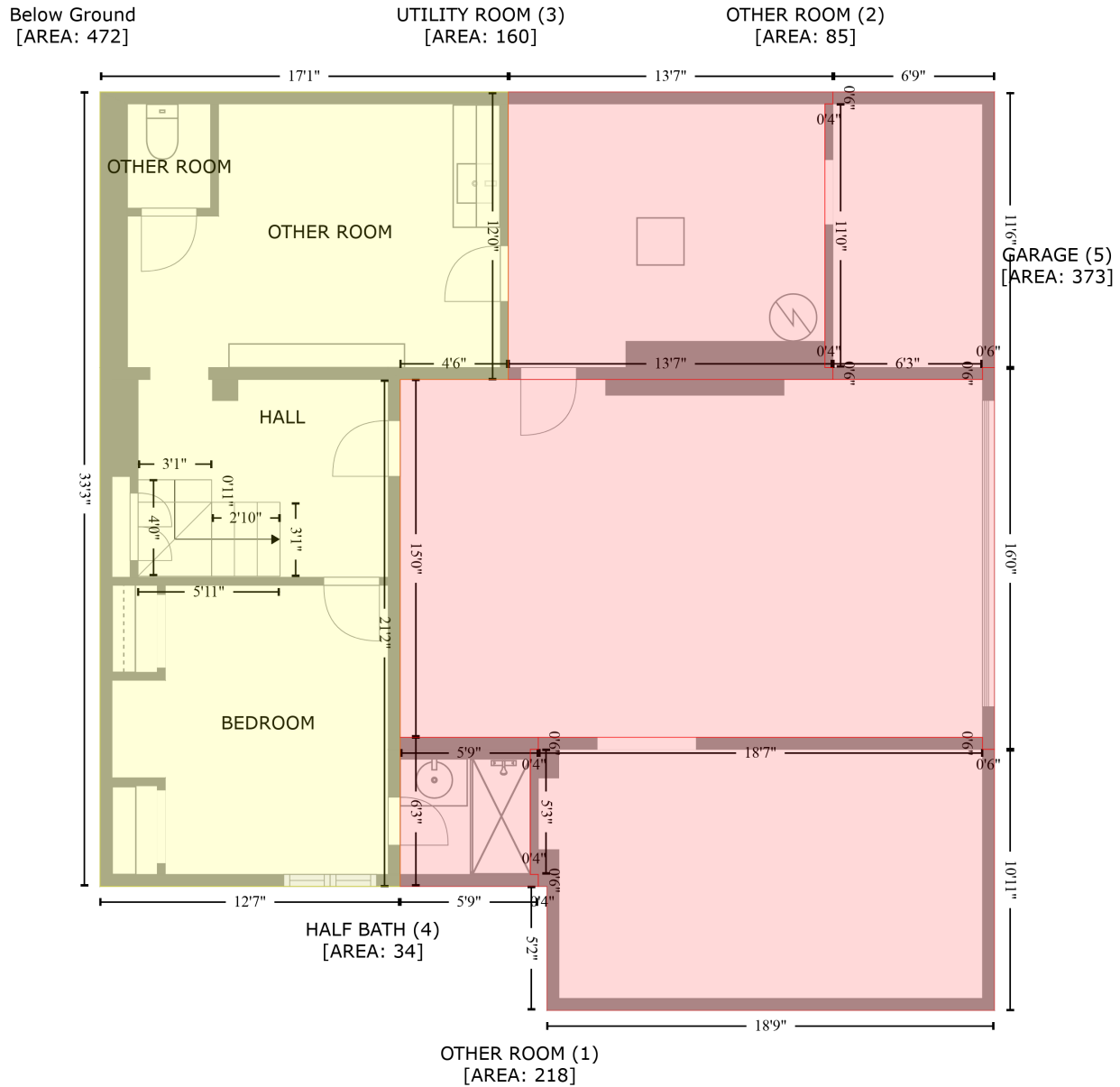


6812 Carolyn Road, Kenwood Hill, Louisville, Jefferson County, Kentucky, United States, 40214

Gross Living Area: 2701 sq. ft



Space	Area (sq. ft)	Calculation <small>Coordinate Polygon Area Algorithm using inches</small>
Below Ground (Living area)	472	$-((256.6 + 256.6) * (225.1 - 369.4) + (256.6 + 202.3) * (369.4 - 369.4) + (202.3 + 202.3) * (369.4 - 623.7) + (202.3 + 51.5) * (623.7 - 623.7) + (51.5 + 51.5) * (623.7 - 225.1) + (51.5 + 256.6) * (225.1 - 225.1)) * 0.5 * 0.00694$
OTHER ROOM (Non-living area)	218	$-((494.9 + 494.9) * (548.9 - 554.9) + (494.9 + 500.9) * (554.9 - 554.9) + (500.9 + 500.9) * (554.9 - 685.9) + (500.9 + 276) * (685.9 - 685.9) + (276 + 276) * (685.9 - 623.7) + (276 + 271.7) * (623.7 - 623.7) + (271.7 + 271.7) * (623.7 - 617.7) + (271.7 + 267.7) * (617.7 - 617.7) + (267.7 + 267.7) * (617.7 - 617.7)) * 0.5 * 0.00694$

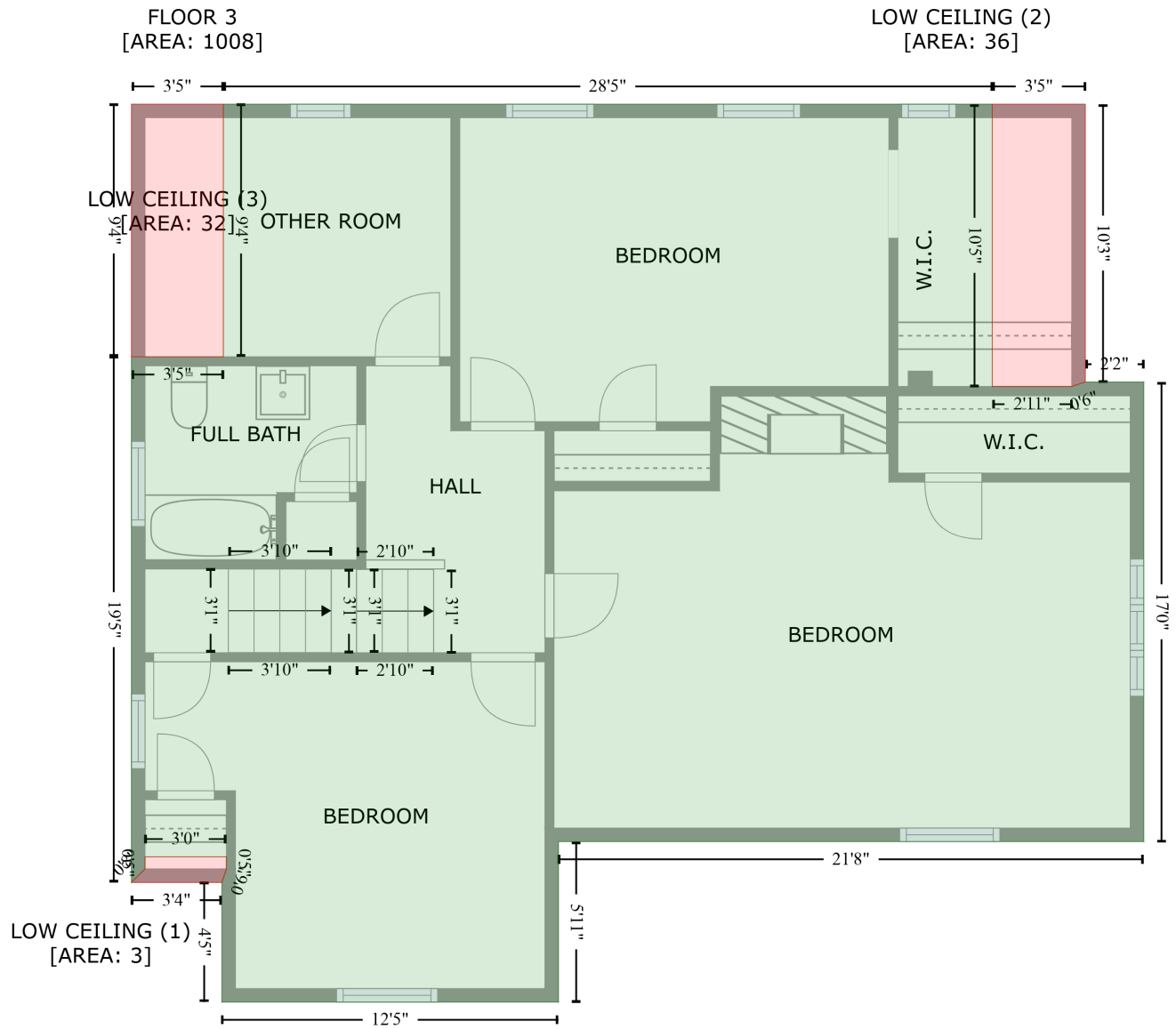
6812 Carolyn Road, Kenwood Hill, Louisville, Jefferson County, Kentucky, United States, 40214

Gross Living Area: 2701 sq. ft

Space	Area (sq. ft)	Calculation <small>Coordinate Polygon Area Algorithm using inches</small>
OTHER ROOM (Non-living area)	85	$(617.7 - 554.9) + (267.7 + 271.7) * (554.9 - 554.9) + (271.7 + 271.7) * (554.9 - 548.9) + (271.7 + 494.9) * (548.9 - 548.9)) * 0.5 * 0.00694$
UTILITY ROOM (Non-living area)	160	$-((500.9 + 500.9) * (225.1 - 363.4) + (500.9 + 494.9) * (363.4 - 363.4) + (494.9 + 494.9) * (363.4 - 369.4) + (494.9 + 419.7) * (369.4 - 369.4) + (419.7 + 419.7) * (369.4 - 363.4) + (419.7 + 415.7) * (363.4 - 363.4) + (415.7 + 415.7) * (363.4 - 231.1) + (415.7 + 419.7) * (231.1 - 231.1) + (419.7 + 419.7) * (231.1 - 225.1) + (419.7 + 500.9) * (225.1 - 225.1)) * 0.5 * 0.00694$
HALF BATH (Non-living area)	34	$-((271.7 + 271.7) * (548.9 - 554.9) + (271.7 + 267.7) * (554.9 - 554.9) + (267.7 + 267.7) * (554.9 - 617.7) + (267.7 + 271.7) * (617.7 - 617.7) + (271.7 + 271.7) * (617.7 - 623.7) + (271.7 + 202.3) * (623.7 - 623.7) + (202.3 + 202.3) * (623.7 - 548.9) + (202.3 + 271.7) * (548.9 - 548.9)) * 0.5 * 0.00694$
GARAGE (Non-living area)	373	$-((500.9 + 500.9) * (363.4 - 554.9) + (500.9 + 494.9) * (554.9 - 554.9) + (494.9 + 494.9) * (554.9 - 548.9) + (494.9 + 202.3) * (548.9 - 548.9) + (202.3 + 202.3) * (548.9 - 369.4) + (202.3 + 494.9) * (369.4 - 369.4) + (494.9 + 494.9) * (369.4 - 363.4) + (494.9 + 500.9) * (363.4 - 363.4)) * 0.5 * 0.00694$

6812 Carolyn Road, Kenwood Hill, Louisville, Jefferson County, Kentucky, United States, 40214

Gross Living Area: 2701 sq. ft



Space	Area (sq. ft)	Calculation <small>Coordinate Polygon Area Algorithm using inches</small>
FLOOR 3 (Living area)	1008	$-\left((433.6 + 433.6) * (225.1 - 350.4) + (433.6 + 468.9) * (350.4 - 350.4) + (468.9 + 474.9) * (350.4 - 348.4) + (474.9 + 500.9) * (348.4 - 348.4) + (500.9 + 500.9) * (348.4 - 552.5) + (500.9 + 241) * (552.5 - 552.5) + (241 + 241) * (552.5 - 623.7) + (241 + 91.6) * (623.7 - 623.7) + (91.6 + 91.6) * (623.7 - 570.6) + (91.6 + 93.6) * (570.6 - 564.6) + (93.6 + 93.6) * (564.6 - 559.2) + (93.6 + 57.5) * (559.2 - 559.2) + (57.5 + 57.5) * (559.2 - 564.6) + (57.5 + 51.5) * (564.6 - 570.6) + (51.5 + 51.5) * (570.6 - 337.2) + (51.5 + 92.3) * (337.2 - 337.2) + (92.3 + 92.3) * (337.2 - 225.1) + (92.3 + 433.6) * (225.1 - 225.1)\right) * 0.5 * 0.00694$
LOW CEILING	3	$-\left((93.6 + 93.6) * (559.2 - 564.6) + (93.6 + 91.6) * (564.6 - 570.6) + (91.6 + 51.5) * (570.6 - 570.6)\right)$

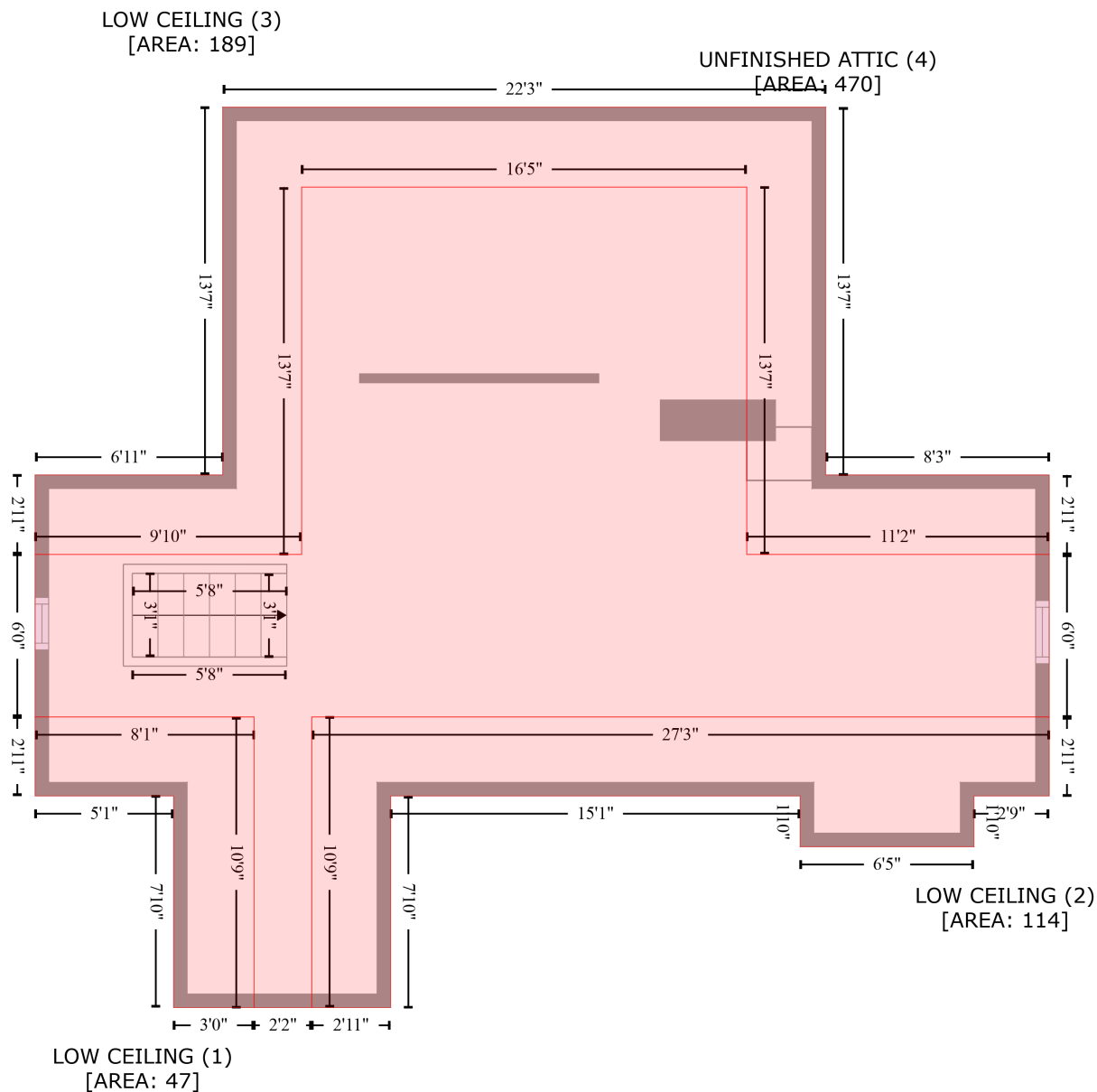
6812 Carolyn Road, Kenwood Hill, Louisville, Jefferson County, Kentucky, United States, 40214

Gross Living Area: 2701 sq. ft

Space	Area (sq. ft)	Calculation <small>Coordinate Polygon Area Algorithm using inches</small>
(Non-living area)		$+ (51.5 + 57.5) * (570.6 - 564.6) + (57.5 + 57.5) * (564.6 - 559.2) + (57.5 + 93.6) * (559.2 - 559.2) * 0.5 * 0.00694$
LOW CEILING (Non-living area)	36	$-((474.9 + 474.9) * (225.1 - 348.4) + (474.9 + 468.9) * (348.4 - 350.4) + (468.9 + 433.6) * (350.4 - 350.4) + (433.6 + 433.6) * (350.4 - 225.1) + (433.6 + 474.9) * (225.1 - 225.1)) * 0.5 * 0.00694$
LOW CEILING (Non-living area)	32	$-((92.3 + 92.3) * (225.1 - 337.2) + (92.3 + 51.5) * (337.2 - 337.2) + (51.5 + 51.5) * (337.2 - 225.1) + (51.5 + 92.3) * (225.1 - 225.1)) * 0.5 * 0.00694$

6812 Carolyn Road, Kenwood Hill, Louisville, Jefferson County, Kentucky, United States, 40214

Gross Living Area: 2701 sq. ft



Space	Area (sq. ft)	Calculation <small>Coordinate Polygon Area Algorithm using inches</small>
LOW CEILING (Non-living area)	47	$-((148.5 + 148.5) * (495.1 - 623.8) + (148.5 + 112.8) * (623.8 - 623.8) + (112.8 + 112.8) * (623.8 - 530) + (112.8 + 51.5) * (530 - 530) + (51.5 + 51.5) * (530 - 495.1) + (51.5 + 148.5) * (495.1 - 495.1)) * 0.5 * 0.00694$
LOW CEILING (Non-living area)	114	$-((500.6 + 500.6) * (495.1 - 530) + (500.6 + 467.3) * (530 - 530) + (467.3 + 467.3) * (530 - 552.5) + (467.3 + 390.3) * (552.5 - 552.5) + (390.3 + 390.3) * (552.5 - 530) + (390.3 + 208.9) * (530 - 530) + (208.9 + 208.9) * (530 - 623.8) + (208.9 + 174) * (623.8 - 623.8) + (174 + 174) * (623.8 -$

6812 Carolyn Road, Kenwood Hill, Louisville, Jefferson County, Kentucky, United States, 40214

Gross Living Area: 2701 sq. ft

Space	Area (sq. ft)	Calculation <small>Coordinate Polygon Area Algorithm using inches</small>
LOW CEILING (Non-living area)	189	$495.1 + (174 + 500.6) * (495.1 - 495.1) * 0.5 * 0.00694$ $-((401.6 + 401.6) * (225 - 387.9) + (401.6 + 500.6) * (387.9 - 387.9) + (500.6 + 500.6) * (387.9 - 423.1) + (500.6 + 366.7) * (423.1 - 423.1) + (366.7 + 366.7) * (423.1 - 260.4) + (366.7 + 169.5) * (260.4 - 260.4) + (169.5 + 169.5) * (260.4 - 423.1) + (169.5 + 51.5) * (423.1 - 423.1) + (51.5 + 51.5) * (423.1 - 387.9) + (51.5 + 134.6) * (387.9 - 387.9) + (134.6 + 134.6) * (387.9 - 225) + (134.6 + 401.6) * (225 - 225)) * 0.5 * 0.00694$
UNFINISHED ATTIC (Non-living area)	470	$-((366.7 + 366.7) * (260.4 - 423.1) + (366.7 + 500.6) * (423.1 - 423.1) + (500.6 + 500.6) * (423.1 - 495.1) + (500.6 + 174) * (495.1 - 495.1) + (174 + 174) * (495.1 - 623.8) + (174 + 148.5) * (623.8 - 623.8) + (148.5 + 148.5) * (623.8 - 495.1) + (148.5 + 51.5) * (495.1 - 495.1) + (51.5 + 51.5) * (495.1 - 423.1) + (51.5 + 169.5) * (423.1 - 423.1) + (169.5 + 169.5) * (423.1 - 260.4) + (169.5 + 366.7) * (260.4 - 260.4)) * 0.5 * 0.00694$