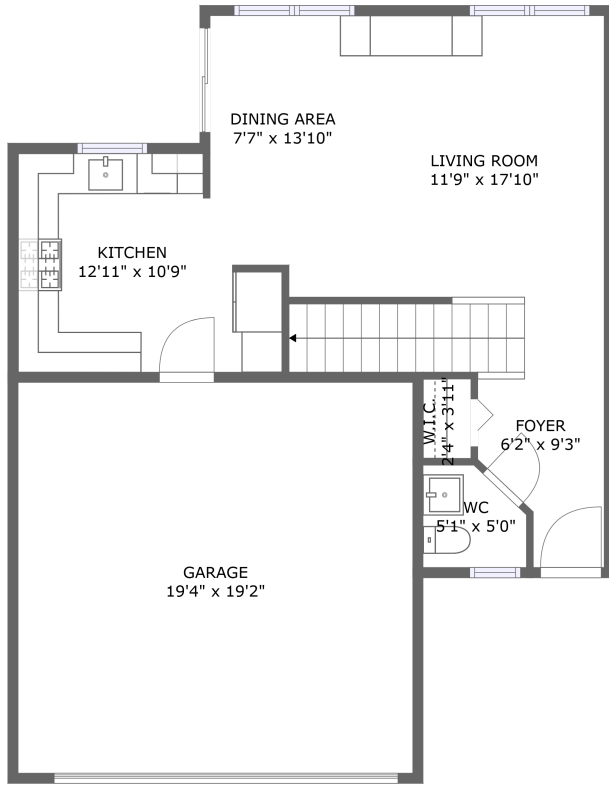
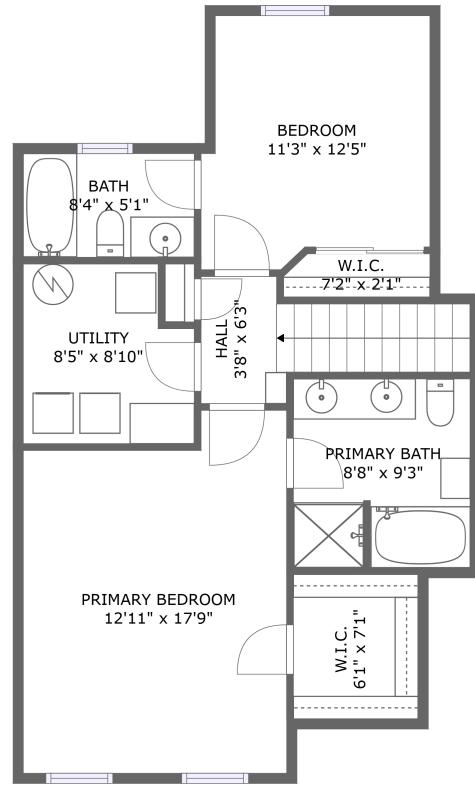


# 2317 Moonlight Court, Far Southeast, Aurora, Will County, Illinois, United States, 60503




FLOOR 1



FLOOR 2

## Property summary


 **1** Garages

 **2** Bedrooms

 **2** Bathrooms

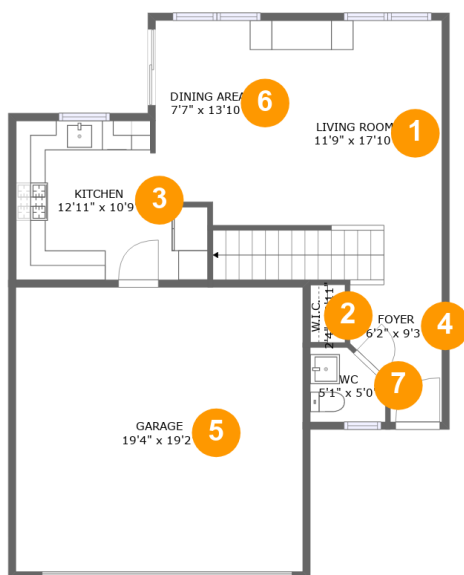
 **1** Half baths

 **2** Floors

 **1,232** Gross living area sqft

 **1,693** Total sqft

# 2317 Moonlight Court, Far Southeast, Aurora, Will County, Illinois, United States, 60503



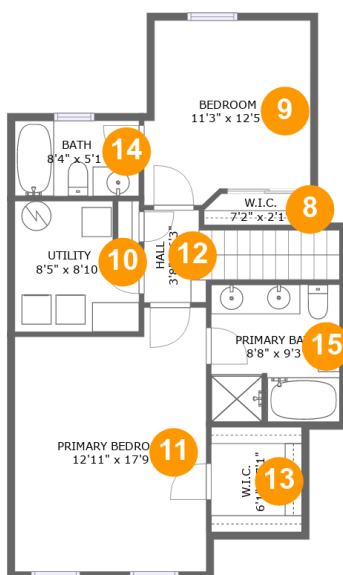
## Room dimensions

Floor 1

Total sqft: 962 Living area: 571

#		Dimensions	sqft	Counted as living area
1	Living Room	11'9" x 17'10"	219 sq. ft	Yes
2	Cl	2'4" x 3'11"	9 sq. ft	Yes
3	Kitchen	12'11" x 10'9"	118 sq. ft	Yes
4	Entry	6'2" x 9'3"	46 sq. ft	Yes
5	Garage	19'4" x 19'2"	371 sq. ft	No
6	Dining Room	7'7" x 13'10"	98 sq. ft	Yes
7	Bath	5'1" x 5'0"	22 sq. ft	Yes

# 2317 Moonlight Court, Far Southeast, Aurora, Will County, Illinois, United States, 60503



## Room dimensions

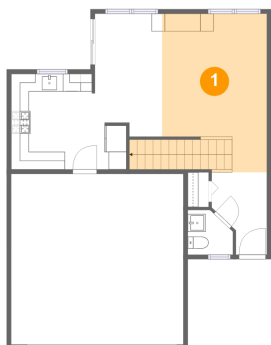
Floor 2

Total sqft: 731 Living area: 661

#		Dimensions	sqft	Counted as living area
8	Cl	7'2" x 2'1"	15 sq. ft	Yes
9	Bedroom	11'3" x 12'5"	128 sq. ft	Yes
10	Utility	8'5" x 8'10"	68 sq. ft	No
11	Bedroom	12'11" x 17'9"	213 sq. ft	Yes
12	Hall	3'8" x 6'3"	55 sq. ft	Yes
13	Cl	6'1" x 7'1"	43 sq. ft	Yes
14	Bath	8'4" x 5'1"	43 sq. ft	Yes
15	Bath	8'8" x 9'3"	79 sq. ft	Yes

# 2317 Moonlight Court, Far Southeast, Aurora, Will County, Illinois, United States, 60503

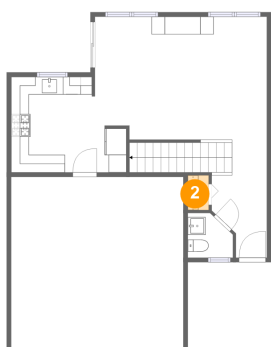
## 1 Floor 1 - Living Room



Dimensions: 11'9" x 17'10"  
Area: 219 sq. ft  
Counted as living area: Yes

Heated: Yes  
Finished: Yes  
Enclosed: Yes  
Contiguous: Yes  
Permitted: Yes  
Wet space: No  
Addition: No  
Conversion: No

## 2 Floor 1 - Cl

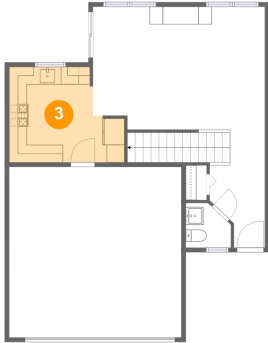


Dimensions: 2'4" x 3'11"  
Area: 9 sq. ft  
Counted as living area: Yes

Heated: Yes  
Finished: Yes  
Enclosed: Yes  
Contiguous: Yes  
Permitted: Yes  
Wet space: No  
Addition: No  
Conversion: No

# 2317 Moonlight Court, Far Southeast, Aurora, Will County, Illinois, United States, 60503

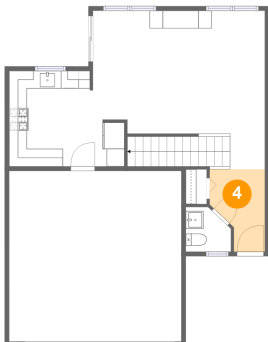
## 3 Floor 1 - Kitchen



Dimensions: 12'11" x 10'9"  
Area: 118 sq. ft  
Counted as living area: Yes

Heated: Yes  
Finished: Yes  
Enclosed: Yes  
Contiguous: Yes  
Permitted: Yes  
Wet space: No  
Addition: No  
Conversion: No

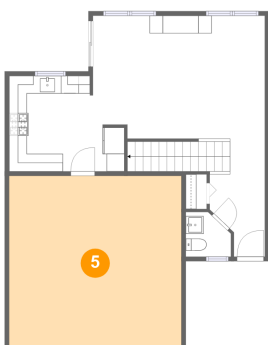
## 4 Floor 1 - Entry



Dimensions: 6'2" x 9'3"  
Area: 46 sq. ft  
Counted as living area: Yes

Heated: Yes  
Finished: Yes  
Enclosed: Yes  
Contiguous: Yes  
Permitted: Yes  
Wet space: No  
Addition: No  
Conversion: No

## 5 Floor 1 - Garage

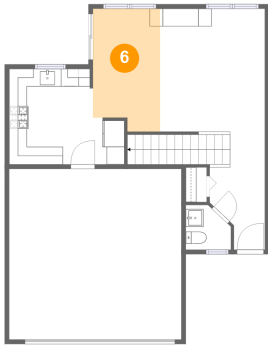


Dimensions: 19'4" x 19'2"  
Area: 371 sq. ft  
Counted as living area: No

Heated: No  
Finished: No  
Enclosed: Yes  
Contiguous: Yes  
Permitted: Yes  
Wet space: No  
Addition: No  
Conversion: No

# 2317 Moonlight Court, Far Southeast, Aurora, Will County, Illinois, United States, 60503

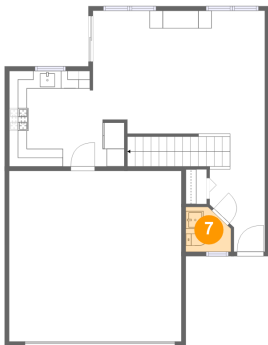
## 6 Floor 1 - Dining Room



Dimensions: 7'7" x 13'10"  
Area: 98 sq. ft  
Counted as living area: Yes

Heated: Yes  
Finished: Yes  
Enclosed: Yes  
Contiguous: Yes  
Permitted: Yes  
Wet space: No  
Addition: No  
Conversion: No

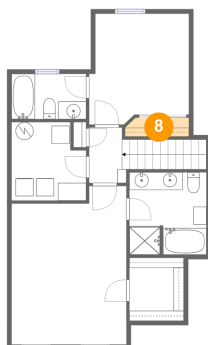
## 7 Floor 1 - Bath



Dimensions: 5'1" x 5'0"  
Area: 22 sq. ft  
Counted as living area: Yes

Heated: Yes  
Finished: Yes  
Enclosed: Yes  
Contiguous: Yes  
Permitted: Yes  
Wet space: Yes  
Addition: No  
Conversion: No

## 8 Floor 2 - Cl

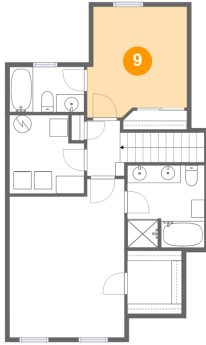


Dimensions: 7'2" x 2'1"  
Area: 15 sq. ft  
Counted as living area: Yes

Heated: Yes  
Finished: Yes  
Enclosed: Yes  
Contiguous: Yes  
Permitted: Yes  
Wet space: No  
Addition: No  
Conversion: No

# 2317 Moonlight Court, Far Southeast, Aurora, Will County, Illinois, United States, 60503

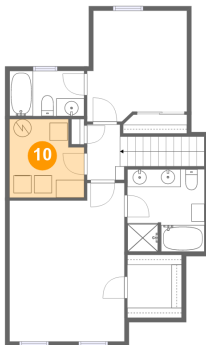
## 9 Floor 2 - Bedroom



Dimensions: 11'3" x 12'5"  
Area: 128 sq. ft  
Counted as living area: Yes

Heated: Yes  
Finished: Yes  
Enclosed: Yes  
Contiguous: Yes  
Permitted: Yes  
Wet space: No  
Addition: No  
Conversion: No

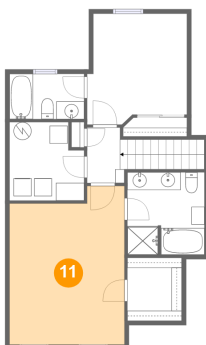
## 10 Floor 2 - Utility



Dimensions: 8'5" x 8'10"  
Area: 68 sq. ft  
Counted as living area: No

Heated: Yes  
Finished: No  
Enclosed: Yes  
Contiguous: Yes  
Permitted: Yes  
Wet space: No  
Addition: No  
Conversion: No

## 11 Floor 2 - Bedroom

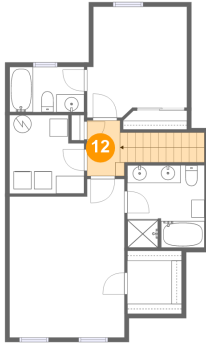


Dimensions: 12'11" x 17'9"  
Area: 213 sq. ft  
Counted as living area: Yes

Heated: Yes  
Finished: Yes  
Enclosed: Yes  
Contiguous: Yes  
Permitted: Yes  
Wet space: No  
Addition: No  
Conversion: No

# 2317 Moonlight Court, Far Southeast, Aurora, Will County, Illinois, United States, 60503

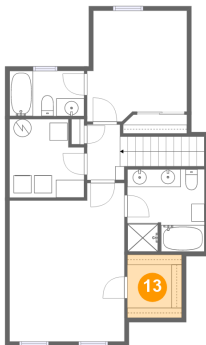
## 12 Floor 2 - Hall



Dimensions: 3'8" x 6'3"  
Area: 55 sq. ft  
Counted as living area: Yes

Heated: Yes  
Finished: Yes  
Enclosed: Yes  
Contiguous: Yes  
Permitted: Yes  
Wet space: No  
Addition: No  
Conversion: No

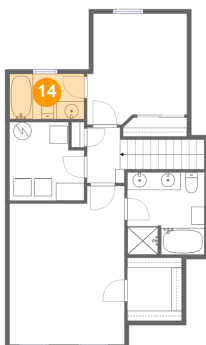
## 13 Floor 2 - Cl



Dimensions: 6'1" x 7'1"  
Area: 43 sq. ft  
Counted as living area: Yes

Heated: Yes  
Finished: Yes  
Enclosed: Yes  
Contiguous: Yes  
Permitted: Yes  
Wet space: No  
Addition: No  
Conversion: No

## 14 Floor 2 - Bath



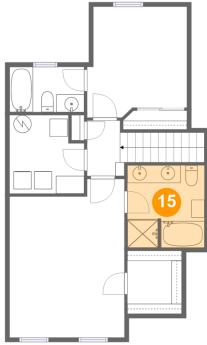
Dimensions: 8'4" x 5'1"  
Area: 43 sq. ft  
Counted as living area: Yes

Heated: Yes  
Finished: Yes  
Enclosed: Yes  
Contiguous: Yes  
Permitted: Yes  
Wet space: Yes  
Addition: No  
Conversion: No



# 2317 Moonlight Court, Far Southeast, Aurora, Will County, Illinois, United States, 60503

## 15 Floor 2 - Bath



Dimensions: 8'8" x 9'3"  
Area: 79 sq. ft  
Counted as living area: Yes

Heated: Yes  
Finished: Yes  
Enclosed: Yes  
Contiguous: Yes  
Permitted: Yes  
Wet space: Yes  
Addition: No  
Conversion: No