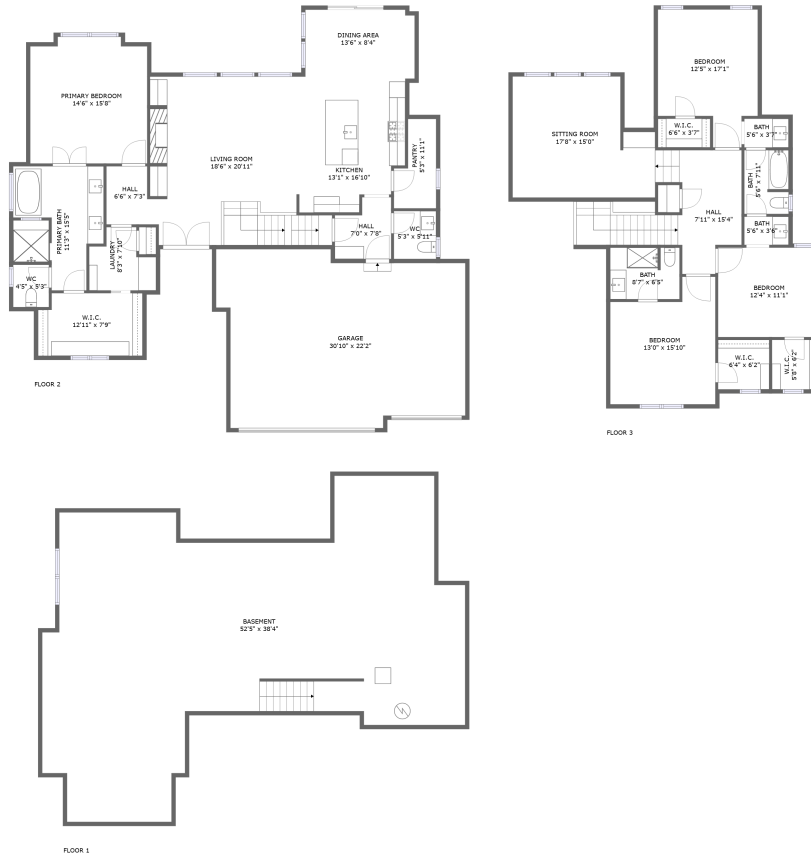


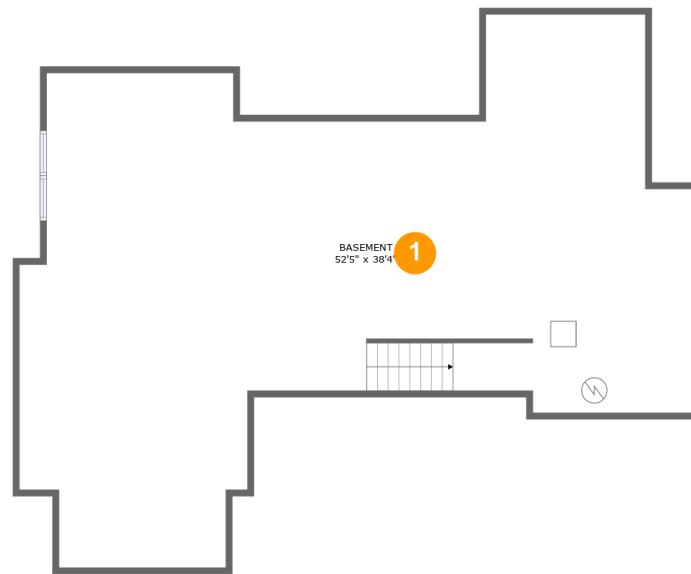
9837 Northeast 104th Terrace, Kansas City, Clay County, Missouri, United States, 64157



Property Summary

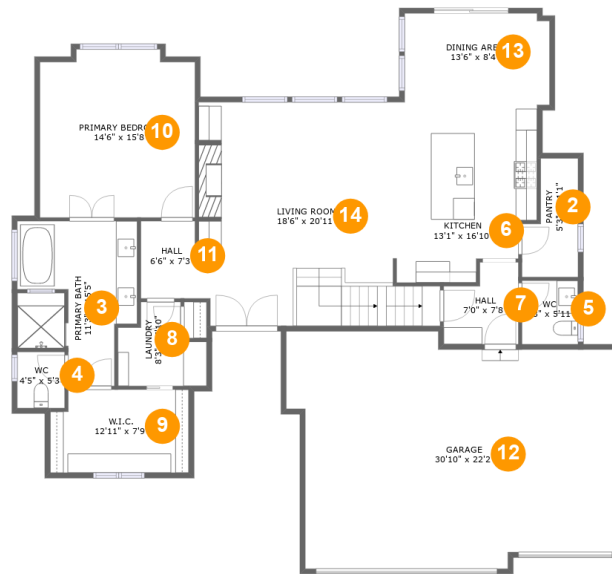
1 garages **4** bedrooms **3** bathrooms **1** half baths

3 floors **2,857** Gross Living Area sqft **5,055** total sqft

**9837 Northeast 104th Terrace, Kansas City, Clay
County, Missouri, United States, 64157****Room Dimensions****Floor 1****Total sqft: 1545****Living area: 0**

#	Room name	Dimensions	Area (sqft)	Counted as Living Area
1	Basement	52'5" x 38'4"	1443 sq. ft	No

9837 Northeast 104th Terrace, Kansas City, Clay County, Missouri, United States, 64157



Room Dimensions

Floor 2

Total sqft: 2215

Living area: 1562

#	Room name	Dimensions	Area (sqft)	Counted as Living Area
2	Pantry	5'3" x 11'1"	47 sq. ft	Yes
3	Primary Bath	11'3" x 15'5"	141 sq. ft	Yes
4	Wc	4'5" x 5'3"	23 sq. ft	Yes
5	Wc	5'3" x 5'11"	31 sq. ft	Yes
6	Kitchen	13'1" x 16'10"	202 sq. ft	Yes
7	Hall	7'0" x 7'8"	46 sq. ft	Yes
8	Laundry	8'3" x 7'10"	51 sq. ft	Yes
9	W.i.c.	12'11" x 7'9"	97 sq. ft	Yes
10	Primary Bedroom	14'6" x 15'8"	220 sq. ft	Yes
11	Hall	6'6" x 7'3"	41 sq. ft	Yes
12	Garage	30'10" x 22'2"	614 sq. ft	No

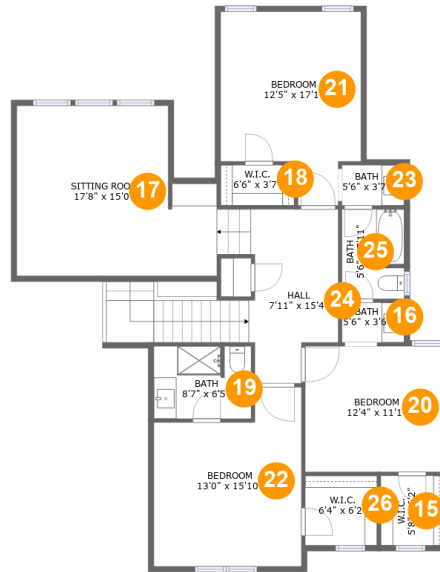
Scan captured on Tue, 18 Jun 2024 18:31:03 GMT

Information is calculated by CubiCasa technology; deemed highly reliable but not guaranteed.

**9837 Northeast 104th Terrace, Kansas City, Clay
County, Missouri, United States, 64157**

#	Room name	Dimensions	Area (sqft)	Counted as Living Area
13	Dining Area	13'6" x 8'4"	112 sq. ft	Yes
14	Living Room	18'6" x 20'11"	392 sq. ft	Yes

9837 Northeast 104th Terrace, Kansas City, Clay County, Missouri, United States, 64157



Room Dimensions

Floor 3

Total sqft: 1295

Living area: 1295

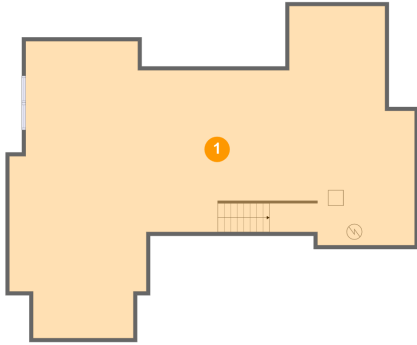
#	Room name	Dimensions	Area (sqft)	Counted as Living Area
15	W.i.c.	5'8" x 6'2"	35 sq. ft	Yes
16	Bath	5'6" x 3'6"	19 sq. ft	Yes
17	Sitting Room	17'8" x 15'0"	235 sq. ft	Yes
18	W.i.c.	6'6" x 3'7"	23 sq. ft	Yes
19	Bath	8'7" x 6'5"	54 sq. ft	Yes
20	Bedroom	12'4" x 11'1"	137 sq. ft	Yes
21	Bedroom	12'5" x 17'1"	177 sq. ft	Yes
22	Bedroom	13'0" x 15'10"	178 sq. ft	Yes
23	Bath	5'6" x 3'7"	20 sq. ft	Yes
24	Hall	7'11" x 15'4"	181 sq. ft	Yes
25	Bath	5'6" x 7'11"	43 sq. ft	Yes

**9837 Northeast 104th Terrace, Kansas City, Clay
County, Missouri, United States, 64157**

#	Room name	Dimensions	Area (sqft)	Counted as Living Area
26	W.i.c.	6'4" x 6'2"	39 sq. ft	Yes

9837 Northeast 104th Terrace, Kansas City, Clay County, Missouri, United States, 64157

1 Floor 1 - Basement



Dimensions: 52'5" x 38'4"
Area: 1443 sq. ft
Counted as Living Area: No

Heated: No
Finished: No
Enclosed: Yes
Contiguous: Yes
Permitted: Yes
Wet Space: No
Addition: No
Conversion: No

2 Floor 2 - Pantry



Dimensions: 5'3" x 11'1"
Area: 47 sq. ft
Counted as Living Area: Yes

Heated: Yes
Finished: Yes
Enclosed: Yes
Contiguous: Yes
Permitted: Yes
Wet Space: No
Addition: No
Conversion: No

9837 Northeast 104th Terrace, Kansas City, Clay County, Missouri, United States, 64157

3 Floor 2 - Primary Bath



Dimensions: 11'3" x 15'5"
Area: 141 sq. ft
Counted as Living Area:
Yes

Heated: Yes
Finished: Yes
Enclosed: Yes
Contiguous:
Yes
Permitted: Yes
Wet Space: Yes
Addition: No
Conversion: No

4 Floor 2 - Wc



Dimensions: 4'5" x 5'3"
Area: 23 sq. ft
Counted as Living Area:
Yes

Heated: Yes
Finished: Yes
Enclosed: Yes
Contiguous:
Yes
Permitted: Yes
Wet Space: Yes
Addition: No
Conversion: No

5 Floor 2 - Wc

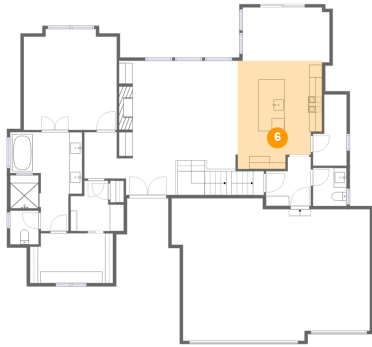


Dimensions: 5'3" x 5'11"
Area: 31 sq. ft
Counted as Living Area:
Yes

Heated: Yes
Finished: Yes
Enclosed: Yes
Contiguous:
Yes
Permitted: Yes
Wet Space: Yes
Addition: No
Conversion: No

9837 Northeast 104th Terrace, Kansas City, Clay County, Missouri, United States, 64157

6 Floor 2 - Kitchen



Dimensions: 13'1" x 16'10"
Area: 202 sq. ft
Counted as Living Area:
Yes

Heated: Yes
Finished: Yes
Enclosed: Yes
Contiguous:
Yes
Permitted: Yes
Wet Space: No
Addition: No
Conversion: No

7 Floor 2 - Hall



Dimensions: 7'0" x 7'8"
Area: 46 sq. ft
Counted as Living Area:
Yes

Heated: Yes
Finished: Yes
Enclosed: Yes
Contiguous:
Yes
Permitted: Yes
Wet Space: No
Addition: No
Conversion: No

8 Floor 2 - Laundry

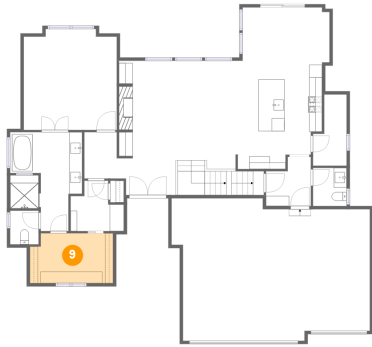


Dimensions: 8'3" x 7'10"
Area: 51 sq. ft
Counted as Living Area:
Yes

Heated: Yes
Finished: Yes
Enclosed: Yes
Contiguous:
Yes
Permitted: Yes
Wet Space: No
Addition: No
Conversion: No

9837 Northeast 104th Terrace, Kansas City, Clay County, Missouri, United States, 64157

9 Floor 2 - W.i.c.



Dimensions: 12'11" x 7'9"
Area: 97 sq. ft
Counted as Living Area:
Yes

Heated: Yes
Finished: Yes
Enclosed: Yes
Contiguous:
Yes
Permitted: Yes
Wet Space: No
Addition: No
Conversion: No

10 Floor 2 - Primary Bedroom



Dimensions: 14'6" x 15'8"
Area: 220 sq. ft
Counted as Living Area:
Yes

Heated: Yes
Finished: Yes
Enclosed: Yes
Contiguous:
Yes
Permitted: Yes
Wet Space: No
Addition: No
Conversion: No

11 Floor 2 - Hall



Dimensions: 6'6" x 7'3"
Area: 41 sq. ft
Counted as Living Area:
Yes

Heated: Yes
Finished: Yes
Enclosed: Yes
Contiguous:
Yes
Permitted: Yes
Wet Space: No
Addition: No
Conversion: No

9837 Northeast 104th Terrace, Kansas City, Clay County, Missouri, United States, 64157

12 Floor 2 - Garage



Dimensions: 30'10" x 22'2"
Area: 614 sq. ft
Counted as Living Area: No

Heated: No
Finished: No
Enclosed: Yes
Contiguous: Yes
Permitted: Yes
Wet Space: No
Addition: No
Conversion: No

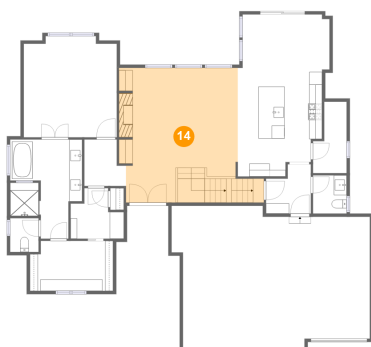
13 Floor 2 - Dining Area



Dimensions: 13'6" x 8'4"
Area: 112 sq. ft
Counted as Living Area: Yes

Heated: Yes
Finished: Yes
Enclosed: Yes
Contiguous: Yes
Permitted: Yes
Wet Space: No
Addition: No
Conversion: No

14 Floor 2 - Living Room

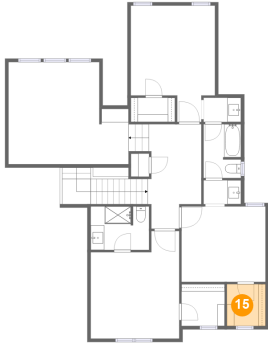


Dimensions: 18'6" x 20'11"
Area: 392 sq. ft
Counted as Living Area: Yes

Heated: Yes
Finished: Yes
Enclosed: Yes
Contiguous: Yes
Permitted: Yes
Wet Space: No
Addition: No
Conversion: No

9837 Northeast 104th Terrace, Kansas City, Clay County, Missouri, United States, 64157

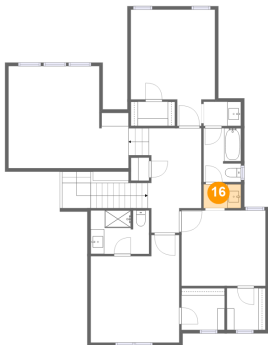
15 Floor 3 - W.i.c.



Dimensions: 5'8" x 6'2"
Area: 35 sq. ft
Counted as Living Area:
Yes

Heated: Yes
Finished: Yes
Enclosed: Yes
Contiguous:
Yes
Permitted: Yes
Wet Space: No
Addition: No
Conversion: No

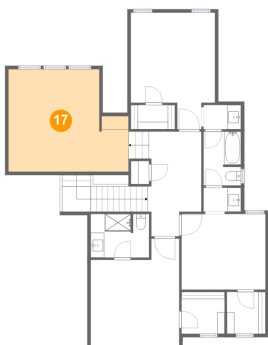
16 Floor 3 - Bath



Dimensions: 5'6" x 3'6"
Area: 19 sq. ft
Counted as Living Area:
Yes

Heated: Yes
Finished: Yes
Enclosed: Yes
Contiguous:
Yes
Permitted: Yes
Wet Space: Yes
Addition: No
Conversion: No

17 Floor 3 - Sitting Room

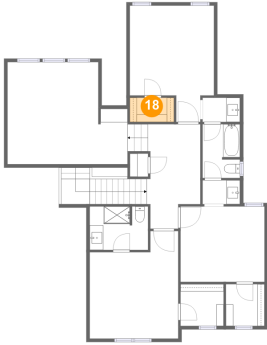


Dimensions: 17'8" x 15'0"
Area: 235 sq. ft
Counted as Living Area:
Yes

Heated: Yes
Finished: Yes
Enclosed: Yes
Contiguous:
Yes
Permitted: Yes
Wet Space: No
Addition: No
Conversion: No

9837 Northeast 104th Terrace, Kansas City, Clay County, Missouri, United States, 64157

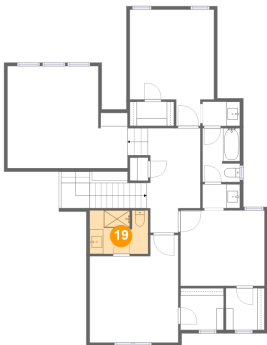
18 Floor 3 - W.i.c.



Dimensions: 6'6" x 3'7"
Area: 23 sq. ft
Counted as Living Area:
Yes

Heated: Yes
Finished: Yes
Enclosed: Yes
Contiguous:
Yes
Permitted: Yes
Wet Space: No
Addition: No
Conversion: No

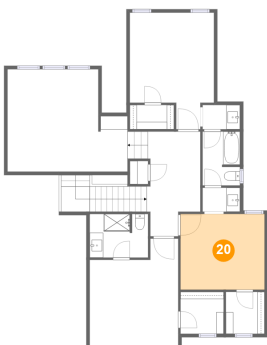
19 Floor 3 - Bath



Dimensions: 8'7" x 6'5"
Area: 54 sq. ft
Counted as Living Area:
Yes

Heated: Yes
Finished: Yes
Enclosed: Yes
Contiguous:
Yes
Permitted: Yes
Wet Space: Yes
Addition: No
Conversion: No

20 Floor 3 - Bedroom

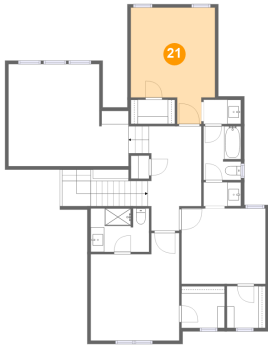


Dimensions: 12'4" x 11'1"
Area: 137 sq. ft
Counted as Living Area:
Yes

Heated: Yes
Finished: Yes
Enclosed: Yes
Contiguous:
Yes
Permitted: Yes
Wet Space: No
Addition: No
Conversion: No

9837 Northeast 104th Terrace, Kansas City, Clay County, Missouri, United States, 64157

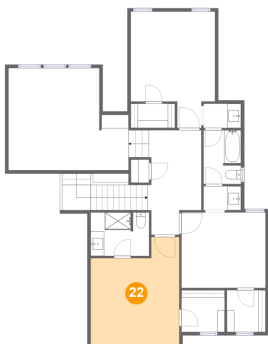
21 Floor 3 - Bedroom



Dimensions: 12'5" x 17'1"
Area: 177 sq. ft
Counted as Living Area:
Yes

Heated: Yes
Finished: Yes
Enclosed: Yes
Contiguous:
Yes
Permitted: Yes
Wet Space: No
Addition: No
Conversion: No

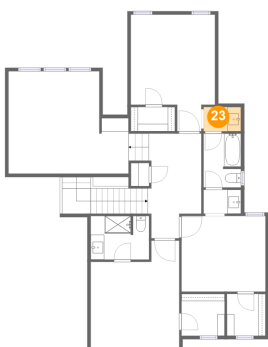
22 Floor 3 - Bedroom



Dimensions: 13'0" x 15'10"
Area: 178 sq. ft
Counted as Living Area:
Yes

Heated: Yes
Finished: Yes
Enclosed: Yes
Contiguous:
Yes
Permitted: Yes
Wet Space: No
Addition: No
Conversion: No

23 Floor 3 - Bath

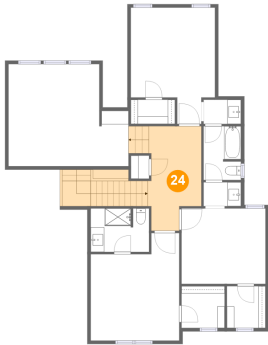


Dimensions: 5'6" x 3'7"
Area: 20 sq. ft
Counted as Living Area:
Yes

Heated: Yes
Finished: Yes
Enclosed: Yes
Contiguous:
Yes
Permitted: Yes
Wet Space: Yes
Addition: No
Conversion: No

9837 Northeast 104th Terrace, Kansas City, Clay County, Missouri, United States, 64157

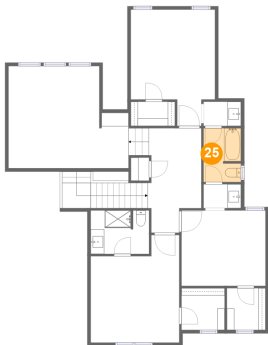
24 Floor 3 - Hall



Dimensions: 7'11" x 15'4"
Area: 181 sq. ft
Counted as Living Area:
Yes

Heated: Yes
Finished: Yes
Enclosed: Yes
Contiguous:
Yes
Permitted: Yes
Wet Space: No
Addition: No
Conversion: No

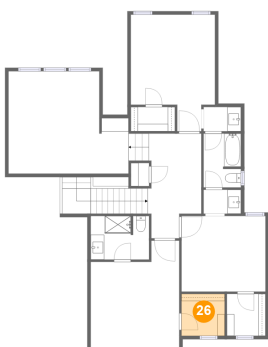
25 Floor 3 - Bath



Dimensions: 5'6" x 7'11"
Area: 43 sq. ft
Counted as Living Area:
Yes

Heated: Yes
Finished: Yes
Enclosed: Yes
Contiguous:
Yes
Permitted: Yes
Wet Space: Yes
Addition: No
Conversion: No

26 Floor 3 - W.i.c.



Dimensions: 6'4" x 6'2"
Area: 39 sq. ft
Counted as Living Area:
Yes

Heated: Yes
Finished: Yes
Enclosed: Yes
Contiguous:
Yes
Permitted: Yes
Wet Space: No
Addition: No
Conversion: No