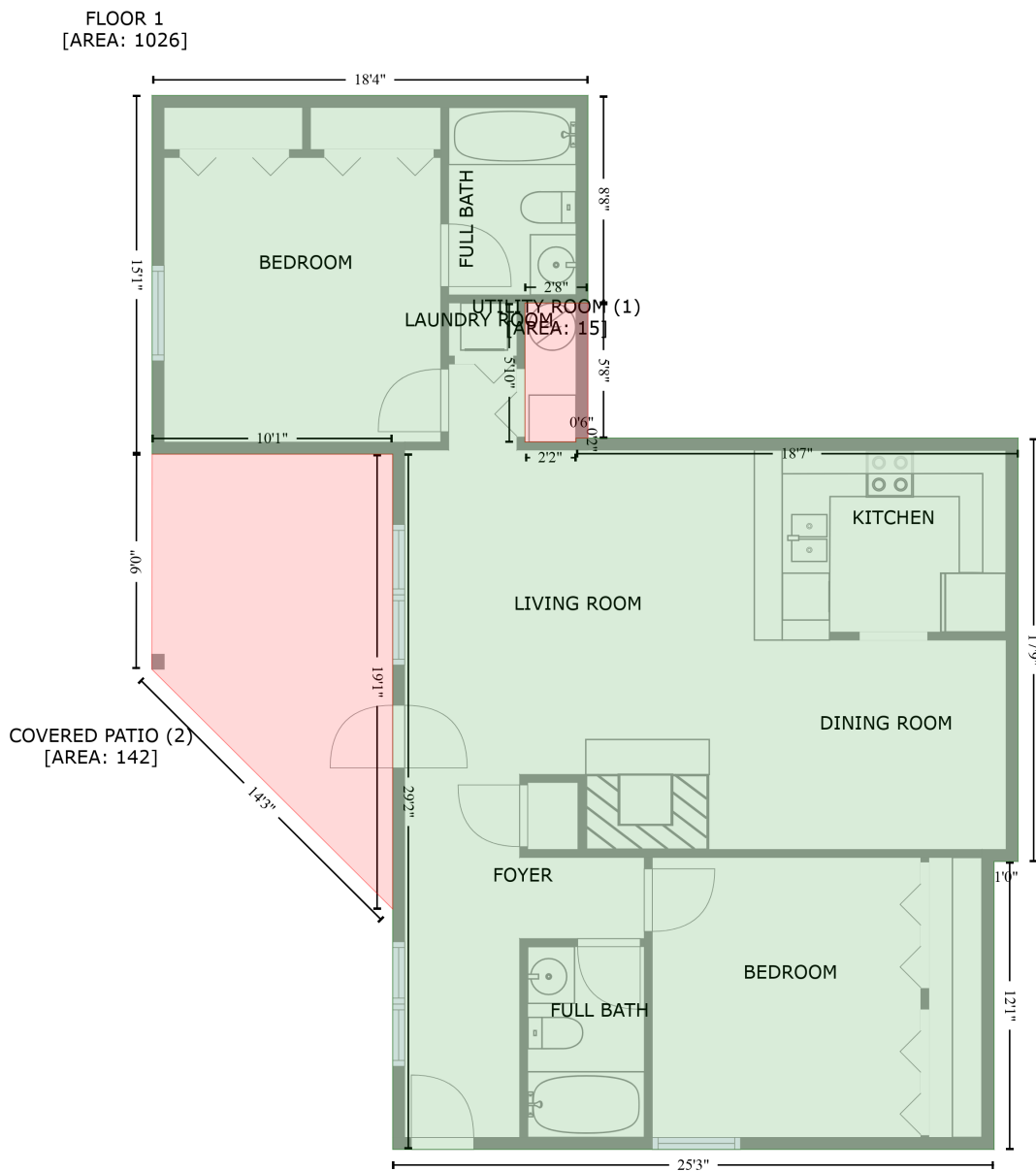


# 44 Lake Avenue, Clifton Heights, Louisville, Jefferson County, Kentucky, United States, 40206

Gross Living Area: 1026 sq. ft



Space	Area (sq. ft)	Calculation <small>Coordinate Polygon Area Algorithm using inches</small>
FLOOR 1 (Living area)	1026	$-((76.3 + 295.9) * (-4.4 - -4.4) + (295.9 + 295.9) * (-4.4 - 100) + (295.9 + 264.2) * (100 - 100) + (264.2 + 264.2) * (100 - 170) + (264.2 + 289.9) * (170 - 170) + (289.9 + 289.9) * (170 - 168) + (289.9 + 512.7) * (168 - 168) + (512.7 + 512.7) * (168 - 381.1) + (512.7 + 500.6) * (381.1 - 381.1) + (500.6 + 500.6) * (381.1 - 526.1) + (500.6 + 197.5) * (526.1 - 526.1) + (197.5 + 197.5) * (526.1 - 176.1) + (197.5 + 76.3) * (176.1 - 176.1) + (76.3 + 76.3) * (176.1 - -4.4)) * 0.5 * 0.00694$
UTILITY ROOM	15	$-((295.9 + 295.9) * (100 - 168) + (295.9 + 289.9) * (168 - 168) + (289.9 + 289.9) * (168 - 170) +$

# 44 Lake Avenue, Clifton Heights, Louisville, Jefferson County, Kentucky, United States, 40206

Gross Living Area: 1026 sq. ft

Space	Area (sq. ft)	Calculation <small>Coordinate Polygon Area Algorithm using inches</small>
(Non-living area)		$(289.9 + 264.2) * (170 - 170) + (264.2 + 264.2) * (170 - 100) + (264.2 + 295.9) * (100 - 100) * 0.5 * 0.00694$
COVERED PATIO (Non-living area)	142	$-((197.5 + 197.5) * (176.1 - 405.1) + (197.5 + 76.1) * (405.1 - 284.4) + (76.1 + 76.3) * (284.4 - 176.1) + (76.3 + 197.5) * (176.1 - 176.1)) * 0.5 * 0.00694$