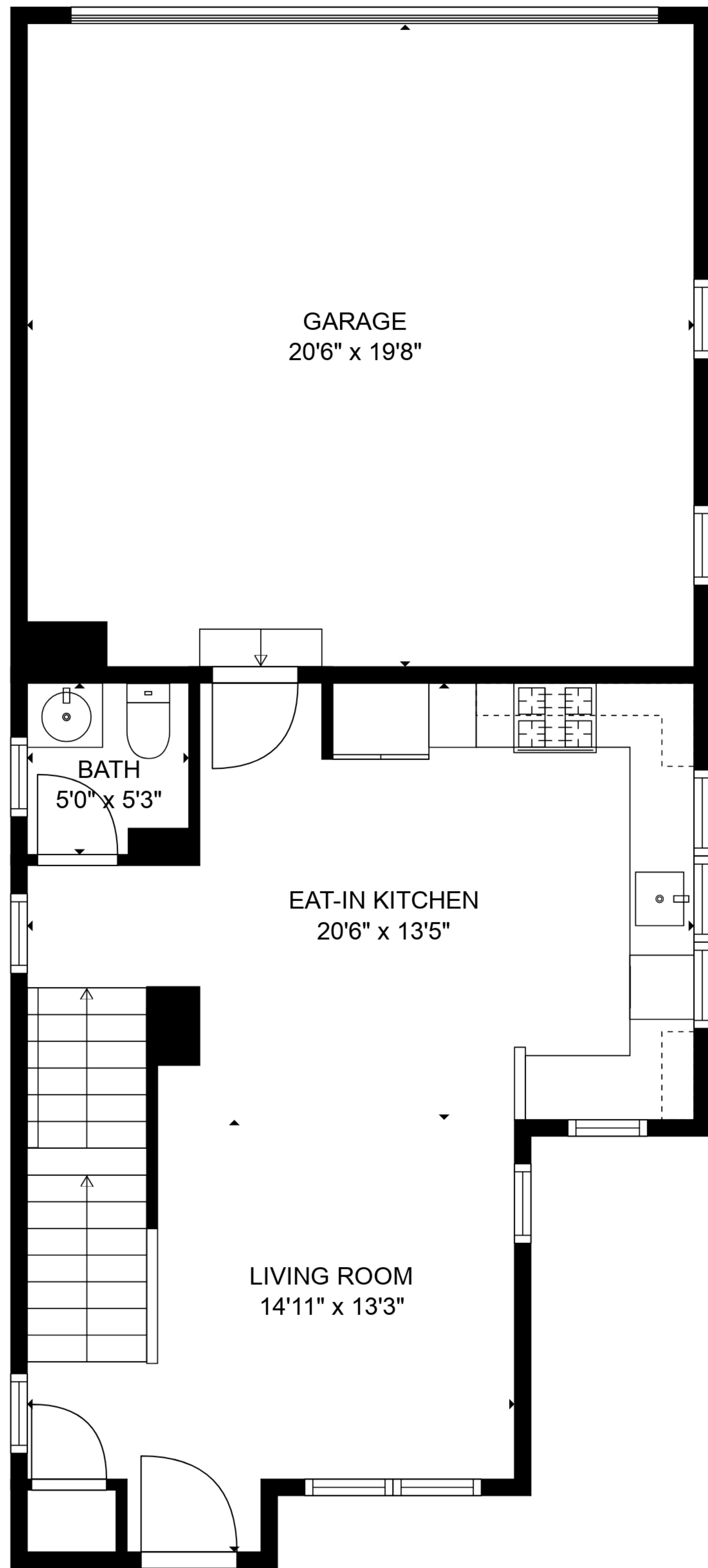


**BASEMENT**  
18'11" x 22'5"

**HALL**  
4'8" x 5'4"

**TOTAL: 1290 sq. ft**  
BELOW GROUND: 77 sq. ft, FLOOR 2: 456 sq. ft, FLOOR 3: 757 sq. ft  
EXCLUDED AREAS: BASEMENT: 305 sq. ft, GARAGE: 404 sq. ft

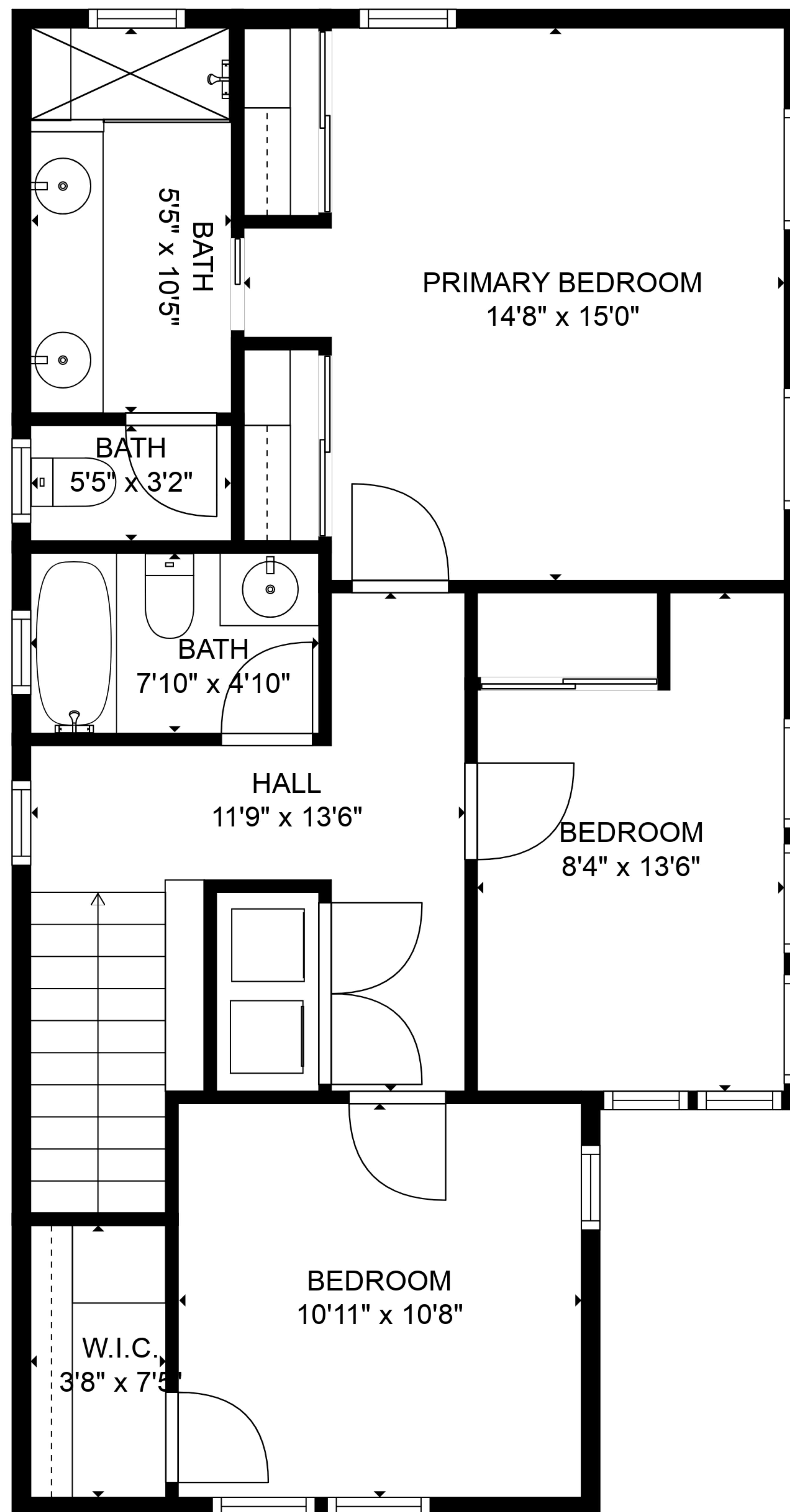
SIZES AND DIMENSIONS ARE APPROXIMATE, ACTUAL MAY VARY.



**TOTAL: 1290 sq. ft**

BELOW GROUND: 77 sq. ft, FLOOR 2: 456 sq. ft, FLOOR 3: 757 sq. ft  
EXCLUDED AREAS: BASEMENT: 305 sq. ft, GARAGE: 404 sq. ft

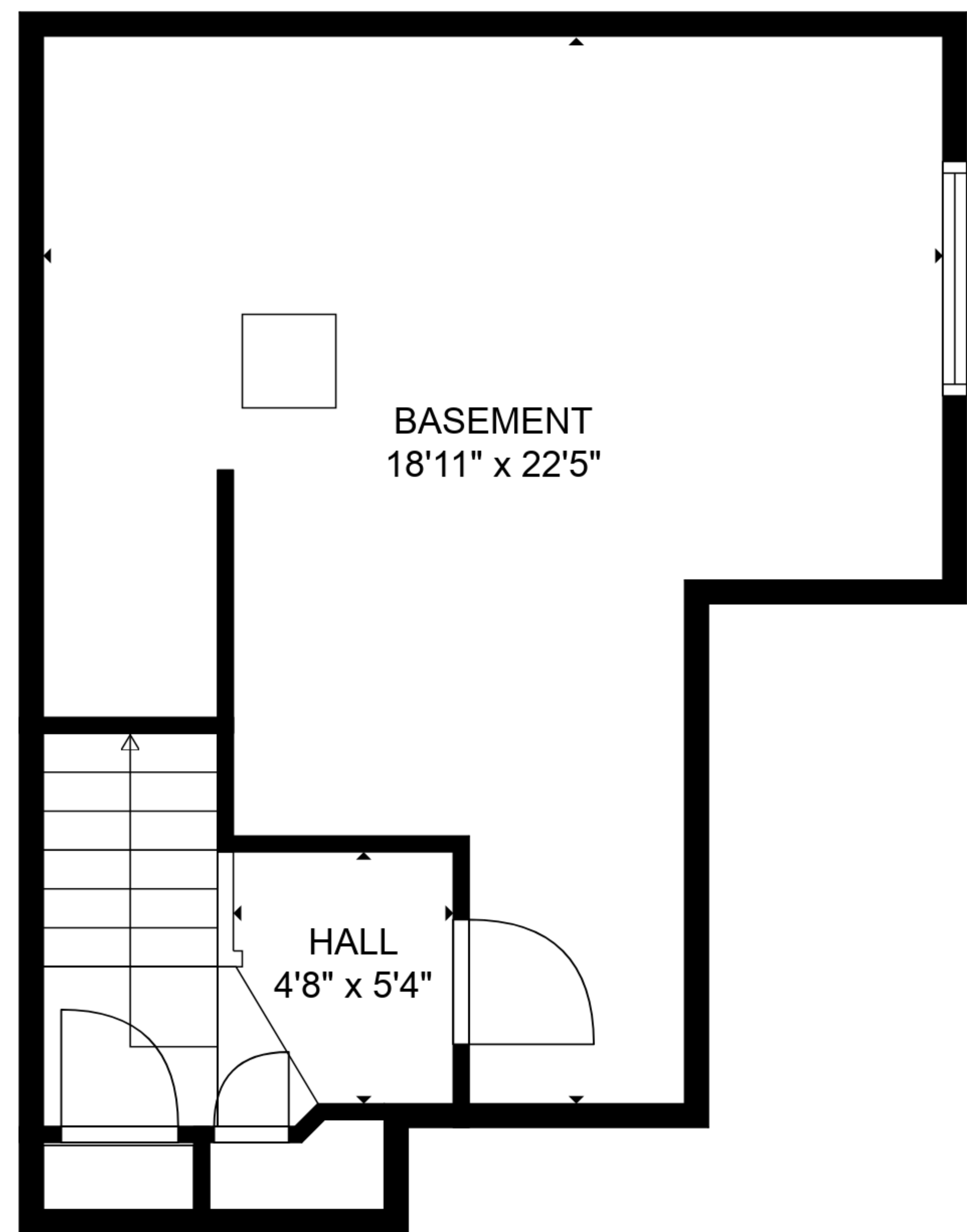
SIZES AND DIMENSIONS ARE APPROXIMATE, ACTUAL MAY VARY.



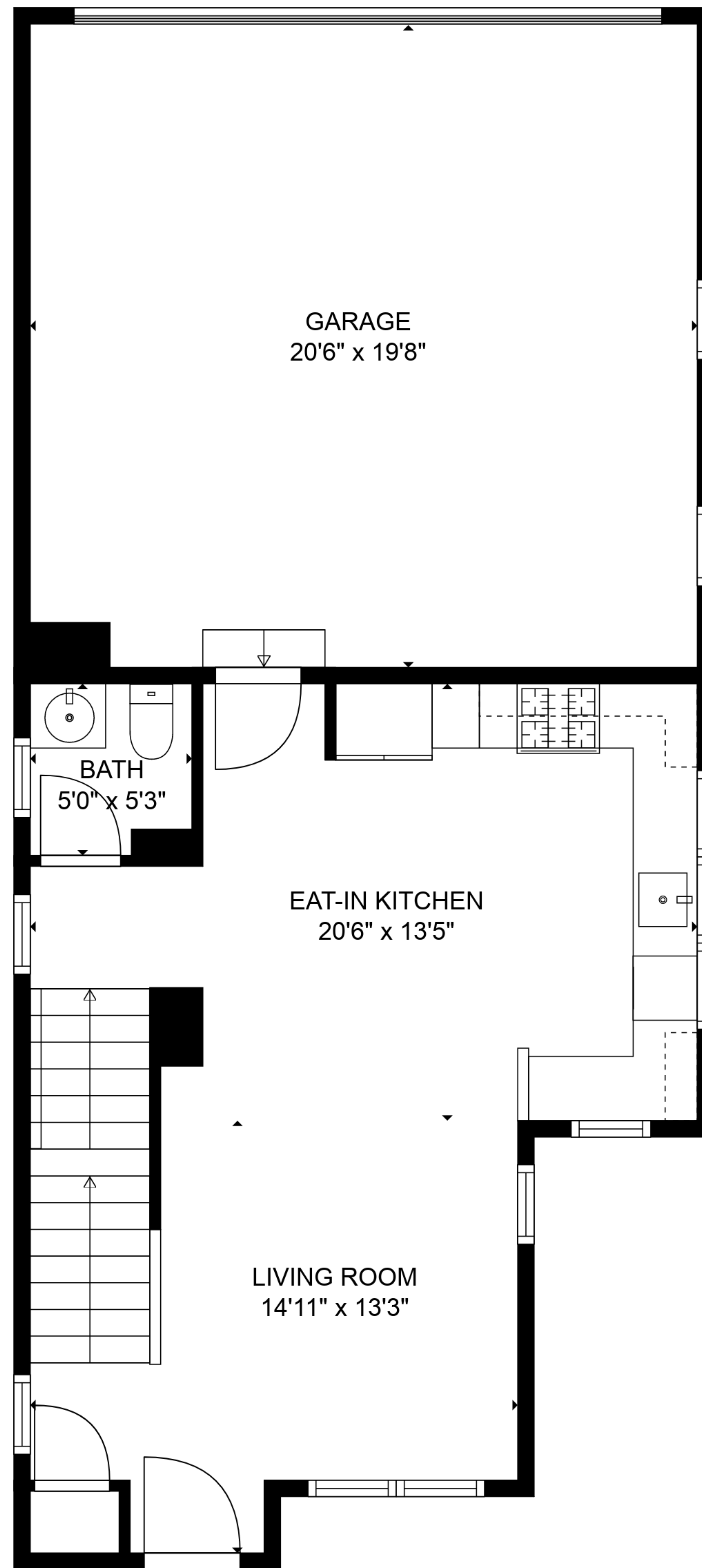
**TOTAL: 1290 sq. ft**

BELOW GROUND: 77 sq. ft, FLOOR 2: 456 sq. ft, FLOOR 3: 757 sq. ft  
 EXCLUDED AREAS: BASEMENT: 305 sq. ft, GARAGE: 404 sq. ft

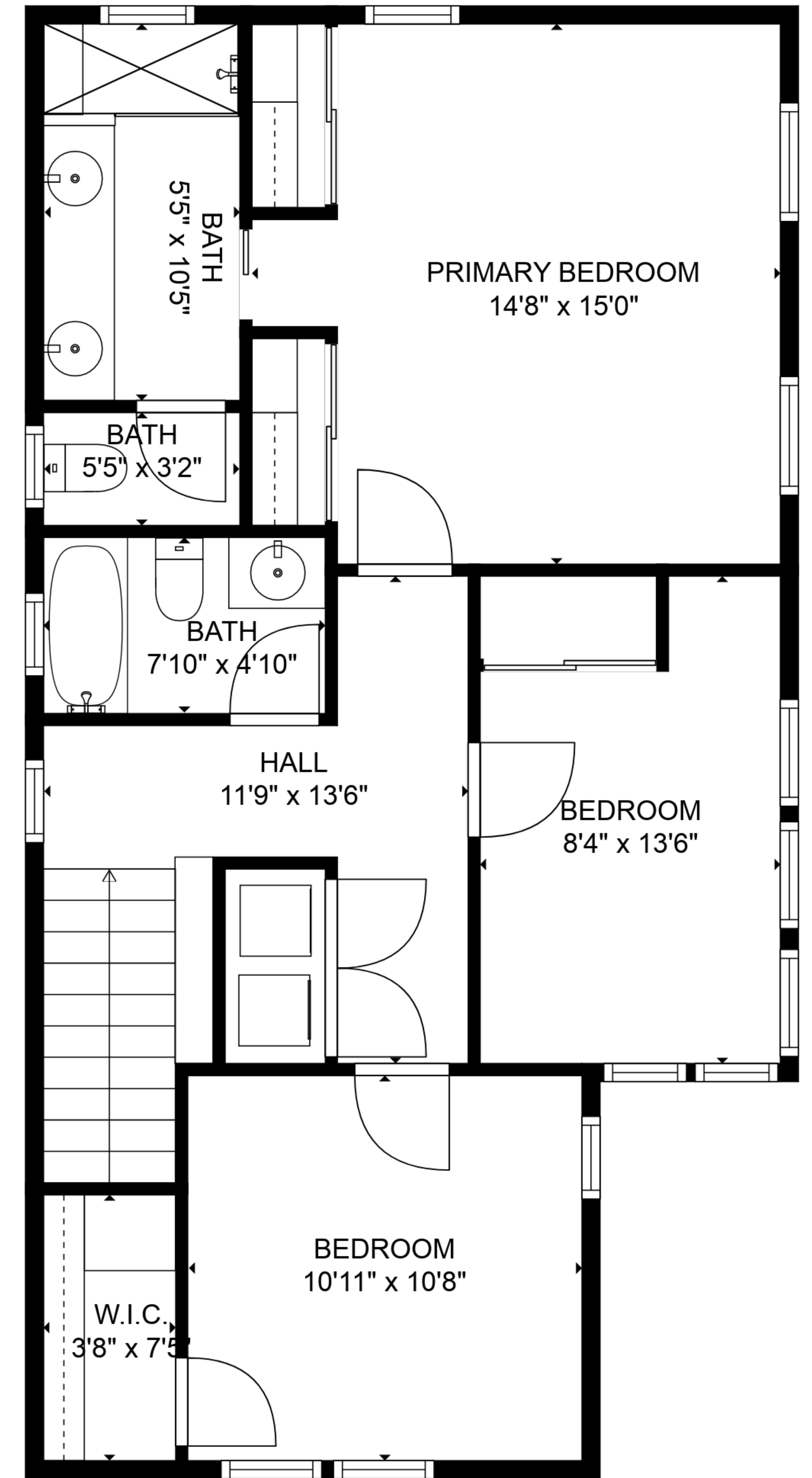
SIZES AND DIMENSIONS ARE APPROXIMATE, ACTUAL MAY VARY.



FLOOR 1



FLOOR 2



FLOOR 3

**TOTAL: 1290 sq. ft**  
 BELOW GROUND: 77 sq. ft, FLOOR 2: 456 sq. ft, FLOOR 3: 757 sq. ft  
 EXCLUDED AREAS: BASEMENT: 305 sq. ft, GARAGE: 404 sq. ft

SIZES AND DIMENSIONS ARE APPROXIMATE, ACTUAL MAY VARY.