

Home report

71 Windtree Drive, Westlake Corner, Moneta, Franklin County,
Virginia, United States, 24121




Total Area: 2375 sq. ft


Floor 1: 2375 sq. ft

Excluded: Garage 489 sq. ft, Porch 72 sq. ft, Patio 1441 sq. ft, Covered patio 34 sq. ft, Fireplace 12 sq. ft, Walls: 153 sq. ft

Property summary

 1 Floors

 3 Bedrooms

 2 Bathrooms

Home report

**71 Windtree Drive, Westlake Corner, Moneta, Franklin County,
Virginia, United States, 24121**



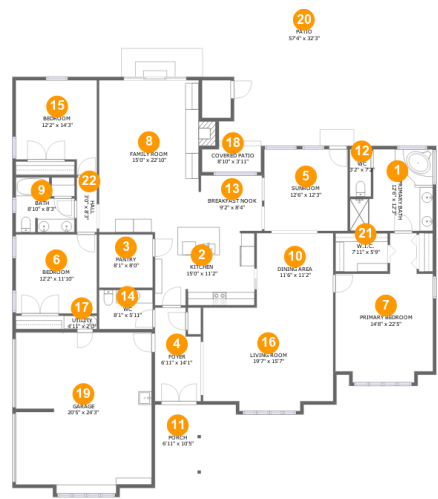
1
Half baths



1
Garages

Home report

71 Windtree Drive, Westlake Corner, Moneta, Franklin County,
Virginia, United States, 24121



Room dimensions

Floor 1 Total:2375sqft Excluded: 2048sqft

#		Max Dimensions	sqft	Included
1	Primary Bath	12'6" x 12'3"	127 sq. ft	Yes
2	Kitchen	15'0" x 11'2"	166 sq. ft	Yes
3	Pantry	8'1" x 8'0"	65 sq. ft	Yes
4	Foyer	6'11" x 14'1"	87 sq. ft	Yes
5	Sunroom	12'6" x 12'3"	154 sq. ft	Yes
6	Bedroom	12'2" x 11'10"	145 sq. ft	Yes
7	Primary Bedroom	14'8" x 22'5"	255 sq. ft	Yes
8	Family Room	15'0" x 22'10"	353 sq. ft	Yes
9	Bath	8'10" x 8'3"	60 sq. ft	Yes
10	Dining Area	11'6" x 11'2"	129 sq. ft	Yes
11	Porch	6'11" x 10'5"	72 sq. ft	No

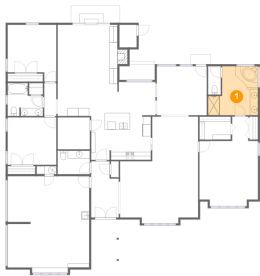
Home report

**71 Windtree Drive, Westlake Corner, Moneta, Franklin County,
Virginia, United States, 24121**

#		Max Dimensions	sqft	Included
12	WC	3'2" x 7'2"	23 sq. ft	Yes
13	Breakfast Nook	9'2" x 8'4"	78 sq. ft	Yes
14	WC	8'1" x 5'11"	48 sq. ft	Yes
15	Bedroom	12'2" x 14'3"	152 sq. ft	Yes
16	Living Room	19'7" x 15'7"	289 sq. ft	Yes
17	Utility	4'11" x 2'0"	10 sq. ft	Yes
18	Covered Patio	8'10" x 3'11"	34 sq. ft	No
19	Garage	20'5" x 24'3"	477 sq. ft	No
20	Patio	57'4" x 32'3"	1441 sq. ft	No
21	W.I.C.	7'11" x 5'9"	45 sq. ft	Yes
22	Hall	3'0" x 8'3"	25 sq. ft	Yes

71 Windtree Drive, Westlake Corner, Moneta, Franklin County,
Virginia, United States, 24121

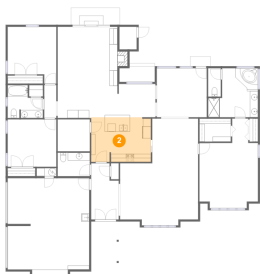
1 Floor 1 - Primary Bath



Max Dimensions: 12'6" x 12'3"
Calculated Area: 127 sq. ft
Included: Yes

Heated: Yes
Finished: Yes
Enclosed: Yes
Contiguous: Yes
Permitted: Yes
Wet space: Yes
Addition: No
Conversion: No

2 Floor 1 - Kitchen



Max Dimensions: 15'0" x 11'2"
Calculated Area: 166 sq. ft
Included: Yes

Heated: Yes
Finished: Yes
Enclosed: Yes
Contiguous: Yes
Permitted: Yes
Wet space: No
Addition: No
Conversion: No

71 Windtree Drive, Westlake Corner, Moneta, Franklin County,
Virginia, United States, 24121

3 Floor 1 - Pantry



Max Dimensions: 8'1" x 8'0"
Calculated Area: 65 sq. ft
Included: Yes

Heated: Yes
Finished: Yes
Enclosed: Yes
Contiguous: Yes
Permitted: Yes
Wet space: No
Addition: No
Conversion: No

4 Floor 1 - Foyer



Max Dimensions: 6'11" x 14'1"
Calculated Area: 87 sq. ft
Included: Yes

Heated: Yes
Finished: Yes
Enclosed: Yes
Contiguous: Yes
Permitted: Yes
Wet space: No
Addition: No
Conversion: No

5 Floor 1 - Sunroom



Max Dimensions: 12'6" x 12'3"
Calculated Area: 154 sq. ft
Included: Yes

Heated: Yes
Finished: Yes
Enclosed: Yes
Contiguous: Yes
Permitted: Yes
Wet space: No
Addition: No
Conversion: No

71 Windtree Drive, Westlake Corner, Moneta, Franklin County,
Virginia, United States, 24121

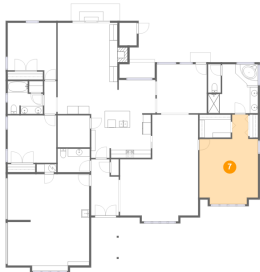
6 Floor 1 - Bedroom



Max Dimensions: 12'2" x 11'10"
Calculated Area: 145 sq. ft
Included: Yes

Heated: Yes
Finished: Yes
Enclosed: Yes
Contiguous: Yes
Permitted: Yes
Wet space: No
Addition: No
Conversion: No

7 Floor 1 - Primary Bedroom



Max Dimensions: 14'8" x 22'5"
Calculated Area: 255 sq. ft
Included: Yes

Heated: Yes
Finished: Yes
Enclosed: Yes
Contiguous: Yes
Permitted: Yes
Wet space: No
Addition: No
Conversion: No

8 Floor 1 - Family Room



Max Dimensions: 15'0" x 22'10"
Calculated Area: 353 sq. ft
Included: Yes

Heated: Yes
Finished: Yes
Enclosed: Yes
Contiguous: Yes
Permitted: Yes
Wet space: No
Addition: No
Conversion: No

71 Windtree Drive, Westlake Corner, Moneta, Franklin County,
Virginia, United States, 24121

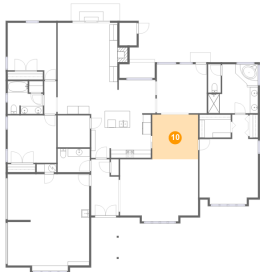
9 Floor 1 - Bath



Max Dimensions: 8'10" x 8'3"
Calculated Area: 60 sq. ft
Included: Yes

Heated: Yes
Finished: Yes
Enclosed: Yes
Contiguous: Yes
Permitted: Yes
Wet space: Yes
Addition: No
Conversion: No

10 Floor 1 - Dining Area



Max Dimensions: 11'6" x 11'2"
Calculated Area: 129 sq. ft
Included: Yes

Heated: Yes
Finished: Yes
Enclosed: Yes
Contiguous: Yes
Permitted: Yes
Wet space: No
Addition: No
Conversion: No

11 Floor 1 - Porch



Max Dimensions: 6'11" x 10'5"
Calculated Area: 72 sq. ft
Included: No

Heated: No
Finished: Yes
Enclosed: No
Contiguous: Yes
Permitted: Yes
Wet space: No
Addition: No
Conversion: No

71 Windtree Drive, Westlake Corner, Moneta, Franklin County,
Virginia, United States, 24121

12 Floor 1 - WC



Max Dimensions: 3'2" x 7'2"
Calculated Area: 23 sq. ft
Included: Yes

Heated: Yes
Finished: Yes
Enclosed: Yes
Contiguous: Yes
Permitted: Yes
Wet space: Yes
Addition: No
Conversion: No

13 Floor 1 - Breakfast Nook



Max Dimensions: 9'2" x 8'4"
Calculated Area: 78 sq. ft
Included: Yes

Heated: Yes
Finished: Yes
Enclosed: Yes
Contiguous: Yes
Permitted: Yes
Wet space: No
Addition: No
Conversion: No

14 Floor 1 - WC



Max Dimensions: 8'1" x 5'11"
Calculated Area: 48 sq. ft
Included: Yes

Heated: Yes
Finished: Yes
Enclosed: Yes
Contiguous: Yes
Permitted: Yes
Wet space: Yes
Addition: No
Conversion: No

71 Windtree Drive, Westlake Corner, Moneta, Franklin County,
Virginia, United States, 24121

15 Floor 1 - Bedroom



Max Dimensions: 12'2" x 14'3"
Calculated Area: 152 sq. ft
Included: Yes

Heated: Yes
Finished: Yes
Enclosed: Yes
Contiguous: Yes
Permitted: Yes
Wet space: No
Addition: No
Conversion: No

16 Floor 1 - Living Room



Max Dimensions: 19'7" x 15'7"
Calculated Area: 289 sq. ft
Included: Yes

Heated: Yes
Finished: Yes
Enclosed: Yes
Contiguous: Yes
Permitted: Yes
Wet space: No
Addition: No
Conversion: No

17 Floor 1 - Utility



Max Dimensions: 4'11" x 2'0"
Calculated Area: 10 sq. ft
Included: No

Heated: Yes
Finished: No
Enclosed: Yes
Contiguous: Yes
Permitted: Yes
Wet space: No
Addition: No
Conversion: No

71 Windtree Drive, Westlake Corner, Moneta, Franklin County,
Virginia, United States, 24121

18 Floor 1 - Covered Patio



Max Dimensions: 8'10" x 3'11"
Calculated Area: 34 sq. ft
Included: No

Heated: No
Finished: Yes
Enclosed: No
Contiguous: Yes
Permitted: Yes
Wet space: No
Addition: No
Conversion: No

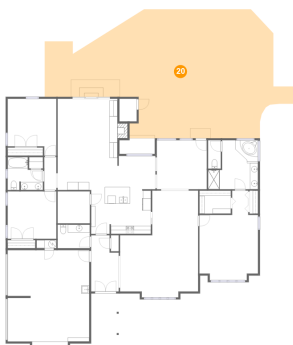
19 Floor 1 - Garage



Max Dimensions: 20'5" x 24'3"
Calculated Area: 477 sq. ft
Included: No

Heated: No
Finished: No
Enclosed: Yes
Contiguous: Yes
Permitted: Yes
Wet space: No
Addition: No
Conversion: No

20 Floor 1 - Patio



Max Dimensions: 57'4" x 32'3"
Calculated Area: 1441 sq. ft
Included: No

Heated: No
Finished: Yes
Enclosed: No
Contiguous: Yes
Permitted: Yes
Wet space: No
Addition: No
Conversion: No

71 Windtree Drive, Westlake Corner, Moneta, Franklin County,
Virginia, United States, 24121

21 Floor 1 - W.I.C.



Max Dimensions: 7'11" x 5'9"
Calculated Area: 45 sq. ft
Included: Yes

Heated: Yes
Finished: Yes
Enclosed: Yes
Contiguous: Yes
Permitted: Yes
Wet space: No
Addition: No
Conversion: No

22 Floor 1 - Hall



Max Dimensions: 3'0" x 8'3"
Calculated Area: 25 sq. ft
Included: Yes

Heated: Yes
Finished: Yes
Enclosed: Yes
Contiguous: Yes
Permitted: Yes
Wet space: No
Addition: No
Conversion: No