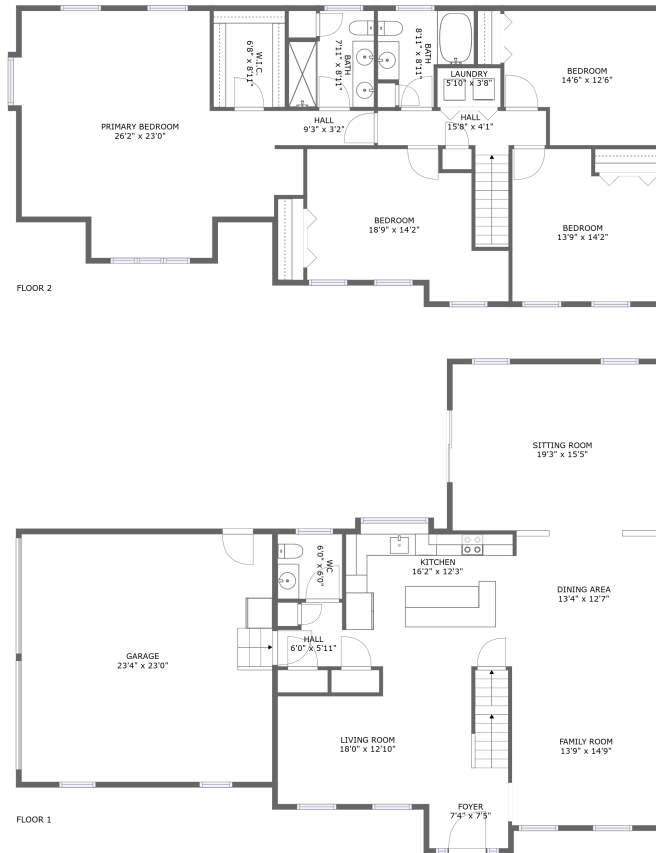



6 Cordwood Circle, Carver, Plymouth County, Massachusetts, United States, 02330



Property summary


 **1** Garages

 **4** Bedrooms

 **2** Bathrooms

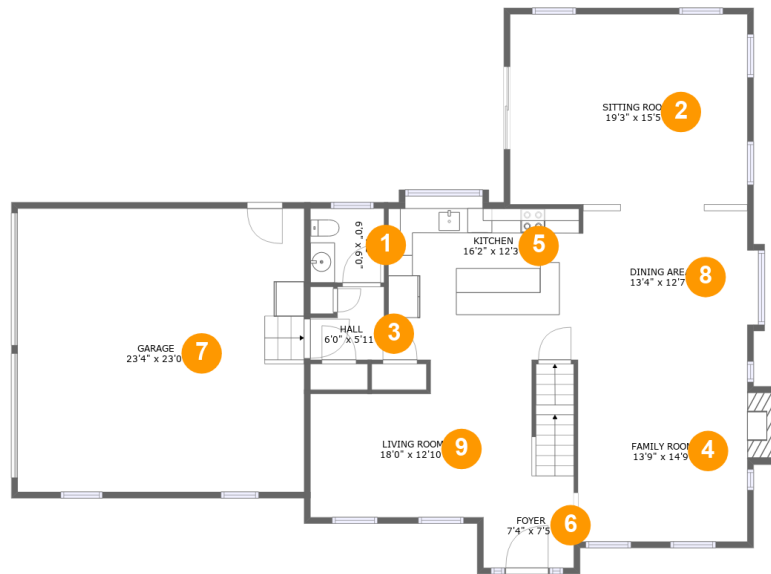
 **1** Half baths

 **2** Floors

 **2,824** Gross living area sqft

 **3,459** Total sqft

6 Cordwood Circle, Carver, Plymouth County, Massachusetts, United States, 02330



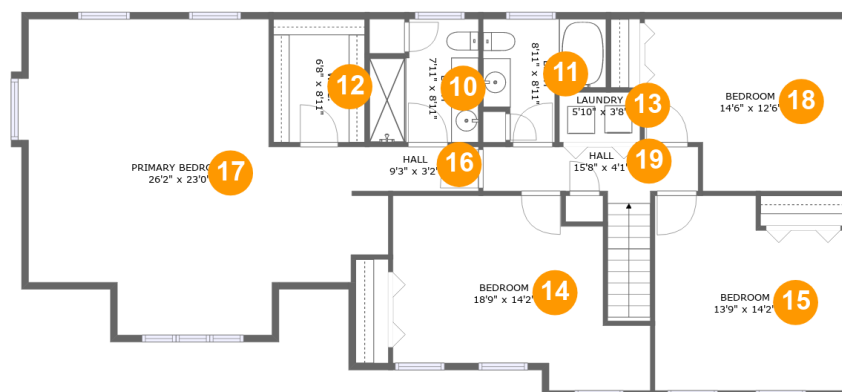
Room dimensions

Floor 1

Total sqft: 1935 Living area: 1335

#		Dimensions	sqft	Counted as living area
1	WC	6'0" x 6'0"	36 sq. ft	Yes
2	Sitting Room	19'3" x 15'5"	298 sq. ft	Yes
3	Hall	6'0" x 5'11"	30 sq. ft	Yes
4	Family Room	13'9" x 14'9"	216 sq. ft	Yes
5	Kitchen	16'2" x 12'3"	195 sq. ft	Yes
6	Foyer	7'4" x 7'5"	48 sq. ft	Yes
7	Garage	23'4" x 23'0"	536 sq. ft	No
8	Dining Area	13'4" x 12'7"	169 sq. ft	Yes
9	Living Room	18'0" x 12'10"	226 sq. ft	Yes

6 Cordwood Circle, Carver, Plymouth County, Massachusetts, United States, 02330



Room dimensions

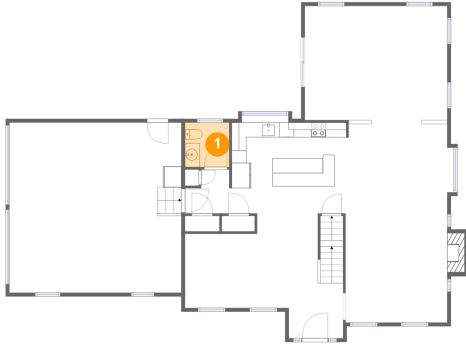
Floor 2

Total sqft: 1524 Living area: 1489

#		Dimensions	sqft	Counted as living area
10	Bath	7'11" x 8'11"	63 sq. ft	Yes
11	Bath	8'11" x 8'11"	60 sq. ft	Yes
12	W.I.C.	6'8" x 8'11"	60 sq. ft	Yes
13	Laundry	5'10" x 3'8"	21 sq. ft	Yes
14	Bedroom	18'9" x 14'2"	203 sq. ft	Yes
15	Bedroom	13'9" x 14'2"	179 sq. ft	Yes
16	Hall	9'3" x 3'2"	30 sq. ft	Yes
17	Primary Bedroom	26'2" x 23'0"	424 sq. ft	Yes
18	Bedroom	14'6" x 12'6"	166 sq. ft	Yes
19	Hall	15'8" x 4'1"	80 sq. ft	Yes

6 Cordwood Circle, Carver, Plymouth County, Massachusetts, United States, 02330

1 Floor 1 - WC



Dimensions: 6'0" x 6'0"
Area: 36 sq. ft
Counted as living area: Yes

Heated: Yes
Finished: Yes
Enclosed: Yes
Contiguous: Yes
Permitted: Yes
Wet space: Yes
Addition: No
Conversion: No

2 Floor 1 - Sitting Room



Dimensions: 19'3" x 15'5"
Area: 298 sq. ft
Counted as living area: Yes

Heated: Yes
Finished: Yes
Enclosed: Yes
Contiguous: Yes
Permitted: Yes
Wet space: No
Addition: No
Conversion: No

6 Cordwood Circle, Carver, Plymouth County, Massachusetts, United States, 02330

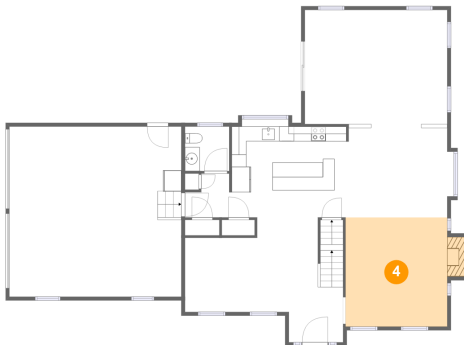
3 Floor 1 - Hall



Dimensions: 6'0" x 5'11"
Area: 30 sq. ft
Counted as living area: Yes

Heated: Yes
Finished: Yes
Enclosed: Yes
Contiguous: Yes
Permitted: Yes
Wet space: No
Addition: No
Conversion: No

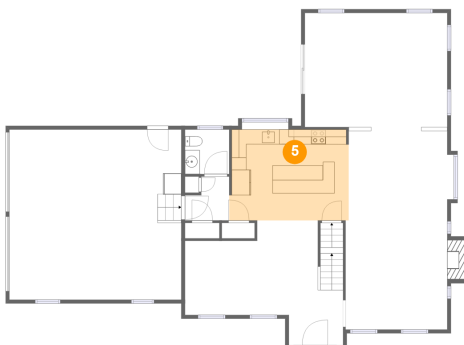
4 Floor 1 - Family Room



Dimensions: 13'9" x 14'9"
Area: 216 sq. ft
Counted as living area: Yes

Heated: Yes
Finished: Yes
Enclosed: Yes
Contiguous: Yes
Permitted: Yes
Wet space: No
Addition: No
Conversion: No

5 Floor 1 - Kitchen

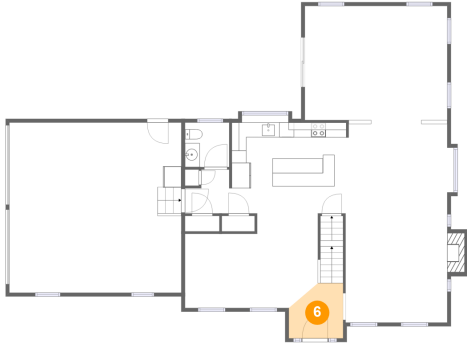


Dimensions: 16'2" x 12'3"
Area: 195 sq. ft
Counted as living area: Yes

Heated: Yes
Finished: Yes
Enclosed: Yes
Contiguous: Yes
Permitted: Yes
Wet space: No
Addition: No
Conversion: No

6 Cordwood Circle, Carver, Plymouth County, Massachusetts, United States, 02330

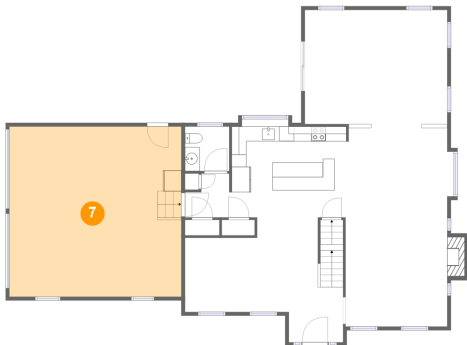
6 Floor 1 - Foyer



Dimensions: 7'4" x 7'5"
Area: 48 sq. ft
Counted as living area: Yes

Heated: Yes
Finished: Yes
Enclosed: Yes
Contiguous: Yes
Permitted: Yes
Wet space: No
Addition: No
Conversion: No

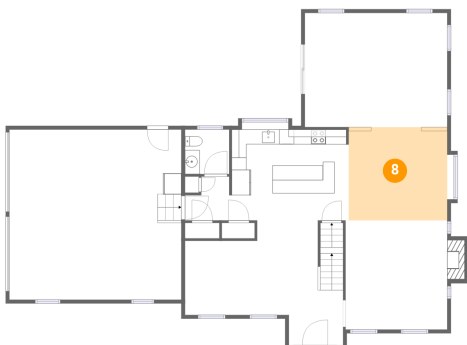
7 Floor 1 - Garage



Dimensions: 23'4" x 23'0"
Area: 536 sq. ft
Counted as living area: No

Heated: No
Finished: No
Enclosed: Yes
Contiguous: Yes
Permitted: Yes
Wet space: No
Addition: No
Conversion: No

8 Floor 1 - Dining Area

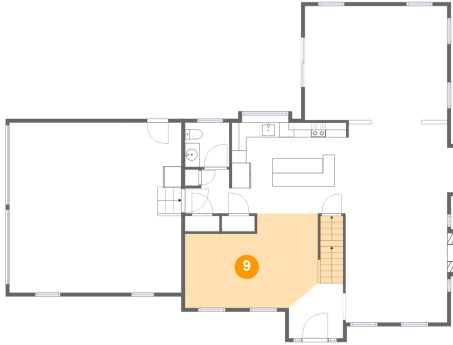


Dimensions: 13'4" x 12'7"
Area: 169 sq. ft
Counted as living area: Yes

Heated: Yes
Finished: Yes
Enclosed: Yes
Contiguous: Yes
Permitted: Yes
Wet space: No
Addition: No
Conversion: No

6 Cordwood Circle, Carver, Plymouth County, Massachusetts, United States, 02330

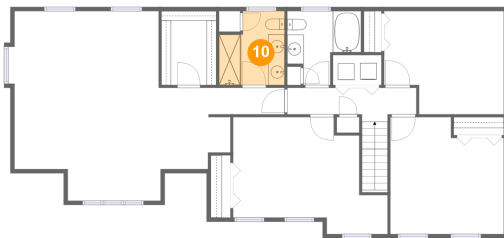
9 Floor 1 - Living Room



Dimensions: 18'0" x 12'10"
Area: 226 sq. ft
Counted as living area: Yes

Heated: Yes
Finished: Yes
Enclosed: Yes
Contiguous: Yes
Permitted: Yes
Wet space: No
Addition: No
Conversion: No

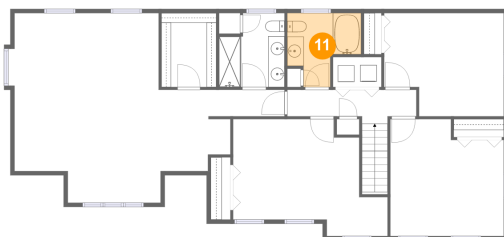
10 Floor 2 - Bath



Dimensions: 7'11" x 8'11"
Area: 63 sq. ft
Counted as living area: Yes

Heated: Yes
Finished: Yes
Enclosed: Yes
Contiguous: Yes
Permitted: Yes
Wet space: Yes
Addition: No
Conversion: No

11 Floor 2 - Bath



Dimensions: 8'11" x 8'11"
Area: 60 sq. ft
Counted as living area: Yes

Heated: Yes
Finished: Yes
Enclosed: Yes
Contiguous: Yes
Permitted: Yes
Wet space: Yes
Addition: No
Conversion: No

**6 Cordwood Circle, Carver, Plymouth County,
Massachusetts, United States, 02330**

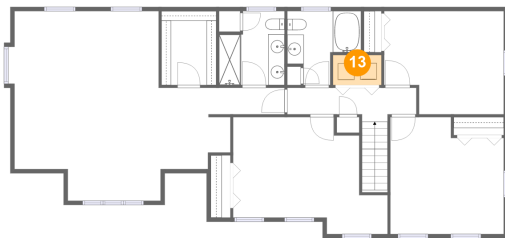
12 Floor 2 - W.I.C.



Dimensions: 6'8" x 8'11"
Area: 60 sq. ft
Counted as living area: Yes

Heated: Yes
Finished: Yes
Enclosed: Yes
Contiguous: Yes
Permitted: Yes
Wet space: No
Addition: No
Conversion: No

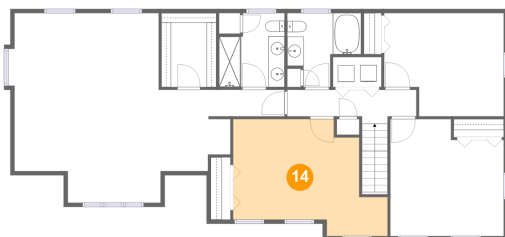
13 Floor 2 - Laundry



Dimensions: 5'10" x 3'8"
Area: 21 sq. ft
Counted as living area: Yes

Heated: Yes
Finished: Yes
Enclosed: Yes
Contiguous: Yes
Permitted: Yes
Wet space: No
Addition: No
Conversion: No

14 Floor 2 - Bedroom

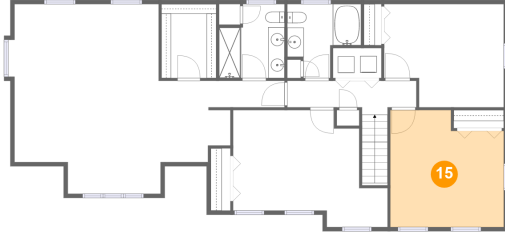


Dimensions: 18'9" x 14'2"
Area: 203 sq. ft
Counted as living area: Yes

Heated: Yes
Finished: Yes
Enclosed: Yes
Contiguous: Yes
Permitted: Yes
Wet space: No
Addition: No
Conversion: No

**6 Cordwood Circle, Carver, Plymouth County,
Massachusetts, United States, 02330**

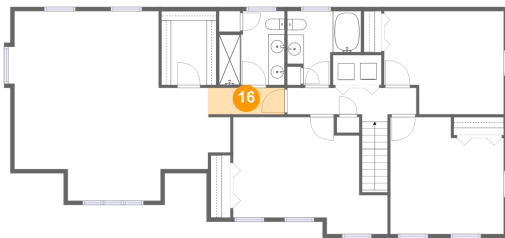
15 Floor 2 - Bedroom



Dimensions: 13'9" x 14'2"
Area: 179 sq. ft
Counted as living area: Yes

Heated: Yes
Finished: Yes
Enclosed: Yes
Contiguous: Yes
Permitted: Yes
Wet space: No
Addition: No
Conversion: No

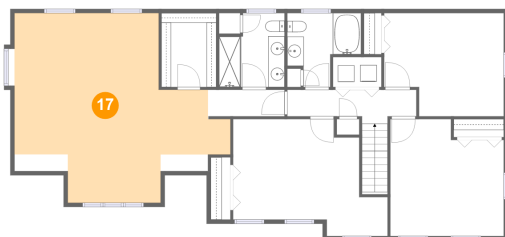
16 Floor 2 - Hall



Dimensions: 9'3" x 3'2"
Area: 30 sq. ft
Counted as living area: Yes

Heated: Yes
Finished: Yes
Enclosed: Yes
Contiguous: Yes
Permitted: Yes
Wet space: No
Addition: No
Conversion: No

17 Floor 2 - Primary Bedroom

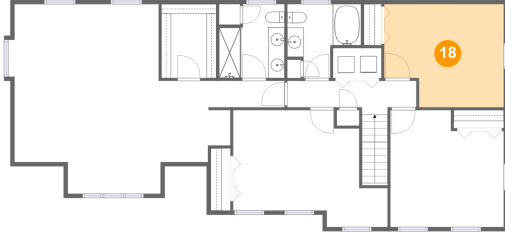


Dimensions: 26'2" x 23'0"
Area: 424 sq. ft
Counted as living area: Yes

Heated: Yes
Finished: Yes
Enclosed: Yes
Contiguous: Yes
Permitted: Yes
Wet space: No
Addition: No
Conversion: No

**6 Cordwood Circle, Carver, Plymouth County,
Massachusetts, United States, 02330**

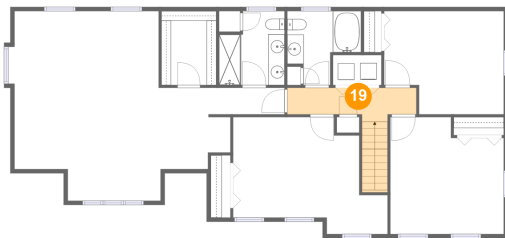
18 Floor 2 - Bedroom



Dimensions: 14'6" x 12'6"
Area: 166 sq. ft
Counted as living area: Yes

Heated: Yes
Finished: Yes
Enclosed: Yes
Contiguous: Yes
Permitted: Yes
Wet space: No
Addition: No
Conversion: No

19 Floor 2 - Hall



Dimensions: 15'8" x 4'1"
Area: 80 sq. ft
Counted as living area: Yes

Heated: Yes
Finished: Yes
Enclosed: Yes
Contiguous: Yes
Permitted: Yes
Wet space: No
Addition: No
Conversion: No