

Home report

1610 Linkland Court, Cumberland, Cumberland, Ontario,
Canada, K4C 0A5



Total Area: 3545 sq. ft
Below Ground: 1203 sq. ft, Floor 2: 3545 sq. ft
Excluded: Basement 919 sq. ft, Storage 673 sq. ft, Room 87 sq. ft, Hall 55 sq. ft, Utility 250 sq. ft, Walls: 287 sq. ft

Property summary

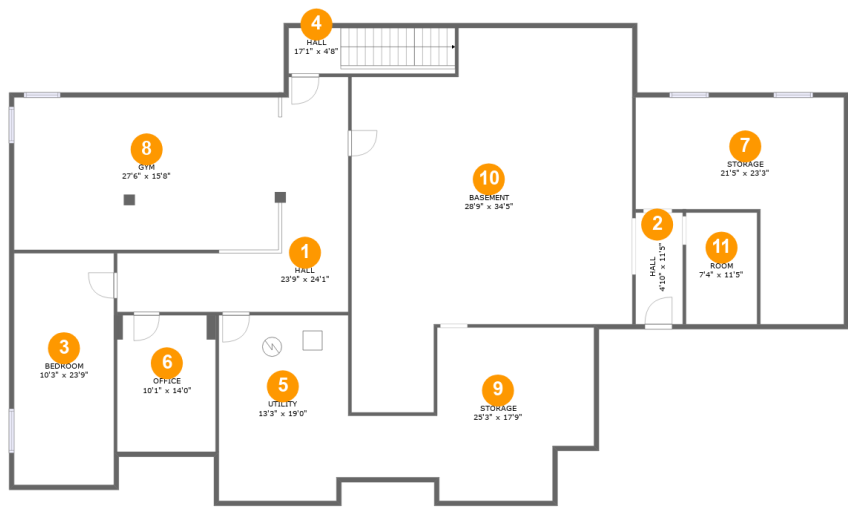
 **2** Floors

 **5** Bedrooms

 **3** Bathrooms

Home report

1610 Linkland Court, Cumberland, Cumberland, Ontario,
Canada, K4C 0A5



Room dimensions

Floor 1 Below ground Total:1203sqft Excluded: 1984sqft

#		Max Dimensions	sqft	Included
1	Hall	23'9" x 24'1"	265 sq. ft	Yes
2	Hall	4'10" x 11'5"	55 sq. ft	No
3	Bedroom	10'3" x 23'9"	243 sq. ft	Yes
4	Hall	17'1" x 4'8"	80 sq. ft	Yes
5	Utility	13'3" x 19'0"	250 sq. ft	No
6	Office	10'1" x 14'0"	141 sq. ft	Yes
7	Storage	21'5" x 23'3"	346 sq. ft	No
8	Gym	27'6" x 15'8"	431 sq. ft	Yes
9	Storage	25'3" x 17'9"	319 sq. ft	No
10	Basement	28'9" x 34'5"	896 sq. ft	No
11	Room	7'4" x 11'5"	84 sq. ft	No

Home report

1610 Linkland Court, Cumberland, Cumberland, Ontario,
Canada, K4C 0A5



Room dimensions

Floor 2 Total:3545sqft Excluded: 0sqft

#		Max Dimensions	sqft	Included
12	Laundry	8'11" x 13'5"	96 sq. ft	Yes
13	Bath	7'10" x 5'7"	43 sq. ft	Yes
14	Bedroom	12'3" x 17'3"	193 sq. ft	Yes
15	Bedroom	11'1" x 17'6"	172 sq. ft	Yes
16	Office	10'9" x 13'0"	140 sq. ft	Yes
17	Living Room	21'9" x 34'5"	748 sq. ft	Yes
18	W.I.C.	8'6" x 9'7"	81 sq. ft	Yes
19	Bedroom	12'1" x 17'3"	204 sq. ft	Yes
20	Foyer	10'2" x 10'7"	108 sq. ft	Yes
21	Hall	20'7" x 9'7"	143 sq. ft	Yes
22	Bath	10'1" x 4'11"	50 sq. ft	Yes

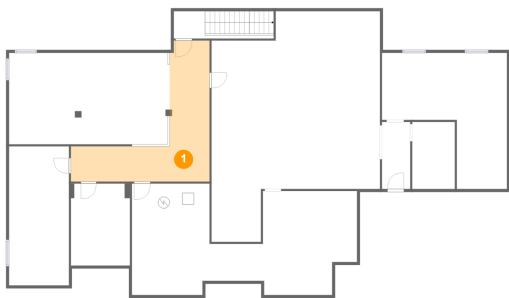
Home report

**1610 Linkland Court, Cumberland, Cumberland, Ontario,
Canada, K4C 0A5**

#		Max Dimensions	sqft	Included
23	Kitchen	15'4" x 14'6"	221 sq. ft	Yes
24	Hall	19'8" x 5'1"	95 sq. ft	Yes
25	Primary Bath	10'7" x 17'1"	180 sq. ft	Yes
26	Primary Bedroom	18'1" x 15'6"	281 sq. ft	Yes
27	Bath	10'9" x 6'9"	73 sq. ft	Yes
28	Hall	17'10" x 7'3"	94 sq. ft	Yes
29	Dining Area	11'8" x 15'11"	180 sq. ft	Yes
30	Breakfast Nook	15'4" x 12'9"	196 sq. ft	Yes

1610 Linkland Court, Cumberland, Cumberland, Ontario,
Canada, K4C 0A5

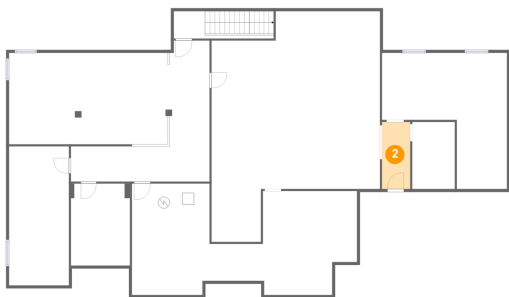
1 Floor 1 - Hall



Max Dimensions: 23'9" x 24'1"
Calculated Area: 265 sq. ft
Included: Yes

Heated: Yes
Finished: Yes
Enclosed: Yes
Contiguous: Yes
Permitted: Yes
Wet space: No
Addition: No
Conversion: No

2 Floor 1 - Hall



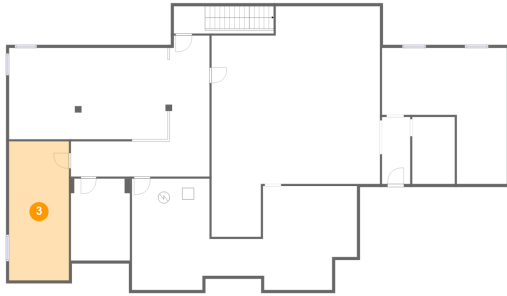
Max Dimensions: 4'10" x 11'5"
Calculated Area: 55 sq. ft
Included: No

Heated: Yes
Finished: No
Enclosed: Yes
Contiguous: Yes
Permitted: Yes
Wet space: No
Addition: No
Conversion: No

Home report

1610 Linkland Court, Cumberland, Cumberland, Ontario,
Canada, K4C 0A5

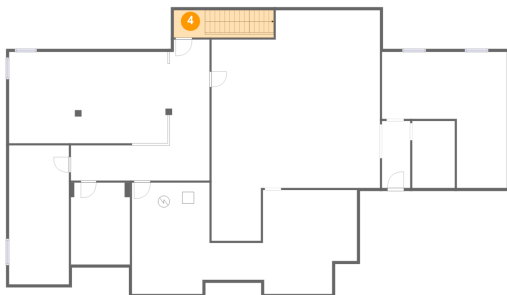
3 Floor 1 - Bedroom



Max Dimensions: 10'3" x 23'9"
Calculated Area: 243 sq. ft
Included: Yes

Heated: Yes
Finished: Yes
Enclosed: Yes
Contiguous: Yes
Permitted: Yes
Wet space: No
Addition: No
Conversion: No

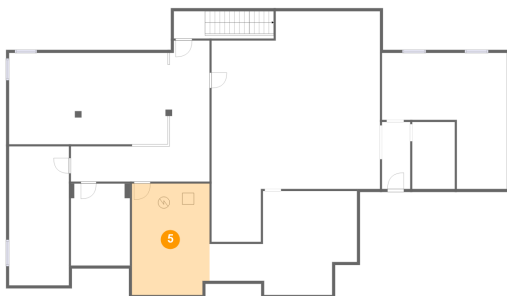
4 Floor 1 - Hall



Max Dimensions: 17'1" x 4'8"
Calculated Area: 80 sq. ft
Included: Yes

Heated: Yes
Finished: Yes
Enclosed: Yes
Contiguous: Yes
Permitted: Yes
Wet space: No
Addition: No
Conversion: No

5 Floor 1 - Utility

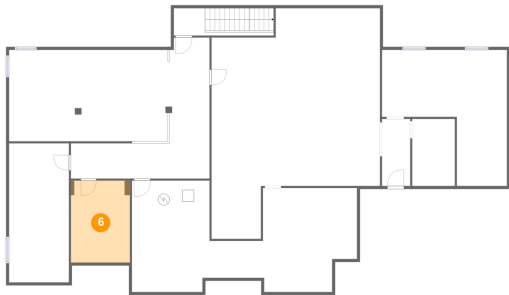


Max Dimensions: 13'3" x 19'0"
Calculated Area: 250 sq. ft
Included: No

Heated: Yes
Finished: No
Enclosed: Yes
Contiguous: Yes
Permitted: Yes
Wet space: No
Addition: No
Conversion: No

1610 Linkland Court, Cumberland, Cumberland, Ontario,
Canada, K4C 0A5

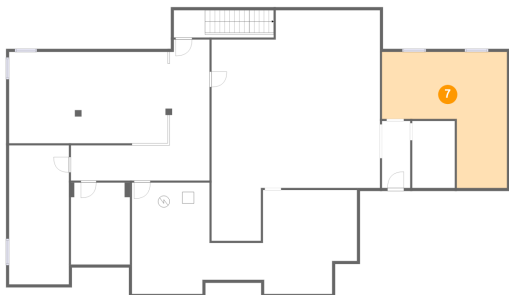
6 Floor 1 - Office



Max Dimensions: 10'1" x 14'0"
Calculated Area: 141 sq. ft
Included: Yes

Heated: Yes
Finished: Yes
Enclosed: Yes
Contiguous: Yes
Permitted: Yes
Wet space: No
Addition: No
Conversion: No

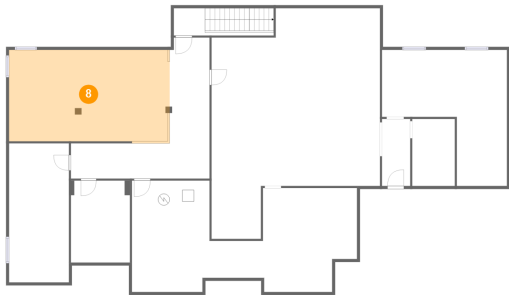
7 Floor 1 - Storage



Max Dimensions: 21'5" x 23'3"
Calculated Area: 346 sq. ft
Included: No

Heated: No
Finished: No
Enclosed: No
Contiguous: Yes
Permitted: Yes
Wet space: No
Addition: No
Conversion: No

8 Floor 1 - Gym

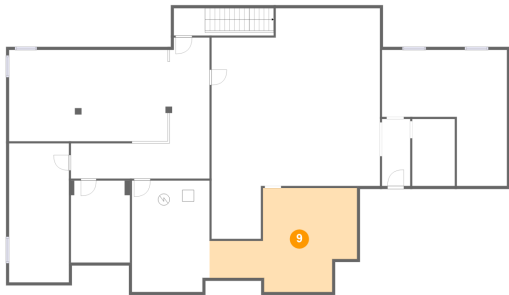


Max Dimensions: 27'6" x 15'8"
Calculated Area: 431 sq. ft
Included: Yes

Heated: Yes
Finished: Yes
Enclosed: Yes
Contiguous: Yes
Permitted: Yes
Wet space: No
Addition: No
Conversion: No

1610 Linkland Court, Cumberland, Cumberland, Ontario,
Canada, K4C 0A5

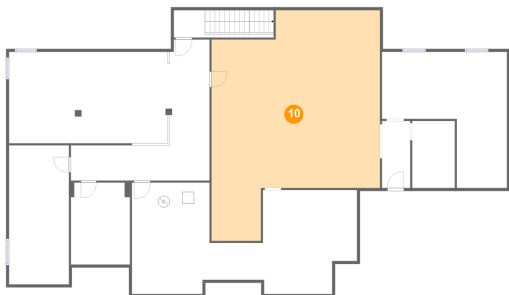
9 Floor 1 - Storage



Max Dimensions: 25'3" x 17'9"
Calculated Area: 319 sq. ft
Included: No

Heated: No
Finished: No
Enclosed: No
Contiguous: Yes
Permitted: Yes
Wet space: No
Addition: No
Conversion: No

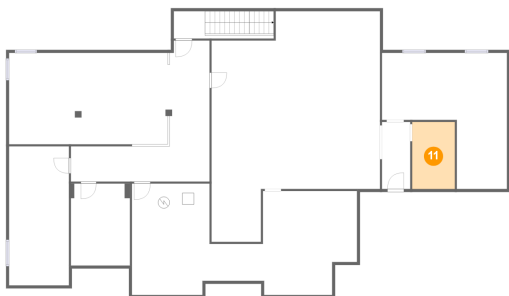
10 Floor 1 - Basement



Max Dimensions: 28'9" x 34'5"
Calculated Area: 896 sq. ft
Included: No

Heated: Yes
Finished: No
Enclosed: Yes
Contiguous: Yes
Permitted: Yes
Wet space: No
Addition: No
Conversion: No

11 Floor 1 - Room



Max Dimensions: 7'4" x 11'5"
Calculated Area: 84 sq. ft
Included: No

Heated: Yes
Finished: No
Enclosed: Yes
Contiguous: Yes
Permitted: Yes
Wet space: No
Addition: No
Conversion: No

Home report

1610 Linkland Court, Cumberland, Cumberland, Ontario,
Canada, K4C 0A5

12 Floor 2 - Laundry



Max Dimensions: 8'11" x 13'5"
Calculated Area: 96 sq. ft
Included: Yes

Heated: Yes
Finished: Yes
Enclosed: Yes
Contiguous: Yes
Permitted: Yes
Wet space: No
Addition: No
Conversion: No

13 Floor 2 - Bath



Max Dimensions: 7'10" x 5'7"
Calculated Area: 43 sq. ft
Included: Yes

Heated: Yes
Finished: Yes
Enclosed: Yes
Contiguous: Yes
Permitted: Yes
Wet space: Yes
Addition: No
Conversion: No

14 Floor 2 - Bedroom



Max Dimensions: 12'3" x 17'3"
Calculated Area: 193 sq. ft
Included: Yes

Heated: Yes
Finished: Yes
Enclosed: Yes
Contiguous: Yes
Permitted: Yes
Wet space: No
Addition: No
Conversion: No

Home report

1610 Linkland Court, Cumberland, Cumberland, Ontario,
Canada, K4C 0A5

15 Floor 2 - Bedroom



Max Dimensions: 11'1" x 17'6"
Calculated Area: 172 sq. ft
Included: Yes

Heated: Yes
Finished: Yes
Enclosed: Yes
Contiguous: Yes
Permitted: Yes
Wet space: No
Addition: No
Conversion: No

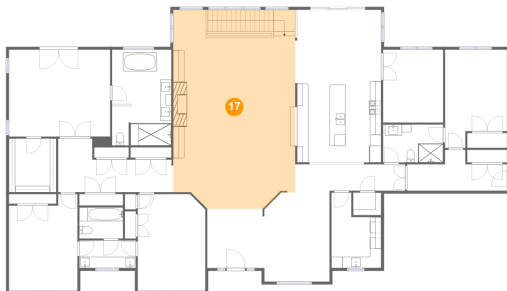
16 Floor 2 - Office



Max Dimensions: 10'9" x 13'0"
Calculated Area: 140 sq. ft
Included: Yes

Heated: Yes
Finished: Yes
Enclosed: Yes
Contiguous: Yes
Permitted: Yes
Wet space: No
Addition: No
Conversion: No

17 Floor 2 - Living Room



Max Dimensions: 21'9" x 34'5"
Calculated Area: 748 sq. ft
Included: Yes

Heated: Yes
Finished: Yes
Enclosed: Yes
Contiguous: Yes
Permitted: Yes
Wet space: No
Addition: No
Conversion: No

Home report

1610 Linkland Court, Cumberland, Cumberland, Ontario,
Canada, K4C 0A5

18 Floor 2 - W.I.C.



Max Dimensions: 8'6" x 9'7"
Calculated Area: 81 sq. ft
Included: Yes

Heated: Yes
Finished: Yes
Enclosed: Yes
Contiguous: Yes
Permitted: Yes
Wet space: No
Addition: No
Conversion: No

19 Floor 2 - Bedroom



Max Dimensions: 12'1" x 17'3"
Calculated Area: 204 sq. ft
Included: Yes

Heated: Yes
Finished: Yes
Enclosed: Yes
Contiguous: Yes
Permitted: Yes
Wet space: No
Addition: No
Conversion: No

20 Floor 2 - Foyer



Max Dimensions: 10'2" x 10'7"
Calculated Area: 108 sq. ft
Included: Yes

Heated: Yes
Finished: Yes
Enclosed: Yes
Contiguous: Yes
Permitted: Yes
Wet space: No
Addition: No
Conversion: No

Home report

1610 Linkland Court, Cumberland, Cumberland, Ontario,
Canada, K4C 0A5

21 Floor 2 - Hall



Max Dimensions: 20'7" x 9'7"
Calculated Area: 143 sq. ft
Included: Yes

Heated: Yes
Finished: Yes
Enclosed: Yes
Contiguous: Yes
Permitted: Yes
Wet space: No
Addition: No
Conversion: No

22 Floor 2 - Bath



Max Dimensions: 10'1" x 4'11"
Calculated Area: 50 sq. ft
Included: Yes

Heated: Yes
Finished: Yes
Enclosed: Yes
Contiguous: Yes
Permitted: Yes
Wet space: Yes
Addition: No
Conversion: No

23 Floor 2 - Kitchen



Max Dimensions: 15'4" x 14'6"
Calculated Area: 221 sq. ft
Included: Yes

Heated: Yes
Finished: Yes
Enclosed: Yes
Contiguous: Yes
Permitted: Yes
Wet space: No
Addition: No
Conversion: No

1610 Linkland Court, Cumberland, Cumberland, Ontario,
Canada, K4C 0A5

24 Floor 2 - Hall



Max Dimensions: 19'8" x 5'1"
Calculated Area: 95 sq. ft
Included: Yes

Heated: Yes
Finished: Yes
Enclosed: Yes
Contiguous: Yes
Permitted: Yes
Wet space: No
Addition: No
Conversion: No

25 Floor 2 - Primary Bath



Max Dimensions: 10'7" x 17'1"
Calculated Area: 180 sq. ft
Included: Yes

Heated: Yes
Finished: Yes
Enclosed: Yes
Contiguous: Yes
Permitted: Yes
Wet space: Yes
Addition: No
Conversion: No

26 Floor 2 - Primary Bedroom



Max Dimensions: 18'1" x 15'6"
Calculated Area: 281 sq. ft
Included: Yes

Heated: Yes
Finished: Yes
Enclosed: Yes
Contiguous: Yes
Permitted: Yes
Wet space: No
Addition: No
Conversion: No

1610 Linkland Court, Cumberland, Cumberland, Ontario,
Canada, K4C 0A5

27 Floor 2 - Bath



Max Dimensions: 10'9" x 6'9"
Calculated Area: 73 sq. ft
Included: Yes

Heated: Yes
Finished: Yes
Enclosed: Yes
Contiguous: Yes
Permitted: Yes
Wet space: Yes
Addition: No
Conversion: No

28 Floor 2 - Hall



Max Dimensions: 17'10" x 7'3"
Calculated Area: 94 sq. ft
Included: Yes

Heated: Yes
Finished: Yes
Enclosed: Yes
Contiguous: Yes
Permitted: Yes
Wet space: No
Addition: No
Conversion: No

29 Floor 2 - Dining Area



Max Dimensions: 11'8" x 15'11"
Calculated Area: 180 sq. ft
Included: Yes

Heated: Yes
Finished: Yes
Enclosed: Yes
Contiguous: Yes
Permitted: Yes
Wet space: No
Addition: No
Conversion: No

1610 Linkland Court, Cumberland, Cumberland, Ontario,
Canada, K4C 0A5

30 Floor 2 - Breakfast Nook



Max Dimensions: 15'4" x 12'9"
Calculated Area: 196 sq. ft
Included: Yes

Heated: Yes
Finished: Yes
Enclosed: Yes
Contiguous: Yes
Permitted: Yes
Wet space: No
Addition: No
Conversion: No