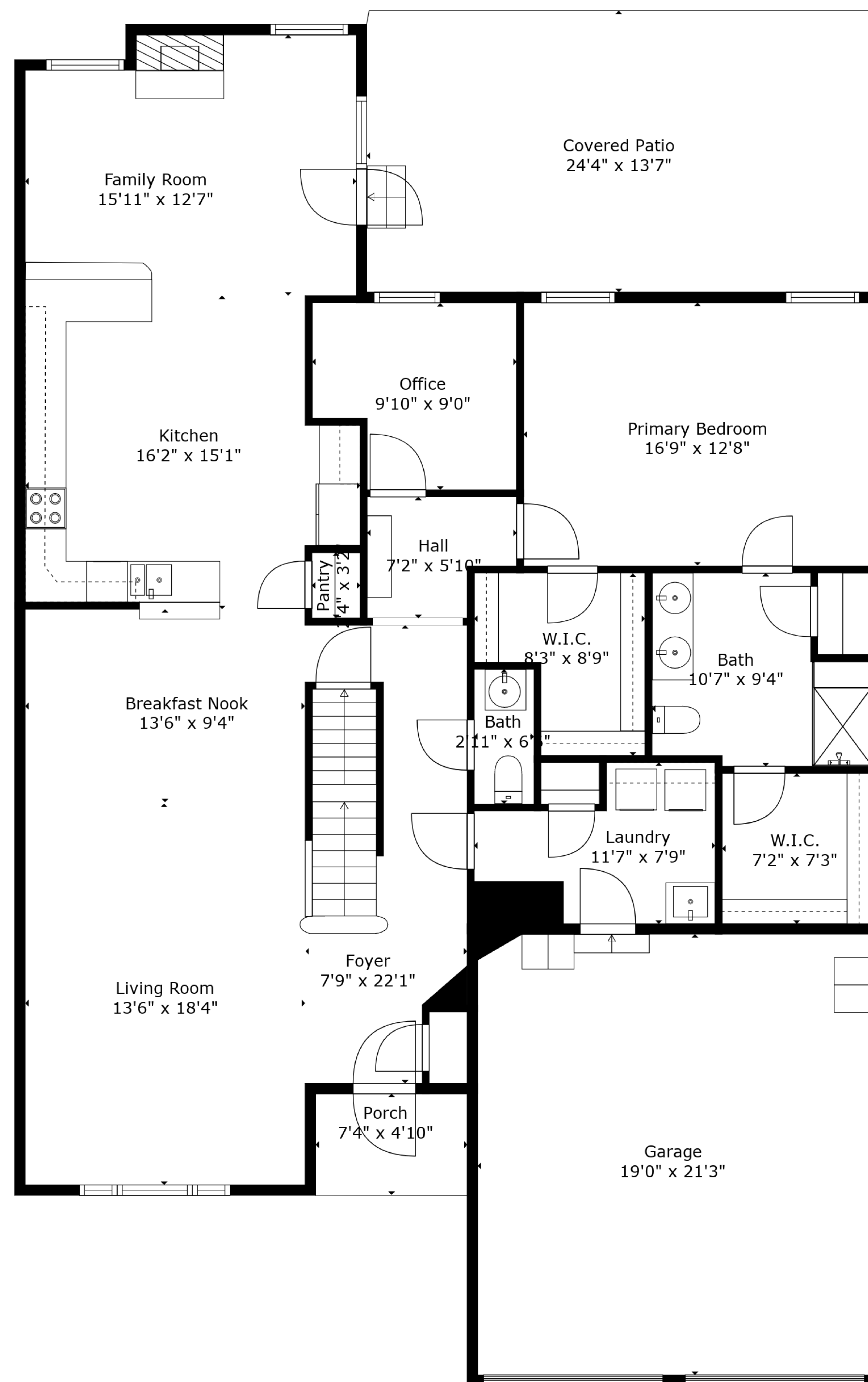


Basement  
40'9" x 51'7"

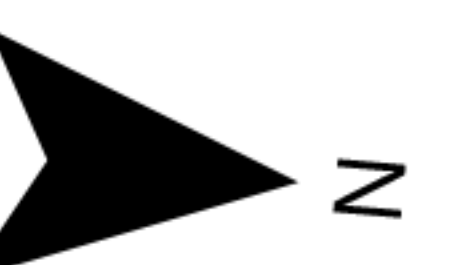
**TOTAL: 2390 sq. ft**  
BELOW GROUND: 0 sq. ft, FLOOR 2: 1645 sq. ft, FLOOR 3: 745 sq. ft  
EXCLUDED AREAS: BASEMENT: 1593 sq. ft, GARAGE: 402 sq. ft, PORCH: 36 sq. ft,  
COVERED PATIO: 329 sq. ft, OPEN TO BELOW: 464 sq. ft  
WALLS: 240 sq. ft



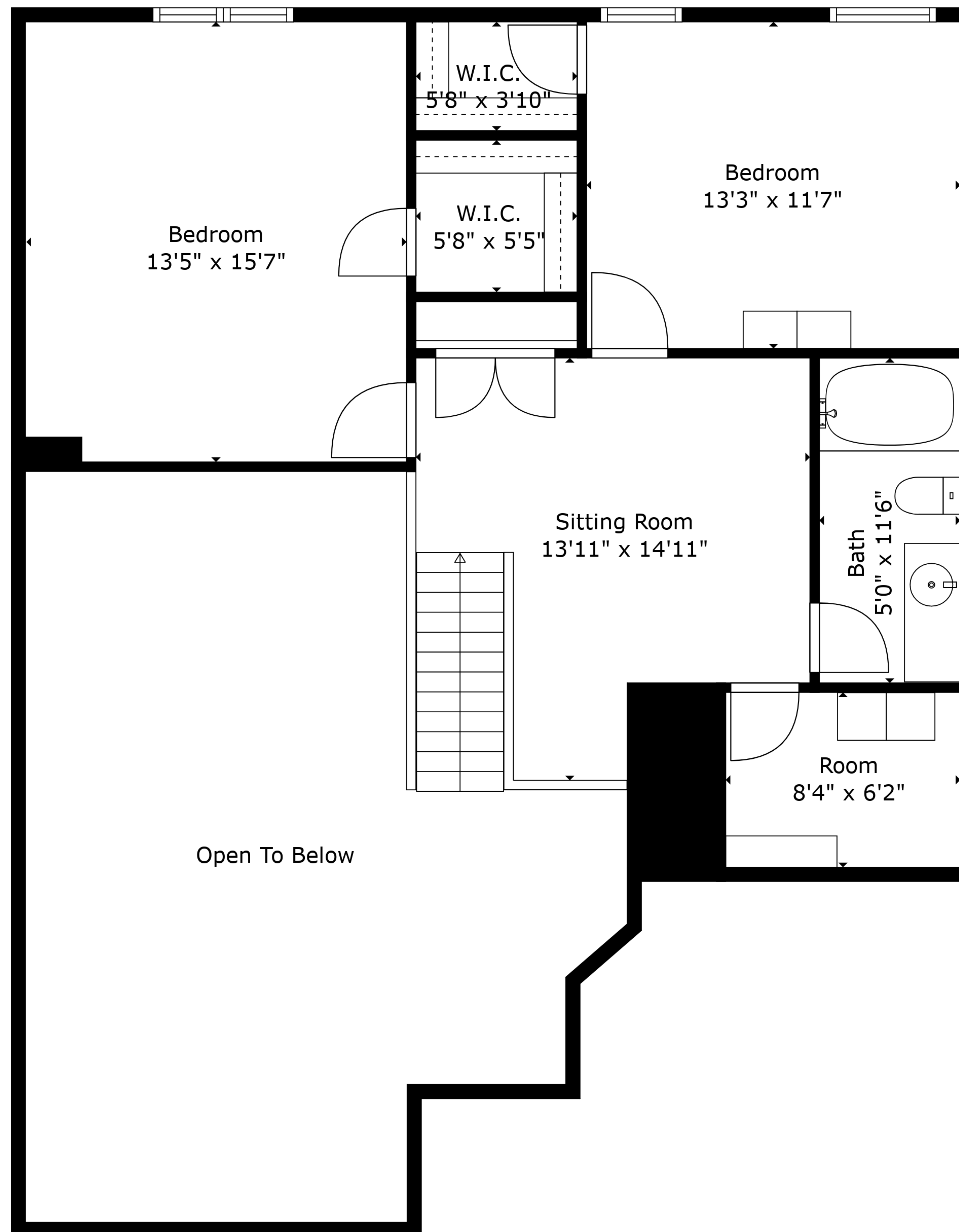


**TOTAL: 2390 sq. ft**

BELOW GROUND: 0 sq. ft, FLOOR 2: 1645 sq. ft, FLOOR 3: 745 sq. ft  
 EXCLUDED AREAS: BASEMENT: 1593 sq. ft, GARAGE: 402 sq. ft, PORCH: 36 sq. ft,  
 COVERED PATIO: 329 sq. ft, OPEN TO BELOW: 464 sq. ft  
 WALLS: 240 sq. ft







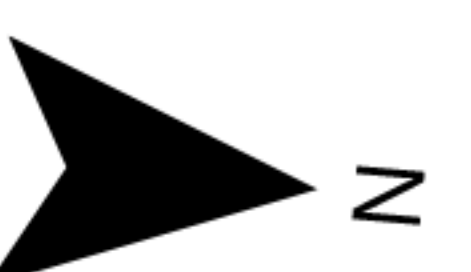
**TOTAL: 2390 sq. ft**

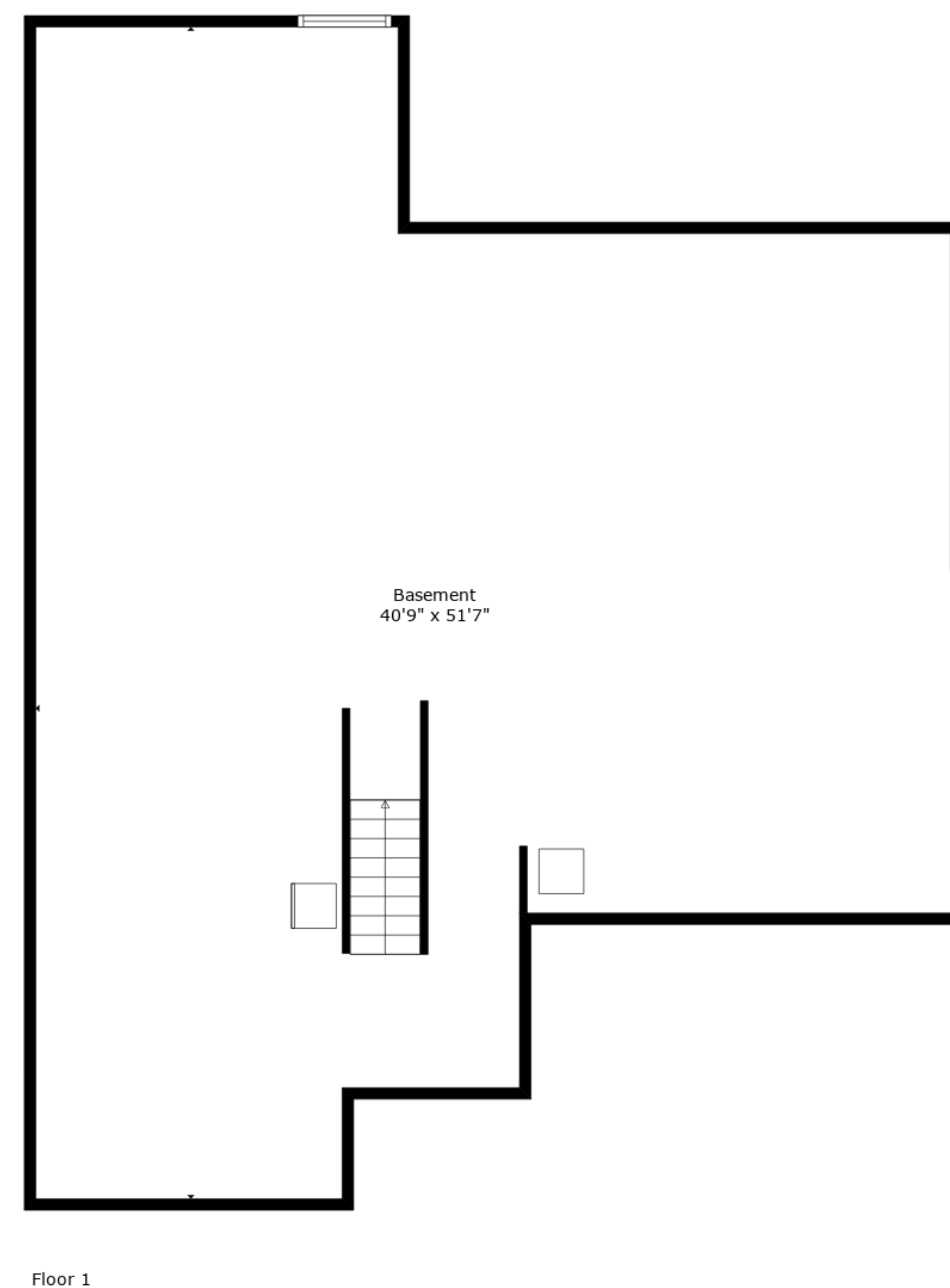
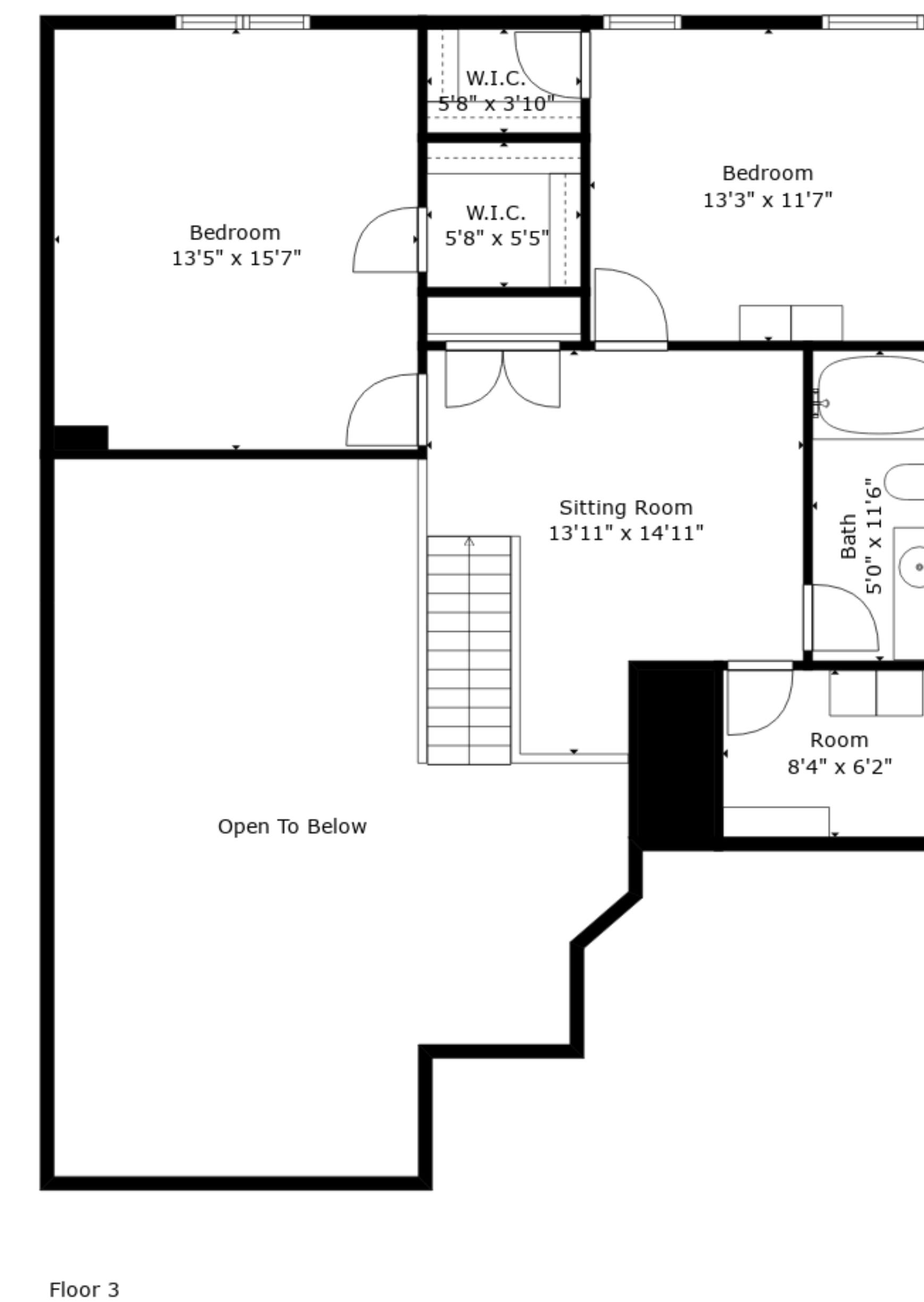
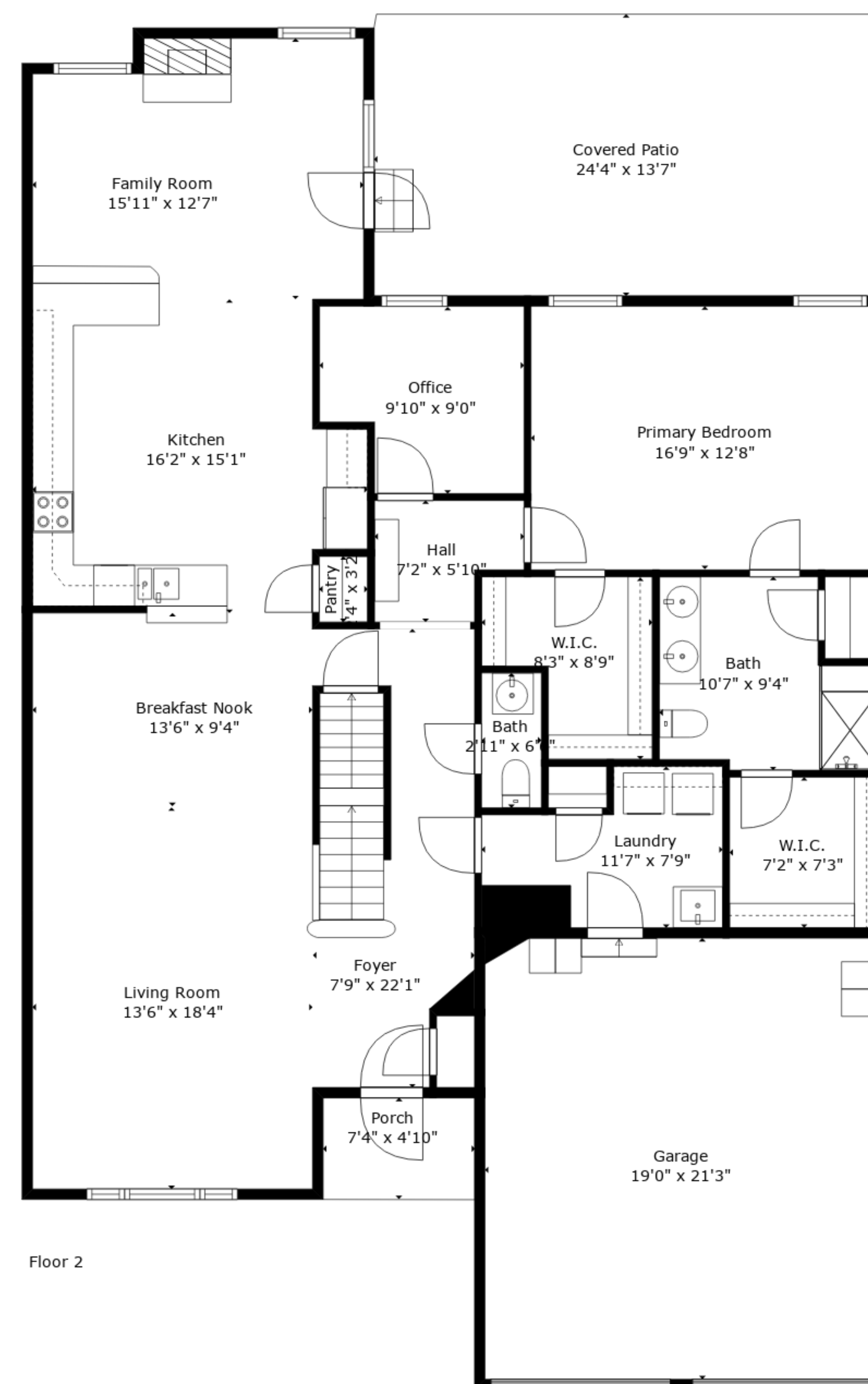
BELOW GROUND: 0 sq. ft, FLOOR 2: 1645 sq. ft, FLOOR 3: 745 sq. ft

EXCLUDED AREAS: BASEMENT: 1593 sq. ft, GARAGE: 402 sq. ft, PORCH: 36 sq. ft,

COVERED PATIO: 329 sq. ft, OPEN TO BELOW: 464 sq. ft

WALLS: 240 sq. ft





**TOTAL: 2390 sq. ft**

BELOW GROUND: 0 sq. ft, FLOOR 2: 1645 sq. ft, FLOOR 3: 745 sq. ft  
 EXCLUDED AREAS: BASEMENT: 1593 sq. ft, GARAGE: 402 sq. ft, PORCH: 36 sq. ft,  
 COVERED PATIO: 329 sq. ft, OPEN TO BELOW: 464 sq. ft  
 WALLS: 240 sq. ft

