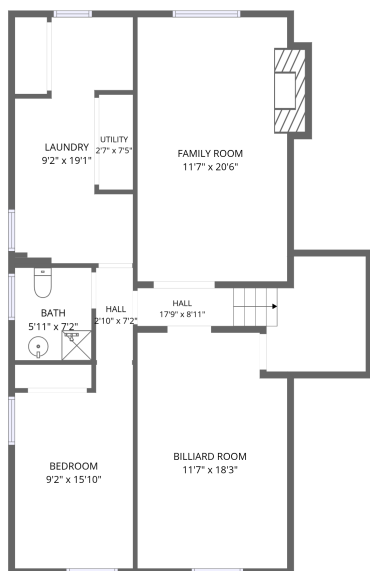
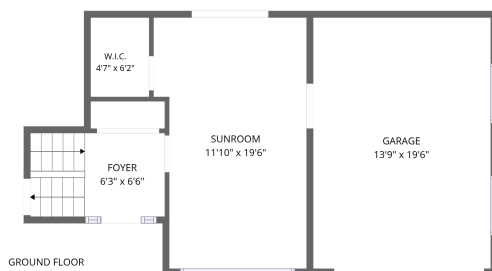


Home data report

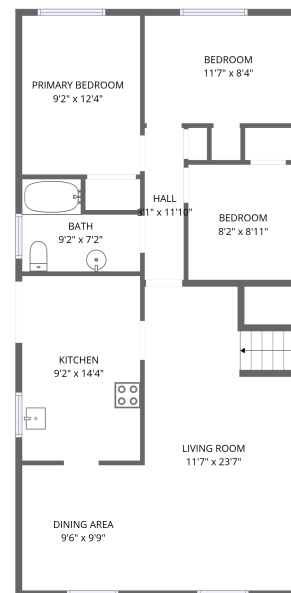
668 Bridle Wood, Pinedale, Burlington, Halton County, Ontario, Canada, L7L 4E1



LOWER LEVEL



GROUND FLOOR



MAIN FLOOR

Total Area: 2397 sq. ft

1st Floor: 1028 sq. ft, 2nd Floor: 374 sq. ft, 3rd Floor: 995 sq. ft

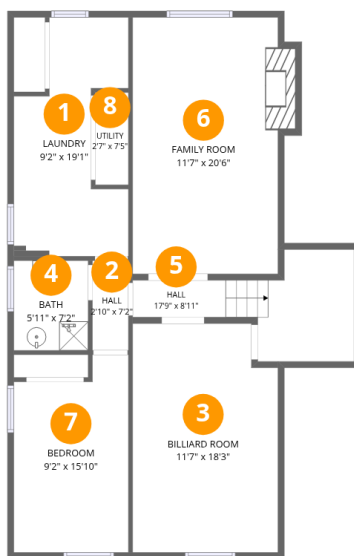
Excluded: Fireplace 10 sq. ft, Garage 292 sq. ft

Property summary



Home data report

668 Bridle Wood, Pinedale, Burlington, Halton County, Ontario, Canada, L7L 4E1



Room dimensions

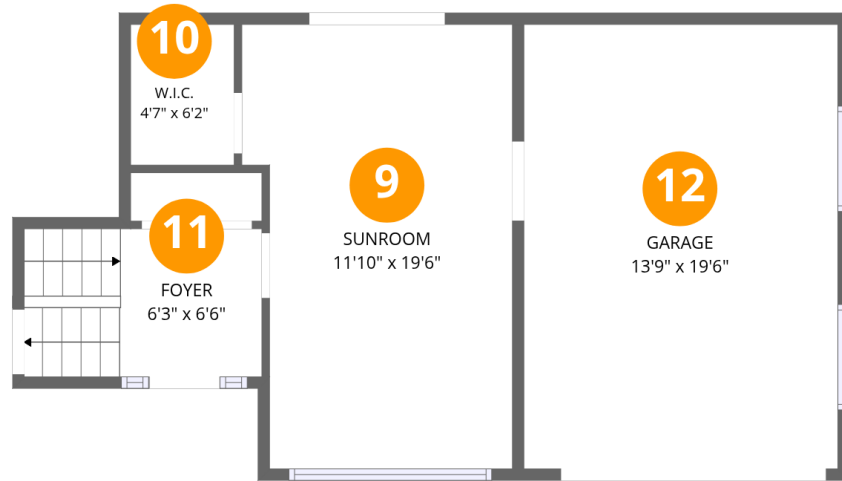
Floor 1

Total:1028sqft Excluded: 10sqft

#		Dimensions	sqft	Counted as living area
1	Laundry	9'2" x 19'1"	133 sq. ft	Yes
2	Hall	2'10" x 7'2"	21 sq. ft	Yes
3	Billiard Room	11'7" x 18'3"	205 sq. ft	Yes
4	Bath	5'11" x 7'2"	43 sq. ft	Yes
5	Hall	17'9" x 8'11"	93 sq. ft	Yes
6	Family Room	11'7" x 20'6"	247 sq. ft	Yes
7	Bedroom	9'2" x 15'10"	131 sq. ft	Yes
8	Utility	2'7" x 7'5"	20 sq. ft	Yes

Home data report

668 Bridle Wood, Pinedale, Burlington, Halton County, Ontario, Canada, L7L 4E1



Room dimensions

Floor 2

Total:374sqft

Excluded: 292sqft

#		Dimensions	sqft	Counted as living area
9	Sunroom	11'10" x 19'6"	215 sq. ft	Yes
10	W.I.C.	4'7" x 6'2"	28 sq. ft	Yes
11	Foyer	6'3" x 6'6"	68 sq. ft	Yes
12	Garage	13'9" x 19'6"	268 sq. ft	No

Home data report

668 Bridle Wood, Pinedale, Burlington, Halton County, Ontario, Canada, L7L 4E1



Room dimensions

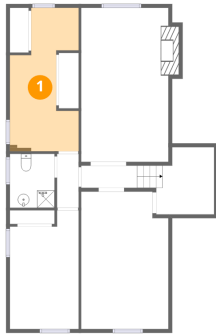
Floor 3

Total:995sqft Excluded: 0sqft

#		Dimensions	sqft	Counted as living area
13	Dining Area	9'6" x 9'9"	92 sq. ft	Yes
14	Kitchen	9'2" x 14'4"	131 sq. ft	Yes
15	Living Room	11'7" x 23'7"	257 sq. ft	Yes
16	Hall	3'1" x 11'10"	36 sq. ft	Yes
17	Bedroom	8'2" x 8'11"	74 sq. ft	Yes
18	Bath	9'2" x 7'2"	53 sq. ft	Yes
19	Primary Bedroom	9'2" x 12'4"	113 sq. ft	Yes
20	Bedroom	11'7" x 8'4"	97 sq. ft	Yes

668 Bridle Wood, Pinedale, Burlington, Halton County, Ontario,
Canada, L7L 4E1

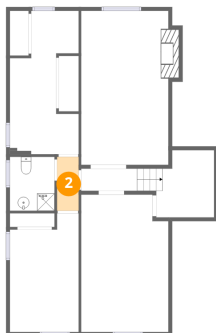
1 Floor 1 - Laundry



Dimensions: 9'2" x 19'1"
Area: 133 sq. ft
Counted as living area: Yes

Heated: Yes
Finished: Yes
Enclosed: Yes
Contiguous: Yes
Permitted: Yes
Wet space: No
Addition: No
Conversion: No

2 Floor 1 - Hall

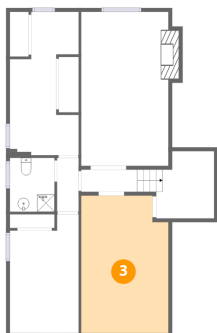


Dimensions: 2'10" x 7'2"
Area: 21 sq. ft
Counted as living area: Yes

Heated: Yes
Finished: Yes
Enclosed: Yes
Contiguous: Yes
Permitted: Yes
Wet space: No
Addition: No
Conversion: No

668 Bridle Wood, Pinedale, Burlington, Halton County, Ontario, Canada, L7L 4E1

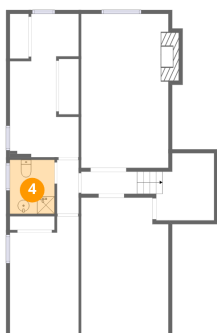
3 Floor 1 - Billiard Room



Dimensions: 11'7" x 18'3"
Area: 205 sq. ft
Counted as living area: Yes

Heated: Yes
Finished: Yes
Enclosed: Yes
Contiguous: Yes
Permitted: Yes
Wet space: No
Addition: No
Conversion: No

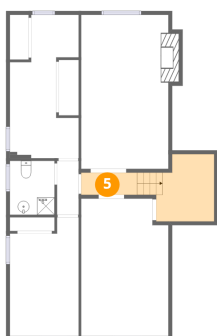
4 Floor 1 - Bath



Dimensions: 5'11" x 7'2"
Area: 43 sq. ft
Counted as living area: Yes

Heated: Yes
Finished: Yes
Enclosed: Yes
Contiguous: Yes
Permitted: Yes
Wet space: Yes
Addition: No
Conversion: No

5 Floor 1 - Hall

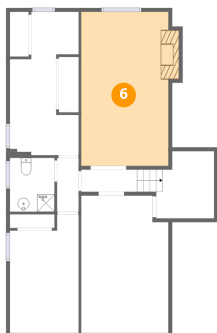


Dimensions: 17'9" x 8'11"
Area: 93 sq. ft
Counted as living area: Yes

Heated: Yes
Finished: Yes
Enclosed: Yes
Contiguous: Yes
Permitted: Yes
Wet space: No
Addition: No
Conversion: No

668 Bridle Wood, Pinedale, Burlington, Halton County, Ontario, Canada, L7L 4E1

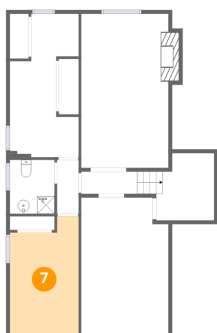
6 Floor 1 - Family Room



Dimensions: 11'7" x 20'6"
Area: 247 sq. ft
Counted as living area: Yes

Heated: Yes
Finished: Yes
Enclosed: Yes
Contiguous: Yes
Permitted: Yes
Wet space: No
Addition: No
Conversion: No

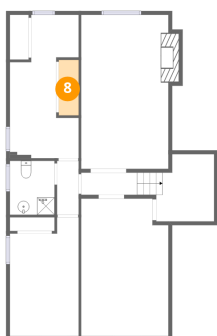
7 Floor 1 - Bedroom



Dimensions: 9'2" x 15'10"
Area: 131 sq. ft
Counted as living area: Yes

Heated: Yes
Finished: Yes
Enclosed: Yes
Contiguous: Yes
Permitted: Yes
Wet space: No
Addition: No
Conversion: No

8 Floor 1 - Utility

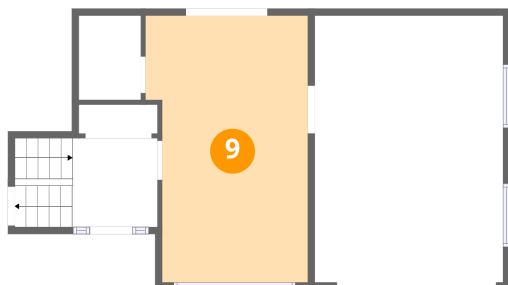


Dimensions: 2'7" x 7'5"
Area: 20 sq. ft
Counted as living area: Yes

Heated: Yes
Finished: Yes
Enclosed: Yes
Contiguous: Yes
Permitted: Yes
Wet space: No
Addition: No
Conversion: No

668 Bridle Wood, Pinedale, Burlington, Halton County, Ontario, Canada, L7L 4E1

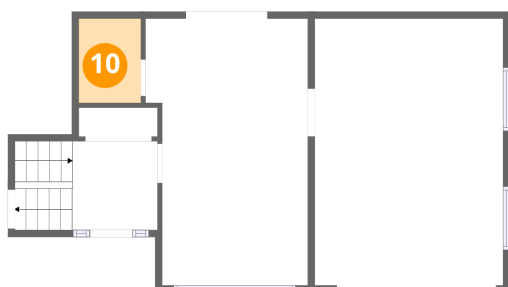
9 Floor 2 - Sunroom



Dimensions: 11'10" x 19'6"
Area: 215 sq. ft
Counted as living area: Yes

Heated: Yes
Finished: Yes
Enclosed: Yes
Contiguous: Yes
Permitted: Yes
Wet space: No
Addition: No
Conversion: No

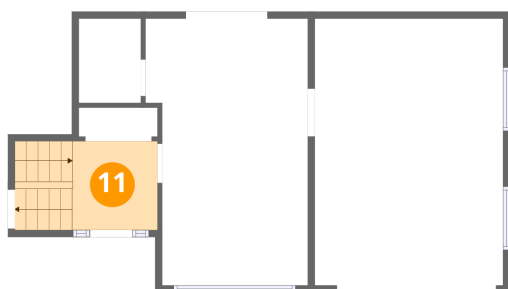
10 Floor 2 - W.I.C.



Dimensions: 4'7" x 6'2"
Area: 28 sq. ft
Counted as living area: Yes

Heated: Yes
Finished: Yes
Enclosed: Yes
Contiguous: Yes
Permitted: Yes
Wet space: No
Addition: No
Conversion: No

11 Floor 2 - Foyer

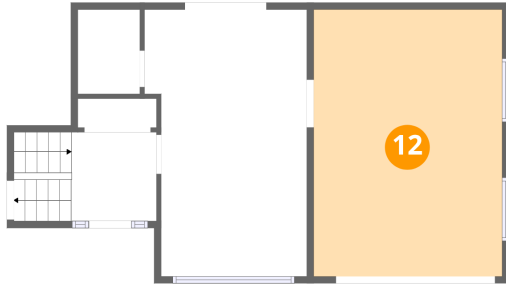


Dimensions: 6'3" x 6'6"
Area: 68 sq. ft
Counted as living area: Yes

Heated: Yes
Finished: Yes
Enclosed: Yes
Contiguous: Yes
Permitted: Yes
Wet space: No
Addition: No
Conversion: No

668 Bridle Wood, Pinedale, Burlington, Halton County, Ontario, Canada, L7L 4E1

12 Floor 2 - Garage



Dimensions: 13'9" x 19'6"
Area: 268 sq. ft
Counted as living area: No

Heated: No
Finished: No
Enclosed: Yes
Contiguous: Yes
Permitted: Yes
Wet space: No
Addition: No
Conversion: No

13 Floor 3 - Dining Area



Dimensions: 9'6" x 9'9"
Area: 92 sq. ft
Counted as living area: Yes

Heated: Yes
Finished: Yes
Enclosed: Yes
Contiguous: Yes
Permitted: Yes
Wet space: No
Addition: No
Conversion: No

14 Floor 3 - Kitchen



Dimensions: 9'2" x 14'4"
Area: 131 sq. ft
Counted as living area: Yes

Heated: Yes
Finished: Yes
Enclosed: Yes
Contiguous: Yes
Permitted: Yes
Wet space: No
Addition: No
Conversion: No

15 Floor 3 - Living Room



Dimensions: 11'7" x 23'7"
Area: 257 sq. ft
Counted as living area: Yes

Heated: Yes
Finished: Yes
Enclosed: Yes
Contiguous: Yes
Permitted: Yes
Wet space: No
Addition: No
Conversion: No

16 Floor 3 - Hall



Dimensions: 3'1" x 11'10"
Area: 36 sq. ft
Counted as living area: Yes

Heated: Yes
Finished: Yes
Enclosed: Yes
Contiguous: Yes
Permitted: Yes
Wet space: No
Addition: No
Conversion: No

17 Floor 3 - Bedroom



Dimensions: 8'2" x 8'11"
Area: 74 sq. ft
Counted as living area: Yes

Heated: Yes
Finished: Yes
Enclosed: Yes
Contiguous: Yes
Permitted: Yes
Wet space: No
Addition: No
Conversion: No

668 Bridle Wood, Pinedale, Burlington, Halton County, Ontario, Canada, L7L 4E1

18 Floor 3 - Bath



Dimensions: 9'2" x 7'2"
Area: 53 sq. ft
Counted as living area: Yes

Heated: Yes
Finished: Yes
Enclosed: Yes
Contiguous: Yes
Permitted: Yes
Wet space: Yes
Addition: No
Conversion: No

19 Floor 3 - Primary Bedroom



Dimensions: 9'2" x 12'4"
Area: 113 sq. ft
Counted as living area: Yes

Heated: Yes
Finished: Yes
Enclosed: Yes
Contiguous: Yes
Permitted: Yes
Wet space: No
Addition: No
Conversion: No

20 Floor 3 - Bedroom



Dimensions: 11'7" x 8'4"
Area: 97 sq. ft
Counted as living area: Yes

Heated: Yes
Finished: Yes
Enclosed: Yes
Contiguous: Yes
Permitted: Yes
Wet space: No
Addition: No
Conversion: No