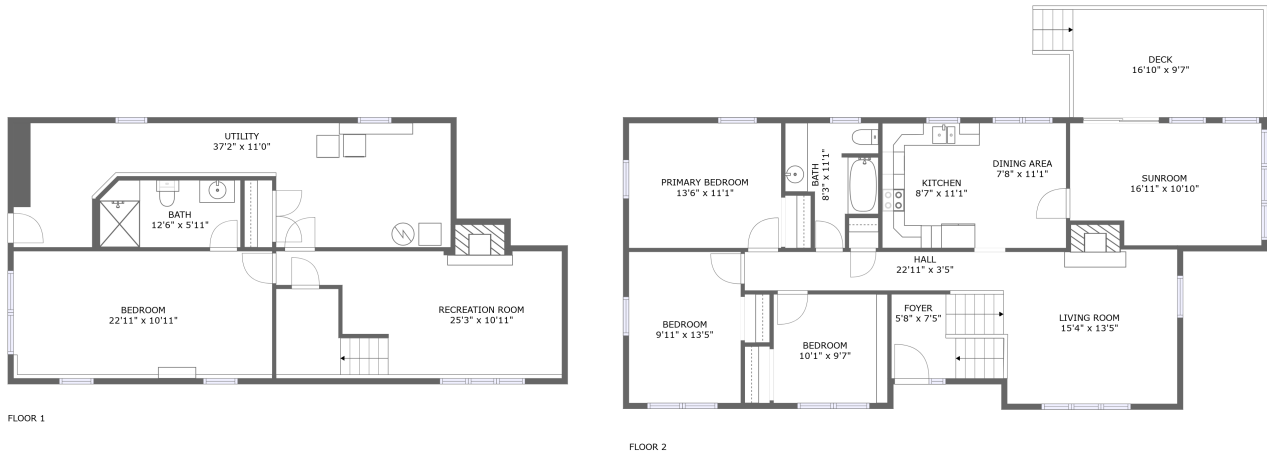


## Home report

37 Pine Ridge Drive, Candia, Rockingham County, New Hampshire, United States, 03034



**Total Area: 1930 sq. ft**

Below Ground: 669 sq. ft, Floor 2: 1261 sq. ft

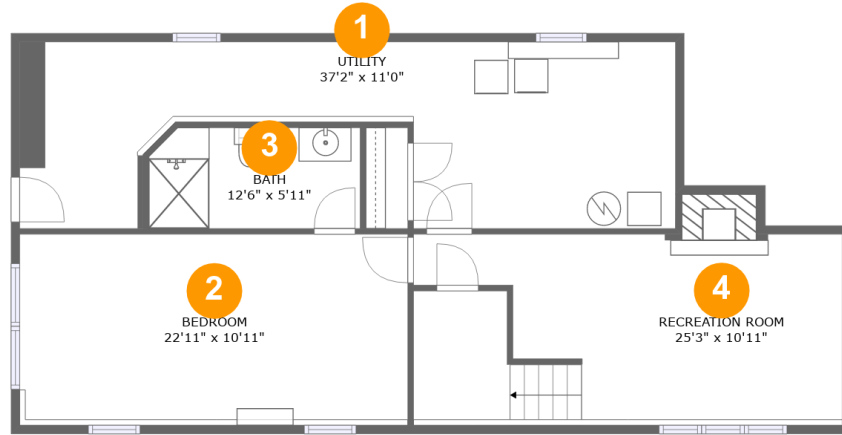
Excluded: Utility 327 sq. ft, Deck 161 sq. ft, Walls: 156 sq. ft

## Property summary



Home report

37 Pine Ridge Drive, Candia, Rockingham County, New Hampshire, United States, 03034



## Room dimensions

Floor 1 Below ground

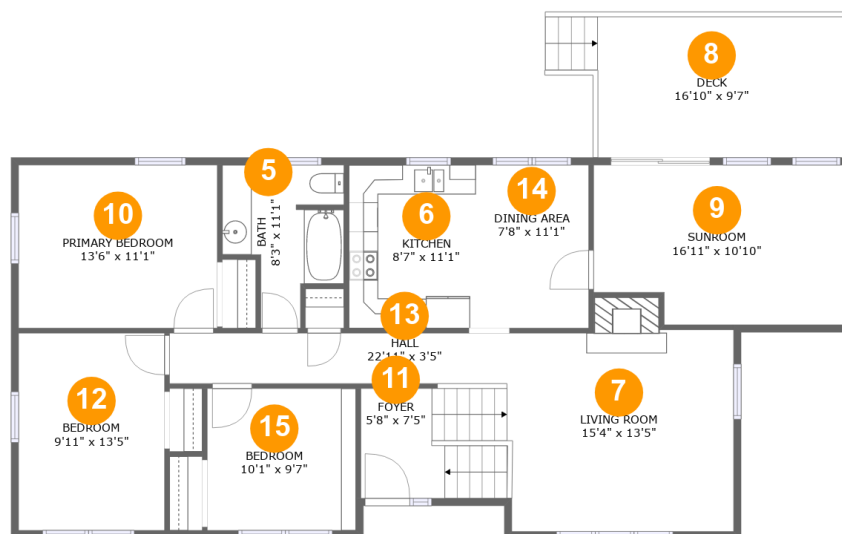
Total:669sqft

Excluded: 327sqft

#		Max Dimensions	sqft	Included
1	Utility	37'2" x 11'0"	327 sq. ft	No
2	Bedroom	22'11" x 10'11"	258 sq. ft	Yes
3	Bath	12'6" x 5'11"	73 sq. ft	Yes
4	Recreation Room	25'3" x 10'11"	247 sq. ft	Yes

## Home report

37 Pine Ridge Drive, Candia, Rockingham County, New Hampshire, United States, 03034



## Room dimensions

Floor 2

Total:1261sqft

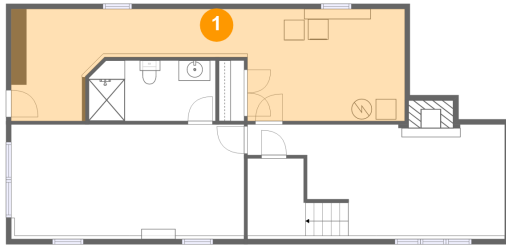
Excluded: 161sqft

#		Max Dimensions	sqft	Included
5	Bath	8'3" x 11'1"	68 sq. ft	Yes
6	Kitchen	8'7" x 11'1"	95 sq. ft	Yes
7	Living Room	15'4" x 13'5"	218 sq. ft	Yes
8	Deck	16'10" x 9'7"	161 sq. ft	No
9	Sunroom	16'11" x 10'10"	173 sq. ft	Yes
10	Primary Bedroom	13'6" x 11'1"	149 sq. ft	Yes
11	Foyer	5'8" x 7'5"	74 sq. ft	Yes
12	Bedroom	9'11" x 13'5"	133 sq. ft	Yes
13	Hall	22'11" x 3'5"	80 sq. ft	Yes
14	Dining Area	7'8" x 11'1"	85 sq. ft	Yes
15	Bedroom	10'1" x 9'7"	97 sq. ft	Yes

37 Pine Ridge Drive, Candia, Rockingham County, New Hampshire, United States, 03034

**1** Floor 1 - Utility

---



Max Dimensions: 37'2" x 11'0"  
Calculated Area: 327 sq. ft  
Included: No

Heated: Yes  
Finished: No  
Enclosed: Yes  
Contiguous: Yes  
Permitted: Yes  
Wet space: No  
Addition: No  
Conversion: No

**2** Floor 1 - Bedroom

---



Max Dimensions: 22'11" x 10'11"  
Calculated Area: 258 sq. ft  
Included: Yes

Heated: Yes  
Finished: Yes  
Enclosed: Yes  
Contiguous: Yes  
Permitted: Yes  
Wet space: No  
Addition: No  
Conversion: No

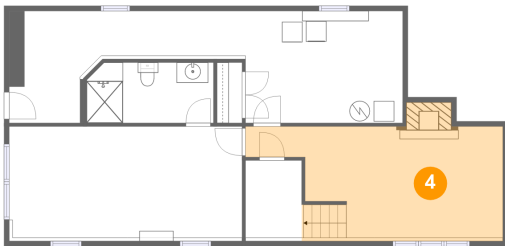
**3 Floor 1 - Bath**



Max Dimensions: 12'6" x 5'11"  
Calculated Area: 73 sq. ft  
Included: Yes

Heated: Yes  
Finished: Yes  
Enclosed: Yes  
Contiguous: Yes  
Permitted: Yes  
Wet space: Yes  
Addition: No  
Conversion: No

**4 Floor 1 - Recreation Room**



Max Dimensions: 25'3" x 10'11"  
Calculated Area: 247 sq. ft  
Included: Yes

Heated: Yes  
Finished: Yes  
Enclosed: Yes  
Contiguous: Yes  
Permitted: Yes  
Wet space: No  
Addition: No  
Conversion: No

**5 Floor 2 - Bath**

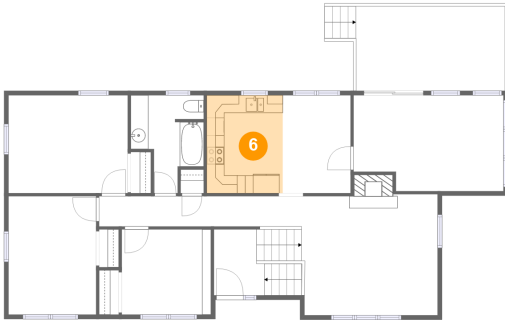


Max Dimensions: 8'3" x 11'1"  
Calculated Area: 68 sq. ft  
Included: Yes

Heated: Yes  
Finished: Yes  
Enclosed: Yes  
Contiguous: Yes  
Permitted: Yes  
Wet space: Yes  
Addition: No  
Conversion: No

37 Pine Ridge Drive, Candia, Rockingham County, New Hampshire, United States, 03034

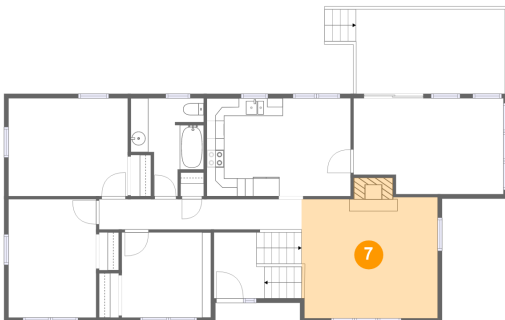
**6** Floor 2 - Kitchen



Max Dimensions: 8'7" x 11'1"  
Calculated Area: 95 sq. ft  
Included: Yes

Heated: Yes  
Finished: Yes  
Enclosed: Yes  
Contiguous: Yes  
Permitted: Yes  
Wet space: No  
Addition: No  
Conversion: No

**7** Floor 2 - Living Room



Max Dimensions: 15'4" x 13'5"  
Calculated Area: 218 sq. ft  
Included: Yes

Heated: Yes  
Finished: Yes  
Enclosed: Yes  
Contiguous: Yes  
Permitted: Yes  
Wet space: No  
Addition: No  
Conversion: No

**8** Floor 2 - Deck

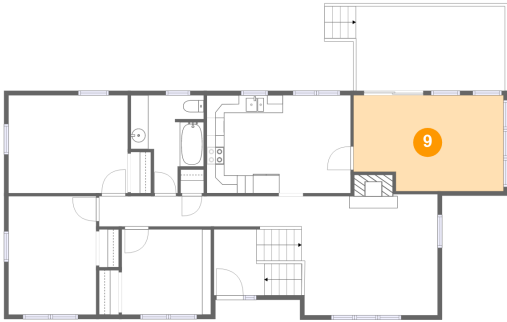


Max Dimensions: 16'10" x 9'7"  
Calculated Area: 161 sq. ft  
Included: No

Heated: No  
Finished: Yes  
Enclosed: No  
Contiguous: Yes  
Permitted: Yes  
Wet space: No  
Addition: No  
Conversion: No

37 Pine Ridge Drive, Candia, Rockingham County, New Hampshire, United States, 03034

**9** Floor 2 - Sunroom



Max Dimensions: 16'11" x 10'10"  
Calculated Area: 173 sq. ft  
Included: Yes

Heated: Yes  
Finished: Yes  
Enclosed: Yes  
Contiguous: Yes  
Permitted: Yes  
Wet space: No  
Addition: No  
Conversion: No

**10** Floor 2 - Primary Bedroom



Max Dimensions: 13'6" x 11'1"  
Calculated Area: 149 sq. ft  
Included: Yes

Heated: Yes  
Finished: Yes  
Enclosed: Yes  
Contiguous: Yes  
Permitted: Yes  
Wet space: No  
Addition: No  
Conversion: No

**11** Floor 2 - Foyer



Max Dimensions: 5'8" x 7'5"  
Calculated Area: 74 sq. ft  
Included: Yes

Heated: Yes  
Finished: Yes  
Enclosed: Yes  
Contiguous: Yes  
Permitted: Yes  
Wet space: No  
Addition: No  
Conversion: No

37 Pine Ridge Drive, Candia, Rockingham County, New Hampshire, United States, 03034

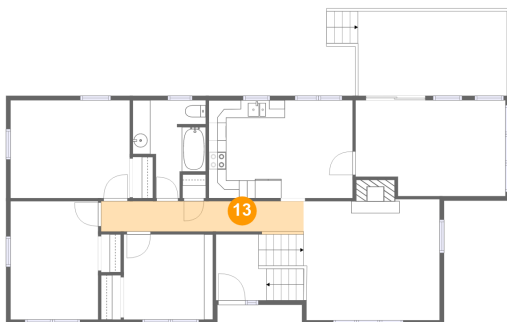
**12** Floor 2 - Bedroom



Max Dimensions: 9'11" x 13'5"  
Calculated Area: 133 sq. ft  
Included: Yes

Heated: Yes  
Finished: Yes  
Enclosed: Yes  
Contiguous: Yes  
Permitted: Yes  
Wet space: No  
Addition: No  
Conversion: No

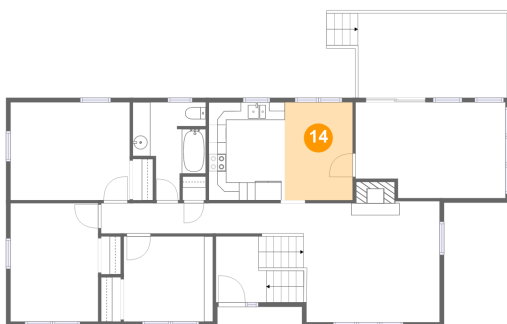
**13** Floor 2 - Hall



Max Dimensions: 22'11" x 3'5"  
Calculated Area: 80 sq. ft  
Included: Yes

Heated: Yes  
Finished: Yes  
Enclosed: Yes  
Contiguous: Yes  
Permitted: Yes  
Wet space: No  
Addition: No  
Conversion: No

**14** Floor 2 - Dining Area



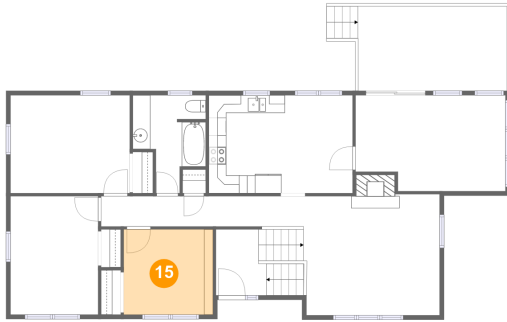
Max Dimensions: 7'8" x 11'1"  
Calculated Area: 85 sq. ft  
Included: Yes

Heated: Yes  
Finished: Yes  
Enclosed: Yes  
Contiguous: Yes  
Permitted: Yes  
Wet space: No  
Addition: No  
Conversion: No

Home report

37 Pine Ridge Drive, Candia, Rockingham County, New Hampshire, United States, 03034

**15** Floor 2 - Bedroom



Max Dimensions: 10'1" x 9'7"  
Calculated Area: 97 sq. ft  
Included: Yes

Heated: Yes  
Finished: Yes  
Enclosed: Yes  
Contiguous: Yes  
Permitted: Yes  
Wet space: No  
Addition: No  
Conversion: No