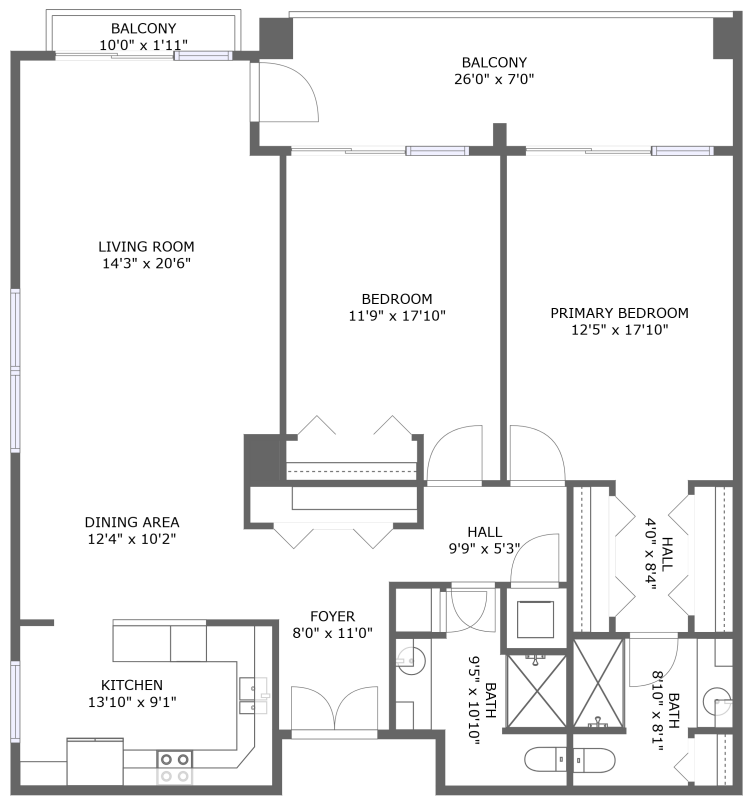


Home report

1430 Gulf Boulevard, Sand Key Club, Clearwater Beach, Pinellas County, Florida, United States, 33767, 710



FLOOR 1


Total Area: 1391 sq. ft


Floor 1: 1391 sq. ft

Excluded: Balcony 204 sq. ft, Walls: 0 sq. ft

Property summary

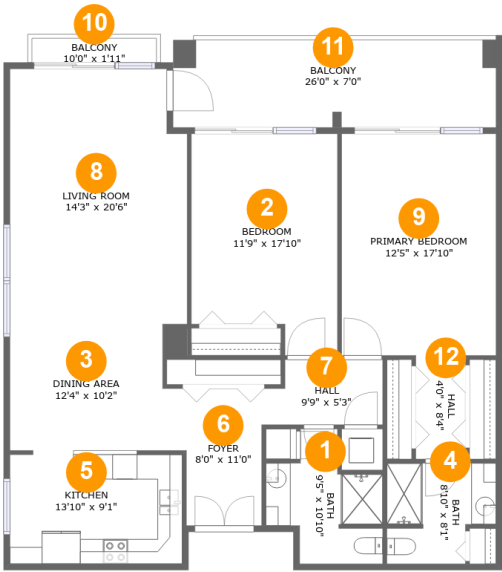
 1 Floors

 2 Bedrooms

 2 Bathrooms

Home report

1430 Gulf Boulevard, Sand Key Club, Clearwater Beach, Pinellas County, Florida, United States, 33767, 710



Room dimensions

Floor 1

Total:1391sqft

Excluded: 204sqft

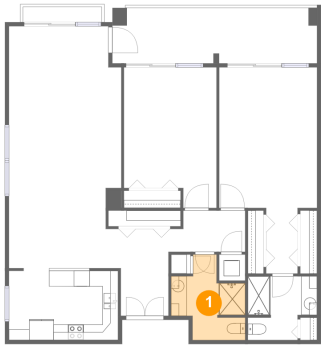
#		Max Dimensions	sqft	Included
1	Bath	9'5" x 10'10"	72 sq. ft	Yes
2	Bedroom	11'9" x 17'10"	191 sq. ft	Yes
3	Dining Area	12'4" x 10'2"	125 sq. ft	Yes
4	Bath	8'10" x 8'1"	62 sq. ft	Yes
5	Kitchen	13'10" x 9'1"	125 sq. ft	Yes
6	Foyer	8'0" x 11'0"	76 sq. ft	Yes
7	Hall	9'9" x 5'3"	47 sq. ft	Yes
8	Living Room	14'3" x 20'6"	285 sq. ft	Yes
9	Primary Bedroom	12'5" x 17'10"	222 sq. ft	Yes
10	Balcony	10'0" x 1'11"	20 sq. ft	No
11	Balcony	26'0" x 7'0"	184 sq. ft	No

Home report

1430 Gulf Boulevard, Sand Key Club, Clearwater Beach, Pinellas County, Florida, United States, 33767, 710

#		Max Dimensions	sqft	Included
12	Hall	4'0" x 8'4"	33 sq. ft	Yes

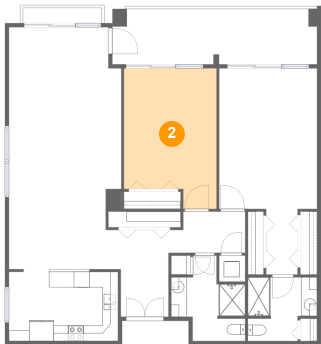
1 Floor 1 - Bath



Max Dimensions: 9'5" x 10'10"  
Calculated Area: 72 sq. ft  
Included: Yes

Heated: Yes  
Finished: Yes  
Enclosed: Yes  
Contiguous: Yes  
Permitted: Yes  
Wet space: Yes  
Addition: No  
Conversion: No

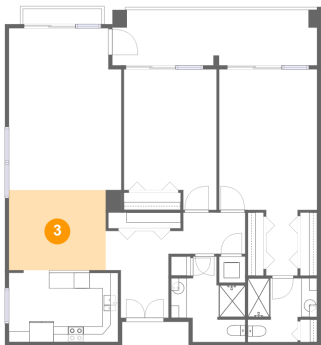
2 Floor 1 - Bedroom



Max Dimensions: 11'9" x 17'10"  
Calculated Area: 191 sq. ft  
Included: Yes

Heated: Yes  
Finished: Yes  
Enclosed: Yes  
Contiguous: Yes  
Permitted: Yes  
Wet space: No  
Addition: No  
Conversion: No

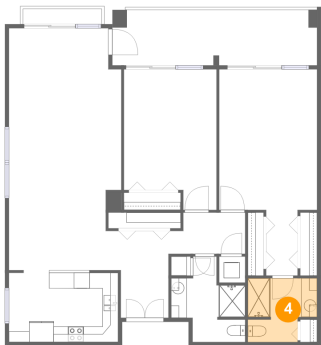
3 Floor 1 - Dining Area



Max Dimensions: 12'4" x 10'2"  
Calculated Area: 125 sq. ft  
Included: Yes

Heated: Yes  
Finished: Yes  
Enclosed: Yes  
Contiguous: Yes  
Permitted: Yes  
Wet space: No  
Addition: No  
Conversion: No

4 Floor 1 - Bath



Max Dimensions: 8'10" x 8'1"  
Calculated Area: 62 sq. ft  
Included: Yes

Heated: Yes  
Finished: Yes  
Enclosed: Yes  
Contiguous: Yes  
Permitted: Yes  
Wet space: Yes  
Addition: No  
Conversion: No

5 Floor 1 - Kitchen

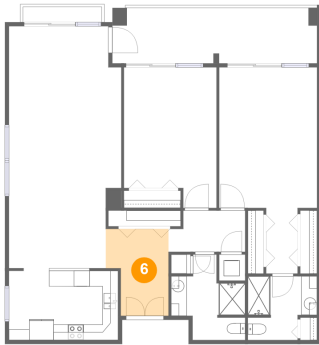


Max Dimensions: 13'10" x 9'1"  
Calculated Area: 125 sq. ft  
Included: Yes

Heated: Yes  
Finished: Yes  
Enclosed: Yes  
Contiguous: Yes  
Permitted: Yes  
Wet space: No  
Addition: No  
Conversion: No

1430 Gulf Boulevard, Sand Key Club, Clearwater Beach, Pinellas  
County, Florida, United States, 33767, 710

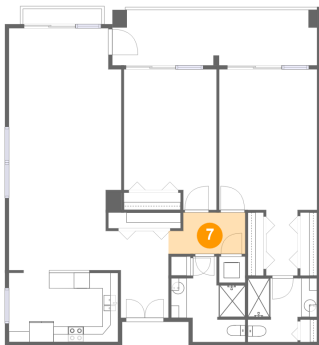
## 6 Floor 1 - Foyer



Max Dimensions: 8'0" x 11'0"  
Calculated Area: 76 sq. ft  
Included: Yes

Heated: Yes  
Finished: Yes  
Enclosed: Yes  
Contiguous: Yes  
Permitted: Yes  
Wet space: No  
Addition: No  
Conversion: No

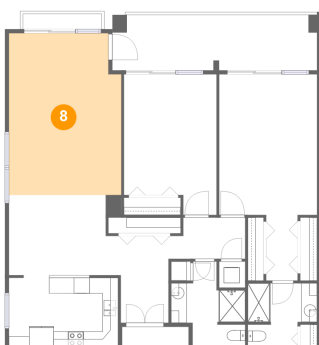
## 7 Floor 1 - Hall



Max Dimensions: 9'9" x 5'3"  
Calculated Area: 47 sq. ft  
Included: Yes

Heated: Yes  
Finished: Yes  
Enclosed: Yes  
Contiguous: Yes  
Permitted: Yes  
Wet space: No  
Addition: No  
Conversion: No

## 8 Floor 1 - Living Room



Max Dimensions: 14'3" x 20'6"  
Calculated Area: 285 sq. ft  
Included: Yes

Heated: Yes  
Finished: Yes  
Enclosed: Yes  
Contiguous: Yes  
Permitted: Yes  
Wet space: No  
Addition: No  
Conversion: No

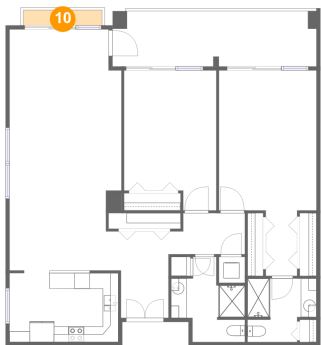
9 Floor 1 - Primary Bedroom



Max Dimensions: 12'5" x 17'10"  
Calculated Area: 222 sq. ft  
Included: Yes

Heated: Yes  
Finished: Yes  
Enclosed: Yes  
Contiguous: Yes  
Permitted: Yes  
Wet space: No  
Addition: No  
Conversion: No

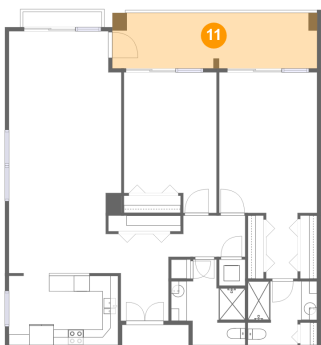
10 Floor 1 - Balcony



Max Dimensions: 10'0" x 1'11"  
Calculated Area: 20 sq. ft  
Included: No

Heated: No  
Finished: Yes  
Enclosed: No  
Contiguous: Yes  
Permitted: Yes  
Wet space: No  
Addition: No  
Conversion: No

11 Floor 1 - Balcony

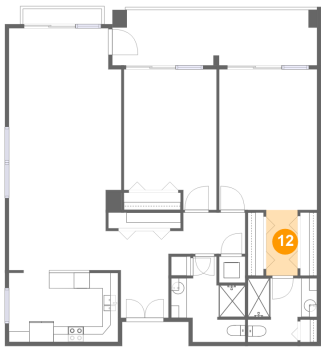


Max Dimensions: 26'0" x 7'0"  
Calculated Area: 184 sq. ft  
Included: No

Heated: No  
Finished: Yes  
Enclosed: No  
Contiguous: Yes  
Permitted: Yes  
Wet space: No  
Addition: No  
Conversion: No

1430 Gulf Boulevard, Sand Key Club, Clearwater Beach, Pinellas  
County, Florida, United States, 33767, 710

12 Floor 1 - Hall



Max Dimensions: 4'0" x 8'4"  
Calculated Area: 33 sq. ft  
Included: Yes

Heated: Yes  
Finished: Yes  
Enclosed: Yes  
Contiguous: Yes  
Permitted: Yes  
Wet space: No  
Addition: No  
Conversion: No