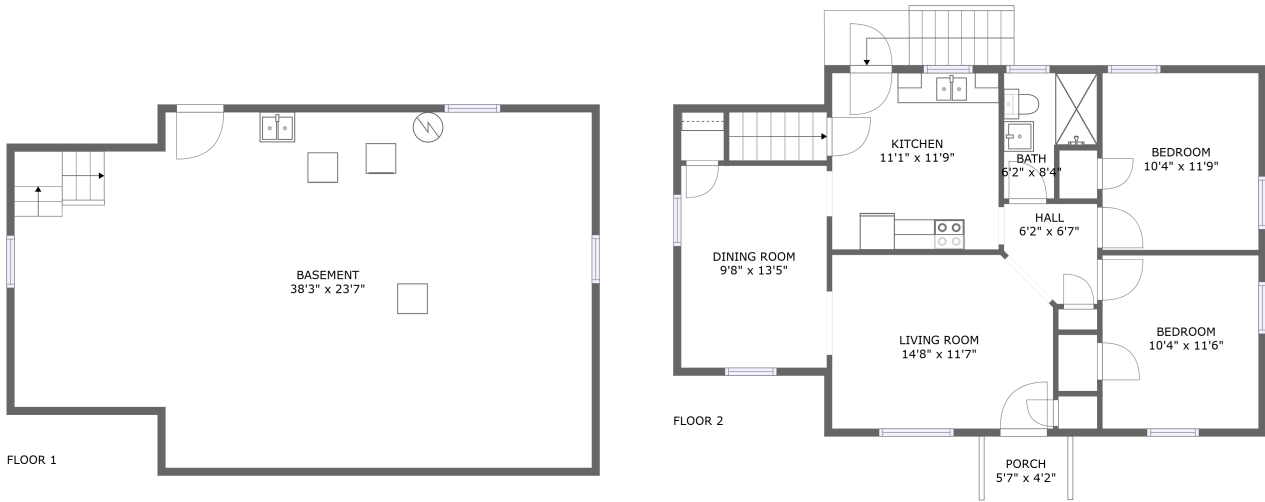



# 3646 Martinell Avenue, Castle Hill, Cave Spring, Roanoke, Roanoke County, Virginia, United



## Property summary


 **0** Garages

 **2** Bedrooms

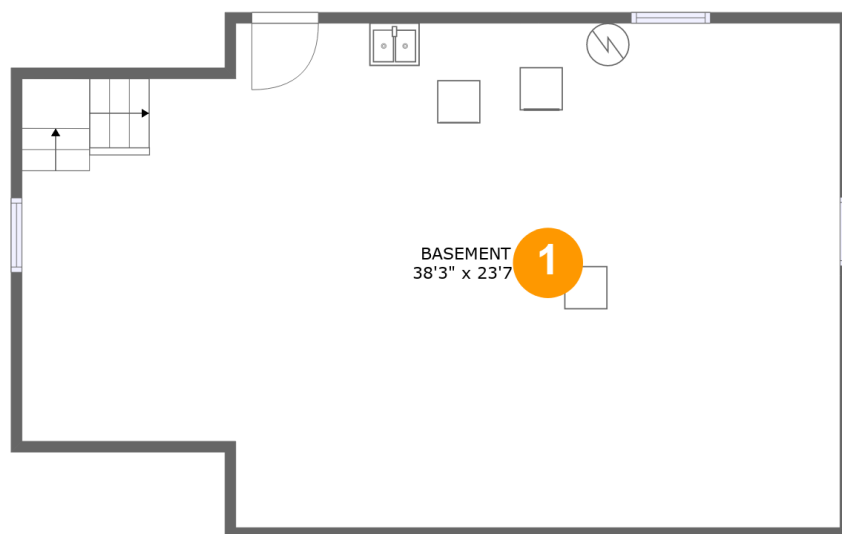
 **1** Bathrooms

 **0** Half baths

 **2** Floors

 **900** Gross living area sqft

 **1,823** Total sqft

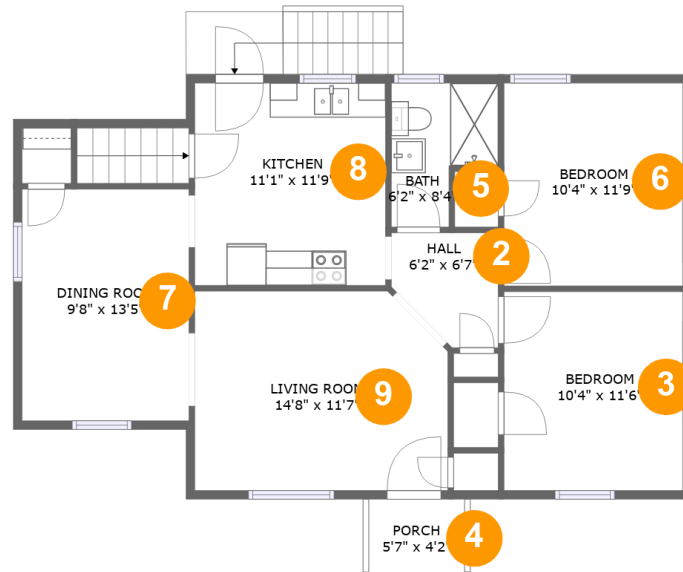
**3646 Martinell Avenue, Castle Hill, Cave Spring,  
Roanoke, Roanoke County, Virginia, United****Room dimensions**

Floor 1

Total sqft: 900 Living area: 0

#		Dimensions	sqft	Counted as living area
1	Basement	38'3" x 23'7"	837 sq. ft	No

**3646 Martinell Avenue, Castle Hill, Cave Spring, Roanoke, Roanoke County, Virginia, United**



**Room dimensions**

**Floor 2**

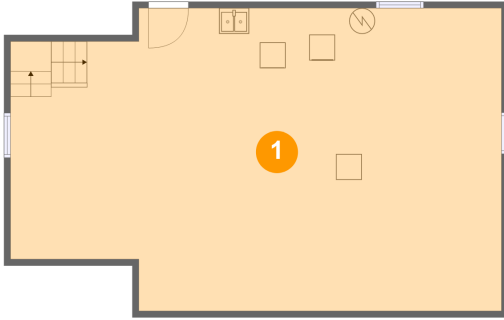
**Total sqft: 923**

**Living area: 900**

#		Dimensions	sqft	Counted as living area
2	Hall	6'2" x 6'7"	35 sq. ft	Yes
3	Bedroom	10'4" x 11'6"	119 sq. ft	Yes
4	Outdoor	5'7" x 4'2"	23 sq. ft	No
5	Bath	6'2" x 8'4"	42 sq. ft	Yes
6	Bedroom	10'4" x 11'9"	122 sq. ft	Yes
7	Dining Room	9'8" x 13'5"	130 sq. ft	Yes
8	Kitchen	11'1" x 11'9"	129 sq. ft	Yes
9	Living Room	14'8" x 11'7"	163 sq. ft	Yes

# 3646 Martinell Avenue, Castle Hill, Cave Spring, Roanoke, Roanoke County, Virginia, United

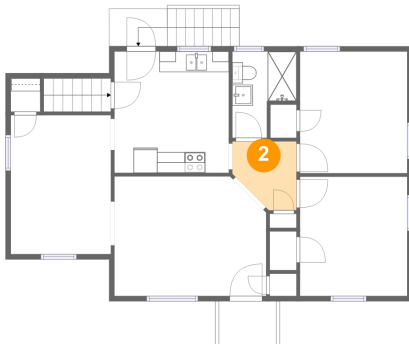
## 1 Floor 1 - Basement



Dimensions: 38'3" x 23'7"  
Area: 837 sq. ft  
Counted as living area: No

Heated: Yes  
Finished: No  
Enclosed: Yes  
Contiguous: Yes  
Permitted: Yes  
Wet space: No  
Addition: No  
Conversion: No

## 2 Floor 2 - Hall

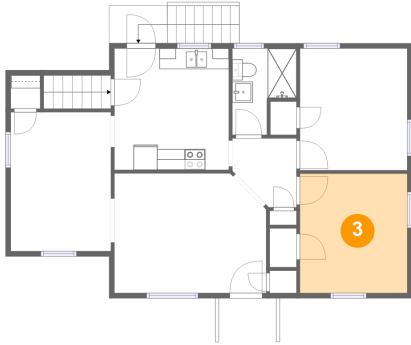


Dimensions: 6'2" x 6'7"  
Area: 35 sq. ft  
Counted as living area: Yes

Heated: Yes  
Finished: Yes  
Enclosed: Yes  
Contiguous: Yes  
Permitted: Yes  
Wet space: No  
Addition: No  
Conversion: No

# 3646 Martinell Avenue, Castle Hill, Cave Spring, Roanoke, Roanoke County, Virginia, United

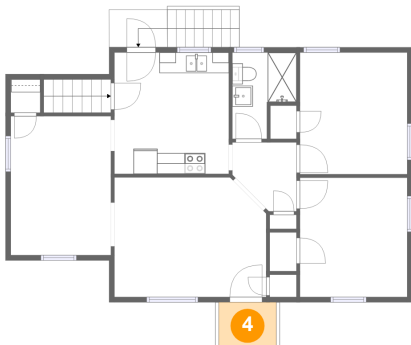
## 3 Floor 2 - Bedroom



Dimensions: 10'4" x 11'6"  
Area: 119 sq. ft  
Counted as living area: Yes

Heated: Yes  
Finished: Yes  
Enclosed: Yes  
Contiguous: Yes  
Permitted: Yes  
Wet space: No  
Addition: No  
Conversion: No

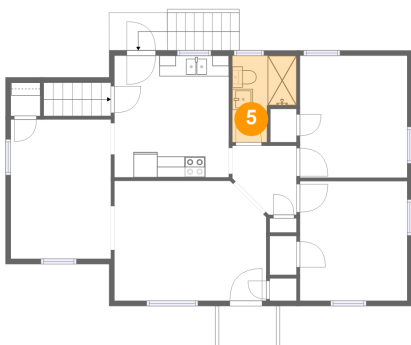
## 4 Floor 2 - Outdoor



Dimensions: 5'7" x 4'2"  
Area: 23 sq. ft  
Counted as living area: No

Heated: No  
Finished: Yes  
Enclosed: No  
Contiguous: Yes  
Permitted: Yes  
Wet space: No  
Addition: No  
Conversion: No

## 5 Floor 2 - Bath

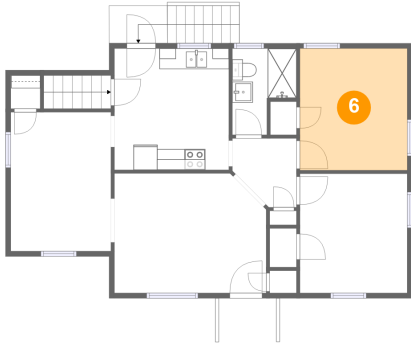


Dimensions: 6'2" x 8'4"  
Area: 42 sq. ft  
Counted as living area: Yes

Heated: Yes  
Finished: Yes  
Enclosed: Yes  
Contiguous: Yes  
Permitted: Yes  
Wet space: Yes  
Addition: No  
Conversion: No

# 3646 Martinell Avenue, Castle Hill, Cave Spring, Roanoke, Roanoke County, Virginia, United

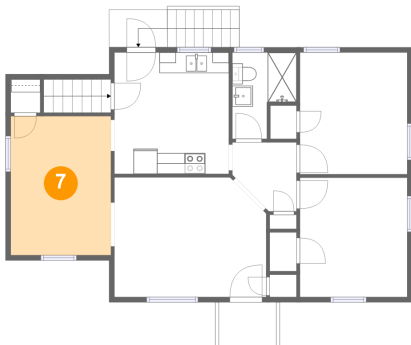
## 6 Floor 2 - Bedroom



Dimensions: 10'4" x 11'9"  
Area: 122 sq. ft  
Counted as living area: Yes

Heated: Yes  
Finished: Yes  
Enclosed: Yes  
Contiguous: Yes  
Permitted: Yes  
Wet space: No  
Addition: No  
Conversion: No

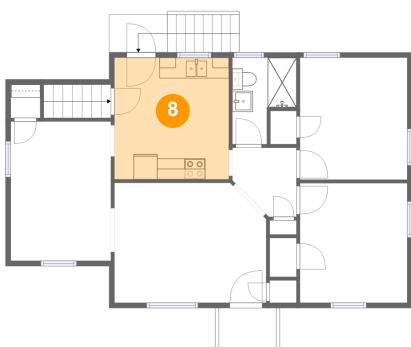
## 7 Floor 2 - Dining Room



Dimensions: 9'8" x 13'5"  
Area: 130 sq. ft  
Counted as living area: Yes

Heated: Yes  
Finished: Yes  
Enclosed: Yes  
Contiguous: Yes  
Permitted: Yes  
Wet space: No  
Addition: No  
Conversion: No

## 8 Floor 2 - Kitchen

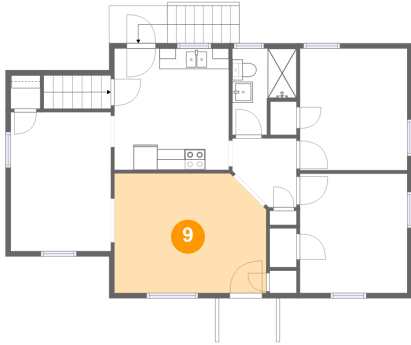


Dimensions: 11'1" x 11'9"  
Area: 129 sq. ft  
Counted as living area: Yes

Heated: Yes  
Finished: Yes  
Enclosed: Yes  
Contiguous: Yes  
Permitted: Yes  
Wet space: No  
Addition: No  
Conversion: No

**3646 Martinell Avenue, Castle Hill, Cave Spring,  
Roanoke, Roanoke County, Virginia, United**

**9 Floor 2 - Living Room**



**Dimensions:** 14'8" x 11'7"  
**Area:** 163 sq. ft  
**Counted as living area:** Yes

**Heated:** Yes  
**Finished:** Yes  
**Enclosed:** Yes  
**Contiguous:** Yes  
**Permitted:** Yes  
**Wet space:** No  
**Addition:** No  
**Conversion:** No