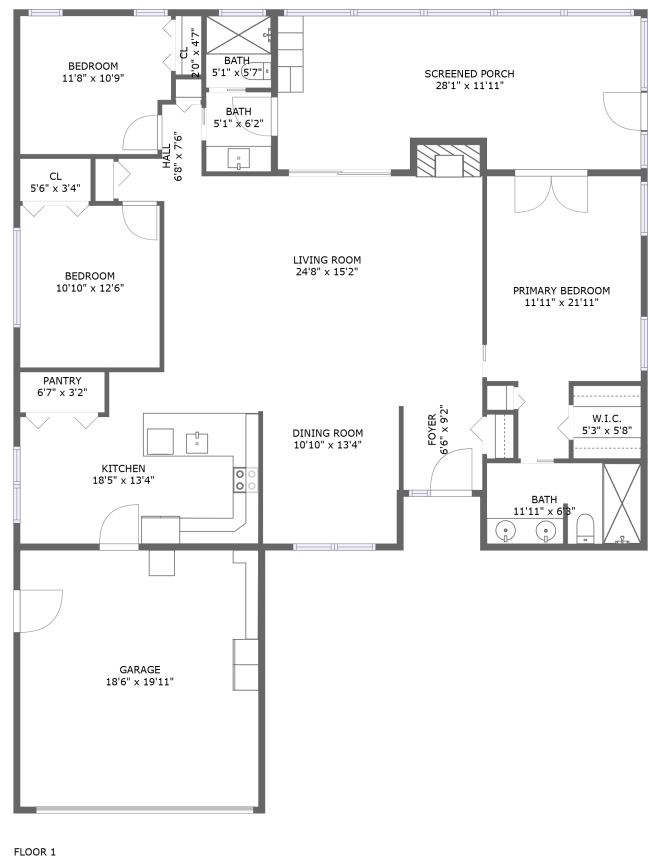




Home report


4765 Lake Valencia Boulevard West, Lake Valencia, Palm Harbor, Pinellas County, Florida, United States, 34684




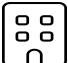
Property summary


 **1** Garages


 **3** Bedrooms

 **2** Bathrooms

 **0** Half baths

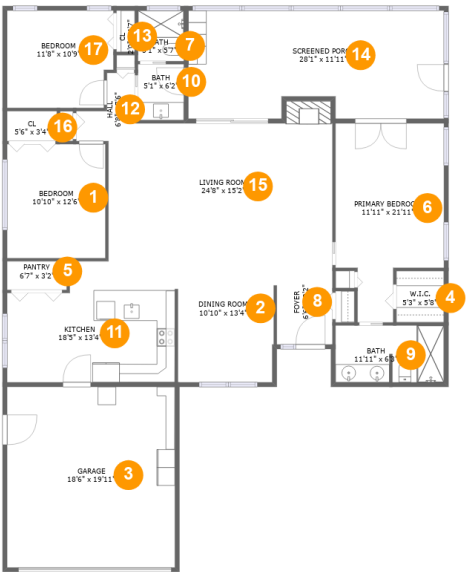
 **1** Floors

 **1,677** Gross living area sqft

 **2,430** Total sqft

Home report

4765 Lake Valencia Boulevard West, Lake Valencia, Palm Harbor, Pinellas County, Florida, United States, 34684



Room dimensions

Floor 1 Total sqft: 2430 Living area: 1677

#		Dimensions	sqft	Counted as living area
1	Bedroom	10'10" x 12'6"	136 sq. ft	Yes
2	Dining Room	10'10" x 13'4"	141 sq. ft	Yes
3	Garage	18'6" x 19'11"	367 sq. ft	No
4	W.I.C.	5'3" x 5'8"	30 sq. ft	Yes
5	Pantry	6'7" x 3'2"	21 sq. ft	Yes
6	Primary Bedroom	11'11" x 21'11"	213 sq. ft	Yes
7	Bath	5'1" x 5'7"	28 sq. ft	Yes
8	Foyer	6'6" x 9'2"	57 sq. ft	Yes
9	Bath	11'11" x 6'3"	74 sq. ft	Yes
10	Bath	5'1" x 6'2"	31 sq. ft	Yes
11	Kitchen	18'5" x 13'4"	222 sq. ft	Yes

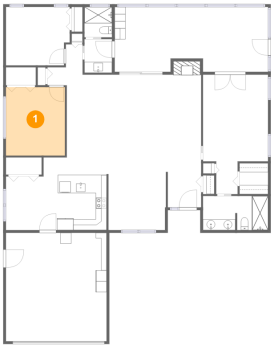
Home report

4765 Lake Valencia Boulevard West, Lake Valencia, Palm Harbor, Pinellas County, Florida, United States, 34684

#		Dimensions	sqft	Counted as living area
12	Hall	6'8" x 7'6"	35 sq. ft	Yes
13	Cl	2'0" x 4'7"	9 sq. ft	Yes
14	Screened Porch	28'1" x 11'11"	321 sq. ft	No
15	Living Room	24'8" x 15'2"	381 sq. ft	Yes
16	Cl	5'6" x 3'4"	18 sq. ft	Yes
17	Bedroom	11'8" x 10'9"	121 sq. ft	Yes

4765 Lake Valencia Boulevard West, Lake Valencia, Palm Harbor, Pinellas County, Florida, United States, 34684

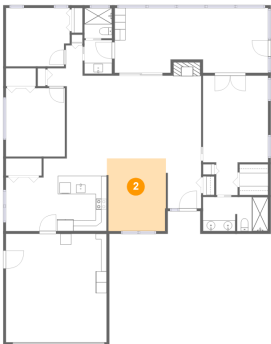
1 Floor 1 - Bedroom



Dimensions: 10'10" x 12'6"
Area: 136 sq. ft
Counted as living area: Yes

Heated: Yes
Finished: Yes
Enclosed: Yes
Contiguous: Yes
Permitted: Yes
Wet space: No
Addition: No
Conversion: No

2 Floor 1 - Dining Room



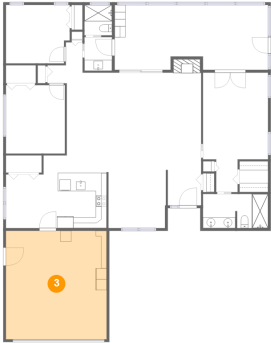
Dimensions: 10'10" x 13'4"
Area: 141 sq. ft
Counted as living area: Yes

Heated: Yes
Finished: Yes
Enclosed: Yes
Contiguous: Yes
Permitted: Yes
Wet space: No
Addition: No
Conversion: No

Home report

4765 Lake Valencia Boulevard West, Lake Valencia, Palm Harbor, Pinellas County, Florida, United States, 34684

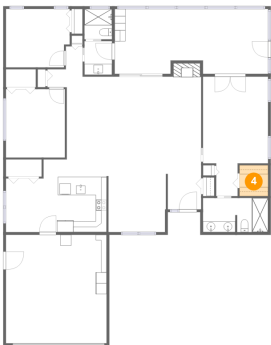
3 Floor 1 - Garage



Dimensions: 18'6" x 19'11"
Area: 367 sq. ft
Counted as living area: No

Heated: No
Finished: No
Enclosed: Yes
Contiguous: Yes
Permitted: Yes
Wet space: No
Addition: No
Conversion: No

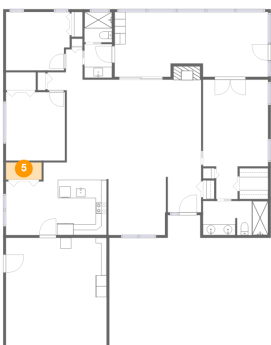
4 Floor 1 - W.I.C.



Dimensions: 5'3" x 5'8"
Area: 30 sq. ft
Counted as living area: Yes

Heated: Yes
Finished: Yes
Enclosed: Yes
Contiguous: Yes
Permitted: Yes
Wet space: No
Addition: No
Conversion: No

5 Floor 1 - Pantry

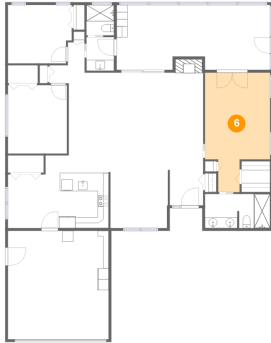


Dimensions: 6'7" x 3'2"
Area: 21 sq. ft
Counted as living area: Yes

Heated: Yes
Finished: Yes
Enclosed: Yes
Contiguous: Yes
Permitted: Yes
Wet space: No
Addition: No
Conversion: No

4765 Lake Valencia Boulevard West, Lake Valencia, Palm Harbor, Pinellas County, Florida, United States, 34684

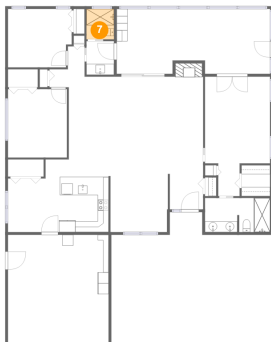
6 Floor 1 - Primary Bedroom



Dimensions: 11'11" x 21'11"
Area: 213 sq. ft
Counted as living area: Yes

Heated: Yes
Finished: Yes
Enclosed: Yes
Contiguous: Yes
Permitted: Yes
Wet space: No
Addition: No
Conversion: No

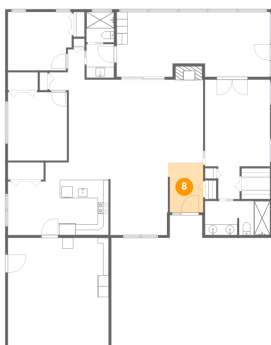
7 Floor 1 - Bath



Dimensions: 5'1" x 5'7"
Area: 28 sq. ft
Counted as living area: Yes

Heated: Yes
Finished: Yes
Enclosed: Yes
Contiguous: Yes
Permitted: Yes
Wet space: Yes
Addition: No
Conversion: No

8 Floor 1 - Foyer

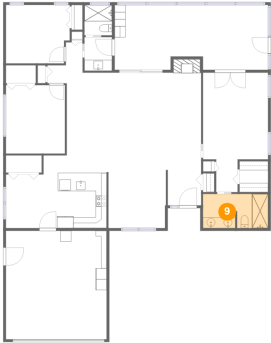


Dimensions: 6'6" x 9'2"
Area: 57 sq. ft
Counted as living area: Yes

Heated: Yes
Finished: Yes
Enclosed: Yes
Contiguous: Yes
Permitted: Yes
Wet space: No
Addition: No
Conversion: No

4765 Lake Valencia Boulevard West, Lake Valencia, Palm Harbor, Pinellas County, Florida, United States, 34684

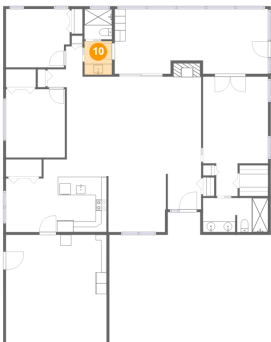
9 Floor 1 - Bath



Dimensions: 11'11" x 6'3"
Area: 74 sq. ft
Counted as living area: Yes

Heated: Yes
Finished: Yes
Enclosed: Yes
Contiguous: Yes
Permitted: Yes
Wet space: Yes
Addition: No
Conversion: No

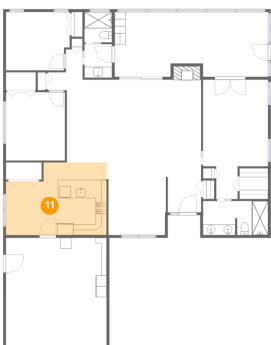
10 Floor 1 - Bath



Dimensions: 5'1" x 6'2"
Area: 31 sq. ft
Counted as living area: Yes

Heated: Yes
Finished: Yes
Enclosed: Yes
Contiguous: Yes
Permitted: Yes
Wet space: Yes
Addition: No
Conversion: No

11 Floor 1 - Kitchen

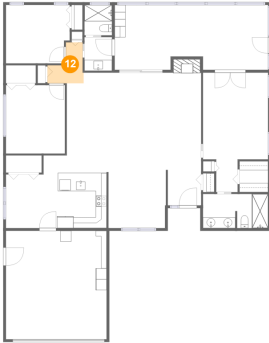


Dimensions: 18'5" x 13'4"
Area: 222 sq. ft
Counted as living area: Yes

Heated: Yes
Finished: Yes
Enclosed: Yes
Contiguous: Yes
Permitted: Yes
Wet space: No
Addition: No
Conversion: No

4765 Lake Valencia Boulevard West, Lake Valencia, Palm Harbor, Pinellas County, Florida, United States, 34684

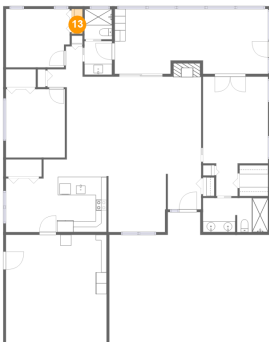
12 Floor 1 - Hall



Dimensions: 6'8" x 7'6"
Area: 35 sq. ft
Counted as living area: Yes

Heated: Yes
Finished: Yes
Enclosed: Yes
Contiguous: Yes
Permitted: Yes
Wet space: No
Addition: No
Conversion: No

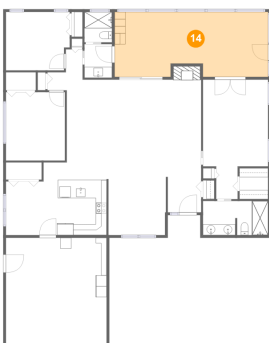
13 Floor 1 - Cl



Dimensions: 2'0" x 4'7"
Area: 9 sq. ft
Counted as living area: Yes

Heated: Yes
Finished: Yes
Enclosed: Yes
Contiguous: Yes
Permitted: Yes
Wet space: No
Addition: No
Conversion: No

14 Floor 1 - Screened Porch

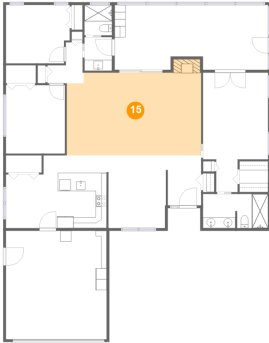


Dimensions: 28'1" x 11'11"
Area: 321 sq. ft
Counted as living area: No

Heated: No
Finished: Yes
Enclosed: No
Contiguous: Yes
Permitted: Yes
Wet space: No
Addition: No
Conversion: No

4765 Lake Valencia Boulevard West, Lake Valencia, Palm Harbor, Pinellas County, Florida, United States, 34684

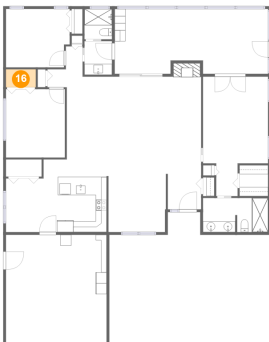
15 Floor 1 - Living Room



Dimensions: 24'8" x 15'2"
Area: 381 sq. ft
Counted as living area: Yes

Heated: Yes
Finished: Yes
Enclosed: Yes
Contiguous: Yes
Permitted: Yes
Wet space: No
Addition: No
Conversion: No

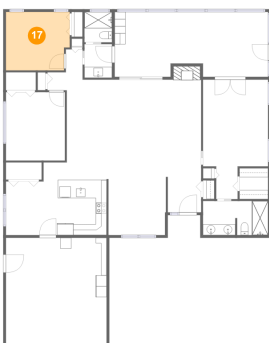
16 Floor 1 - Cl



Dimensions: 5'6" x 3'4"
Area: 18 sq. ft
Counted as living area: Yes

Heated: Yes
Finished: Yes
Enclosed: Yes
Contiguous: Yes
Permitted: Yes
Wet space: No
Addition: No
Conversion: No

17 Floor 1 - Bedroom



Dimensions: 11'8" x 10'9"
Area: 121 sq. ft
Counted as living area: Yes

Heated: Yes
Finished: Yes
Enclosed: Yes
Contiguous: Yes
Permitted: Yes
Wet space: No
Addition: No
Conversion: No