

Home report

2317 Laura Road Northwest, Peachtree, Roanoke, Roanoke city,
Virginia, United States, 24017



Total Area: 1106 sq. ft
Below Ground: 1104 sq. ft, Floor 2: 1106 sq. ft
Excluded: Fireplace 11 sq. ft, Porch 105 sq. ft, Back deck 515 sq. ft, Walls: 140 sq. ft

Property summary

 **2** Floors

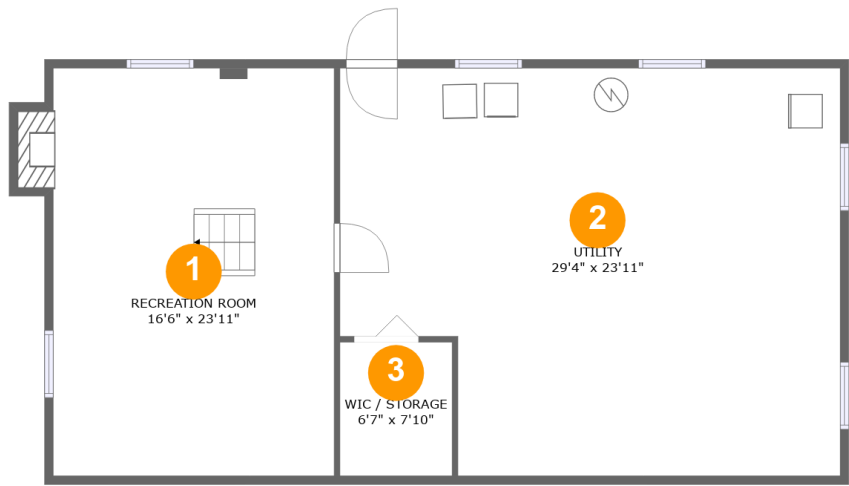
 **3** Bedrooms

 **1** Bathrooms

 **1** Half baths

Home report

2317 Laura Road Northwest, Peachtree, Roanoke, Roanoke city,
Virginia, United States, 24017



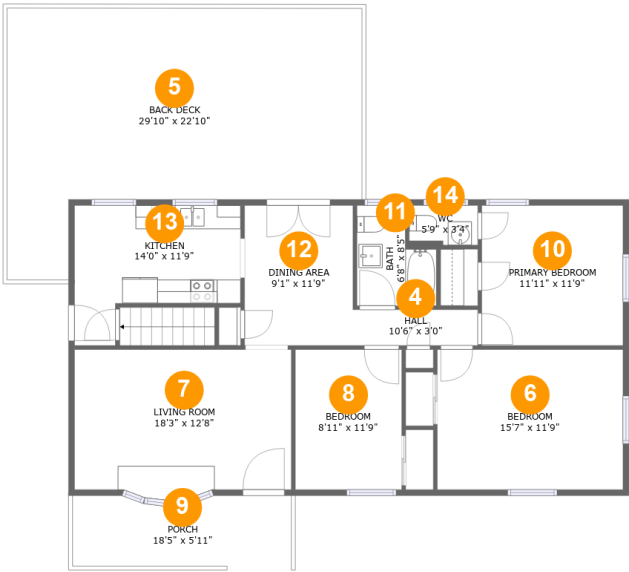
Room dimensions

Floor 1 Below ground Total:1104sqft Excluded: 11sqft

#		Max Dimensions	sqft	Included
1	Recreation Room	16'6" x 23'11"	403 sq. ft	Yes
2	Utility	29'4" x 23'11"	644 sq. ft	Yes
3	Wic / Storage	6'7" x 7'10"	52 sq. ft	Yes

Home report

2317 Laura Road Northwest, Peachtree, Roanoke, Roanoke city,
Virginia, United States, 24017



Room dimensions

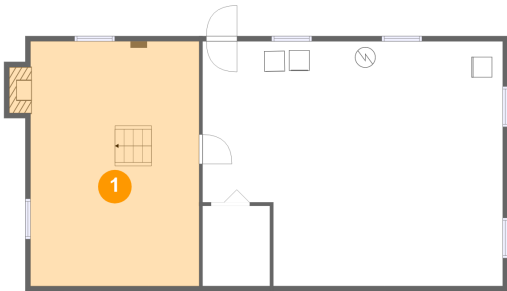
Floor 2

Total:1106sqft

Excluded: 620sqft

#		Max Dimensions	sqft	Included
4	Hall	10'6" x 3'0"	32 sq. ft	Yes
5	Back Deck	29'10" x 22'10"	515 sq. ft	No
6	Bedroom	15'7" x 11'9"	184 sq. ft	Yes
7	Living Room	18'3" x 12'8"	219 sq. ft	Yes
8	Bedroom	8'11" x 11'9"	105 sq. ft	Yes
9	Porch	18'5" x 5'11"	105 sq. ft	No
10	Primary Bedroom	11'11" x 11'9"	140 sq. ft	Yes
11	Bath	6'8" x 8'5"	47 sq. ft	Yes
12	Dining Area	9'1" x 11'9"	107 sq. ft	Yes
13	Kitchen	14'0" x 11'9"	127 sq. ft	Yes
14	WC	5'9" x 3'4"	19 sq. ft	Yes

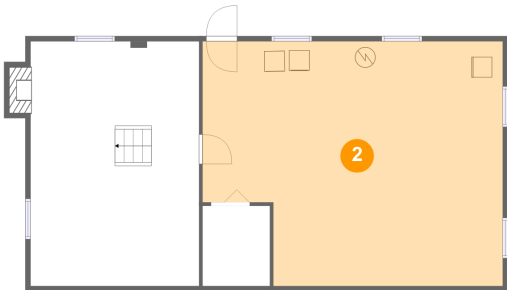
1 Floor 1 - Recreation Room



Max Dimensions: 16'6" x 23'11"
Calculated Area: 403 sq. ft
Included: Yes

Heated: Yes
Finished: Yes
Enclosed: Yes
Contiguous: Yes
Permitted: Yes
Wet space: No
Addition: No
Conversion: No

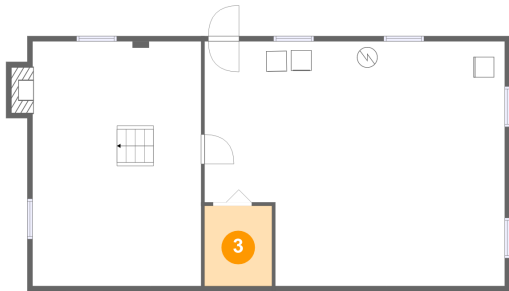
2 Floor 1 - Utility



Max Dimensions: 29'4" x 23'11"
Calculated Area: 644 sq. ft
Included: Yes

Heated: Yes
Finished: Yes
Enclosed: Yes
Contiguous: Yes
Permitted: Yes
Wet space: No
Addition: No
Conversion: No

3 Floor 1 - Wic / Storage



Max Dimensions: 6'7" x 7'10"
Calculated Area: 52 sq. ft
Included: Yes

Heated: Yes
Finished: Yes
Enclosed: Yes
Contiguous: Yes
Permitted: Yes
Wet space: No
Addition: No
Conversion: No

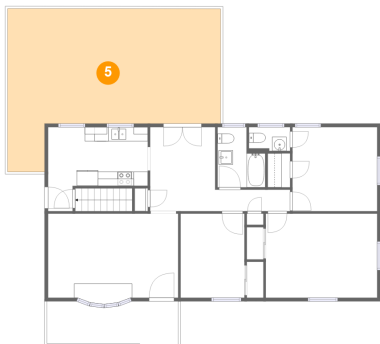
4 Floor 2 - Hall



Max Dimensions: 10'6" x 3'0"
Calculated Area: 32 sq. ft
Included: Yes

Heated: Yes
Finished: Yes
Enclosed: Yes
Contiguous: Yes
Permitted: Yes
Wet space: No
Addition: No
Conversion: No

5 Floor 2 - Back Deck

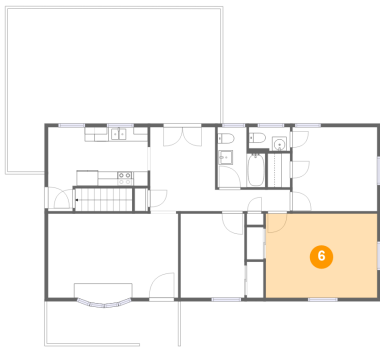


Max Dimensions: 29'10" x 22'10"
Calculated Area: 515 sq. ft
Included: No

Heated: No
Finished: Yes
Enclosed: No
Contiguous: No
Permitted: Yes
Wet space: No
Addition: No
Conversion: No

2317 Laura Road Northwest, Peachtree, Roanoke, Roanoke city,
Virginia, United States, 24017

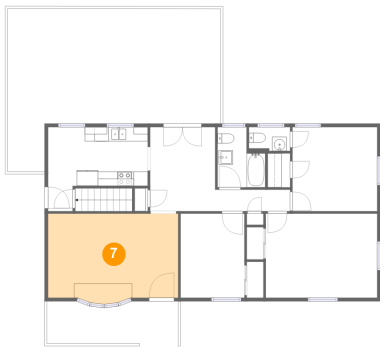
6 Floor 2 - Bedroom



Max Dimensions: 15'7" x 11'9"
Calculated Area: 184 sq. ft
Included: Yes

Heated: Yes
Finished: Yes
Enclosed: Yes
Contiguous: Yes
Permitted: Yes
Wet space: No
Addition: No
Conversion: No

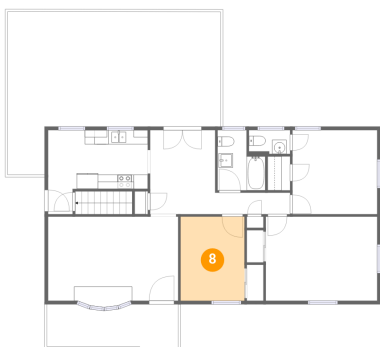
7 Floor 2 - Living Room



Max Dimensions: 18'3" x 12'8"
Calculated Area: 219 sq. ft
Included: Yes

Heated: Yes
Finished: Yes
Enclosed: Yes
Contiguous: Yes
Permitted: Yes
Wet space: No
Addition: No
Conversion: No

8 Floor 2 - Bedroom



Max Dimensions: 8'11" x 11'9"
Calculated Area: 105 sq. ft
Included: Yes

Heated: Yes
Finished: Yes
Enclosed: Yes
Contiguous: Yes
Permitted: Yes
Wet space: No
Addition: No
Conversion: No

9 Floor 2 - Porch



Max Dimensions: 18'5" x 5'11"
Calculated Area: 105 sq. ft
Included: No

Heated: No
Finished: Yes
Enclosed: No
Contiguous: Yes
Permitted: Yes
Wet space: No
Addition: No
Conversion: No

10 Floor 2 - Primary Bedroom



Max Dimensions: 11'11" x 11'9"
Calculated Area: 140 sq. ft
Included: Yes

Heated: Yes
Finished: Yes
Enclosed: Yes
Contiguous: Yes
Permitted: Yes
Wet space: No
Addition: No
Conversion: No

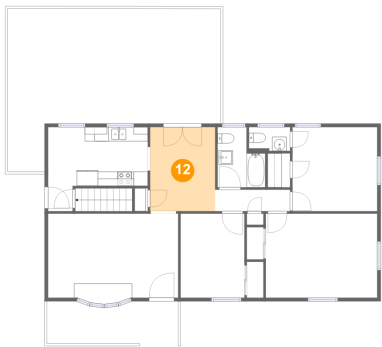
11 Floor 2 - Bath



Max Dimensions: 6'8" x 8'5"
Calculated Area: 47 sq. ft
Included: Yes

Heated: Yes
Finished: Yes
Enclosed: Yes
Contiguous: Yes
Permitted: Yes
Wet space: Yes
Addition: No
Conversion: No

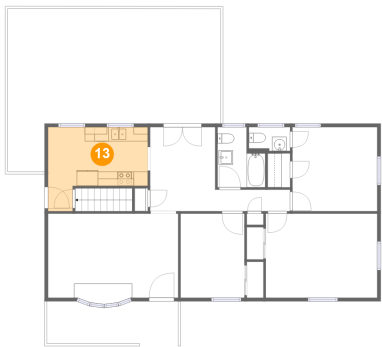
12 Floor 2 - Dining Area



Max Dimensions: 9'1" x 11'9"
Calculated Area: 107 sq. ft
Included: Yes

Heated: Yes
Finished: Yes
Enclosed: Yes
Contiguous: Yes
Permitted: Yes
Wet space: No
Addition: No
Conversion: No

13 Floor 2 - Kitchen



Max Dimensions: 14'0" x 11'9"
Calculated Area: 127 sq. ft
Included: Yes

Heated: Yes
Finished: Yes
Enclosed: Yes
Contiguous: Yes
Permitted: Yes
Wet space: No
Addition: No
Conversion: No

14 Floor 2 - WC



Max Dimensions: 5'9" x 3'4"
Calculated Area: 19 sq. ft
Included: Yes

Heated: Yes
Finished: Yes
Enclosed: Yes
Contiguous: Yes
Permitted: Yes
Wet space: Yes
Addition: No
Conversion: No