


Home report


200 Diamond Road, Homeplace, Salem, Salem city, Virginia,
United States, 24153




Property summary




1
Garages




4
Bedrooms




3
Bathrooms




0
Half baths



3
Floors



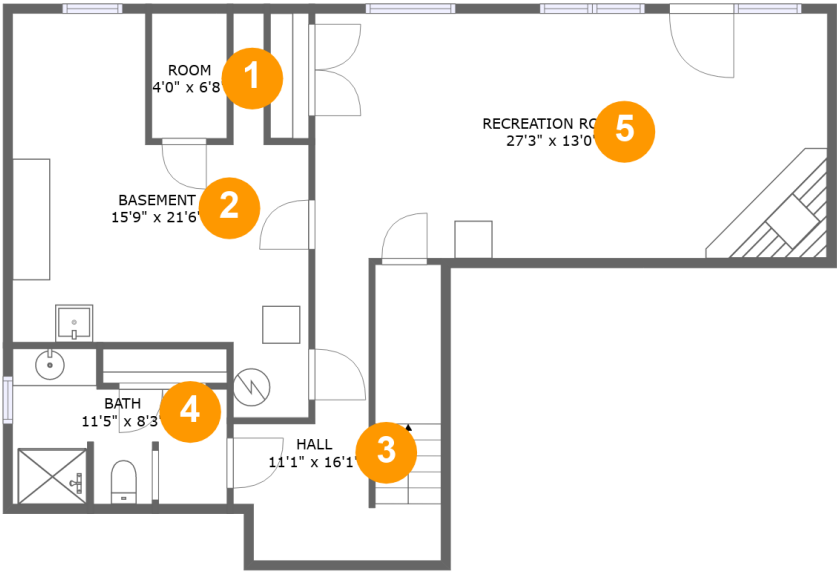
3,140
Gross living area sqft



4,292
Total sqft

Home report

200 Diamond Road, Homeplace, Salem, Salem city, Virginia,
United States, 24153



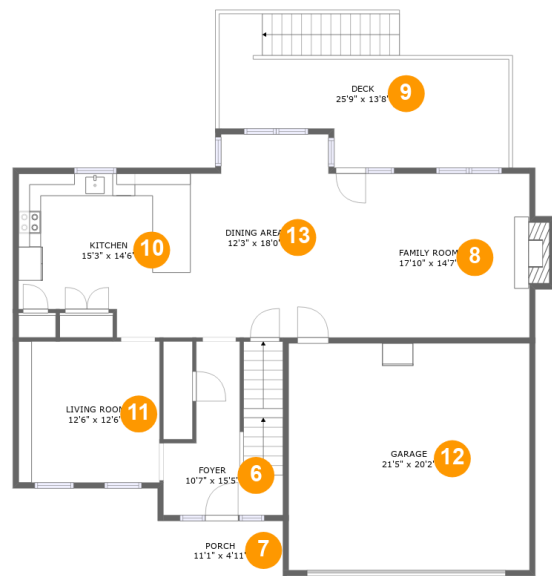
Room dimensions

Floor 1 Total sqft: 964 Living area: 674

#		Dimensions	sqft	Counted as living area
1	Room	4'0" x 6'8"	27 sq. ft	No
2	Basement	15'9" x 21'6"	242 sq. ft	No
3	Hall	11'1" x 16'1"	130 sq. ft	Yes
4	Bath	11'5" x 8'3"	78 sq. ft	Yes
5	Recreation Room	27'3" x 13'0"	354 sq. ft	Yes

Home report

200 Diamond Road, Homeplace, Salem, Salem city, Virginia,
United States, 24153



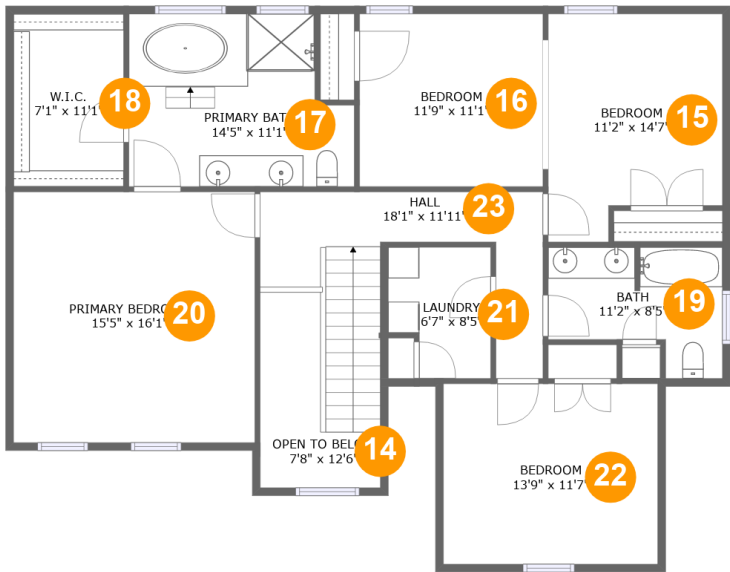
Room dimensions

Floor 2 Total sqft: 1900 Living area: 1107

#		Dimensions	sqft	Counted as living area
6	Foyer	10'7" x 15'5"	135 sq. ft	Yes
7	Porch	11'1" x 4'11"	55 sq. ft	No
8	Family Room	17'10" x 14'7"	270 sq. ft	Yes
9	Deck	25'9" x 13'8"	273 sq. ft	No
10	Kitchen	15'3" x 14'6"	200 sq. ft	Yes
11	Living Room	12'6" x 12'6"	157 sq. ft	Yes
12	Garage	21'5" x 20'2"	431 sq. ft	No
13	Dining Area	12'3" x 18'0"	212 sq. ft	Yes

Home report

200 Diamond Road, Homeplace, Salem, Salem city, Virginia,
United States, 24153



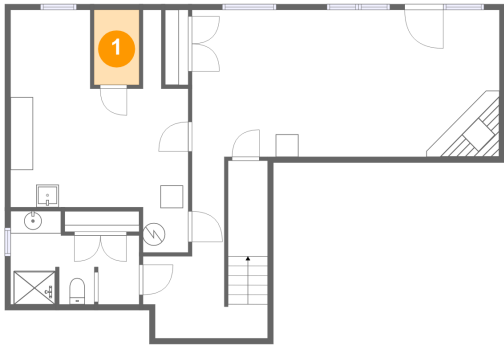
Room dimensions

Floor 3 Total sqft: 1428 Living area: 1359

#		Dimensions	sqft	Counted as living area
14	Open To Below	7'8" x 12'6"	62 sq. ft	No
15	Bedroom	11'2" x 14'7"	146 sq. ft	Yes
16	Bedroom	11'9" x 11'1"	130 sq. ft	Yes
17	Primary Bath	14'5" x 11'1"	145 sq. ft	Yes
18	W.I.C.	7'1" x 11'1"	78 sq. ft	Yes
19	Bath	11'2" x 8'5"	74 sq. ft	Yes
20	Primary Bedroom	15'5" x 16'1"	248 sq. ft	Yes
21	Laundry	6'7" x 8'5"	49 sq. ft	Yes
22	Bedroom	13'9" x 11'7"	158 sq. ft	Yes
23	Hall	18'1" x 11'11"	144 sq. ft	Yes

200 Diamond Road, Homeplace, Salem, Salem city, Virginia,
United States, 24153

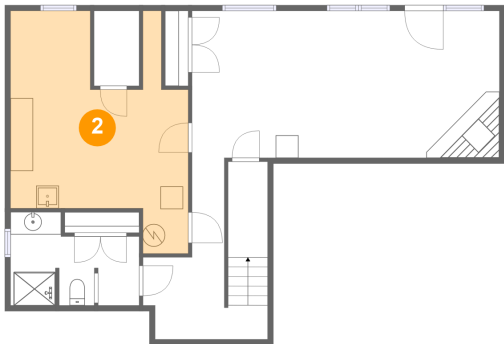
1 Floor 1 - Room



Dimensions: 4'0" x 6'8"
Area: 27 sq. ft
Counted as living area: No

Heated: Yes
Finished: Yes
Enclosed: Yes
Contiguous: No
Permitted: Yes
Wet space: No
Addition: No
Conversion: No

2 Floor 1 - Basement



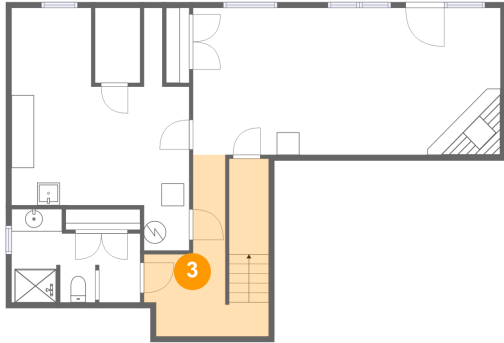
Dimensions: 15'9" x 21'6"
Area: 242 sq. ft
Counted as living area: No

Heated: Yes
Finished: No
Enclosed: Yes
Contiguous: Yes
Permitted: Yes
Wet space: No
Addition: No
Conversion: No

Home report

200 Diamond Road, Homeplace, Salem, Salem city, Virginia,
United States, 24153

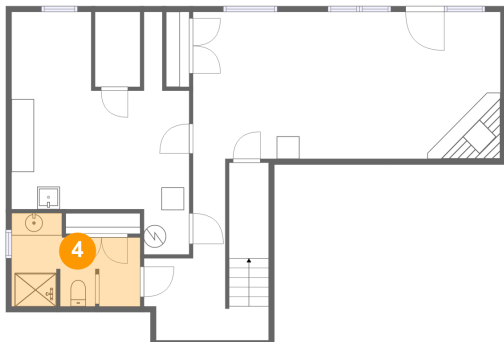
3 Floor 1 - Hall



Dimensions: 11'1" x 16'1"
Area: 130 sq. ft
Counted as living area: Yes

Heated: Yes
Finished: Yes
Enclosed: Yes
Contiguous: Yes
Permitted: Yes
Wet space: No
Addition: No
Conversion: No

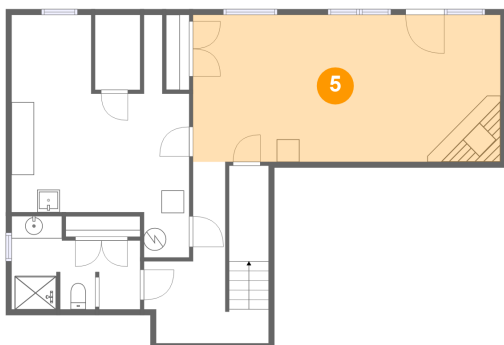
4 Floor 1 - Bath



Dimensions: 11'5" x 8'3"
Area: 78 sq. ft
Counted as living area: Yes

Heated: Yes
Finished: Yes
Enclosed: Yes
Contiguous: Yes
Permitted: Yes
Wet space: Yes
Addition: No
Conversion: No

5 Floor 1 - Recreation Room



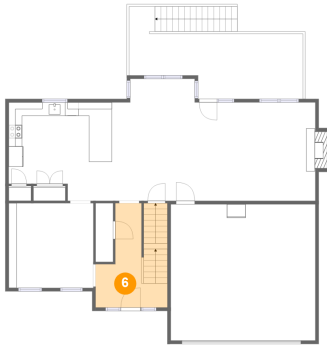
Dimensions: 27'3" x 13'0"
Area: 354 sq. ft
Counted as living area: Yes

Heated: Yes
Finished: Yes
Enclosed: Yes
Contiguous: Yes
Permitted: Yes
Wet space: No
Addition: No
Conversion: No

Home report

200 Diamond Road, Homeplace, Salem, Salem city, Virginia,
United States, 24153

6 Floor 2 - Foyer



Dimensions: 10'7" x 15'5"
Area: 135 sq. ft
Counted as living area: Yes

Heated: Yes
Finished: Yes
Enclosed: Yes
Contiguous: Yes
Permitted: Yes
Wet space: No
Addition: No
Conversion: No

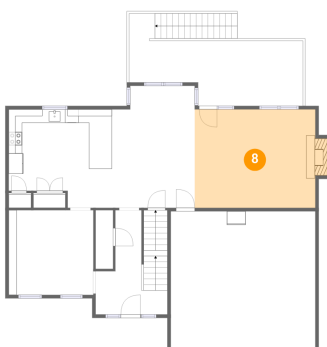
7 Floor 2 - Porch



Dimensions: 11'1" x 4'11"
Area: 55 sq. ft
Counted as living area: No

Heated: No
Finished: Yes
Enclosed: No
Contiguous: Yes
Permitted: Yes
Wet space: No
Addition: No
Conversion: No

8 Floor 2 - Family Room



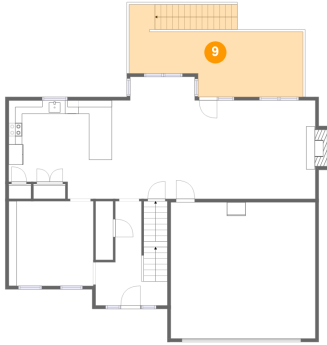
Dimensions: 17'10" x 14'7"
Area: 270 sq. ft
Counted as living area: Yes

Heated: Yes
Finished: Yes
Enclosed: Yes
Contiguous: Yes
Permitted: Yes
Wet space: No
Addition: No
Conversion: No

Home report

200 Diamond Road, Homeplace, Salem, Salem city, Virginia,
United States, 24153

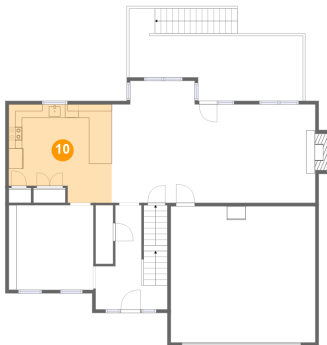
9 Floor 2 - Deck



Dimensions: 25'9" x 13'8"
Area: 273 sq. ft
Counted as living area: No

Heated: No
Finished: Yes
Enclosed: No
Contiguous: Yes
Permitted: Yes
Wet space: No
Addition: No
Conversion: No

10 Floor 2 - Kitchen



Dimensions: 15'3" x 14'6"
Area: 200 sq. ft
Counted as living area: Yes

Heated: Yes
Finished: Yes
Enclosed: Yes
Contiguous: Yes
Permitted: Yes
Wet space: No
Addition: No
Conversion: No

11 Floor 2 - Living Room

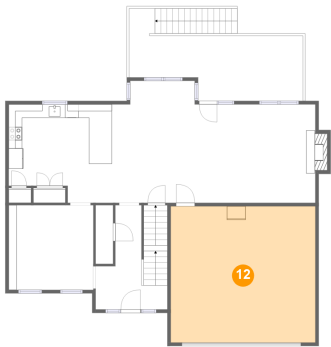


Dimensions: 12'6" x 12'6"
Area: 157 sq. ft
Counted as living area: Yes

Heated: Yes
Finished: Yes
Enclosed: Yes
Contiguous: Yes
Permitted: Yes
Wet space: No
Addition: No
Conversion: No

200 Diamond Road, Homeplace, Salem, Salem city, Virginia,
United States, 24153

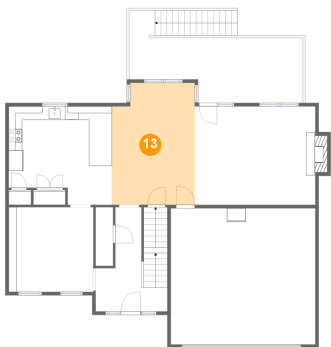
12 Floor 2 - Garage



Dimensions: 21'5" x 20'2"
Area: 431 sq. ft
Counted as living area: No

Heated: No
Finished: No
Enclosed: Yes
Contiguous: Yes
Permitted: Yes
Wet space: No
Addition: No
Conversion: No

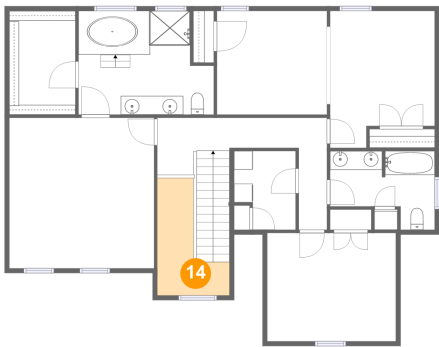
13 Floor 2 - Dining Area



Dimensions: 12'3" x 18'0"
Area: 212 sq. ft
Counted as living area: Yes

Heated: Yes
Finished: Yes
Enclosed: Yes
Contiguous: Yes
Permitted: Yes
Wet space: No
Addition: No
Conversion: No

14 Floor 3 - Open To Below



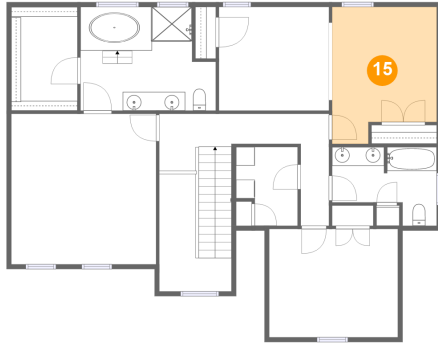
Dimensions: 7'8" x 12'6"
Area: 62 sq. ft
Counted as living area: No

Heated: No
Finished: No
Enclosed: No
Contiguous: Yes
Permitted: No
Wet space: No
Addition: No
Conversion: No

Home report

200 Diamond Road, Homeplace, Salem, Salem city, Virginia,
United States, 24153

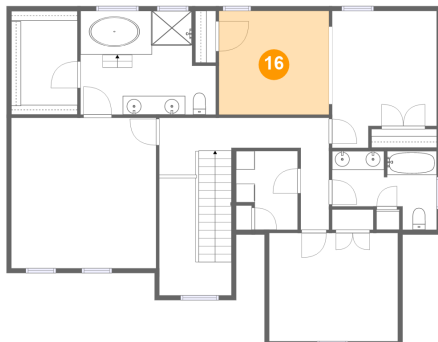
15 Floor 3 - Bedroom



Dimensions: 11'2" x 14'7"
Area: 146 sq. ft
Counted as living area: Yes

Heated: Yes
Finished: Yes
Enclosed: Yes
Contiguous: Yes
Permitted: Yes
Wet space: No
Addition: No
Conversion: No

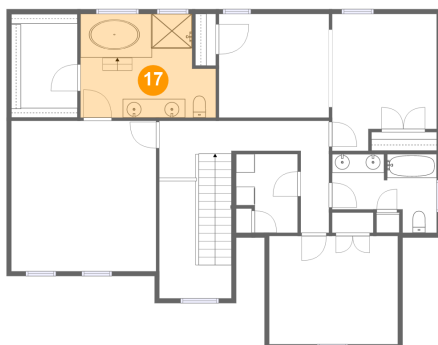
16 Floor 3 - Bedroom



Dimensions: 11'9" x 11'1"
Area: 130 sq. ft
Counted as living area: Yes

Heated: Yes
Finished: Yes
Enclosed: Yes
Contiguous: Yes
Permitted: Yes
Wet space: No
Addition: No
Conversion: No

17 Floor 3 - Primary Bath

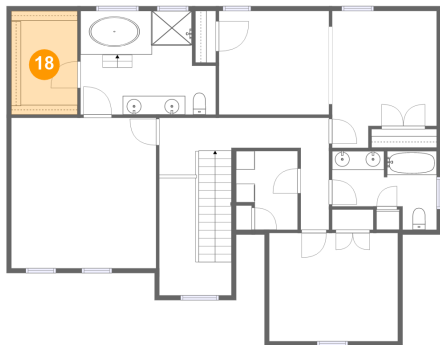


Dimensions: 14'5" x 11'1"
Area: 145 sq. ft
Counted as living area: Yes

Heated: Yes
Finished: Yes
Enclosed: Yes
Contiguous: Yes
Permitted: Yes
Wet space: Yes
Addition: No
Conversion: No

200 Diamond Road, Homeplace, Salem, Salem city, Virginia,
United States, 24153

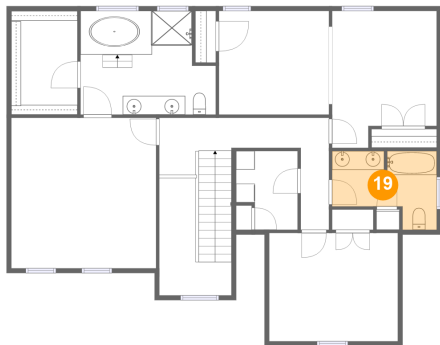
18 Floor 3 - W.I.C.



Dimensions: 7'1" x 11'1"
Area: 78 sq. ft
Counted as living area: Yes

Heated: Yes
Finished: Yes
Enclosed: Yes
Contiguous: Yes
Permitted: Yes
Wet space: No
Addition: No
Conversion: No

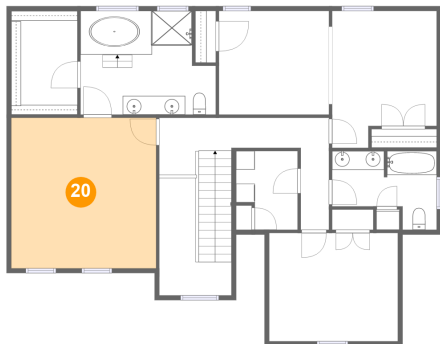
19 Floor 3 - Bath



Dimensions: 11'2" x 8'5"
Area: 74 sq. ft
Counted as living area: Yes

Heated: Yes
Finished: Yes
Enclosed: Yes
Contiguous: Yes
Permitted: Yes
Wet space: Yes
Addition: No
Conversion: No

20 Floor 3 - Primary Bedroom



Dimensions: 15'5" x 16'1"
Area: 248 sq. ft
Counted as living area: Yes

Heated: Yes
Finished: Yes
Enclosed: Yes
Contiguous: Yes
Permitted: Yes
Wet space: No
Addition: No
Conversion: No

200 Diamond Road, Homeplace, Salem, Salem city, Virginia,
United States, 24153

21 Floor 3 - Laundry



Dimensions: 6'7" x 8'5"
Area: 49 sq. ft
Counted as living area: Yes

Heated: Yes
Finished: Yes
Enclosed: Yes
Contiguous: Yes
Permitted: Yes
Wet space: No
Addition: No
Conversion: No

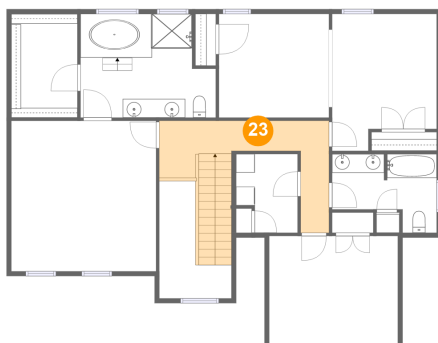
22 Floor 3 - Bedroom



Dimensions: 13'9" x 11'7"
Area: 158 sq. ft
Counted as living area: Yes

Heated: Yes
Finished: Yes
Enclosed: Yes
Contiguous: Yes
Permitted: Yes
Wet space: No
Addition: No
Conversion: No

23 Floor 3 - Hall



Dimensions: 18'1" x 11'11"
Area: 144 sq. ft
Counted as living area: Yes

Heated: Yes
Finished: Yes
Enclosed: Yes
Contiguous: Yes
Permitted: Yes
Wet space: No
Addition: No
Conversion: No