

Home report

3659 Sunrise Avenue Northwest, Roundhill, Roanoke, Roanoke city, Virginia, United States, 24012

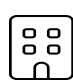


Total Area: 1258 sq. ft


Floor 1: 0 sq. ft, Floor 2: 853 sq. ft, Floor 3: 405 sq. ft


Excluded: Basement 767 sq. ft, Fireplace 11 sq. ft, Low ceiling 194 sq. ft, Attic 68 sq. ft, Walls: 188 sq. ft

Property summary

 **3** Floors

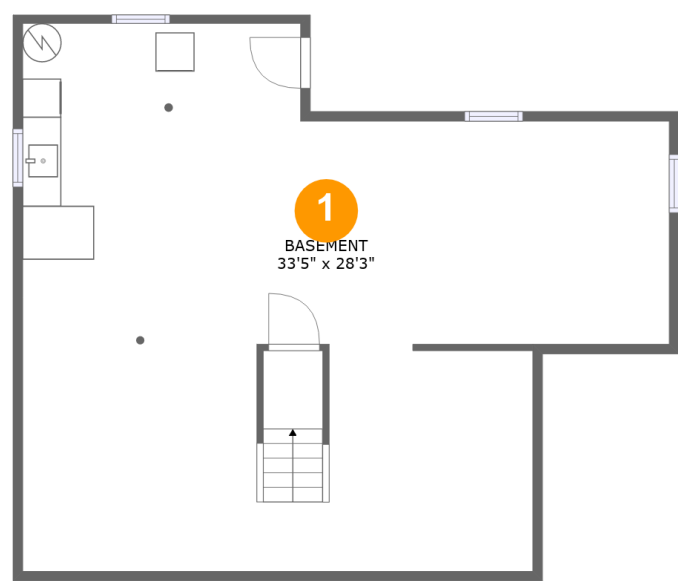
 **3** Bedrooms

 **1** Bathrooms

 **1** Half baths

Home report

3659 Sunrise Avenue Northwest, Roundhill, Roanoke, Roanoke city, Virginia, United States, 24012



Room dimensions

Floor 1 Total:0sqft Excluded: 767sqft

#		Max Dimensions	sqft	Included
1	Basement	33'5" x 28'3"	767 sq. ft	No

Home report

3659 Sunrise Avenue Northwest, Roundhill, Roanoke, Roanoke city, Virginia, United States, 24012



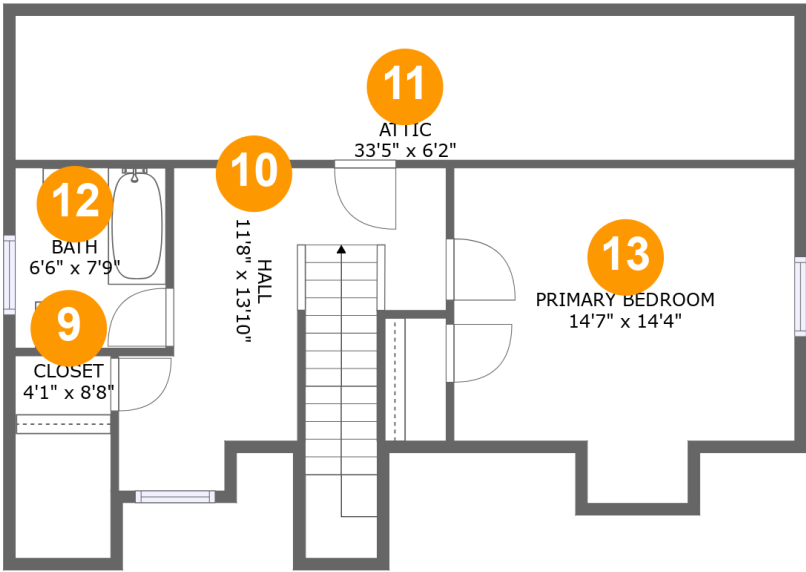
Room dimensions

Floor 2 Total:853sqft Excluded: 11sqft

#		Max Dimensions	sqft	Included
2	Kitchen	11'1" x 10'11"	122 sq. ft	Yes
3	Living Room	17'7" x 11'11"	219 sq. ft	Yes
4	Bedroom	12'1" x 10'2"	123 sq. ft	Yes
5	Dining Room	9'7" x 10'11"	105 sq. ft	Yes
6	Hall	3'3" x 7'5"	24 sq. ft	Yes
7	Bath	8'7" x 7'5"	48 sq. ft	Yes
8	Bedroom	12'1" x 10'1"	122 sq. ft	Yes

Home report

3659 Sunrise Avenue Northwest, Roundhill, Roanoke, Roanoke city, Virginia, United States, 24012

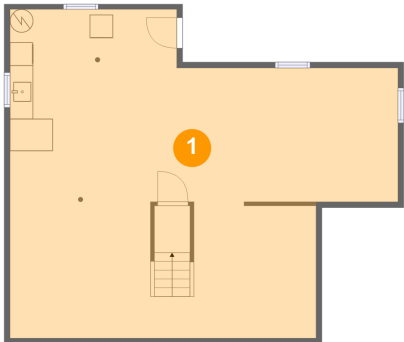


Room dimensions

Floor 3 Total:405sqft Excluded: 262sqft

#		Max Dimensions	sqft	Included
9	Closet	4'1" x 8'8"	10 sq. ft	Yes
10	Hall	11'8" x 13'10"	149 sq. ft	Yes
11	Attic	33'5" x 6'2"	68 sq. ft	No
12	Bath	6'6" x 7'9"	42 sq. ft	Yes
13	Primary Bedroom	14'7" x 14'4"	170 sq. ft	Yes

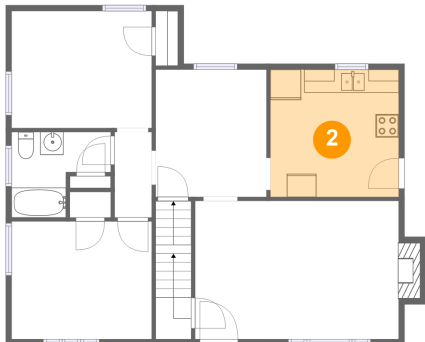
1 Floor 1 - Basement



Max Dimensions: 33'5" x 28'3"
Calculated Area: 767 sq. ft
Included: No

Heated: Yes
Finished: No
Enclosed: Yes
Contiguous: Yes
Permitted: Yes
Wet space: No
Addition: No
Conversion: No

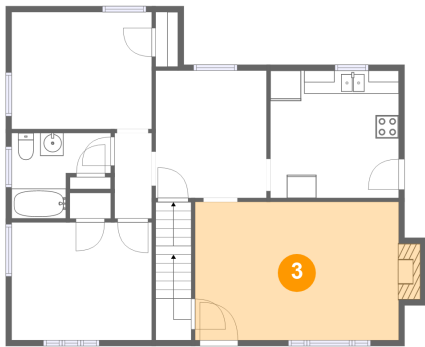
2 Floor 2 - Kitchen



Max Dimensions: 11'1" x 10'11"
Calculated Area: 122 sq. ft
Included: Yes

Heated: Yes
Finished: Yes
Enclosed: Yes
Contiguous: Yes
Permitted: Yes
Wet space: No
Addition: No
Conversion: No

3 Floor 2 - Living Room



Max Dimensions: 17'7" x 11'11"
Calculated Area: 219 sq. ft
Included: Yes

Heated: Yes
Finished: Yes
Enclosed: Yes
Contiguous: Yes
Permitted: Yes
Wet space: No
Addition: No
Conversion: No

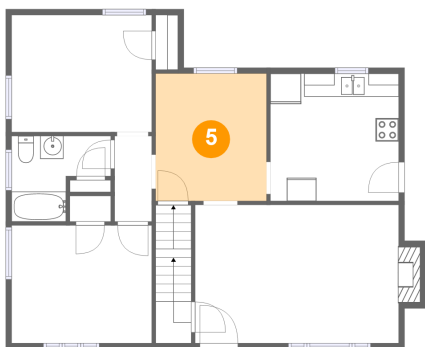
4 Floor 2 - Bedroom



Max Dimensions: 12'1" x 10'2"
Calculated Area: 123 sq. ft
Included: Yes

Heated: Yes
Finished: Yes
Enclosed: Yes
Contiguous: Yes
Permitted: Yes
Wet space: No
Addition: No
Conversion: No

5 Floor 2 - Dining Room



Max Dimensions: 9'7" x 10'11"
Calculated Area: 105 sq. ft
Included: Yes

Heated: Yes
Finished: Yes
Enclosed: Yes
Contiguous: Yes
Permitted: Yes
Wet space: No
Addition: No
Conversion: No

3659 Sunrise Avenue Northwest, Roundhill, Roanoke, Roanoke city, Virginia, United States, 24012

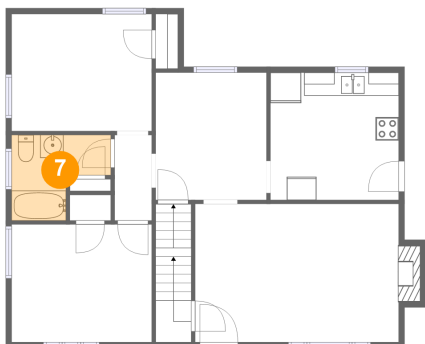
6 Floor 2 - Hall



Max Dimensions: 3'3" x 7'5"
Calculated Area: 24 sq. ft
Included: Yes

Heated: Yes
Finished: Yes
Enclosed: Yes
Contiguous: Yes
Permitted: Yes
Wet space: No
Addition: No
Conversion: No

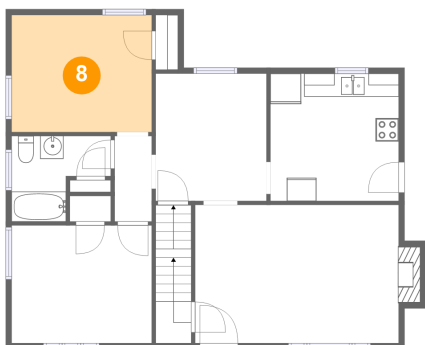
7 Floor 2 - Bath



Max Dimensions: 8'7" x 7'5"
Calculated Area: 48 sq. ft
Included: Yes

Heated: Yes
Finished: Yes
Enclosed: Yes
Contiguous: Yes
Permitted: Yes
Wet space: Yes
Addition: No
Conversion: No

8 Floor 2 - Bedroom



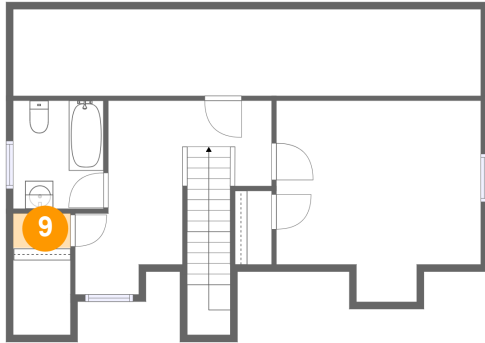
Max Dimensions: 12'1" x 10'1"
Calculated Area: 122 sq. ft
Included: Yes

Heated: Yes
Finished: Yes
Enclosed: Yes
Contiguous: Yes
Permitted: Yes
Wet space: No
Addition: No
Conversion: No

Home report

3659 Sunrise Avenue Northwest, Roundhill, Roanoke, Roanoke city, Virginia, United States, 24012

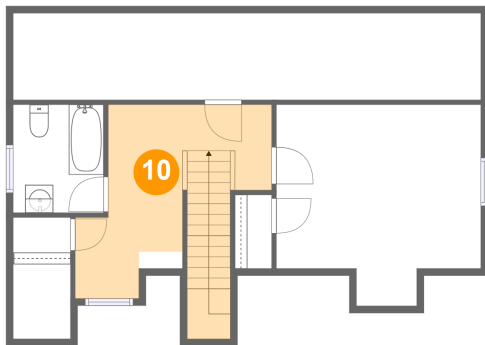
9 Floor 3 - Closet



Max Dimensions: 4'1" x 8'8"
Calculated Area: 10 sq. ft
Included: Yes

Heated: Yes
Finished: Yes
Enclosed: Yes
Contiguous: Yes
Permitted: Yes
Wet space: No
Addition: No
Conversion: No

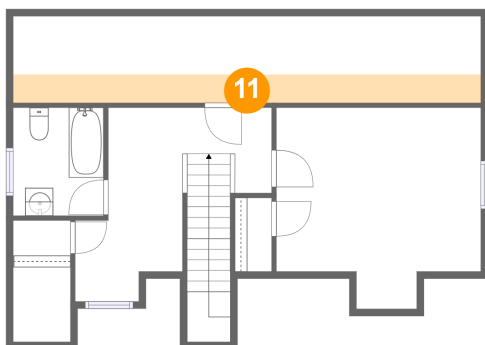
10 Floor 3 - Hall



Max Dimensions: 11'8" x 13'10"
Calculated Area: 149 sq. ft
Included: Yes

Heated: Yes
Finished: Yes
Enclosed: Yes
Contiguous: Yes
Permitted: Yes
Wet space: No
Addition: No
Conversion: No

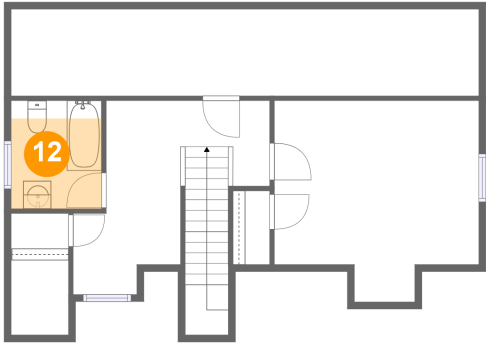
11 Floor 3 - Attic



Max Dimensions: 33'5" x 6'2"
Calculated Area: 68 sq. ft
Included: No

Heated: No
Finished: No
Enclosed: Yes
Contiguous: Yes
Permitted: Yes
Wet space: No
Addition: No
Conversion: No

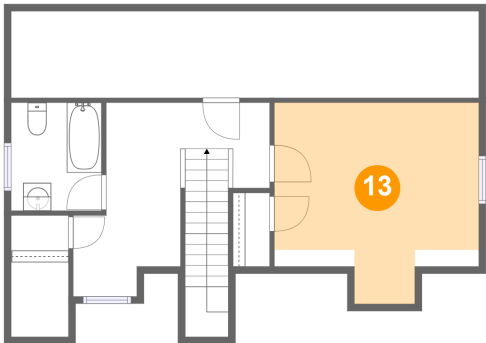
12 Floor 3 - Bath



Max Dimensions: 6'6" x 7'9"
Calculated Area: 42 sq. ft
Included: Yes

Heated: Yes
Finished: Yes
Enclosed: Yes
Contiguous: Yes
Permitted: Yes
Wet space: Yes
Addition: No
Conversion: No

13 Floor 3 - Primary Bedroom



Max Dimensions: 14'7" x 14'4"
Calculated Area: 170 sq. ft
Included: Yes

Heated: Yes
Finished: Yes
Enclosed: Yes
Contiguous: Yes
Permitted: Yes
Wet space: No
Addition: No
Conversion: No