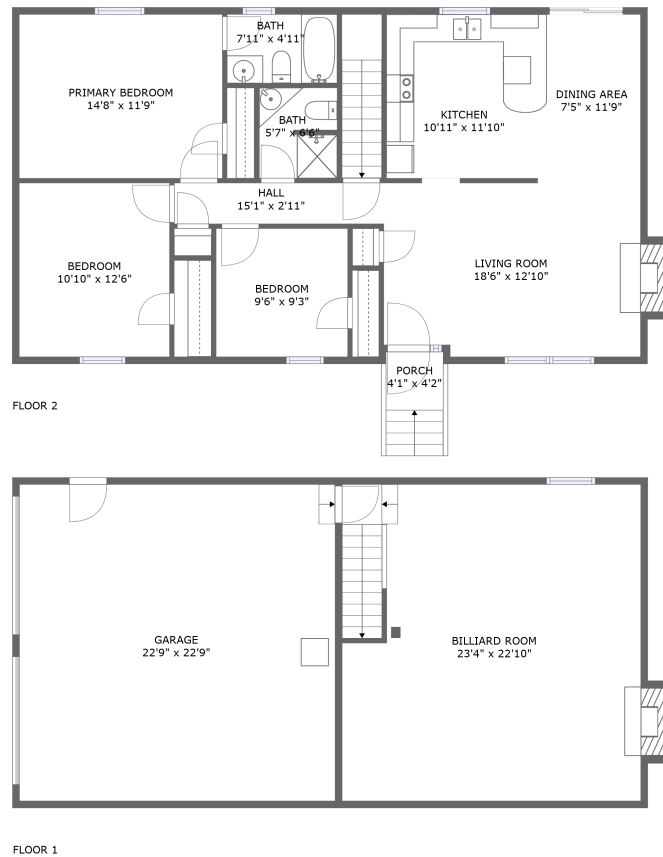


Home report

5576 Marty Lane, Clemmons, Forsyth County, North Carolina, United States, 27012



Total GLA: 1707 sq. ft

Floor 1: 536 sq. ft, Floor 2: 1171 sq. ft

Excluded: Garage 553 sq. ft, Fireplace 22 sq. ft, Porch 31 sq. ft

Property summary



2
Floors



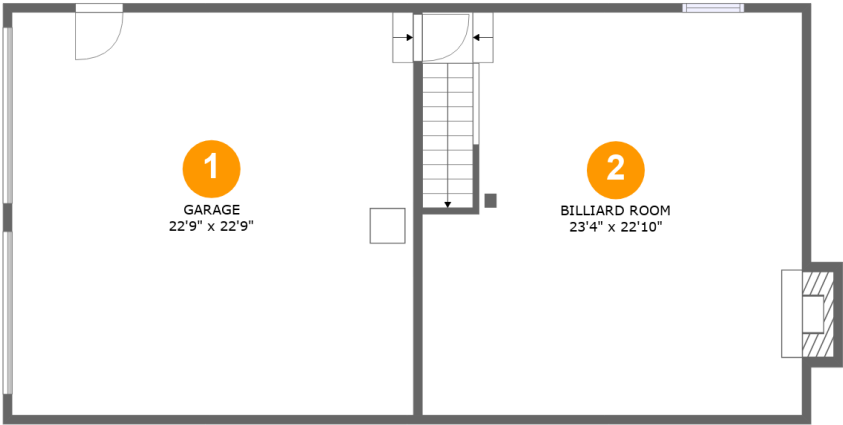
3
Bedrooms



2
Bathrooms



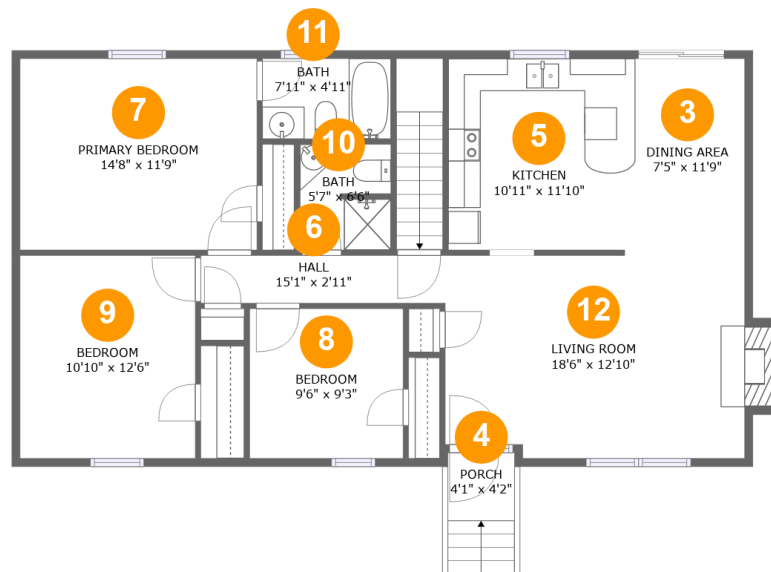
1
Garages



Room dimensions

Floor 1 Total:536sqft Excluded: 564sqft

#		Max Dimensions	sqft	Included
1	Garage	22'9" x 22'9"	518 sq. ft	No
2	Billiard Room	23'4" x 22'10"	497 sq. ft	Yes



Room dimensions

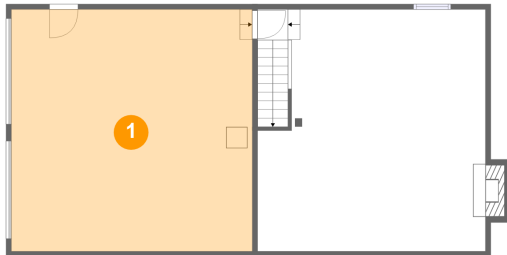
Floor 2

Total:1171sqft

Excluded: 42sqft

#		Max Dimensions	sqft	Included
3	Dining Area	7'5" x 11'9"	88 sq. ft	Yes
4	Porch	4'1" x 4'2"	31 sq. ft	No
5	Kitchen	10'11" x 11'10"	129 sq. ft	Yes
6	Hall	15'1" x 2'11"	44 sq. ft	Yes
7	Primary Bedroom	14'8" x 11'9"	173 sq. ft	Yes
8	Bedroom	9'6" x 9'3"	88 sq. ft	Yes
9	Bedroom	10'10" x 12'6"	136 sq. ft	Yes
10	Bath	5'7" x 6'6"	36 sq. ft	Yes
11	Bath	7'11" x 4'11"	39 sq. ft	Yes
12	Living Room	18'6" x 12'10"	240 sq. ft	Yes

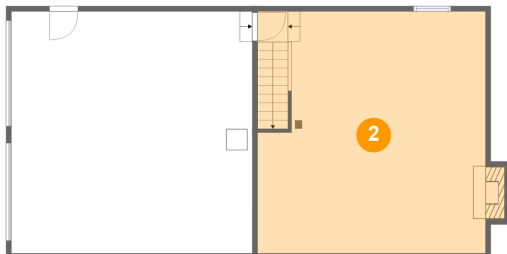
1 Floor 1 - Garage



Max Dimensions: 22'9" x
22'9"
Calculated Area: 518 sq. ft
Included: No

Heated: No
Finished: No
Enclosed: Yes
Contiguous:
Yes
Permitted: Yes
Wet space: No
Addition: No
Conversion: No

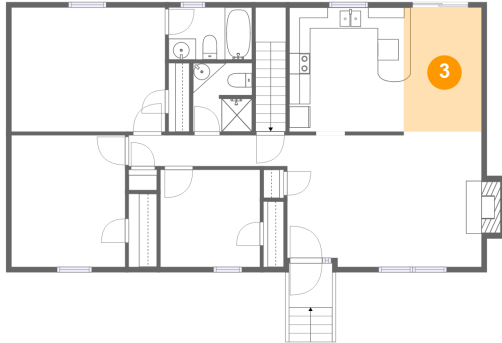
2 Floor 1 - Billiard Room



Max Dimensions: 23'4" x
22'10"
Calculated Area: 497 sq. ft
Included: Yes

Heated: Yes
Finished: Yes
Enclosed: Yes
Contiguous:
Yes
Permitted: Yes
Wet space: No
Addition: No
Conversion: No

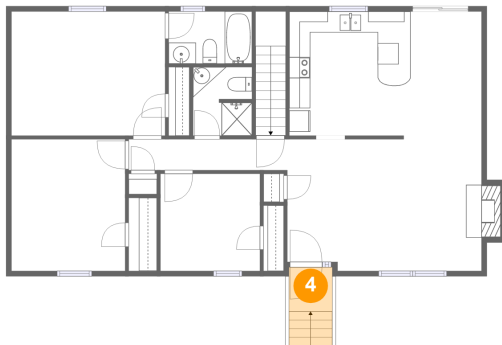
3 Floor 2 - Dining Area



Max Dimensions: 7'5" x
11'9"
Calculated Area: 88 sq. ft
Included: Yes

Heated: Yes
Finished: Yes
Enclosed: Yes
Contiguous:
Yes
Permitted: Yes
Wet space: No
Addition: No
Conversion: No

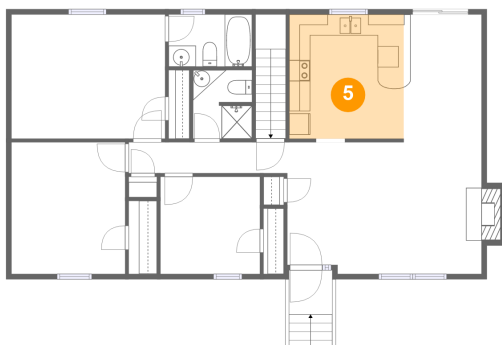
4 Floor 2 - Porch



Max Dimensions: 4'1" x 4'2"
Calculated Area: 31 sq. ft
Included: No

Heated: No
Finished: Yes
Enclosed: No
Contiguous: Yes
Permitted: Yes
Wet space: No
Addition: No
Conversion: No

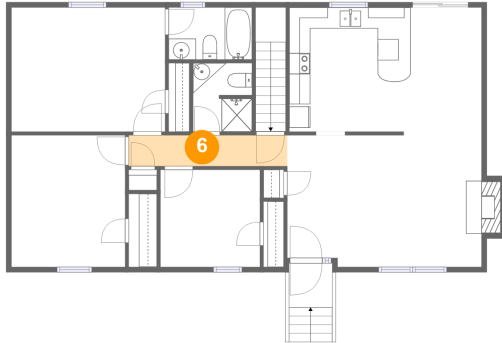
5 Floor 2 - Kitchen



Max Dimensions: 10'11" x
11'10"
Calculated Area: 129 sq. ft
Included: Yes

Heated: Yes
Finished: Yes
Enclosed: Yes
Contiguous:
Yes
Permitted: Yes
Wet space: No
Addition: No
Conversion: No

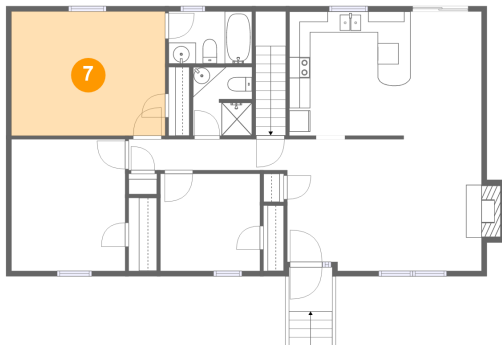
6 Floor 2 - Hall



Max Dimensions: 15'1" x 2'11"
Calculated Area: 44 sq. ft
Included: Yes

Heated: Yes
Finished: Yes
Enclosed: Yes
Contiguous: Yes
Permitted: Yes
Wet space: No
Addition: No
Conversion: No

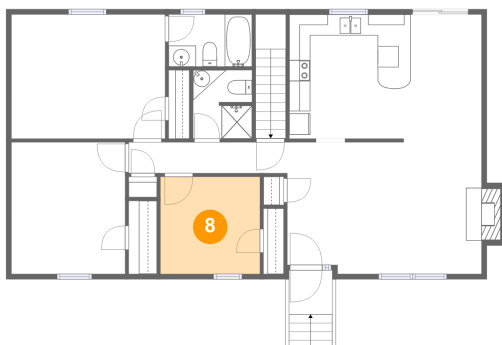
7 Floor 2 - Primary Bedroom



Max Dimensions: 14'8" x 11'9"
Calculated Area: 173 sq. ft
Included: Yes

Heated: Yes
Finished: Yes
Enclosed: Yes
Contiguous: Yes
Permitted: Yes
Wet space: No
Addition: No
Conversion: No

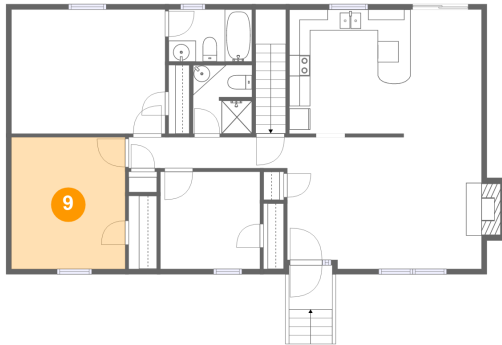
8 Floor 2 - Bedroom



Max Dimensions: 9'6" x 9'3"
Calculated Area: 88 sq. ft
Included: Yes

Heated: Yes
Finished: Yes
Enclosed: Yes
Contiguous: Yes
Permitted: Yes
Wet space: No
Addition: No
Conversion: No

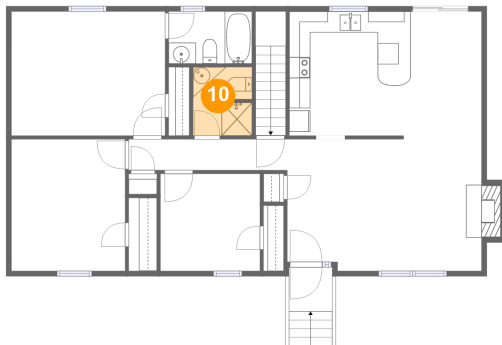
9 Floor 2 - Bedroom



Max Dimensions: 10'10" x
12'6"
Calculated Area: 136 sq. ft
Included: Yes

Heated: Yes
Finished: Yes
Enclosed: Yes
Contiguous:
Yes
Permitted: Yes
Wet space: No
Addition: No
Conversion: No

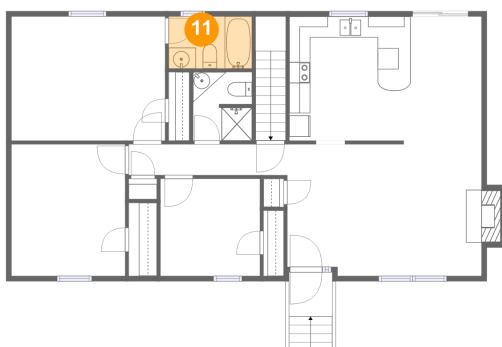
10 Floor 2 - Bath



Max Dimensions: 5'7" x 6'6"
Calculated Area: 36 sq. ft
Included: Yes

Heated: Yes
Finished: Yes
Enclosed: Yes
Contiguous: Yes
Permitted: Yes
Wet space: Yes
Addition: No
Conversion: No

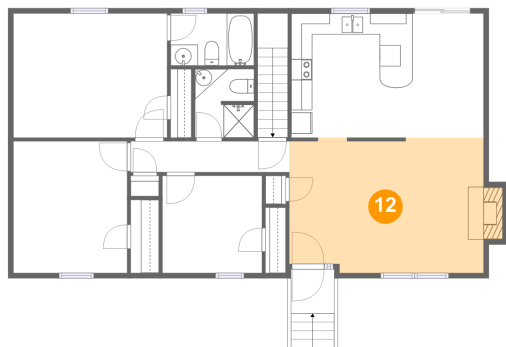
11 Floor 2 - Bath



Max Dimensions: 7'11" x
4'11"
Calculated Area: 39 sq. ft
Included: Yes

Heated: Yes
Finished: Yes
Enclosed: Yes
Contiguous:
Yes
Permitted: Yes
Wet space: Yes
Addition: No
Conversion: No

12 Floor 2 - Living Room



Max Dimensions: 18'6" x
12'10"
Calculated Area: 240 sq. ft
Included: Yes

Heated: Yes
Finished: Yes
Enclosed: Yes
Contiguous:
Yes
Permitted: Yes
Wet space: No
Addition: No
Conversion: No