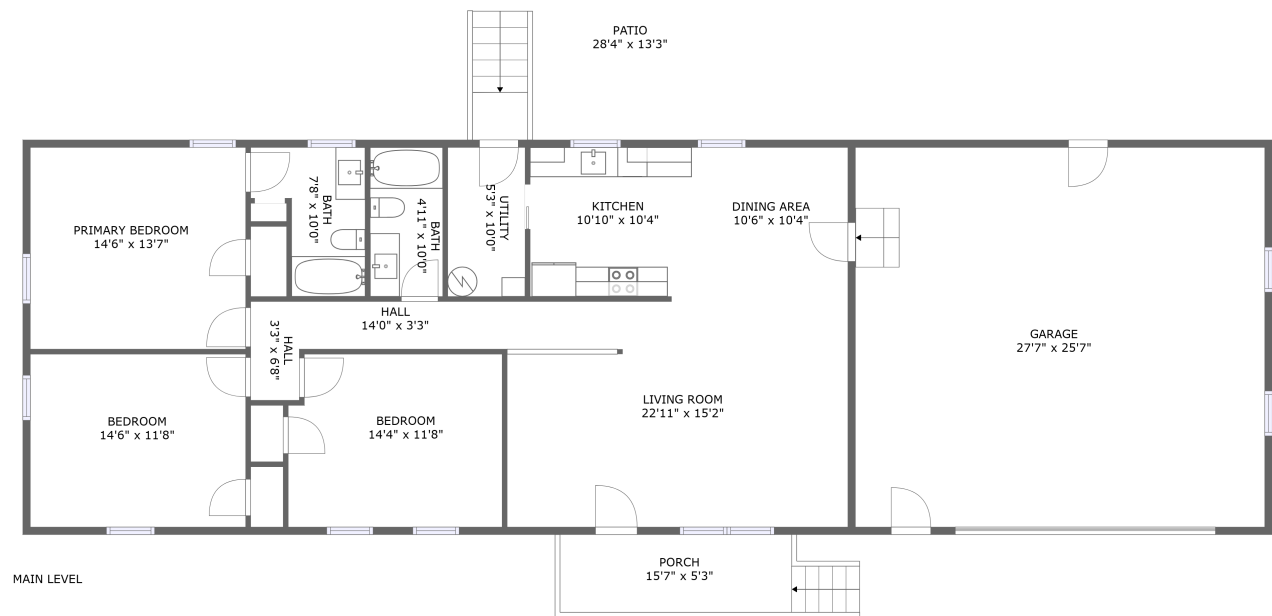


Home report

3310 Bennett Springs Road, Bennett Springs, Salem, Roanoke County, Virginia, United States, 24153



Total Area: 1406 sq. ft

Floor 1: 1406 sq. ft

Excluded: Garage 704 sq. ft, Patio 377 sq. ft, Porch 82 sq. ft, Walls: 123 sq. ft

Property summary

1 Floors

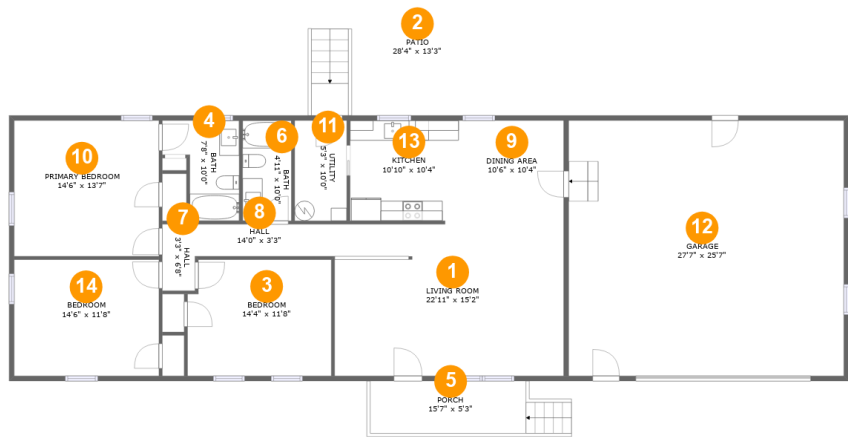
3 Bedrooms

2 Bathrooms

1 Garages

Home report

3310 Bennett Springs Road, Bennett Springs, Salem, Roanoke County, Virginia, United States, 24153



Room dimensions

Floor 1

Total:1406sqft

Excluded: 1163sqft

#		Max Dimensions	sqft	Included
1	Living Room	22'11" x 15'2"	348 sq. ft	Yes
2	Patio	28'4" x 13'3"	377 sq. ft	No
3	Bedroom	14'4" x 11'8"	164 sq. ft	Yes
4	Bath	7'8" x 10'0"	59 sq. ft	Yes
5	Porch	15'7" x 5'3"	82 sq. ft	No
6	Bath	4'11" x 10'0"	49 sq. ft	Yes
7	Hall	3'3" x 6'8"	22 sq. ft	Yes
8	Hall	14'0" x 3'3"	45 sq. ft	Yes
9	Dining Area	10'6" x 10'4"	109 sq. ft	Yes
10	Primary Bedroom	14'6" x 13'7"	197 sq. ft	Yes
11	Utility	5'3" x 10'0"	52 sq. ft	Yes

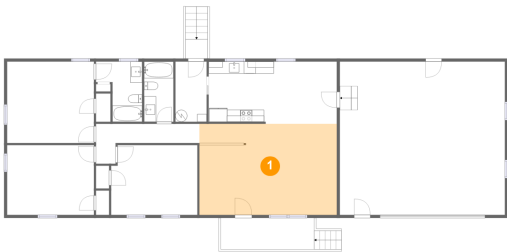
Home report

3310 Bennett Springs Road, Bennett Springs, Salem, Roanoke County, Virginia, United States, 24153

#		Max Dimensions	sqft	Included
12	Garage	27'7" x 25'7"	704 sq. ft	No
13	Kitchen	10'10" x 10'4"	109 sq. ft	Yes
14	Bedroom	14'6" x 11'8"	169 sq. ft	Yes

3310 Bennett Springs Road, Bennett Springs, Salem, Roanoke County, Virginia, United States, 24153

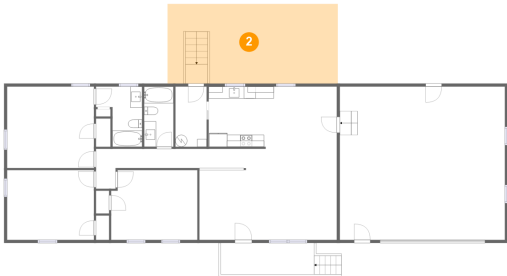
1 Floor 1 - Living Room



Max Dimensions: 22'11" x 15'2"
Calculated Area: 348 sq. ft
Included: Yes

Heated: Yes
Finished: Yes
Enclosed: Yes
Contiguous: Yes
Permitted: Yes
Wet space: No
Addition: No
Conversion: No

2 Floor 1 - Patio

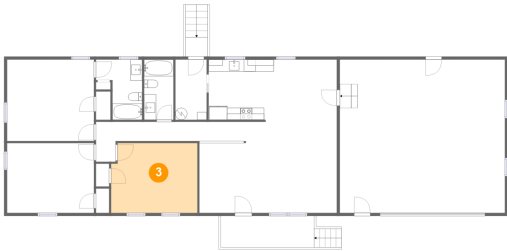


Max Dimensions: 28'4" x 13'3"
Calculated Area: 377 sq. ft
Included: No

Heated: No
Finished: Yes
Enclosed: No
Contiguous: Yes
Permitted: Yes
Wet space: No
Addition: No
Conversion: No

3310 Bennett Springs Road, Bennett Springs, Salem, Roanoke County, Virginia, United States, 24153

3 Floor 1 - Bedroom



Max Dimensions: 14'4" x 11'8"
Calculated Area: 164 sq. ft
Included: Yes

Heated: Yes
Finished: Yes
Enclosed: Yes
Contiguous: Yes
Permitted: Yes
Wet space: No
Addition: No
Conversion: No

4 Floor 1 - Bath



Max Dimensions: 7'8" x 10'0"
Calculated Area: 59 sq. ft
Included: Yes

Heated: Yes
Finished: Yes
Enclosed: Yes
Contiguous: Yes
Permitted: Yes
Wet space: Yes
Addition: No
Conversion: No

5 Floor 1 - Porch

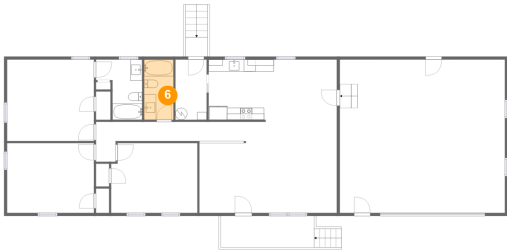


Max Dimensions: 15'7" x 5'3"
Calculated Area: 82 sq. ft
Included: No

Heated: No
Finished: Yes
Enclosed: No
Contiguous: Yes
Permitted: Yes
Wet space: No
Addition: No
Conversion: No

3310 Bennett Springs Road, Bennett Springs, Salem, Roanoke County, Virginia, United States, 24153

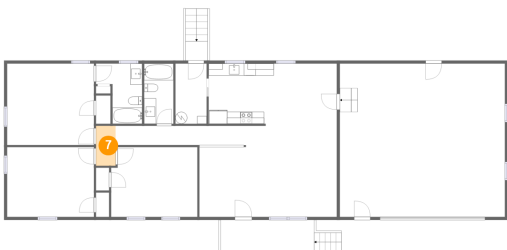
6 Floor 1 - Bath



Max Dimensions: 4'11" x 10'0"
Calculated Area: 49 sq. ft
Included: Yes

Heated: Yes
Finished: Yes
Enclosed: Yes
Contiguous: Yes
Permitted: Yes
Wet space: Yes
Addition: No
Conversion: No

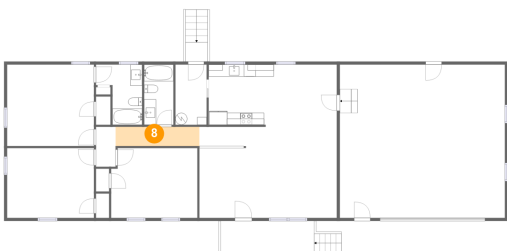
7 Floor 1 - Hall



Max Dimensions: 3'3" x 6'8"
Calculated Area: 22 sq. ft
Included: Yes

Heated: Yes
Finished: Yes
Enclosed: Yes
Contiguous: Yes
Permitted: Yes
Wet space: No
Addition: No
Conversion: No

8 Floor 1 - Hall

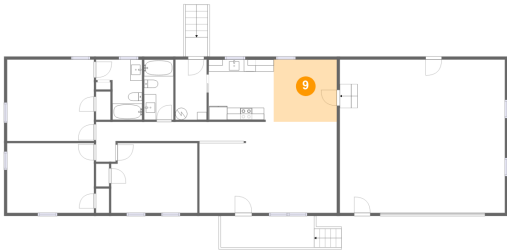


Max Dimensions: 14'0" x 3'3"
Calculated Area: 45 sq. ft
Included: Yes

Heated: Yes
Finished: Yes
Enclosed: Yes
Contiguous: Yes
Permitted: Yes
Wet space: No
Addition: No
Conversion: No

3310 Bennett Springs Road, Bennett Springs, Salem, Roanoke County, Virginia, United States, 24153

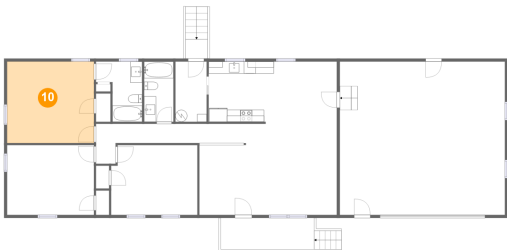
9 Floor 1 - Dining Area



Max Dimensions: 10'6" x 10'4"
Calculated Area: 109 sq. ft
Included: Yes

Heated: Yes
Finished: Yes
Enclosed: Yes
Contiguous: Yes
Permitted: Yes
Wet space: No
Addition: No
Conversion: No

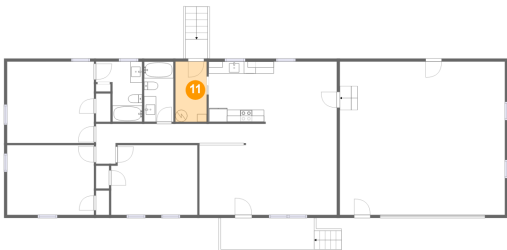
10 Floor 1 - Primary Bedroom



Max Dimensions: 14'6" x 13'7"
Calculated Area: 197 sq. ft
Included: Yes

Heated: Yes
Finished: Yes
Enclosed: Yes
Contiguous: Yes
Permitted: Yes
Wet space: No
Addition: No
Conversion: No

11 Floor 1 - Utility

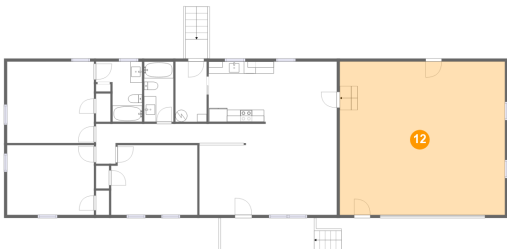


Max Dimensions: 5'3" x 10'0"
Calculated Area: 52 sq. ft
Included: Yes

Heated: Yes
Finished: Yes
Enclosed: Yes
Contiguous: Yes
Permitted: Yes
Wet space: No
Addition: No
Conversion: No

3310 Bennett Springs Road, Bennett Springs, Salem, Roanoke County, Virginia, United States, 24153

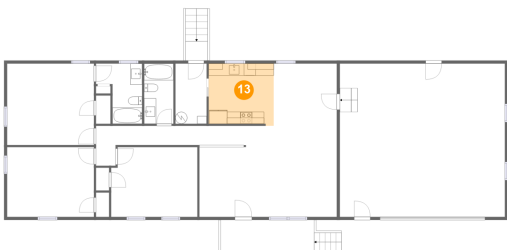
12 Floor 1 - Garage



Max Dimensions: 27'7" x 25'7"
Calculated Area: 704 sq. ft
Included: No

Heated: No
Finished: No
Enclosed: Yes
Contiguous: Yes
Permitted: Yes
Wet space: No
Addition: No
Conversion: No

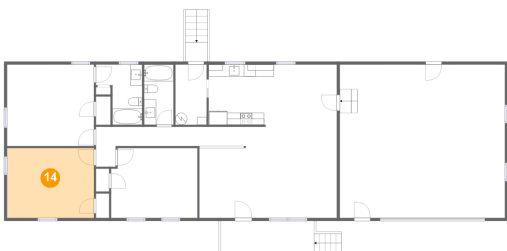
13 Floor 1 - Kitchen



Max Dimensions: 10'10" x 10'4"
Calculated Area: 109 sq. ft
Included: Yes

Heated: Yes
Finished: Yes
Enclosed: Yes
Contiguous: Yes
Permitted: Yes
Wet space: No
Addition: No
Conversion: No

14 Floor 1 - Bedroom



Max Dimensions: 14'6" x 11'8"
Calculated Area: 169 sq. ft
Included: Yes

Heated: Yes
Finished: Yes
Enclosed: Yes
Contiguous: Yes
Permitted: Yes
Wet space: No
Addition: No
Conversion: No