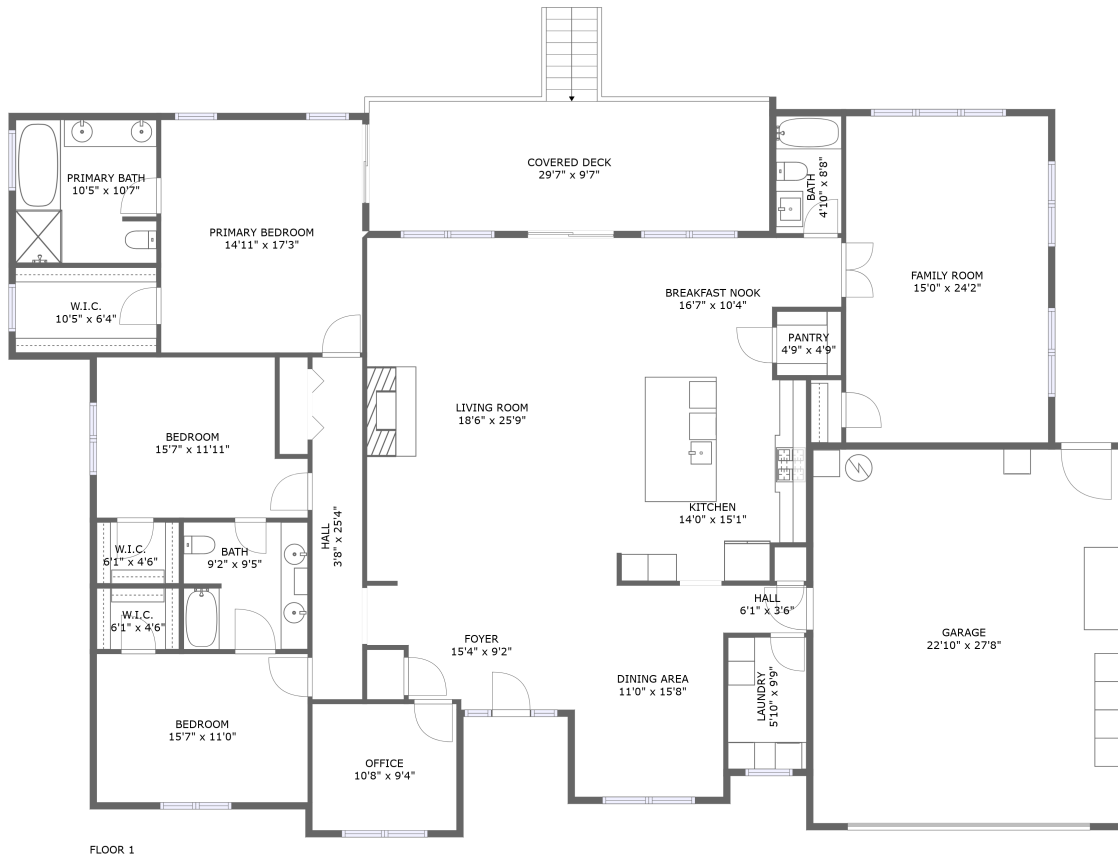




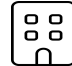


33696 Southeast Duus Road, Estacada, Clackamas County, Oregon, United States,

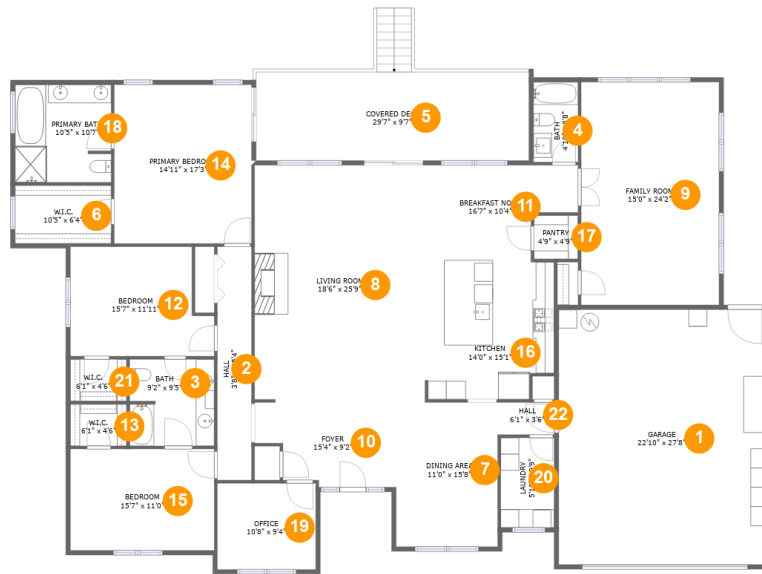


Property Summary

 **1** garages  **3** bedrooms  **3** bathrooms  **0** half baths

 **1** floors  **2,972** Gross Living Area sqft  **3,952** total sqft

33696 Southeast Duus Road, Estacada, Clackamas County, Oregon, United States,



Room Dimensions

Floor 1

Total sqft: 3952

Living area: 2972

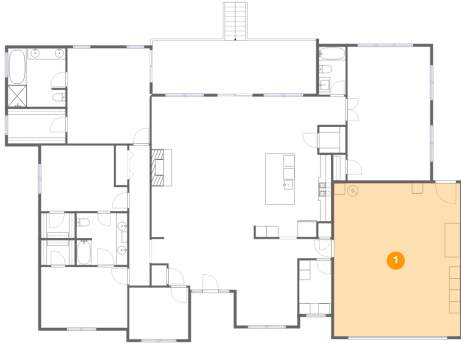
#	Room name	Dimensions	Area (sqft)	Counted as Living Area
1	Garage	22'10" x 27'8"	631 sq. ft	No
2	Hall	3'8" x 25'4"	94 sq. ft	Yes
3	Bath	9'2" x 9'5"	85 sq. ft	Yes
4	Bath	4'10" x 8'8"	42 sq. ft	Yes
5	Covered Deck	29'7" x 9'7"	284 sq. ft	No
6	W.i.c.	10'5" x 6'4"	66 sq. ft	Yes
7	Dining Area	11'0" x 15'8"	172 sq. ft	Yes
8	Living Room	18'6" x 25'9"	475 sq. ft	Yes
9	Family Room	15'0" x 24'2"	361 sq. ft	Yes
10	Foyer	15'4" x 9'2"	124 sq. ft	Yes
11	Breakfast Nook	16'7" x 10'4"	145 sq. ft	Yes

**33696 Southeast Duus Road, Estacada,
Clackamas County, Oregon, United States,**

#	Room name	Dimensions	Area (sqft)	Counted as Living Area
12	Bedroom	15'7" x 11'11"	167 sq. ft	Yes
13	W.i.c.	6'1" x 4'6"	28 sq. ft	Yes
14	Primary Bedroom	14'11" x 17'3"	257 sq. ft	Yes
15	Bedroom	15'7" x 11'0"	172 sq. ft	Yes
16	Kitchen	14'0" x 15'1"	202 sq. ft	Yes
17	Pantry	4'9" x 4'9"	23 sq. ft	No
18	Primary Bath	10'5" x 10'7"	110 sq. ft	Yes
19	Office	10'8" x 9'4"	100 sq. ft	Yes
20	Laundry	5'10" x 9'9"	56 sq. ft	Yes
21	W.i.c.	6'1" x 4'6"	28 sq. ft	Yes
22	Hall	6'1" x 3'6"	21 sq. ft	Yes

33696 Southeast Duus Road, Estacada, Clackamas County, Oregon, United States,

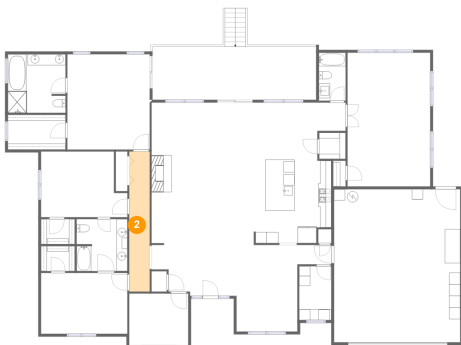
1 Floor 1 - Garage



Dimensions: 22'10" x 27'8"
Area: 631 sq. ft
Counted as Living Area: No

Heated: No
Finished: No
Enclosed: Yes
Contiguous: Yes
Permitted: Yes
Wet Space: No
Addition: No
Conversion: No

2 Floor 1 - Hall

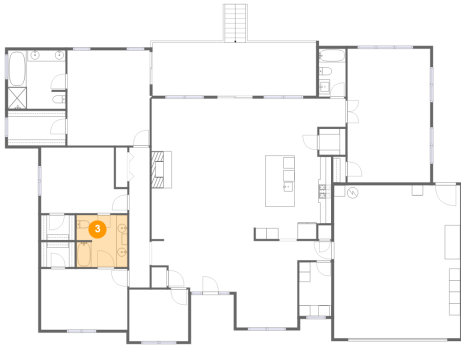


Dimensions: 3'8" x 25'4"
Area: 94 sq. ft
Counted as Living Area:
Yes

Heated: Yes
Finished: Yes
Enclosed: Yes
Contiguous:
Yes
Permitted: Yes
Wet Space: No
Addition: No
Conversion: No

33696 Southeast Duus Road, Estacada, Clackamas County, Oregon, United States,

3 Floor 1 - Bath



Dimensions: 9'2" x 9'5"
Area: 85 sq. ft
Counted as Living Area:
Yes

Heated: Yes
Finished: Yes
Enclosed: Yes
Contiguous:
Yes
Permitted: Yes
Wet Space: Yes
Addition: No
Conversion: No

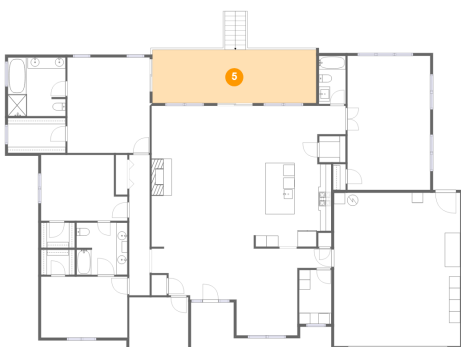
4 Floor 1 - Bath



Dimensions: 4'10" x 8'8"
Area: 42 sq. ft
Counted as Living Area:
Yes

Heated: Yes
Finished: Yes
Enclosed: Yes
Contiguous:
Yes
Permitted: Yes
Wet Space: Yes
Addition: No
Conversion: No

5 Floor 1 - Covered Deck



Dimensions: 29'7" x 9'7"
Area: 284 sq. ft
Counted as Living Area: No

Heated: No
Finished: Yes
Enclosed: No
Contiguous: Yes
Permitted: Yes
Wet Space: No
Addition: No
Conversion: No

**33696 Southeast Duus Road, Estacada,
Clackamas County, Oregon, United States,**

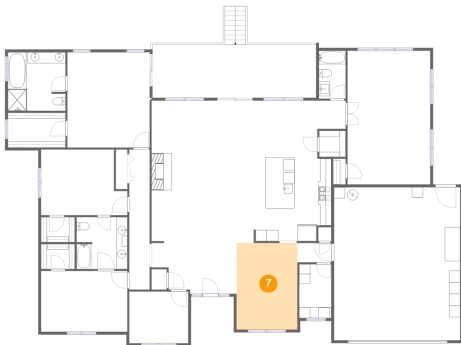
6 Floor 1 - W.i.c.



Dimensions: 10'5" x 6'4"
Area: 66 sq. ft
Counted as Living Area:
Yes

Heated: Yes
Finished: Yes
Enclosed: Yes
Contiguous:
Yes
Permitted: Yes
Wet Space: No
Addition: No
Conversion: No

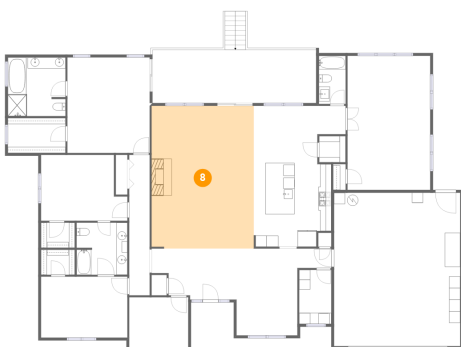
7 Floor 1 - Dining Area



Dimensions: 11'0" x 15'8"
Area: 172 sq. ft
Counted as Living Area:
Yes

Heated: Yes
Finished: Yes
Enclosed: Yes
Contiguous:
Yes
Permitted: Yes
Wet Space: No
Addition: No
Conversion: No

8 Floor 1 - Living Room

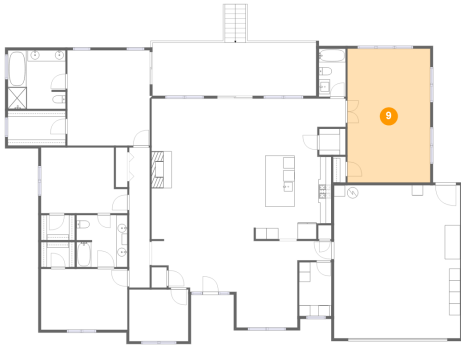


Dimensions: 18'6" x 25'9"
Area: 475 sq. ft
Counted as Living Area:
Yes

Heated: Yes
Finished: Yes
Enclosed: Yes
Contiguous:
Yes
Permitted: Yes
Wet Space: No
Addition: No
Conversion: No

33696 Southeast Duus Road, Estacada, Clackamas County, Oregon, United States,

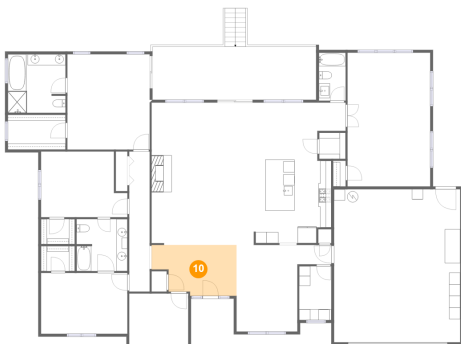
9 Floor 1 - Family Room



Dimensions: 15'0" x 24'2"
Area: 361 sq. ft
Counted as Living Area:
Yes

Heated: Yes
Finished: Yes
Enclosed: Yes
Contiguous:
Yes
Permitted: Yes
Wet Space: No
Addition: No
Conversion: No

10 Floor 1 - Foyer



Dimensions: 15'4" x 9'2"
Area: 124 sq. ft
Counted as Living Area:
Yes

Heated: Yes
Finished: Yes
Enclosed: Yes
Contiguous:
Yes
Permitted: Yes
Wet Space: No
Addition: No
Conversion: No

11 Floor 1 - Breakfast Nook

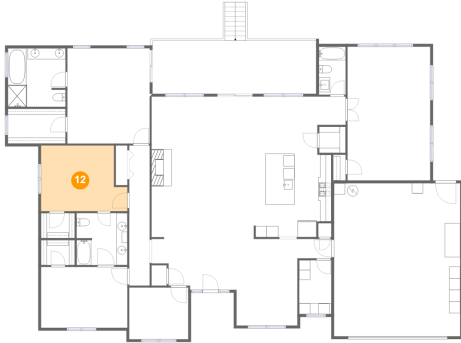


Dimensions: 16'7" x 10'4"
Area: 145 sq. ft
Counted as Living Area:
Yes

Heated: Yes
Finished: Yes
Enclosed: Yes
Contiguous:
Yes
Permitted: Yes
Wet Space: No
Addition: No
Conversion: No

**33696 Southeast Duus Road, Estacada,
Clackamas County, Oregon, United States,**

12 Floor 1 - Bedroom



Dimensions: 15'7" x 11'11"
Area: 167 sq. ft
Counted as Living Area:
Yes

Heated: Yes
Finished: Yes
Enclosed: Yes
Contiguous:
Yes
Permitted: Yes
Wet Space: No
Addition: No
Conversion: No

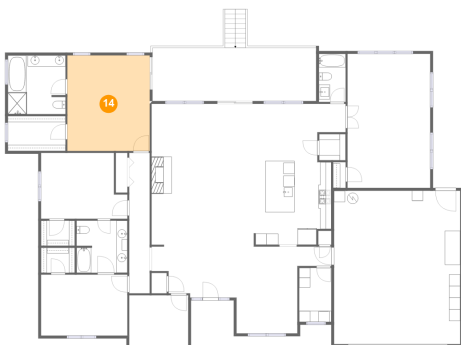
13 Floor 1 - W.i.c.



Dimensions: 6'1" x 4'6"
Area: 28 sq. ft
Counted as Living Area:
Yes

Heated: Yes
Finished: Yes
Enclosed: Yes
Contiguous:
Yes
Permitted: Yes
Wet Space: No
Addition: No
Conversion: No

14 Floor 1 - Primary Bedroom



Dimensions: 14'11" x 17'3"
Area: 257 sq. ft
Counted as Living Area:
Yes

Heated: Yes
Finished: Yes
Enclosed: Yes
Contiguous:
Yes
Permitted: Yes
Wet Space: No
Addition: No
Conversion: No

33696 Southeast Duus Road, Estacada, Clackamas County, Oregon, United States,

15 Floor 1 - Bedroom



Dimensions: 15'7" x 11'0"
Area: 172 sq. ft
Counted as Living Area:
Yes

Heated: Yes
Finished: Yes
Enclosed: Yes
Contiguous:
Yes
Permitted: Yes
Wet Space: No
Addition: No
Conversion: No

16 Floor 1 - Kitchen



Dimensions: 14'0" x 15'1"
Area: 202 sq. ft
Counted as Living Area:
Yes

Heated: Yes
Finished: Yes
Enclosed: Yes
Contiguous:
Yes
Permitted: Yes
Wet Space: No
Addition: No
Conversion: No

17 Floor 1 - Pantry



Dimensions: 4'9" x 4'9"
Area: 23 sq. ft
Counted as Living Area: No

Heated: Yes
Finished: Yes
Enclosed: Yes
Contiguous: Yes
Permitted: Yes
Wet Space: No
Addition: No
Conversion: No

**33696 Southeast Duus Road, Estacada,
Clackamas County, Oregon, United States,**

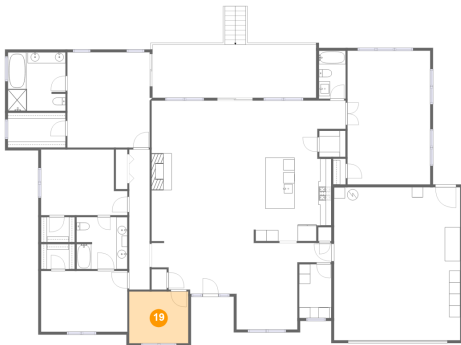
18 Floor 1 - Primary Bath



Dimensions: 10'5" x 10'7"
Area: 110 sq. ft
Counted as Living Area:
Yes

Heated: Yes
Finished: Yes
Enclosed: Yes
Contiguous:
Yes
Permitted: Yes
Wet Space: Yes
Addition: No
Conversion: No

19 Floor 1 - Office



Dimensions: 10'8" x 9'4"
Area: 100 sq. ft
Counted as Living Area:
Yes

Heated: Yes
Finished: Yes
Enclosed: Yes
Contiguous:
Yes
Permitted: Yes
Wet Space: No
Addition: No
Conversion: No

20 Floor 1 - Laundry



Dimensions: 5'10" x 9'9"
Area: 56 sq. ft
Counted as Living Area:
Yes

Heated: Yes
Finished: Yes
Enclosed: Yes
Contiguous:
Yes
Permitted: Yes
Wet Space: No
Addition: No
Conversion: No

**33696 Southeast Duus Road, Estacada,
Clackamas County, Oregon, United States,**

21 Floor 1 - W.i.c.



Dimensions: 6'1" x 4'6"
Area: 28 sq. ft
Counted as Living Area:
Yes

Heated: Yes
Finished: Yes
Enclosed: Yes
Contiguous:
Yes
Permitted: Yes
Wet Space: No
Addition: No
Conversion: No

22 Floor 1 - Hall



Dimensions: 6'1" x 3'6"
Area: 21 sq. ft
Counted as Living Area:
Yes

Heated: Yes
Finished: Yes
Enclosed: Yes
Contiguous:
Yes
Permitted: Yes
Wet Space: No
Addition: No
Conversion: No