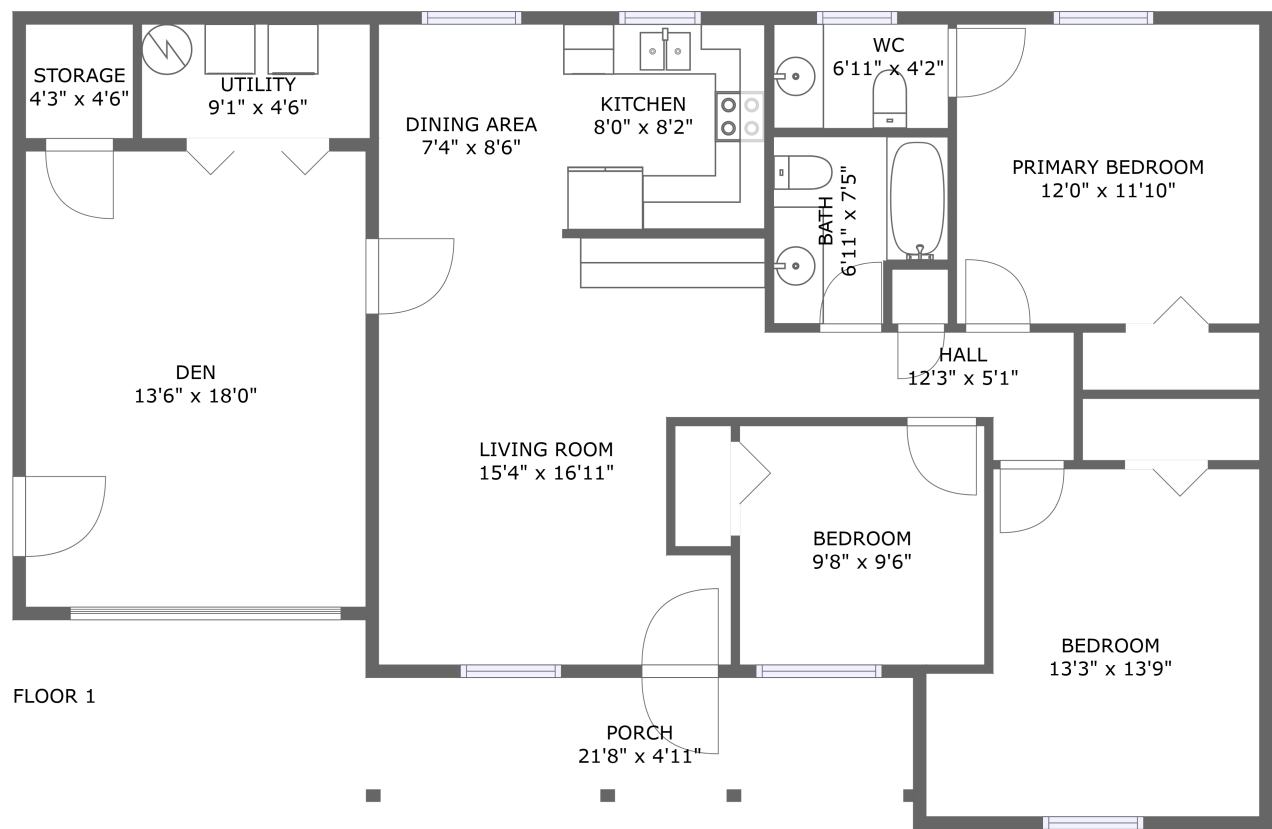


Home report

3318 Danial Street,Conover,North Carolina,United States




Total Area: 1253 sq. ft

Floor 1: 1253 sq. ft

Excluded: Storage 19 sq. ft, Porch 107 sq. ft, Walls: 98 sq. ft

Property summary

 1 Floors

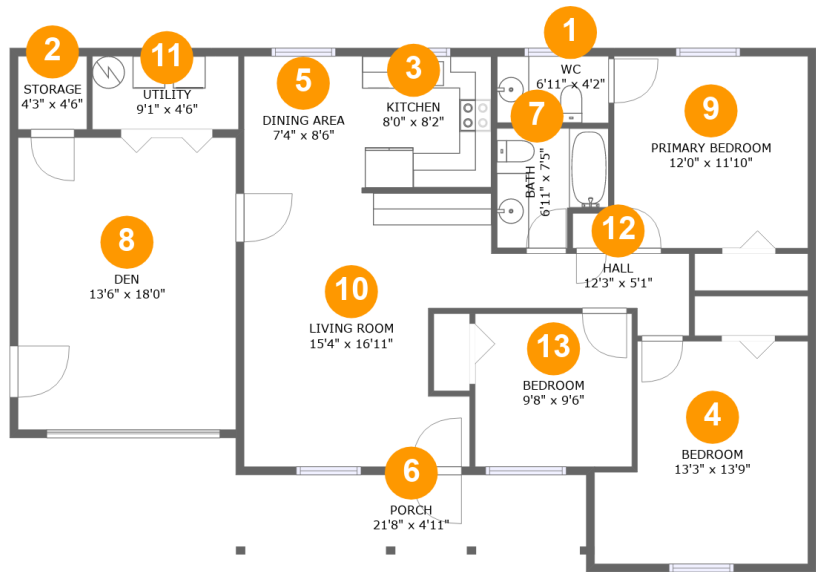
 3 Bedrooms

 1 Bathrooms

 1 Half baths

Home report

3318 Danial Street,Conover,North Carolina,United States



Room dimensions

Floor 1

Total:1253sqft

Excluded: 126sqft

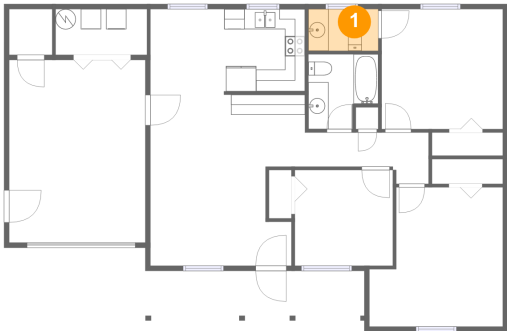
#		Max Dimensions	sqft	Included
1	WC	6'11" x 4'2"	29 sq. ft	Yes
2	Storage	4'3" x 4'6"	19 sq. ft	No
3	Kitchen	8'0" x 8'2"	65 sq. ft	Yes
4	Bedroom	13'3" x 13'9"	161 sq. ft	Yes
5	Dining Area	7'4" x 8'6"	62 sq. ft	Yes
6	Porch	21'8" x 4'11"	107 sq. ft	No
7	Bath	6'11" x 7'5"	45 sq. ft	Yes
8	Den	13'6" x 18'0"	244 sq. ft	Yes
9	Primary Bedroom	12'0" x 11'10"	142 sq. ft	Yes
10	Living Room	15'4" x 16'11"	232 sq. ft	Yes
11	Utility	9'1" x 4'6"	41 sq. ft	Yes

Home report

3318 Danial Street,Conover,North Carolina,United States

#		Max Dimensions	sqft	Included
12	Hall	12'3" x 5'1"	47 sq. ft	Yes
13	Bedroom	9'8" x 9'6"	92 sq. ft	Yes

1 Floor 1 - WC



Max Dimensions: 6'11" x 4'2"
Calculated Area: 29 sq. ft
Included: Yes

Heated: Yes
Finished: Yes
Enclosed: Yes
Contiguous: Yes
Permitted: Yes
Wet space: Yes
Addition: No
Conversion: No

2 Floor 1 - Storage



Max Dimensions: 4'3" x 4'6"
Calculated Area: 19 sq. ft
Included: No

Heated: No
Finished: No
Enclosed: No
Contiguous: Yes
Permitted: Yes
Wet space: No
Addition: No
Conversion: No

3 Floor 1 - Kitchen



Max Dimensions: 8'0" x 8'2"
Calculated Area: 65 sq. ft
Included: Yes

Heated: Yes
Finished: Yes
Enclosed: Yes
Contiguous: Yes
Permitted: Yes
Wet space: No
Addition: No
Conversion: No

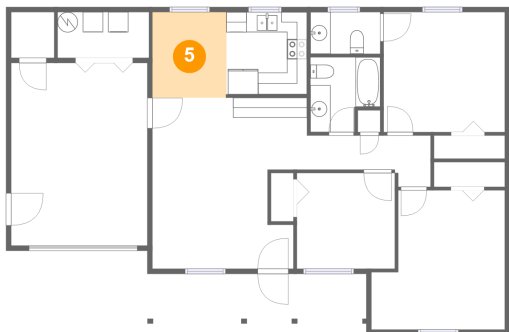
4 Floor 1 - Bedroom



Max Dimensions: 13'3" x 13'9"
Calculated Area: 161 sq. ft
Included: Yes

Heated: Yes
Finished: Yes
Enclosed: Yes
Contiguous: Yes
Permitted: Yes
Wet space: No
Addition: No
Conversion: No

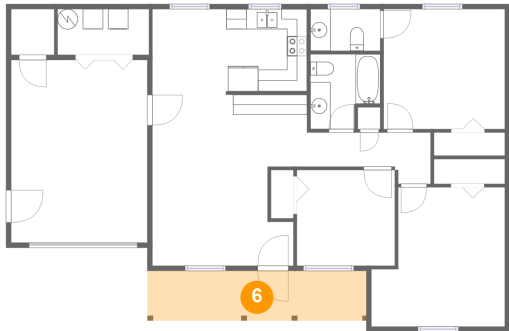
5 Floor 1 - Dining Area



Max Dimensions: 7'4" x 8'6"
Calculated Area: 62 sq. ft
Included: Yes

Heated: Yes
Finished: Yes
Enclosed: Yes
Contiguous: Yes
Permitted: Yes
Wet space: No
Addition: No
Conversion: No

6 Floor 1 - Porch



Max Dimensions: 21'8" x 4'11"
Calculated Area: 107 sq. ft
Included: No

Heated: No
Finished: Yes
Enclosed: No
Contiguous: Yes
Permitted: Yes
Wet space: No
Addition: No
Conversion: No

7 Floor 1 - Bath



Max Dimensions: 6'11" x 7'5"
Calculated Area: 45 sq. ft
Included: Yes

Heated: Yes
Finished: Yes
Enclosed: Yes
Contiguous: Yes
Permitted: Yes
Wet space: Yes
Addition: No
Conversion: No

8 Floor 1 - Den



Max Dimensions: 13'6" x 18'0"
Calculated Area: 244 sq. ft
Included: Yes

Heated: Yes
Finished: Yes
Enclosed: Yes
Contiguous: Yes
Permitted: Yes
Wet space: No
Addition: No
Conversion: No

9 Floor 1 - Primary Bedroom



Max Dimensions: 12'0" x 11'10"
Calculated Area: 142 sq. ft
Included: Yes

Heated: Yes
Finished: Yes
Enclosed: Yes
Contiguous: Yes
Permitted: Yes
Wet space: No
Addition: No
Conversion: No

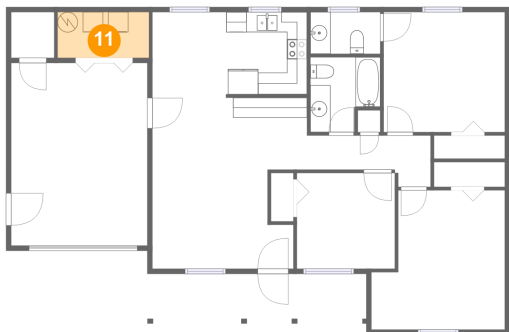
10 Floor 1 - Living Room



Max Dimensions: 15'4" x 16'11"
Calculated Area: 232 sq. ft
Included: Yes

Heated: Yes
Finished: Yes
Enclosed: Yes
Contiguous: Yes
Permitted: Yes
Wet space: No
Addition: No
Conversion: No

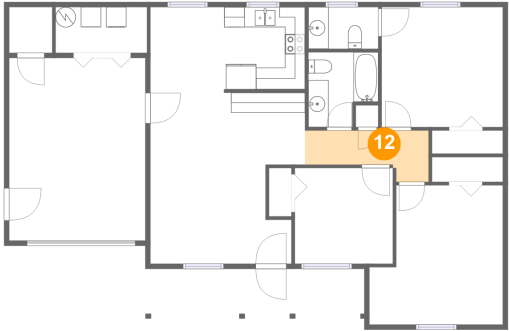
11 Floor 1 - Utility



Max Dimensions: 9'1" x 4'6"
Calculated Area: 41 sq. ft
Included: Yes

Heated: Yes
Finished: Yes
Enclosed: Yes
Contiguous: Yes
Permitted: Yes
Wet space: No
Addition: No
Conversion: No

12 Floor 1 - Hall



Max Dimensions: 12'3" x 5'1"
Calculated Area: 47 sq. ft
Included: Yes

Heated: Yes
Finished: Yes
Enclosed: Yes
Contiguous: Yes
Permitted: Yes
Wet space: No
Addition: No
Conversion: No

13 Floor 1 - Bedroom



Max Dimensions: 9'8" x 9'6"
Calculated Area: 92 sq. ft
Included: Yes

Heated: Yes
Finished: Yes
Enclosed: Yes
Contiguous: Yes
Permitted: Yes
Wet space: No
Addition: No
Conversion: No