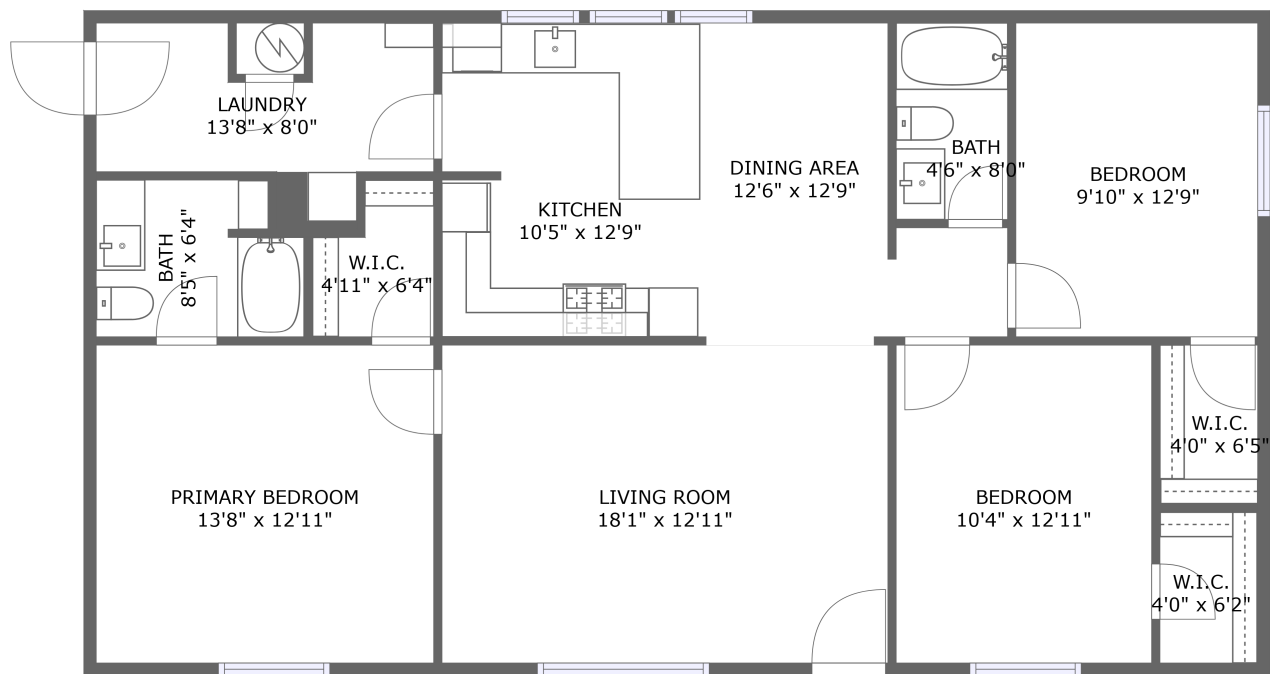


Home report

1641 N Ames St,Spearfish,SD,US



FLOOR 1

Total Area: 1216 sq. ft

Floor 1: 1216 sq. ft

Excluded: Undefined 6 sq. ft, Walls: 74 sq. ft

Property summary

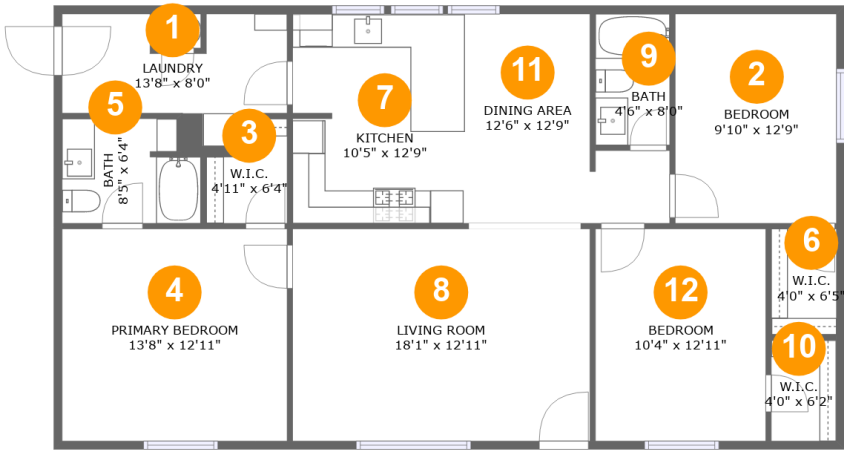
 1 Floors

 3 Bedrooms

 2 Bathrooms

Home report

1641 N Ames St,Spearfish,SD,US



Room dimensions

Floor 1 Total:1216sqft   Excluded: 6sqft

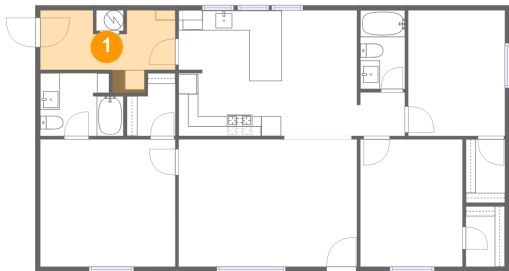
#		Max Dimensions	sqft	Included
1	Laundry	13'8" x 8'0"	82 sq. ft	Yes
2	Bedroom	9'10" x 12'9"	125 sq. ft	Yes
3	W.I.C.	4'11" x 6'4"	26 sq. ft	Yes
4	Primary Bedroom	13'8" x 12'11"	176 sq. ft	Yes
5	Bath	8'5" x 6'4"	50 sq. ft	Yes
6	W.I.C.	4'0" x 6'5"	25 sq. ft	Yes
7	Kitchen	10'5" x 12'9"	132 sq. ft	Yes
8	Living Room	18'1" x 12'11"	233 sq. ft	Yes
9	Bath	4'6" x 8'0"	36 sq. ft	Yes
10	W.I.C.	4'0" x 6'2"	24 sq. ft	Yes
11	Dining Area	12'6" x 12'9"	118 sq. ft	Yes

Home report

1641 N Ames St,Spearfish,SD,US

#		Max Dimensions	sqft	Included
12	Bedroom	10'4" x 12'11"	134 sq. ft	Yes

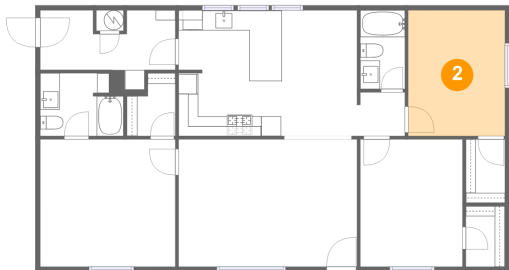
1 Floor 1 - Laundry



Max Dimensions: 13'8" x 8'0"  
Calculated Area: 82 sq. ft  
Included: Yes

Heated: Yes  
Finished: Yes  
Enclosed: Yes  
Contiguous: Yes  
Permitted: Yes  
Wet space: No  
Addition: No  
Conversion: No

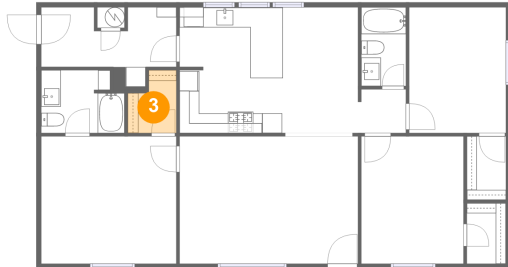
2 Floor 1 - Bedroom



Max Dimensions: 9'10" x 12'9"  
Calculated Area: 125 sq. ft  
Included: Yes

Heated: Yes  
Finished: Yes  
Enclosed: Yes  
Contiguous: Yes  
Permitted: Yes  
Wet space: No  
Addition: No  
Conversion: No

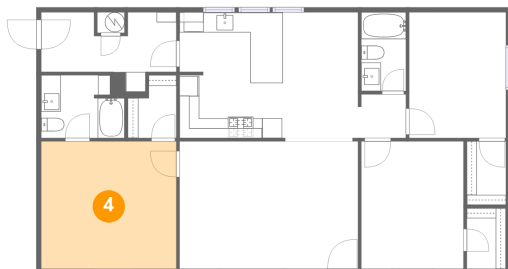
### 3 Floor 1 - W.I.C.



Max Dimensions: 4'11" x 6'4"  
Calculated Area: 26 sq. ft  
Included: Yes

Heated: Yes  
Finished: Yes  
Enclosed: Yes  
Contiguous: Yes  
Permitted: Yes  
Wet space: No  
Addition: No  
Conversion: No

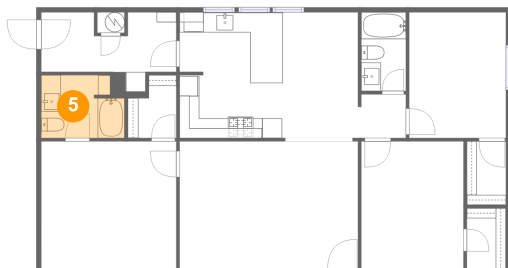
### 4 Floor 1 - Primary Bedroom



Max Dimensions: 13'8" x 12'11"  
Calculated Area: 176 sq. ft  
Included: Yes

Heated: Yes  
Finished: Yes  
Enclosed: Yes  
Contiguous: Yes  
Permitted: Yes  
Wet space: No  
Addition: No  
Conversion: No

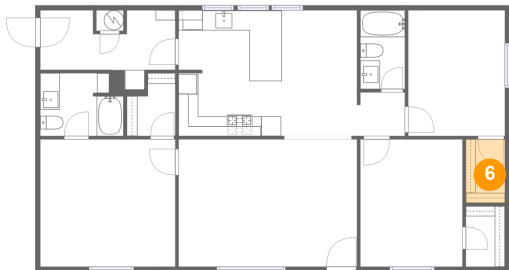
### 5 Floor 1 - Bath



Max Dimensions: 8'5" x 6'4"  
Calculated Area: 50 sq. ft  
Included: Yes

Heated: Yes  
Finished: Yes  
Enclosed: Yes  
Contiguous: Yes  
Permitted: Yes  
Wet space: Yes  
Addition: No  
Conversion: No

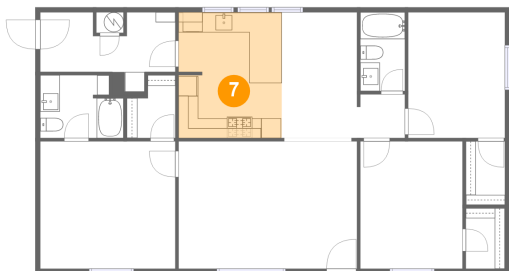
6 Floor 1 - W.I.C.



Max Dimensions: 4'0" x 6'5"  
Calculated Area: 25 sq. ft  
Included: Yes

Heated: Yes  
Finished: Yes  
Enclosed: Yes  
Contiguous: Yes  
Permitted: Yes  
Wet space: No  
Addition: No  
Conversion: No

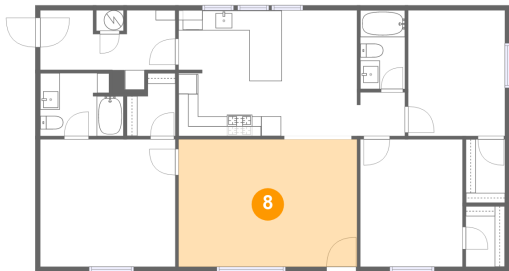
7 Floor 1 - Kitchen



Max Dimensions: 10'5" x 12'9"  
Calculated Area: 132 sq. ft  
Included: Yes

Heated: Yes  
Finished: Yes  
Enclosed: Yes  
Contiguous: Yes  
Permitted: Yes  
Wet space: No  
Addition: No  
Conversion: No

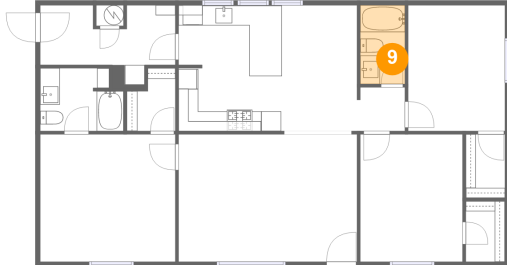
8 Floor 1 - Living Room



Max Dimensions: 18'1" x 12'11"  
Calculated Area: 233 sq. ft  
Included: Yes

Heated: Yes  
Finished: Yes  
Enclosed: Yes  
Contiguous: Yes  
Permitted: Yes  
Wet space: No  
Addition: No  
Conversion: No

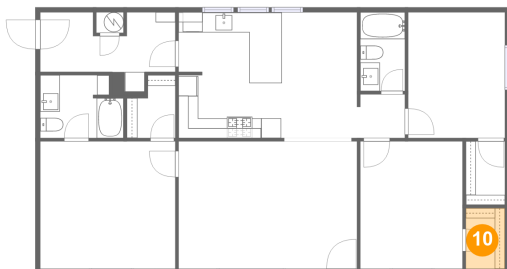
## 9 Floor 1 - Bath



Max Dimensions: 4'6" x 8'0"  
Calculated Area: 36 sq. ft  
Included: Yes

Heated: Yes  
Finished: Yes  
Enclosed: Yes  
Contiguous: Yes  
Permitted: Yes  
Wet space: Yes  
Addition: No  
Conversion: No

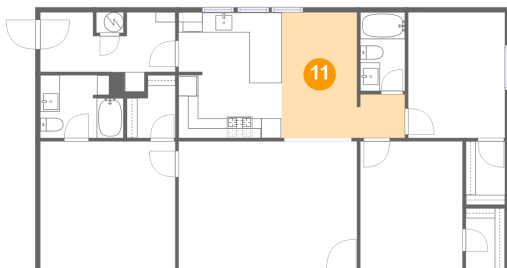
## 10 Floor 1 - W.I.C.



Max Dimensions: 4'0" x 6'2"  
Calculated Area: 24 sq. ft  
Included: Yes

Heated: Yes  
Finished: Yes  
Enclosed: Yes  
Contiguous: Yes  
Permitted: Yes  
Wet space: No  
Addition: No  
Conversion: No

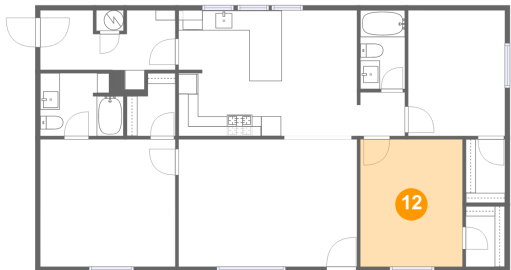
## 11 Floor 1 - Dining Area



Max Dimensions: 12'6" x 12'9"  
Calculated Area: 118 sq. ft  
Included: Yes

Heated: Yes  
Finished: Yes  
Enclosed: Yes  
Contiguous: Yes  
Permitted: Yes  
Wet space: No  
Addition: No  
Conversion: No

12 Floor 1 - Bedroom



Max Dimensions: 10'4" x 12'11"  
Calculated Area: 134 sq. ft  
Included: Yes

Heated: Yes  
Finished: Yes  
Enclosed: Yes  
Contiguous: Yes  
Permitted: Yes  
Wet space: No  
Addition: No  
Conversion: No