

125 23rd Street Southeast, South Roanoke, Roanoke, Roanoke, Virginia, United States,




Property Summary


 **0** garages

 **4** bedrooms

 **2** bathrooms

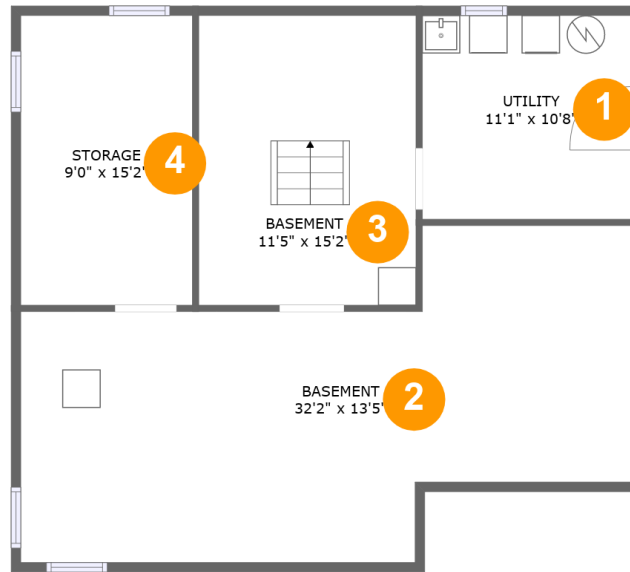
 **0** half baths

 **3** floors

 **1,848** Gross Living Area sqft

 **3,251** total sqft

125 23rd Street Southeast, South Roanoke, Roanoke, Roanoke, Virginia, United States,



Room Dimensions

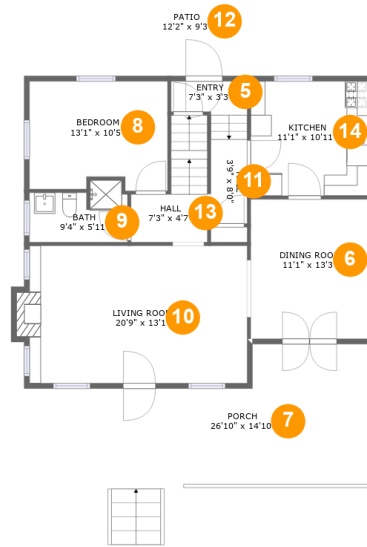
Floor 1

Total sqft: 938

Living area: 194

#	Room name	Dimensions	Area (sqft)	Counted as Living Area
1	Utility	11'1" x 10'8"	118 sq. ft	No
2	Basement	32'2" x 13'5"	425 sq. ft	No
3	Basement	11'5" x 15'2"	173 sq. ft	Yes
4	Storage	9'0" x 15'2"	137 sq. ft	No

125 23rd Street Southeast, South Roanoke, Roanoke, Roanoke, Virginia, United States,



Room Dimensions

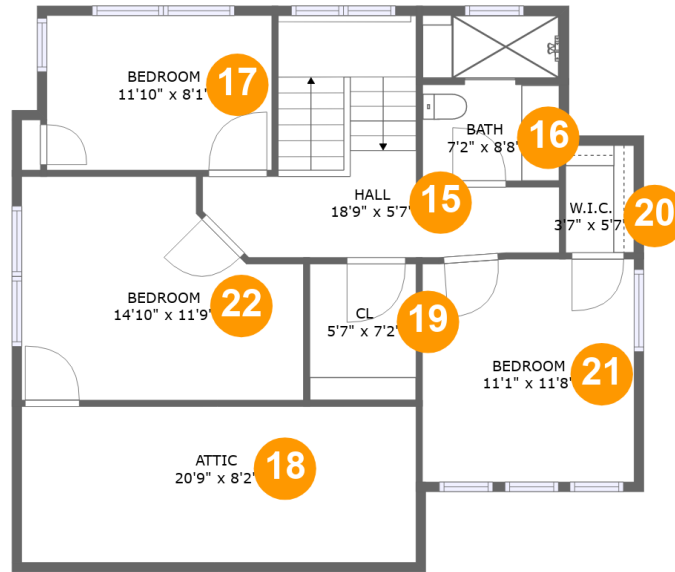
Floor 2

Total sqft: 1409

Living area: 937

#	Room name	Dimensions	Area (sqft)	Counted as Living Area
5	Entry	7'3" x 3'3"	22 sq. ft	Yes
6	Dining Room	11'1" x 13'3"	148 sq. ft	Yes
7	Porch	26'10" x 14'10"	353 sq. ft	No
8	Bedroom	13'1" x 10'5"	131 sq. ft	Yes
9	Bath	9'4" x 5'11"	47 sq. ft	Yes
10	Living Room	20'9" x 13'1"	276 sq. ft	Yes
11	Hall	3'9" x 8'0"	37 sq. ft	Yes
12	Patio	12'2" x 9'3"	112 sq. ft	No
13	Hall	7'3" x 4'7"	59 sq. ft	Yes
14	Kitchen	11'1" x 10'11"	121 sq. ft	Yes

125 23rd Street Southeast, South Roanoke, Roanoke, Roanoke, Virginia, United States,



Room Dimensions

Floor 3

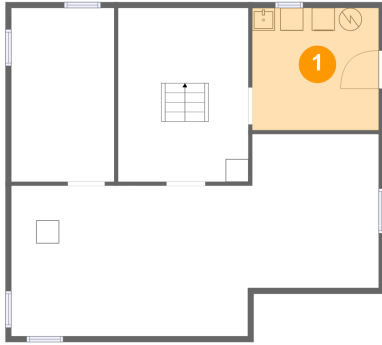
Total sqft: 904

Living area: 717

#	Room name	Dimensions	Area (sqft)	Counted as Living Area
15	Hall	18'9" x 5'7"	133 sq. ft	Yes
16	Bath	7'2" x 8'8"	61 sq. ft	Yes
17	Bedroom	11'10" x 8'1"	96 sq. ft	Yes
18	Attic	20'9" x 8'2"	35 sq. ft	No
19	Cl	5'7" x 7'2"	40 sq. ft	Yes
20	W.i.c.	3'7" x 5'7"	20 sq. ft	Yes
21	Bedroom	11'1" x 11'8"	129 sq. ft	Yes
22	Bedroom	14'10" x 11'9"	151 sq. ft	Yes

125 23rd Street Southeast, South Roanoke, Roanoke, Roanoke, Virginia, United States,

1 Floor 1 - Utility



Dimensions: 11'1" x 10'8"
Area: 118 sq. ft
Counted as Living Area: No

Heated: Yes
Finished: No
Enclosed: Yes
Contiguous: Yes
Permitted: Yes
Wet Space: No
Addition: No
Conversion: No

2 Floor 1 - Basement

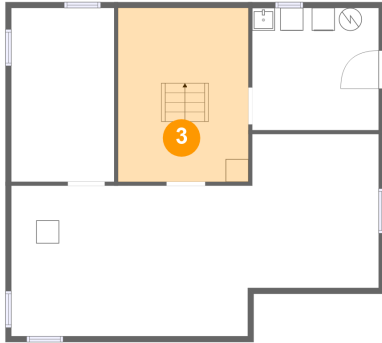


Dimensions: 32'2" x 13'5"
Area: 425 sq. ft
Counted as Living Area: No

Heated: Yes
Finished: No
Enclosed: Yes
Contiguous: Yes
Permitted: Yes
Wet Space: No
Addition: No
Conversion: No

125 23rd Street Southeast, South Roanoke, Roanoke, Roanoke, Virginia, United States,

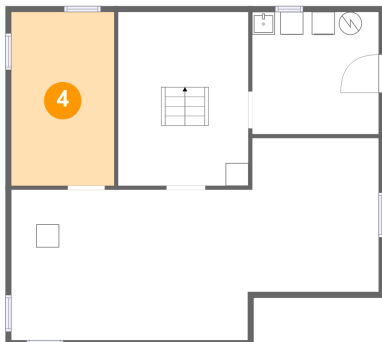
3 Floor 1 - Basement



Dimensions: 11'5" x 15'2"
Area: 173 sq. ft
Counted as Living Area:
Yes

Heated: Yes
Finished: Yes
Enclosed: Yes
Contiguous:
Yes
Permitted: Yes
Wet Space: No
Addition: No
Conversion: No

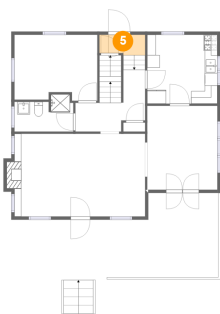
4 Floor 1 - Storage



Dimensions: 9'0" x 15'2"
Area: 137 sq. ft
Counted as Living Area: No

Heated: No
Finished: No
Enclosed: No
Contiguous: Yes
Permitted: Yes
Wet Space: No
Addition: No
Conversion: No

5 Floor 2 - Entry

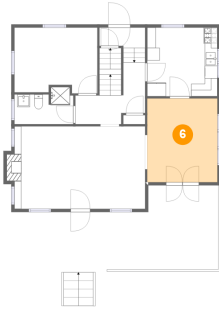


Dimensions: 7'3" x 3'3"
Area: 22 sq. ft
Counted as Living Area:
Yes

Heated: Yes
Finished: Yes
Enclosed: Yes
Contiguous:
Yes
Permitted: Yes
Wet Space: No
Addition: No
Conversion: No

**125 23rd Street Southeast, South Roanoke,
Roanoke, Roanoke, Virginia, United States,**

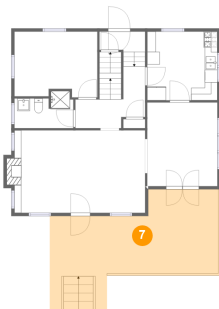
6 Floor 2 - Dining Room



Dimensions: 11'1" x 13'3"
Area: 148 sq. ft
Counted as Living Area:
Yes

Heated: Yes
Finished: Yes
Enclosed: Yes
Contiguous:
Yes
Permitted: Yes
Wet Space: No
Addition: No
Conversion: No

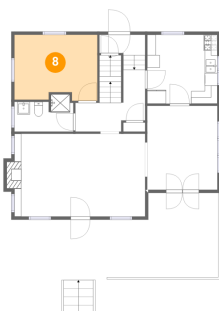
7 Floor 2 - Porch



Dimensions: 26'10" x 14'10"
Area: 353 sq. ft
Counted as Living Area: No

Heated: No
Finished: Yes
Enclosed: No
Contiguous: Yes
Permitted: Yes
Wet Space: No
Addition: No
Conversion: No

8 Floor 2 - Bedroom

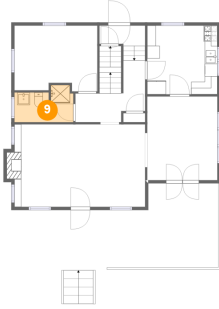


Dimensions: 13'1" x 10'5"
Area: 131 sq. ft
Counted as Living Area:
Yes

Heated: Yes
Finished: Yes
Enclosed: Yes
Contiguous:
Yes
Permitted: Yes
Wet Space: No
Addition: No
Conversion: No

**125 23rd Street Southeast, South Roanoke,
Roanoke, Roanoke, Virginia, United States,**

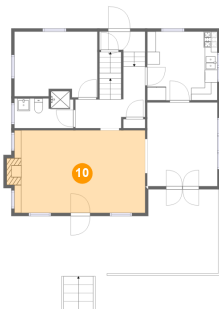
9 Floor 2 - Bath



Dimensions: 9'4" x 5'11"
Area: 47 sq. ft
Counted as Living Area:
Yes

Heated: Yes
Finished: Yes
Enclosed: Yes
Contiguous:
Yes
Permitted: Yes
Wet Space: Yes
Addition: No
Conversion: No

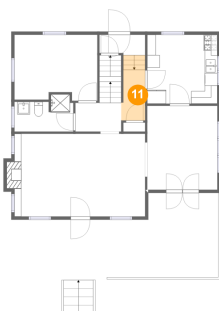
10 Floor 2 - Living Room



Dimensions: 20'9" x 13'1"
Area: 276 sq. ft
Counted as Living Area:
Yes

Heated: Yes
Finished: Yes
Enclosed: Yes
Contiguous:
Yes
Permitted: Yes
Wet Space: No
Addition: No
Conversion: No

11 Floor 2 - Hall



Dimensions: 3'9" x 8'0"
Area: 37 sq. ft
Counted as Living Area:
Yes

Heated: Yes
Finished: Yes
Enclosed: Yes
Contiguous:
Yes
Permitted: Yes
Wet Space: No
Addition: No
Conversion: No

125 23rd Street Southeast, South Roanoke, Roanoke, Roanoke, Virginia, United States,

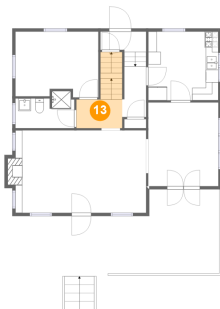
12 Floor 2 - Patio



Dimensions: 12'2" x 9'3"
Area: 112 sq. ft
Counted as Living Area: No

Heated: No
Finished: Yes
Enclosed: No
Contiguous: Yes
Permitted: Yes
Wet Space: No
Addition: No
Conversion: No

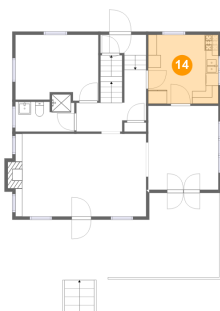
13 Floor 2 - Hall



Dimensions: 7'3" x 4'7"
Area: 59 sq. ft
Counted as Living Area:
Yes

Heated: Yes
Finished: Yes
Enclosed: Yes
Contiguous:
Yes
Permitted: Yes
Wet Space: No
Addition: No
Conversion: No

14 Floor 2 - Kitchen

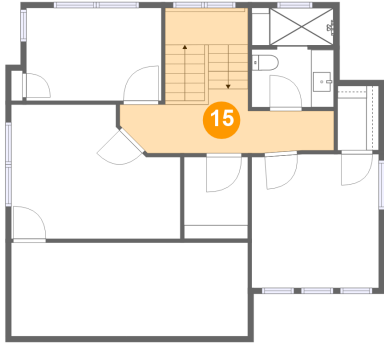


Dimensions: 11'1" x 10'11"
Area: 121 sq. ft
Counted as Living Area:
Yes

Heated: Yes
Finished: Yes
Enclosed: Yes
Contiguous:
Yes
Permitted: Yes
Wet Space: No
Addition: No
Conversion: No

**125 23rd Street Southeast, South Roanoke,
Roanoke, Roanoke, Virginia, United States,**

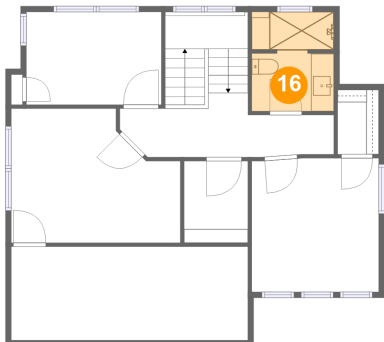
15 Floor 3 - Hall



Dimensions: 18'9" x 5'7"
Area: 133 sq. ft
Counted as Living Area:
Yes

Heated: Yes
Finished: Yes
Enclosed: Yes
Contiguous:
Yes
Permitted: Yes
Wet Space: No
Addition: No
Conversion: No

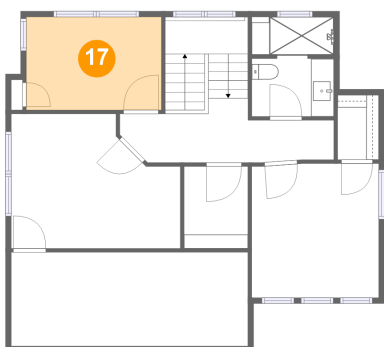
16 Floor 3 - Bath



Dimensions: 7'2" x 8'8"
Area: 61 sq. ft
Counted as Living Area:
Yes

Heated: Yes
Finished: Yes
Enclosed: Yes
Contiguous:
Yes
Permitted: Yes
Wet Space: Yes
Addition: No
Conversion: No

17 Floor 3 - Bedroom

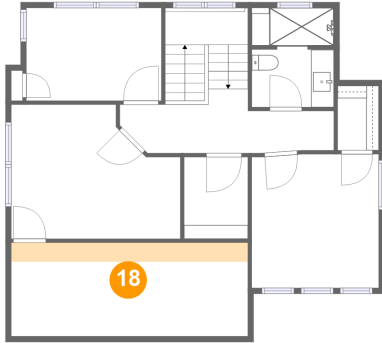


Dimensions: 11'10" x 8'1"
Area: 96 sq. ft
Counted as Living Area:
Yes

Heated: Yes
Finished: Yes
Enclosed: Yes
Contiguous:
Yes
Permitted: Yes
Wet Space: No
Addition: No
Conversion: No

**125 23rd Street Southeast, South Roanoke,
Roanoke, Roanoke, Virginia, United States,**

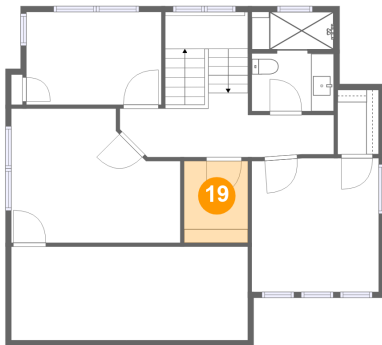
18 Floor 3 - Attic



Dimensions: 20'9" x 8'2"
Area: 35 sq. ft
Counted as Living Area: No

Heated: No
Finished: No
Enclosed: Yes
Contiguous: Yes
Permitted: Yes
Wet Space: No
Addition: No
Conversion: No

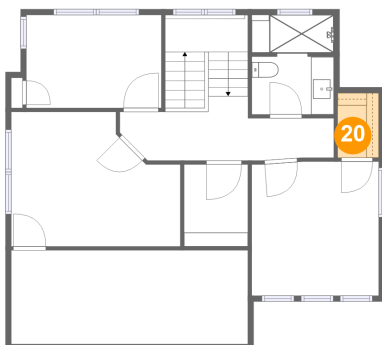
19 Floor 3 - Cl



Dimensions: 5'7" x 7'2"
Area: 40 sq. ft
Counted as Living Area:
Yes

Heated: Yes
Finished: Yes
Enclosed: Yes
Contiguous:
Yes
Permitted: Yes
Wet Space: No
Addition: No
Conversion: No

20 Floor 3 - W.i.c.

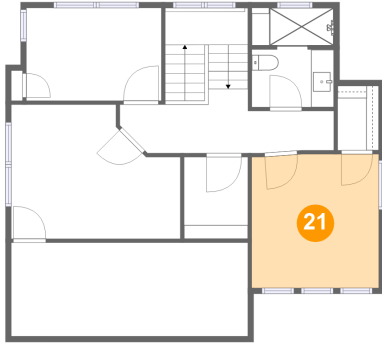


Dimensions: 3'7" x 5'7"
Area: 20 sq. ft
Counted as Living Area:
Yes

Heated: Yes
Finished: Yes
Enclosed: Yes
Contiguous:
Yes
Permitted: Yes
Wet Space: No
Addition: No
Conversion: No

**125 23rd Street Southeast, South Roanoke,
Roanoke, Roanoke, Virginia, United States,**

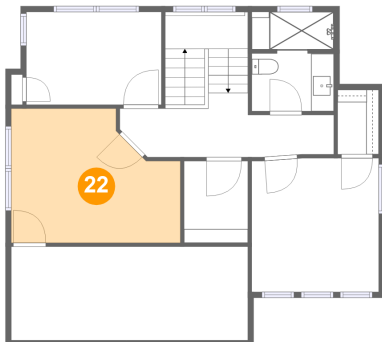
21 Floor 3 - Bedroom



Dimensions: 11'1" x 11'8"
Area: 129 sq. ft
Counted as Living Area:
Yes

Heated: Yes
Finished: Yes
Enclosed: Yes
Contiguous:
Yes
Permitted: Yes
Wet Space: No
Addition: No
Conversion: No

22 Floor 3 - Bedroom



Dimensions: 14'10" x 11'9"
Area: 151 sq. ft
Counted as Living Area:
Yes

Heated: Yes
Finished: Yes
Enclosed: Yes
Contiguous:
Yes
Permitted: Yes
Wet Space: No
Addition: No
Conversion: No