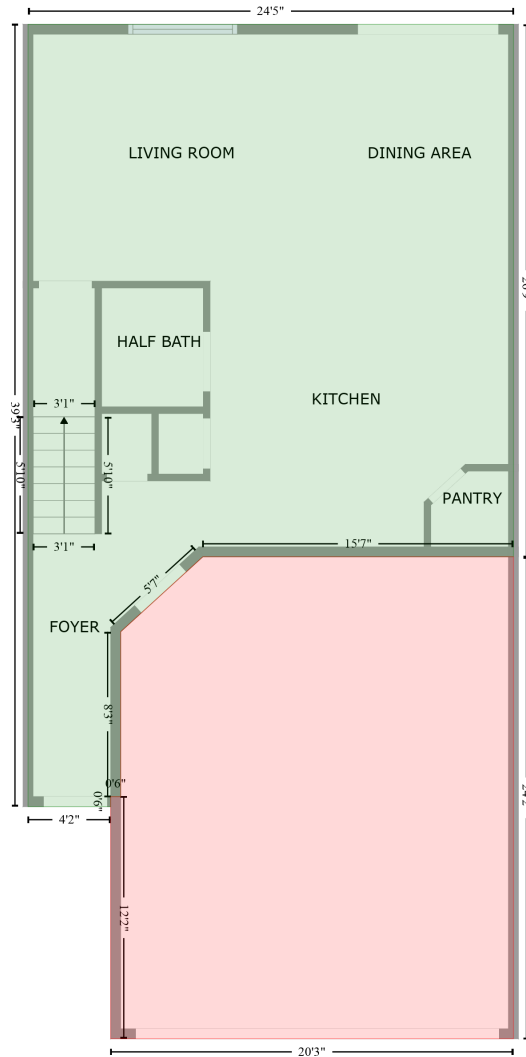


200 W 1200 S,38,Tremonton,UT,US, 38

Gross Living Area: 1609 sq. ft

FLOOR 1
[AREA: 717]



GARAGE (1)
[AREA: 475]

Space	Area (sq. ft)	Calculation <small>Coordinate Polygon Area Algorithm using inches</small>
FLOOR 1 (Living area)	717	$-((347.5 + 347.5) * (57.8 - 378.4) + (347.5 + 160.2) * (378.4 - 378.4) + (160.2 + 110.7) * (378.4 - 423.5) + (110.7 + 110.7) * (423.5 - 522.8) + (110.7 + 104.7) * (522.8 - 522.8) + (104.7 + 104.7) * (522.8 - 528.8) + (104.7 + 54.9) * (528.8 - 528.8) + (54.9 + 54.9) * (528.8 - 57.8) + (54.9 + 347.5) * (57.8 - 57.8)) * 0.5 + 0.00694$
GARAGE (Non-living area)	475	$-((347.5 + 347.5) * (378.4 - 668.6) + (347.5 + 104.7) * (668.6 - 668.6) + (104.7 + 104.7) * (668.6 - 522.8) + (104.7 + 110.7) * (522.8 - 522.8) + (110.7 + 110.7) * (522.8 - 423.5) + (110.7 + 160.2) * (423.5 - 423.5)) * 0.5 + 0.00694$

200 W 1200 S,38,Tremonton,UT,US, 38

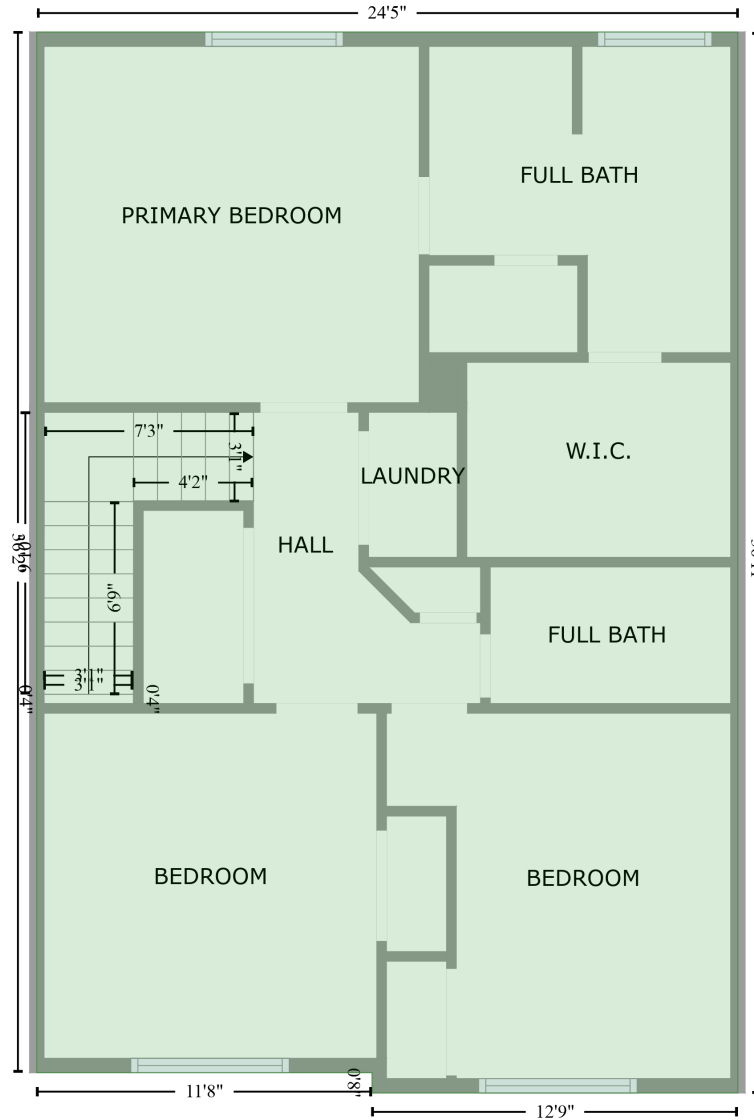
Gross Living Area: 1609 sq. ft

Space	Area (sq. ft)	Calculation <small>Coordinate Polygon Area Algorithm using inches</small>
		$(423.5 - 378.4) + (160.2 + 347.5) * (378.4 - 378.4) * 0.5 * 0.00694$

200 W 1200 S,38,Tremonton,UT,US, 38

Gross Living Area: 1609 sq. ft

FLOOR 2
[AREA: 892]



Space	Area (sq. ft)	Calculation <small>Coordinate Polygon Area Algorithm using inches</small>
FLOOR 2 (Living area)	892	$-((347.5 + 347.5) * (57.8 - 500.7) + (347.5 + 194.8) * (500.7 - 500.7) + (194.8 + 194.8) * (500.7 - 492.2) + (194.8 + 54.9) * (492.2 - 492.2) + (54.9 + 54.9) * (492.2 - 57.8) + (54.9 + 347.5) * (57.8 - 57.8)) * 0.5 + 0.00694$