

31920 Mayne Ave

Abbotsford BC V2T 4W9

Lower Level Area: 793 SQ.FT.

Upper Level Area: 1,000 SQ.FT.

Total Area 1,793 SQ.FT.

3



BEDROOMS

2

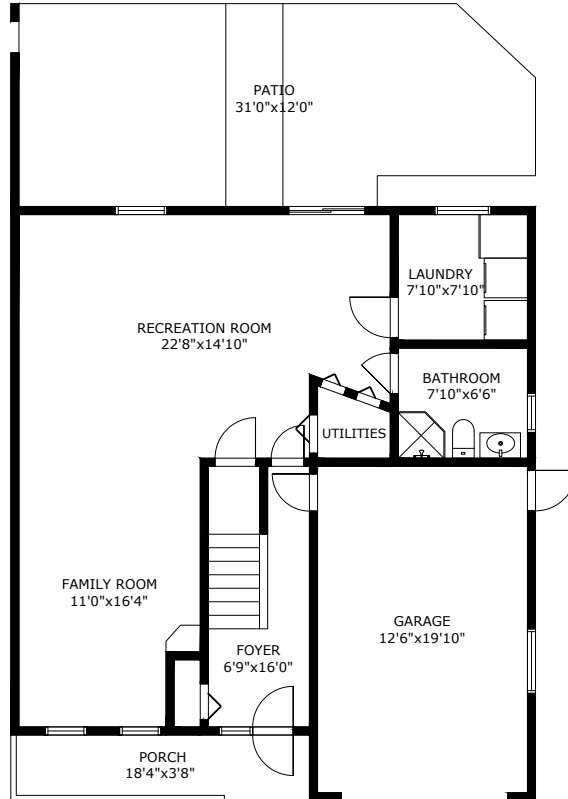


BATHROOMS

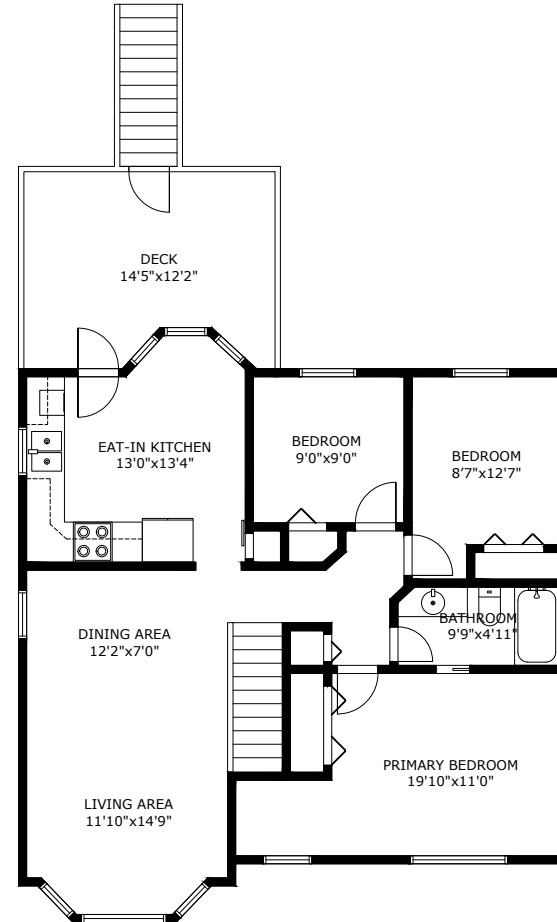
1,793



TOTAL SQ.FT.



Lower Level Area:
Ceiling Height: 8'0"



Upper Level Area:
Ceiling Height: 8'0"

31920 MAYNE AVE ABBOTSFORD BC V2T 4W9

Measurements are approximate and may not be to scale. Gross measurements as per BCASSESSMENT
The floor plan illustration is not suitable for construction/architectural purposes.
This communication is not intended to cause or induce breach of an existing agency agreement

3D IMMERSIVE
Tours Photos Floor Plans

Professionally measured by 3D Immersive Marketing Ltd.

Lead Floor Planner: *Sara Alexander*
Quality Assurance: *Dianne Graham*