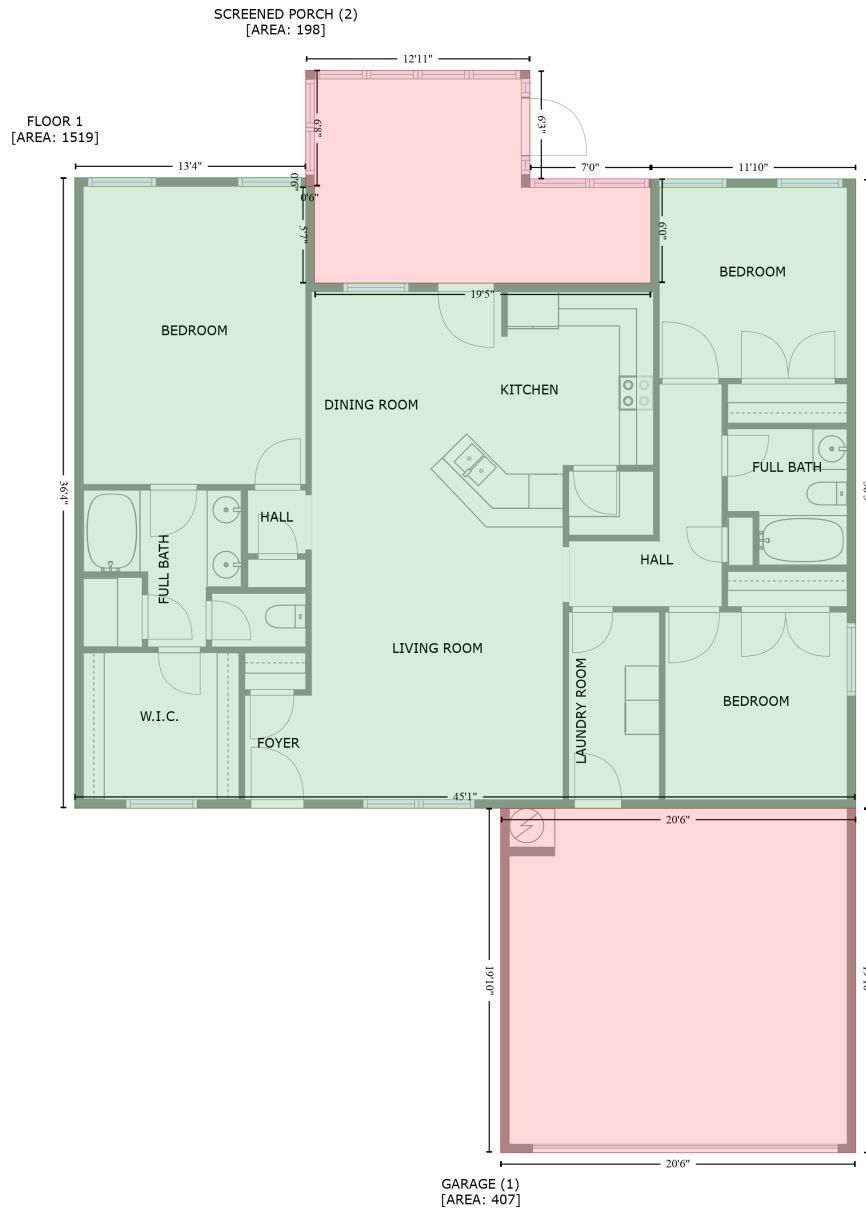


217 Wilcot Road, Meridianville, Madison County, Alabama, United States, 35759

Gross Living Area: 1519 sq. ft



Space	Area (sq. ft)	Calculation <small>Coordinate Polygon Area Algorithm using inches</small>
FLOOR 1 (Living area)	1519	$-((157.5 + 163.5) * (107.9 - 107.9) + (163.5 + 163.5) * (107.9 - 174.7) + (163.5 + 396.4) * (174.7 - 174.7) + (396.4 + 396.4) * (174.7 - 102.7) + (396.4 + 538.3) * (102.7 - 102.7) + (538.3 + 538.3) * (102.7 - 537.9) + (538.3 + -2.5) * (537.9 - 537.9) + (-2.5 + -2.5) * (537.9 - 101.9) + (-2.5 + 157.5) * (101.9 - 101.9) + (157.5 + 157.5) * (101.9 - 107.9)) * 0.5 * 0.00694$
GARAGE (Non-living area)	407	$-((538.3 + 538.3) * (537.9 - 776.1) + (538.3 + 292.4) * (776.1 - 776.1) + (292.4 + 292.4) * (776.1 - 537.9) + (292.4 + 538.3) * (537.9 - 537.9)) * 0.5 * 0.00694$

217 Wilcot Road, Meridianville, Madison County, Alabama, United States, 35759

Gross Living Area: 1519 sq. ft

Space	Area (sq. ft)	Calculation <small>Coordinate Polygon Area Algorithm using inches</small>
SCREENED PORCH (Non-living area)	198	$-\left((312.7 + 312.7) * (27.6 - 102.7) + (312.7 + 396.4) * (102.7 - 102.7) + (396.4 + 396.4) * (102.7 - 174.7) + (396.4 + 163.5) * (174.7 - 174.7) + (163.5 + 163.5) * (174.7 - 107.9) + (163.5 + 157.5) * (107.9 - 107.9) + (157.5 + 157.5) * (107.9 - 27.6) + (157.5 + 312.7) * (27.6 - 27.6)\right) * 0.5 * 0.00694$