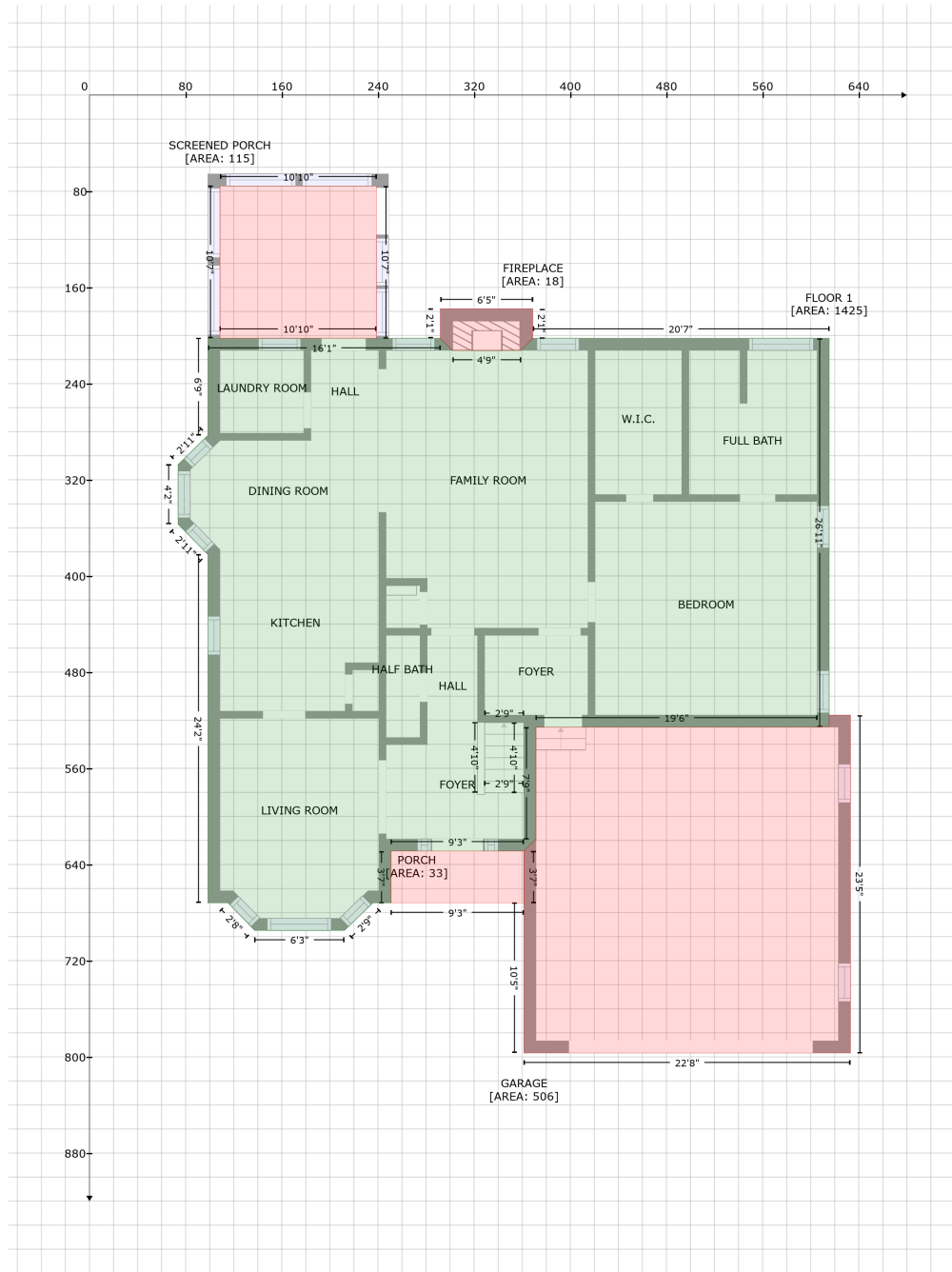


Lagenaria Dr 7913, Angier, NC, United States

Gross Living Area: 2370 sq. ft



Space	Area (sq. ft)	Calculation <small>Coordinate Polygon Area Algorithm using inches</small>
FLOOR 1 (Living area)	1425	$ \begin{aligned} & -((291.9 + 301.9) * (202.3 - 212.3) + (301.9 + 358.8) * (212.3 - 212.3) + (358.8 + 368.8) * (212.3 - \\ & 202.3) + (368.8 + 615.4) * (202.3 - 202.3) + (615.4 + 615.4) * (202.3 - 525.3) + (615.4 + 605.7) * \\ & (525.3 - 525.3) + (605.7 + 605.7) * (525.3 - 525.8) + (605.7 + 371.4) * (525.8 - 525.8) + (371.4 + \\ & 371.4) * (525.8 - 618.8) + (371.4 + 361.4) * (618.8 - 628.8) + (361.4 + 250.8) * (628.8 - 628.8) + \\ & (250.8 + 250.8) * (628.8 - 671.9) + (250.8 + 235.8) * (671.9 - 671.9) + (235.8 + 212.2) * (671.9 - \\ & 694.8) + (212.2 + 137.4) * (694.8 - 694.8) + (137.4 + 115.3) * (694.8 - 671.9) + (115.3 + 98.5) * \\ & (671.9 - 671.9) + (98.5 + 98.5) * (671.9 - 382.1) + (98.5 + 73.7) * (382.1 - 357) + (73.7 + 73.7) * \end{aligned} $

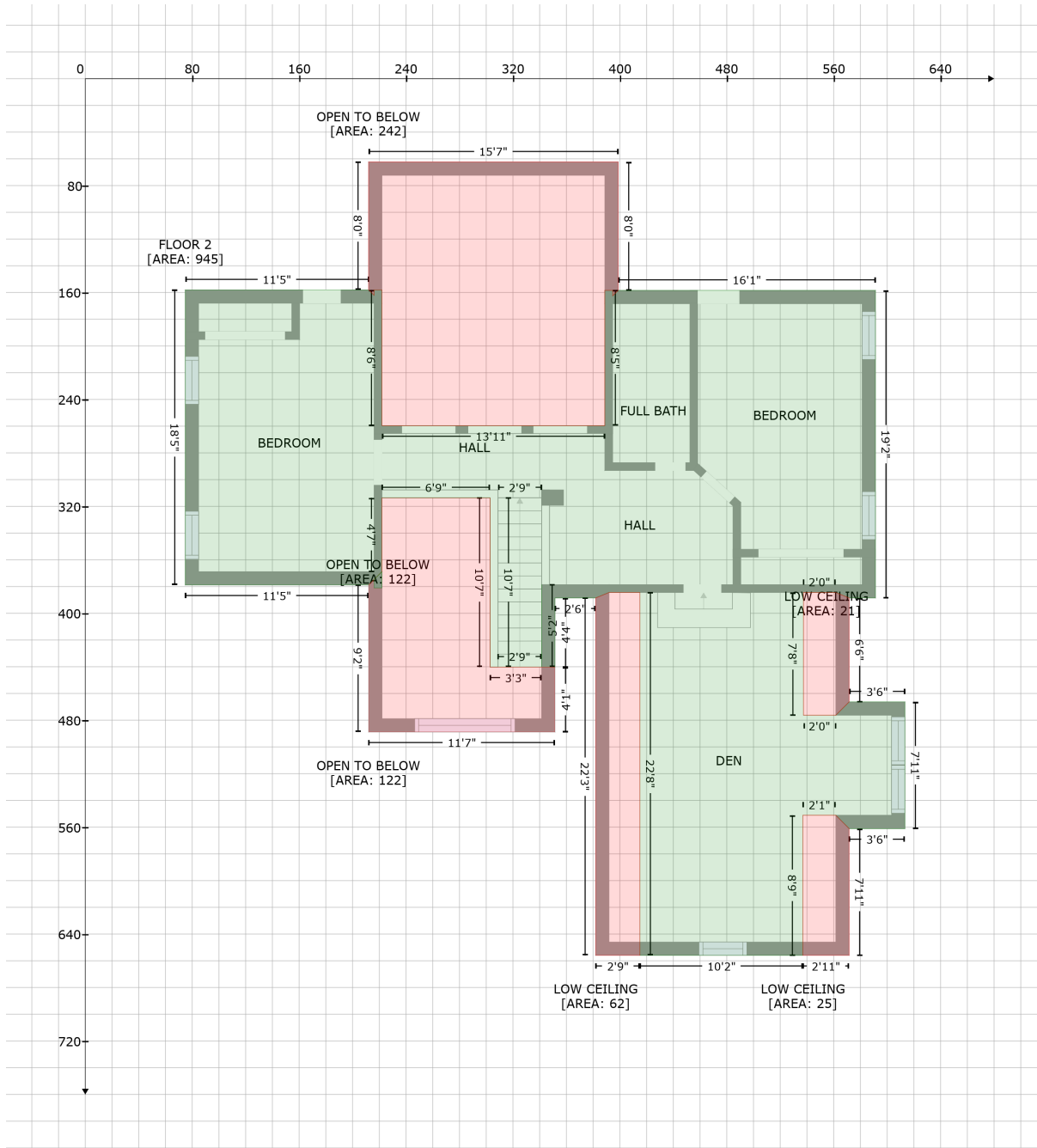
Lagenaria Dr 7913, Angier, NC, United States

Gross Living Area: 2370 sq. ft

Space	Area (sq. ft)	Calculation <small>Coordinate Polygon Area Algorithm using inches</small>
		$(357 - 307.4) + (73.7 + 98.5) * (307.4 - 283.1) + (98.5 + 98.5) * (283.1 - 202.3) + (98.5 + 291.9) * (202.3 - 202.3)) * 0.5 * 0.00694$
SCREENED PORCH (Non-living area)	115	$-((238.8 + 238.8) * (75.6 - 202.3) + (238.8 + 108.5) * (202.3 - 202.3) + (108.5 + 108.5) * (202.3 - 75.6) + (108.5 + 238.8) * (75.6 - 75.6)) * 0.5 * 0.00694$
PORCH (Non-living area)	33	$-((361.4 + 361.6) * (628.8 - 671.9) + (361.6 + 250.8) * (671.9 - 671.9) + (250.8 + 250.8) * (671.9 - 628.8) + (250.8 + 361.4) * (628.8 - 628.8)) * 0.5 * 0.00694$
GARAGE (Non-living area)	506	$-((633.1 + 633.1) * (515.8 - 796.7) + (633.1 + 361.4) * (796.7 - 796.7) + (361.4 + 361.4) * (796.7 - 671.9) + (361.4 + 361.6) * (671.9 - 671.9) + (361.6 + 361.4) * (671.9 - 628.8) + (361.4 + 371.4) * (628.8 - 618.8) + (371.4 + 371.4) * (618.8 - 525.8) + (371.4 + 605.7) * (525.8 - 525.8) + (605.7 + 605.7) * (525.8 - 525.3) + (605.7 + 615.4) * (525.3 - 525.3) + (615.4 + 615.4) * (525.3 - 515.8) + (615.4 + 633.1) * (515.8 - 515.8)) * 0.5 * 0.00694$
FIREPLACE (Non-living area)	18	$-((368.8 + 368.8) * (177.8 - 202.3) + (368.8 + 358.8) * (202.3 - 212.3) + (358.8 + 301.9) * (212.3 - 212.3) + (301.9 + 291.9) * (212.3 - 202.3) + (291.9 + 291.9) * (202.3 - 177.8) + (291.9 + 368.8) * (177.8 - 177.8)) * 0.5 * 0.00694$

Lagenaria Dr 7913, Angier, NC, United States

Gross Living Area: 2370 sq. ft



Space

Area (sq. ft)

Calculation Coordinate Polygon Area Algorithm using inches

FLOOR 2
(Living area)

945

$$\begin{aligned}
 & -((212 + 216.1) * (158 - 162.1) + (216.1 + 216.1) * (162.1 - 158) + (216.1 + 222) * (158 - 158) + \\
 & (222 + 222) * (158 - 259.7) + (222 + 388.7) * (259.7 - 259.7) + (388.7 + 388.7) * (259.7 - 158.4) + \\
 & (388.7 + 394.6) * (158.4 - 158.4) + (394.6 + 394.6) * (158.4 - 162.5) + (394.6 + 398.8) * (162.5 - \\
 & 158.4) + (398.8 + 591.3) * (158.4 - 158.4) + (591.3 + 591.3) * (158.4 - 388.5) + (591.3 + 571.6) * \\
 & (388.5 - 388.5) + (571.6 + 561.6) * (388.5 - 384.4) + (561.6 + 537.4) * (384.4 - 384.4) + (537.4 + \\
 & 537.4) * (384.4 - 476.3) + (537.4 + 561.6) * (476.3 - 476.3) + (561.6 + 571.6) * (476.3 - 466.3) + \\
 & (571.6 + 613.3) * (466.3 - 466.3) + (613.3 + 613.3) * (466.3 - 561.1) + (613.3 + 571.6) * (561.1 -
 \end{aligned}$$

Lagenaria Dr 7913, Angier, NC, United States

Gross Living Area: 2370 sq. ft

Space	Area (sq. ft)	Calculation <small>Coordinate Polygon Area Algorithm using inches</small>
		$561.1) + (571.6 + 561.6) * (561.1 - 551.1) + (561.6 + 537) * (551.1 - 551.1) + (537 + 537) * (551.1 - 656) + (537 + 415) * (656 - 656) + (415 + 415) * (656 - 384.4) + (415 + 391.9) * (384.4 - 384.4) + (391.9 + 381.9) * (384.4 - 388.5) + (381.9 + 351.5) * (388.5 - 388.5) + (351.5 + 351.5) * (388.5 - 440.3) + (351.5 + 341.5) * (440.3 - 440.3) + (341.5 + 341.5) * (440.3 - 378.5) + (341.5 + 341.4) * (378.5 - 440.3) + (341.4 + 302.9) * (440.3 - 440.3) + (302.9 + 302.9) * (440.3 - 313.6) + (302.9 + 222) * (313.6 - 313.6) + (222 + 222) * (313.6 - 368.8) + (222 + 212) * (368.8 - 378.8) + (212 + 74.8) * (378.8 - 378.8) + (74.8 + 74.8) * (378.8 - 158) + (74.8 + 212) * (158 - 158) * 0.5 * 0.00694 + -((222 + 222) * (368.8 - 381) + (222 + 216.1) * (381 - 381) + (216.1 + 216.1) * (381 - 374.7) + (216.1 + 222) * (374.7 - 368.8)) * 0.5 * 0.00694$
LOW CEILING (Non-living area)	62	$-((415 + 415) * (384.4 - 656) + (415 + 381.9) * (656 - 656) + (381.9 + 381.9) * (656 - 388.5) + (381.9 + 391.9) * (388.5 - 384.4) + (391.9 + 415) * (384.4 - 384.4)) * 0.5 * 0.00694$
LOW CEILING (Non-living area)	25	$-((561.6 + 571.6) * (551.1 - 561.1) + (571.6 + 571.6) * (561.1 - 656) + (571.6 + 537) * (656 - 656) + (537 + 537) * (656 - 551.1) + (537 + 561.6) * (551.1 - 551.1)) * 0.5 * 0.00694$
LOW CEILING (Non-living area)	21	$-((561.6 + 571.6) * (384.4 - 388.5) + (571.6 + 571.6) * (388.5 - 466.3) + (571.6 + 561.6) * (466.3 - 476.3) + (561.6 + 537.4) * (476.3 - 476.3) + (537.4 + 537.4) * (476.3 - 384.4) + (537.4 + 561.6) * (384.4 - 384.4)) * 0.5 * 0.00694$
OPEN TO BELOW (Non-living area)	122	$-((302.9 + 302.9) * (313.6 - 440.3) + (302.9 + 351.5) * (440.3 - 440.3) + (351.5 + 351.4) * (440.3 - 488.8) + (351.4 + 212) * (488.8 - 488.8) + (212 + 212) * (488.8 - 378.8) + (212 + 222) * (378.8 - 368.8) + (222 + 222) * (368.8 - 368.8) + (222 + 222) * (368.8 - 313.6) + (222 + 302.9) * (313.6 - 313.6)) * 0.5 * 0.00694$
OPEN TO BELOW (Non-living area)	122	$-((222 + 216.1) * (368.8 - 374.7) + (216.1 + 216.1) * (374.7 - 381) + (216.1 + 222) * (381 - 381) + (222 + 222) * (381 - 368.8)) * 0.5 * 0.00694$
OPEN TO BELOW (Non-living area)	242	$-((398.8 + 398.8) * (62.3 - 158.4) + (398.8 + 394.6) * (158.4 - 162.5) + (394.6 + 394.6) * (162.5 - 158.4) + (394.6 + 388.7) * (158.4 - 158.4) + (388.7 + 388.7) * (158.4 - 259.7) + (388.7 + 222) * (259.7 - 259.7) + (222 + 222) * (259.7 - 158) + (222 + 216.1) * (158 - 158) + (216.1 + 216.1) * (158 - 162.1) + (216.1 + 212) * (162.1 - 158) + (212 + 212) * (158 - 62.3) + (212 + 398.8) * (62.3 - 62.3)) * 0.5 * 0.00694$