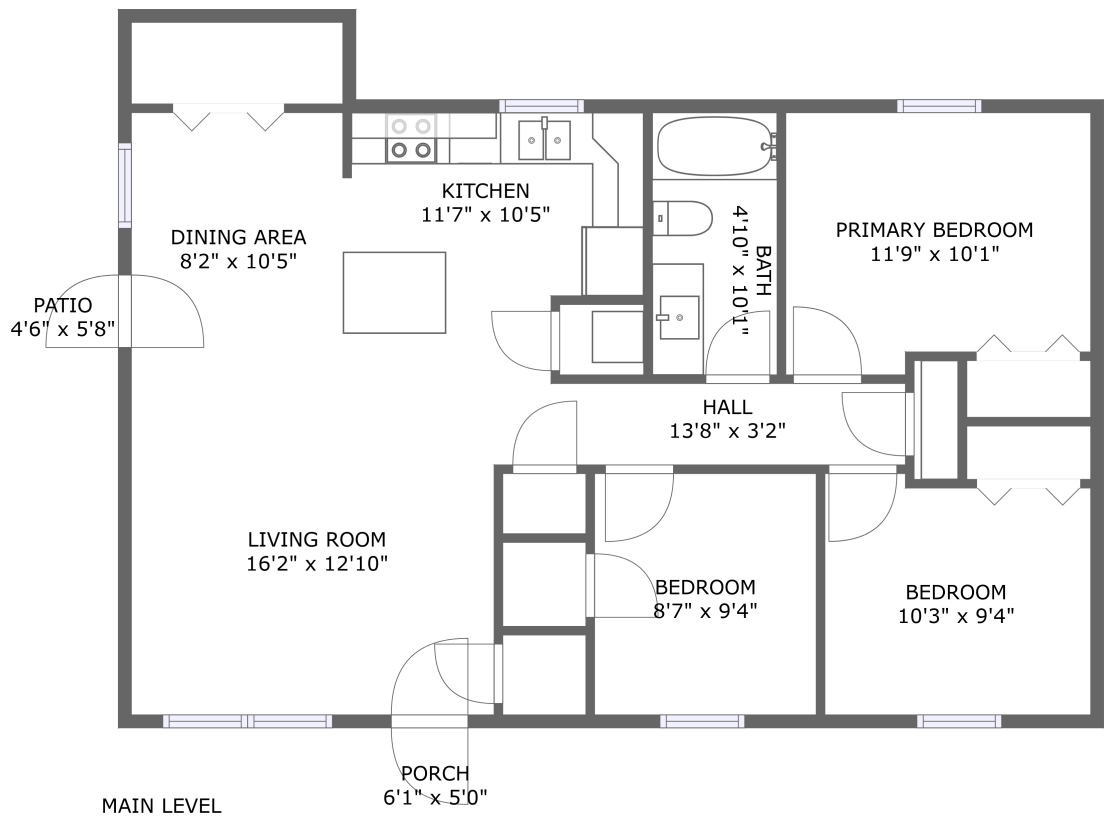


Home report

2132 Bainbridge Drive, Salem, Salem city, Virginia, United States, 24153



Total Area: 890 sq. ft

Floor 1: 890 sq. ft

Excluded: Patio 26 sq. ft, Porch 30 sq. ft, Walls: 64 sq. ft

Property summary

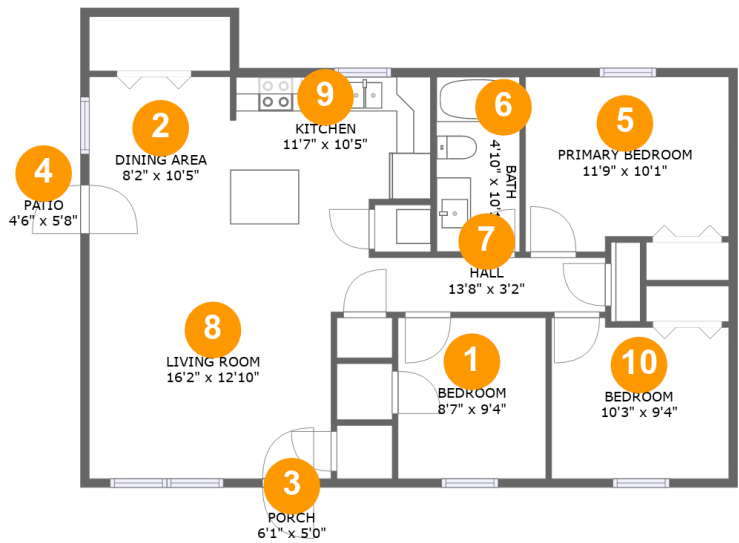
 1 Floors

 3 Bedrooms

 1 Bathrooms

Home report

2132 Bainbridge Drive, Salem, Salem city, Virginia, United States, 24153

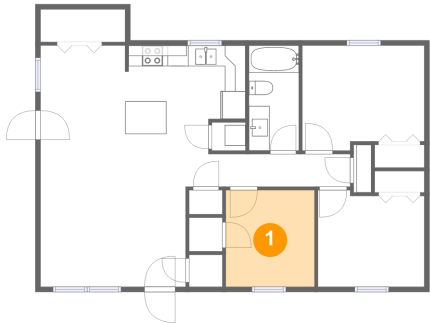


Room dimensions

Floor 1 Total:890sqft Excluded: 56sqft

| #  |                 | Max Dimensions | sqft       | Included |
|----|-----------------|----------------|------------|----------|
| 1  | Bedroom         | 8'7" x 9'4"    | 80 sq. ft  | Yes      |
| 2  | Dining Area     | 8'2" x 10'5"   | 85 sq. ft  | Yes      |
| 3  | Porch           | 6'1" x 5'0"    | 30 sq. ft  | No       |
| 4  | Patio           | 4'6" x 5'8"    | 26 sq. ft  | No       |
| 5  | Primary Bedroom | 11'9" x 10'1"  | 113 sq. ft | Yes      |
| 6  | Bath            | 4'10" x 10'1"  | 49 sq. ft  | Yes      |
| 7  | Hall            | 13'8" x 3'2"   | 43 sq. ft  | Yes      |
| 8  | Living Room     | 16'2" x 12'10" | 186 sq. ft | Yes      |
| 9  | Kitchen         | 11'7" x 10'5"  | 108 sq. ft | Yes      |
| 10 | Bedroom         | 10'3" x 9'4"   | 92 sq. ft  | Yes      |

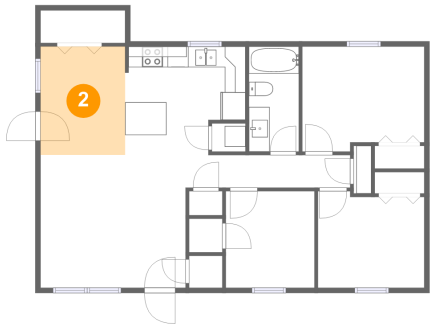
1 Floor 1 - Bedroom



Max Dimensions: 8'7" x 9'4"  
Calculated Area: 80 sq. ft  
Included: Yes

Heated: Yes  
Finished: Yes  
Enclosed: Yes  
Contiguous: Yes  
Permitted: Yes  
Wet space: No  
Addition: No  
Conversion: No

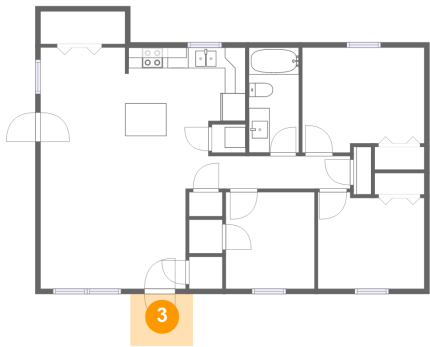
2 Floor 1 - Dining Area



Max Dimensions: 8'2" x 10'5"  
Calculated Area: 85 sq. ft  
Included: Yes

Heated: Yes  
Finished: Yes  
Enclosed: Yes  
Contiguous: Yes  
Permitted: Yes  
Wet space: No  
Addition: No  
Conversion: No

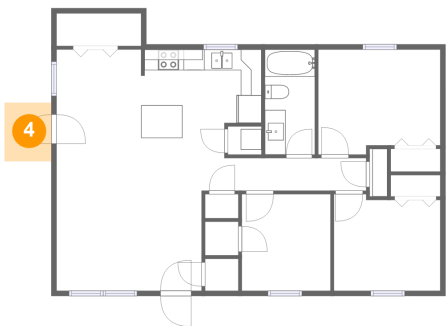
3 Floor 1 - Porch



Max Dimensions: 6'1" x 5'0"  
Calculated Area: 30 sq. ft  
Included: No

Heated: No  
Finished: Yes  
Enclosed: No  
Contiguous: Yes  
Permitted: Yes  
Wet space: No  
Addition: No  
Conversion: No

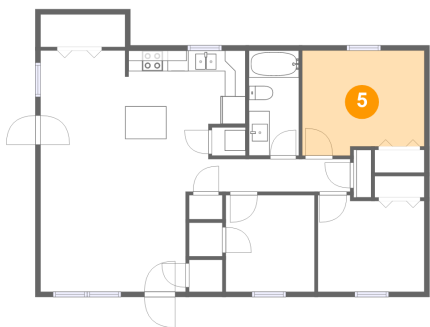
4 Floor 1 - Patio



Max Dimensions: 4'6" x 5'8"  
Calculated Area: 26 sq. ft  
Included: No

Heated: No  
Finished: Yes  
Enclosed: No  
Contiguous: Yes  
Permitted: Yes  
Wet space: No  
Addition: No  
Conversion: No

5 Floor 1 - Primary Bedroom

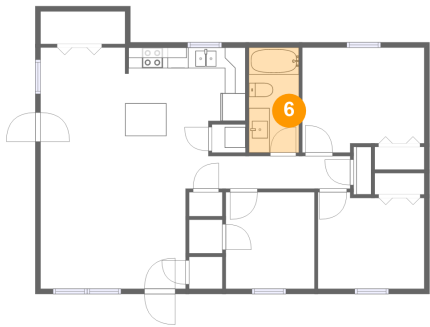


Max Dimensions: 11'9" x 10'1"  
Calculated Area: 113 sq. ft  
Included: Yes

Heated: Yes  
Finished: Yes  
Enclosed: Yes  
Contiguous: Yes  
Permitted: Yes  
Wet space: No  
Addition: No  
Conversion: No

2132 Bainbridge Drive, Salem, Salem city, Virginia, United States, 24153

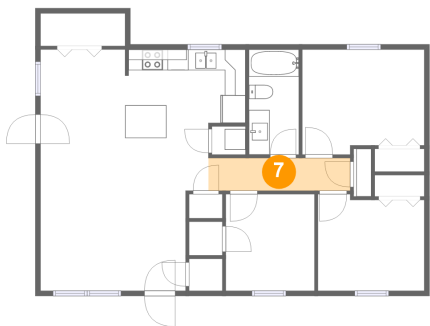
6 Floor 1 - Bath



Max Dimensions: 4'10" x 10'1"  
Calculated Area: 49 sq. ft  
Included: Yes

Heated: Yes  
Finished: Yes  
Enclosed: Yes  
Contiguous: Yes  
Permitted: Yes  
Wet space: Yes  
Addition: No  
Conversion: No

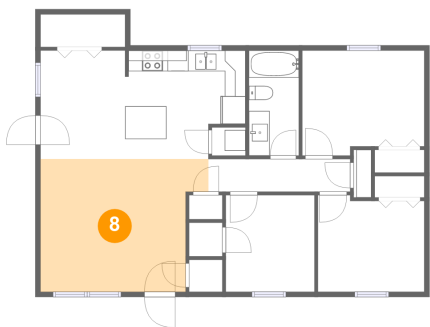
7 Floor 1 - Hall



Max Dimensions: 13'8" x 3'2"  
Calculated Area: 43 sq. ft  
Included: Yes

Heated: Yes  
Finished: Yes  
Enclosed: Yes  
Contiguous: Yes  
Permitted: Yes  
Wet space: No  
Addition: No  
Conversion: No

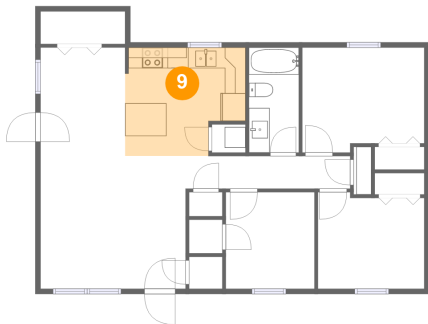
8 Floor 1 - Living Room



Max Dimensions: 16'2" x 12'10"  
Calculated Area: 186 sq. ft  
Included: Yes

Heated: Yes  
Finished: Yes  
Enclosed: Yes  
Contiguous: Yes  
Permitted: Yes  
Wet space: No  
Addition: No  
Conversion: No

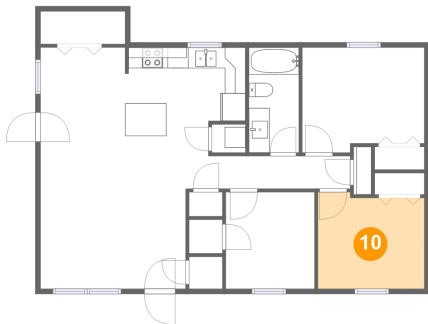
9 Floor 1 - Kitchen



Max Dimensions: 11'7" x 10'5"  
Calculated Area: 108 sq. ft  
Included: Yes

Heated: Yes  
Finished: Yes  
Enclosed: Yes  
Contiguous: Yes  
Permitted: Yes  
Wet space: No  
Addition: No  
Conversion: No

10 Floor 1 - Bedroom



Max Dimensions: 10'3" x 9'4"  
Calculated Area: 92 sq. ft  
Included: Yes

Heated: Yes  
Finished: Yes  
Enclosed: Yes  
Contiguous: Yes  
Permitted: Yes  
Wet space: No  
Addition: No  
Conversion: No