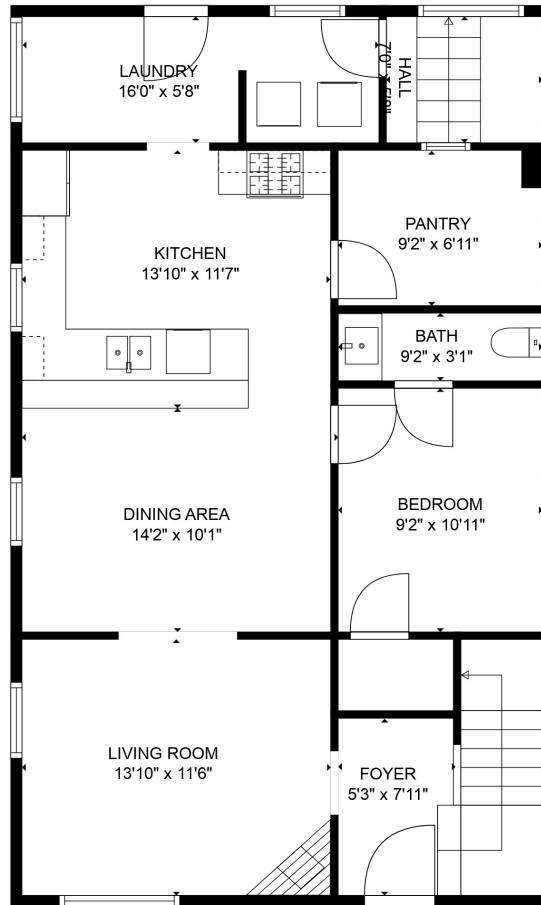
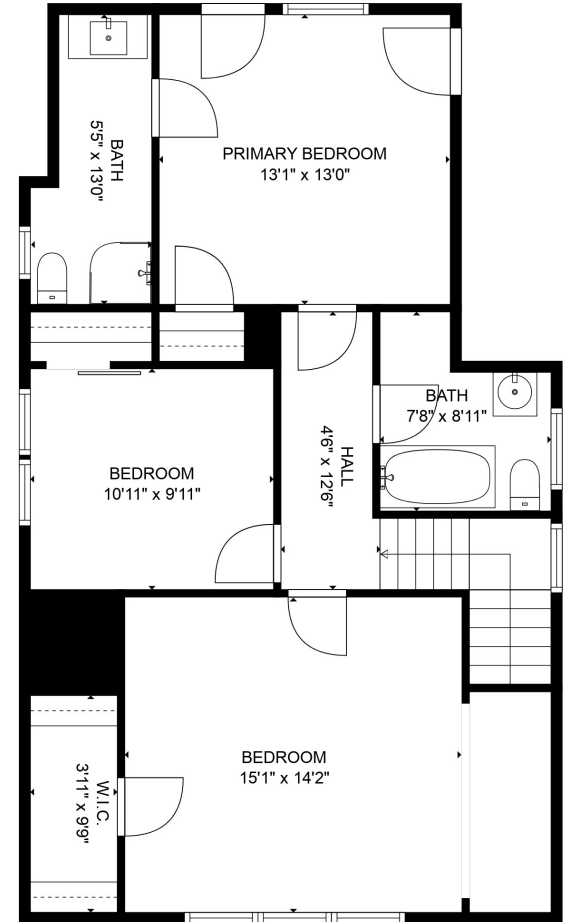


FLOOR 1



FLOOR 2

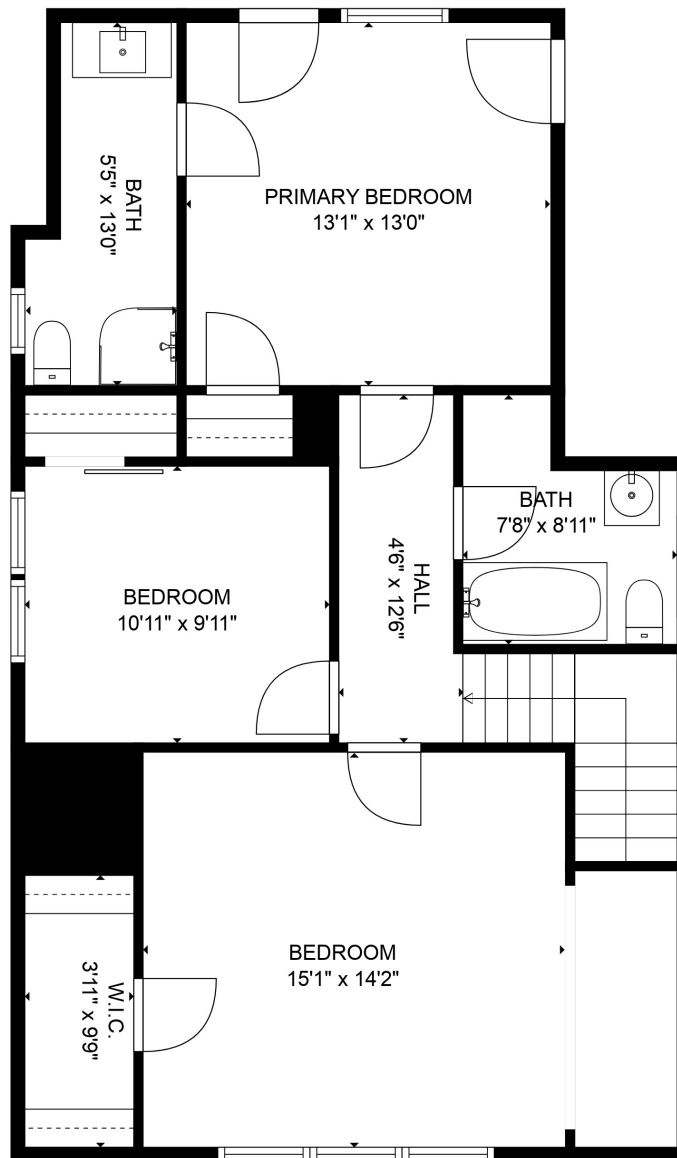


FLOOR 3

TOTAL: 1780 sq. ft

Below Ground: 16 sq. ft, FLOOR 2: 924 sq. ft, FLOOR 3: 840 sq. ft
 EXCLUDED AREAS: BASEMENT: 722 sq. ft, LOW CEILING: 21 sq. ft

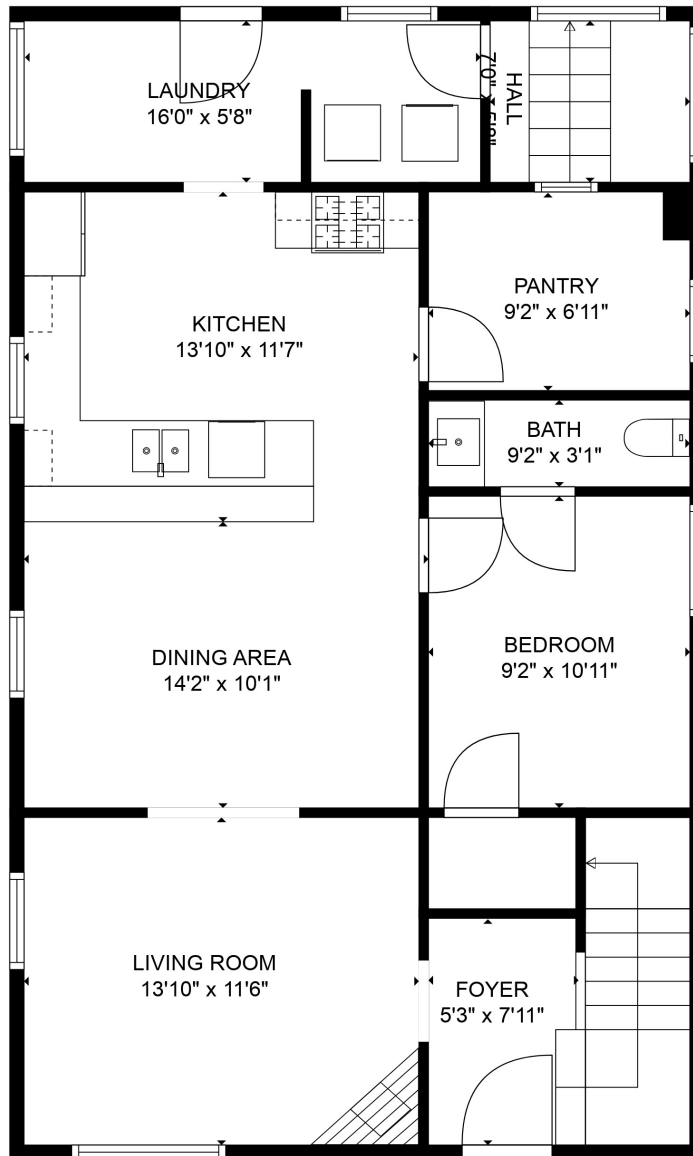
SIZES AND DIMENSIONS ARE APPROXIMATE, ACTUAL MAY VARY.



TOTAL: 1780 sq. ft

Below Ground: 16 sq. ft, FLOOR 2: 924 sq. ft, FLOOR 3: 840 sq. ft
 EXCLUDED AREAS: BASEMENT: 722 sq. ft, LOW CEILING: 21 sq. ft

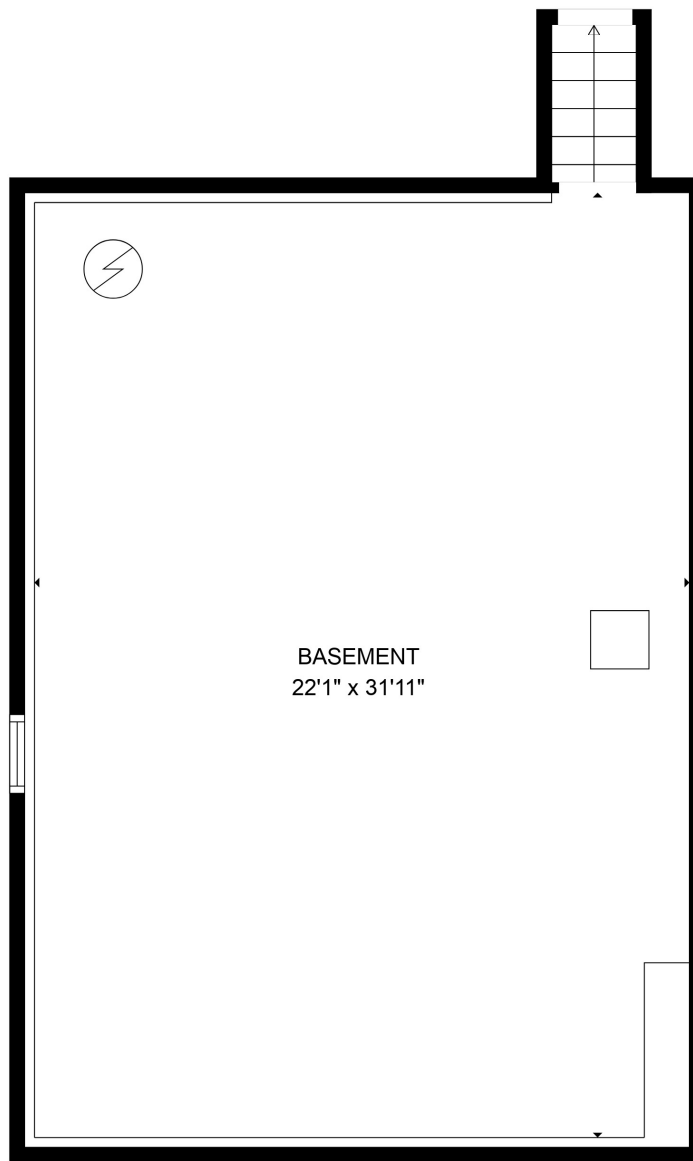
SIZES AND DIMENSIONS ARE APPROXIMATE, ACTUAL MAY VARY.



TOTAL: 1780 sq. ft

Below Ground: 16 sq. ft, FLOOR 2: 924 sq. ft, FLOOR 3: 840 sq. ft
EXCLUDED AREAS: BASEMENT: 722 sq. ft, LOW CEILING: 21 sq. ft

SIZES AND DIMENSIONS ARE APPROXIMATE, ACTUAL MAY VARY.



TOTAL: 1780 sq. ft

Below Ground: 16 sq. ft, FLOOR 2: 924 sq. ft, FLOOR 3: 840 sq. ft
EXCLUDED AREAS: BASEMENT: 722 sq. ft, LOW CEILING: 21 sq. ft

SIZES AND DIMENSIONS ARE APPROXIMATE, ACTUAL MAY VARY.