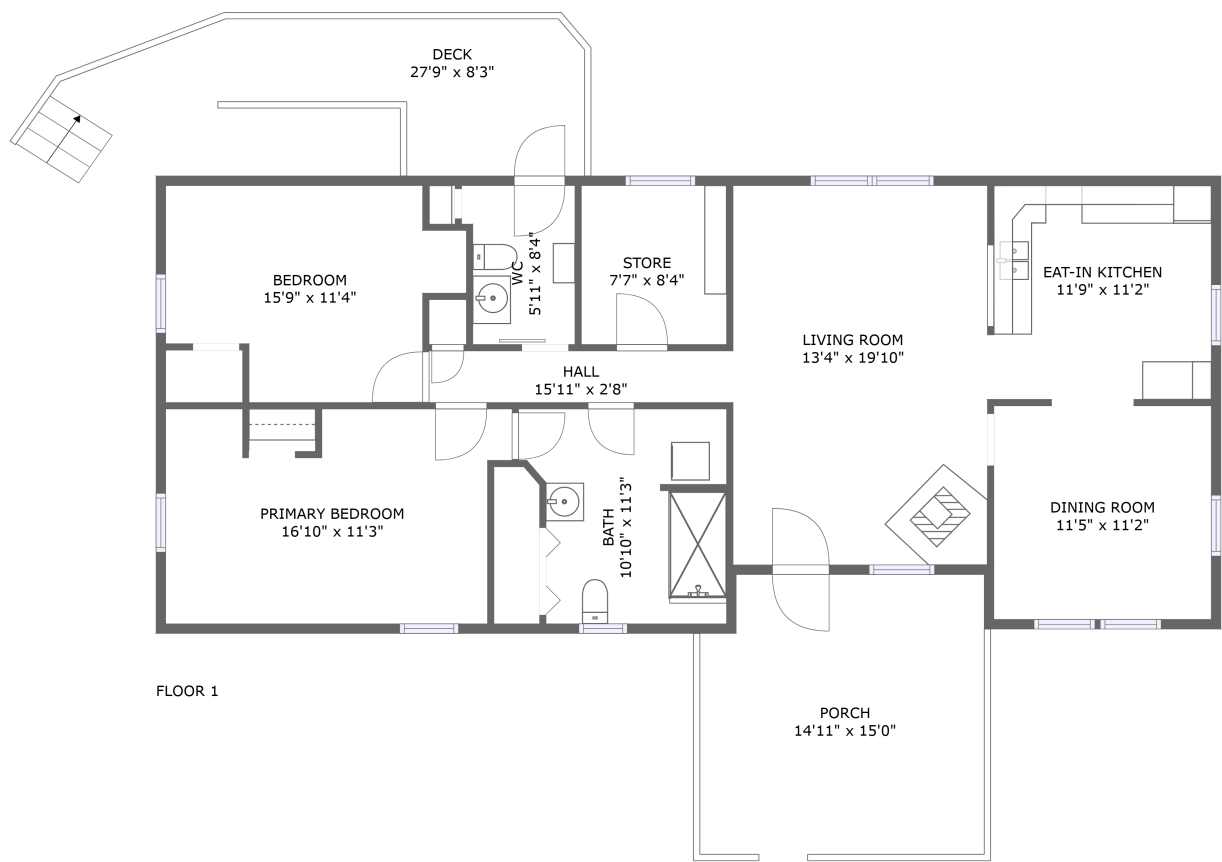


Home report

564 Shade Lane, Berkeley Springs, Morgan County, West Virginia, United States, 25411




Total Area: 1210 sq. ft

Floor 1: 1210 sq. ft

Excluded: Porch 213 sq. ft, Deck 160 sq. ft, Walls: 81 sq. ft

Property summary

 1 Floors

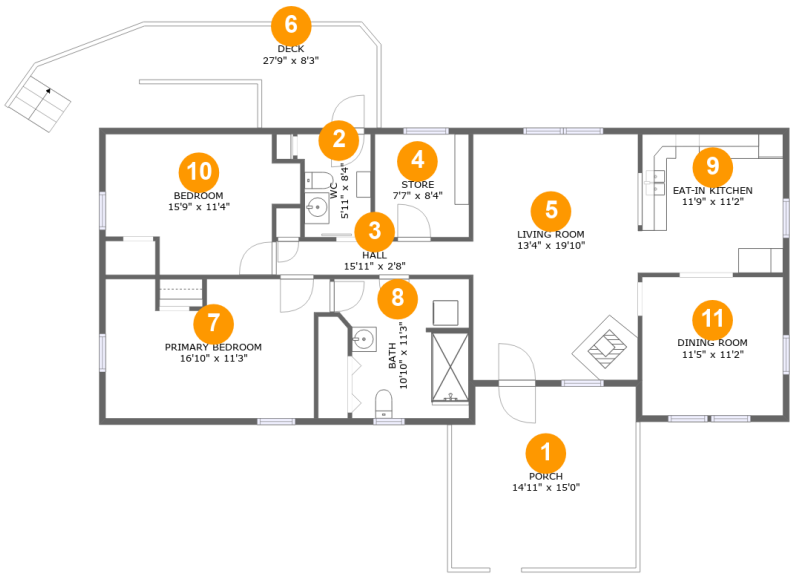
 2 Bedrooms

 1 Bathrooms

 1 Half baths

Home report

564 Shade Lane, Berkeley Springs, Morgan County, West Virginia, United States, 25411



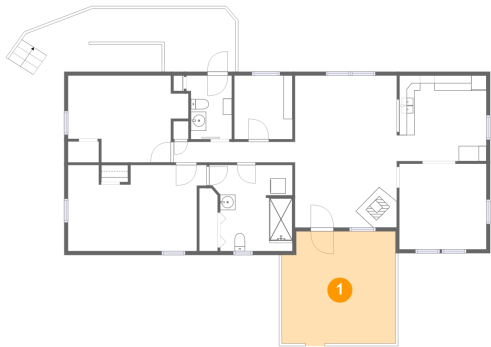
Room dimensions

Floor 1 Total:1210sqft Excluded: 373sqft

#		Max Dimensions	sqft	Included
1	Porch	14'11" x 15'0"	213 sq. ft	No
2	WC	5'11" x 8'4"	46 sq. ft	Yes
3	Hall	15'11" x 2'8"	43 sq. ft	Yes
4	Store	7'7" x 8'4"	63 sq. ft	Yes
5	Living Room	13'4" x 19'10"	264 sq. ft	Yes
6	Deck	27'9" x 8'3"	160 sq. ft	No
7	Primary Bedroom	16'10" x 11'3"	182 sq. ft	Yes
8	Bath	10'10" x 11'3"	110 sq. ft	Yes
9	Eat-in Kitchen	11'9" x 11'2"	130 sq. ft	Yes
10	Bedroom	15'9" x 11'4"	147 sq. ft	Yes
11	Dining Room	11'5" x 11'2"	127 sq. ft	Yes

564 Shade Lane, Berkeley Springs, Morgan County, West Virginia, United States, 25411

1 Floor 1 - Porch



Max Dimensions: 14'11" x 15'0"
Calculated Area: 213 sq. ft
Included: No

Heated: No
Finished: Yes
Enclosed: No
Contiguous: Yes
Permitted: Yes
Wet space: No
Addition: No
Conversion: No

2 Floor 1 - WC

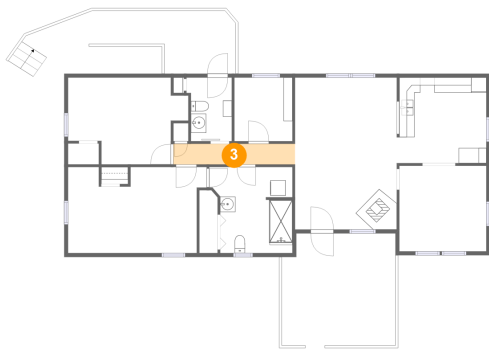


Max Dimensions: 5'11" x 8'4"
Calculated Area: 46 sq. ft
Included: Yes

Heated: Yes
Finished: Yes
Enclosed: Yes
Contiguous: Yes
Permitted: Yes
Wet space: Yes
Addition: No
Conversion: No

564 Shade Lane, Berkeley Springs, Morgan County, West Virginia, United States, 25411

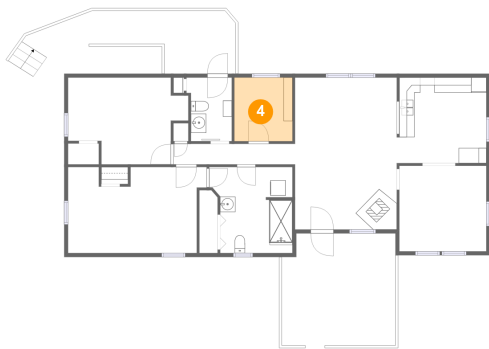
3 Floor 1 - Hall



Max Dimensions: 15'11" x 2'8"
Calculated Area: 43 sq. ft
Included: Yes

Heated: Yes
Finished: Yes
Enclosed: Yes
Contiguous: Yes
Permitted: Yes
Wet space: No
Addition: No
Conversion: No

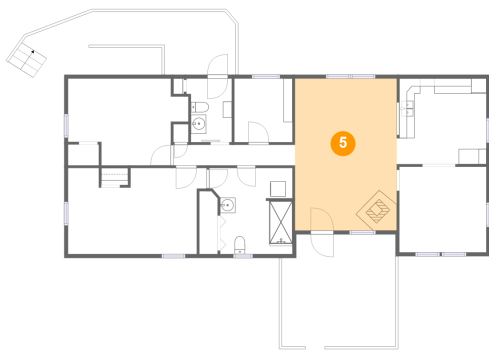
4 Floor 1 - Store



Max Dimensions: 7'7" x 8'4"
Calculated Area: 63 sq. ft
Included: Yes

Heated: Yes
Finished: Yes
Enclosed: Yes
Contiguous: Yes
Permitted: Yes
Wet space: No
Addition: No
Conversion: No

5 Floor 1 - Living Room

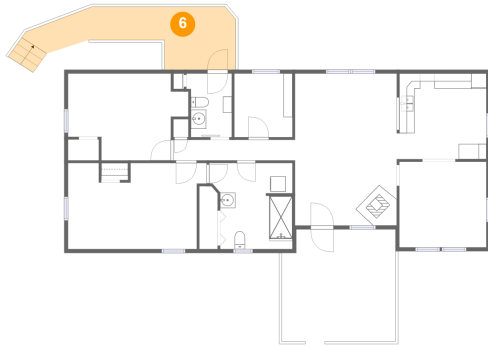


Max Dimensions: 13'4" x 19'10"
Calculated Area: 264 sq. ft
Included: Yes

Heated: Yes
Finished: Yes
Enclosed: Yes
Contiguous: Yes
Permitted: Yes
Wet space: No
Addition: No
Conversion: No

564 Shade Lane, Berkeley Springs, Morgan County, West Virginia, United States, 25411

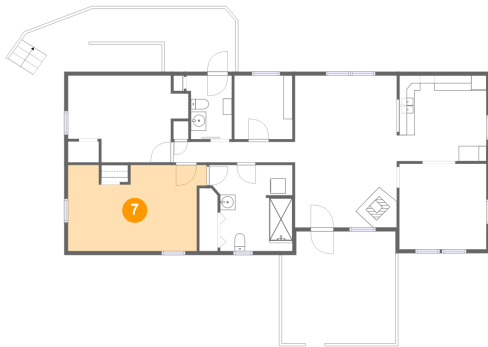
6 Floor 1 - Deck



Max Dimensions: 27'9" x 8'3"
Calculated Area: 160 sq. ft
Included: No

Heated: No
Finished: Yes
Enclosed: No
Contiguous: Yes
Permitted: Yes
Wet space: No
Addition: No
Conversion: No

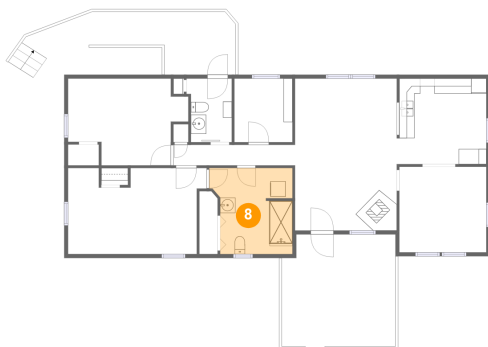
7 Floor 1 - Primary Bedroom



Max Dimensions: 16'10" x 11'3"
Calculated Area: 182 sq. ft
Included: Yes

Heated: Yes
Finished: Yes
Enclosed: Yes
Contiguous: Yes
Permitted: Yes
Wet space: No
Addition: No
Conversion: No

8 Floor 1 - Bath



Max Dimensions: 10'10" x 11'3"
Calculated Area: 110 sq. ft
Included: Yes

Heated: Yes
Finished: Yes
Enclosed: Yes
Contiguous: Yes
Permitted: Yes
Wet space: Yes
Addition: No
Conversion: No

564 Shade Lane, Berkeley Springs, Morgan County, West Virginia, United States, 25411

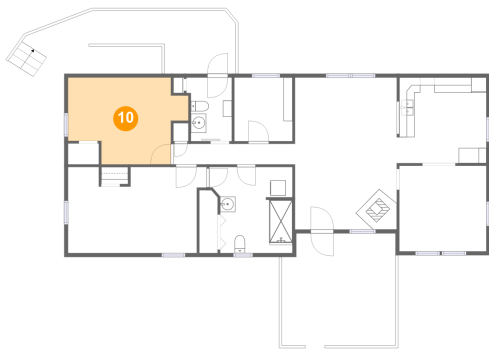
9 Floor 1 - Eat-in Kitchen



Max Dimensions: 11'9" x 11'2"
Calculated Area: 130 sq. ft
Included: Yes

Heated: Yes
Finished: Yes
Enclosed: Yes
Contiguous: Yes
Permitted: Yes
Wet space: No
Addition: No
Conversion: No

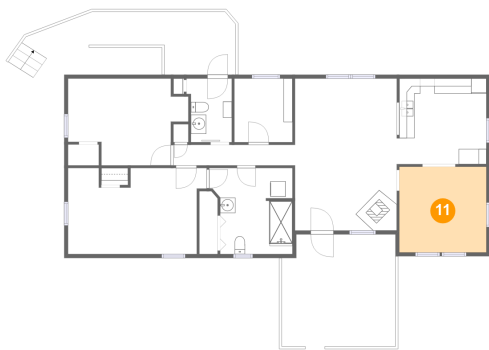
10 Floor 1 - Bedroom



Max Dimensions: 15'9" x 11'4"
Calculated Area: 147 sq. ft
Included: Yes

Heated: Yes
Finished: Yes
Enclosed: Yes
Contiguous: Yes
Permitted: Yes
Wet space: No
Addition: No
Conversion: No

11 Floor 1 - Dining Room



Max Dimensions: 11'5" x 11'2"
Calculated Area: 127 sq. ft
Included: Yes

Heated: Yes
Finished: Yes
Enclosed: Yes
Contiguous: Yes
Permitted: Yes
Wet space: No
Addition: No
Conversion: No