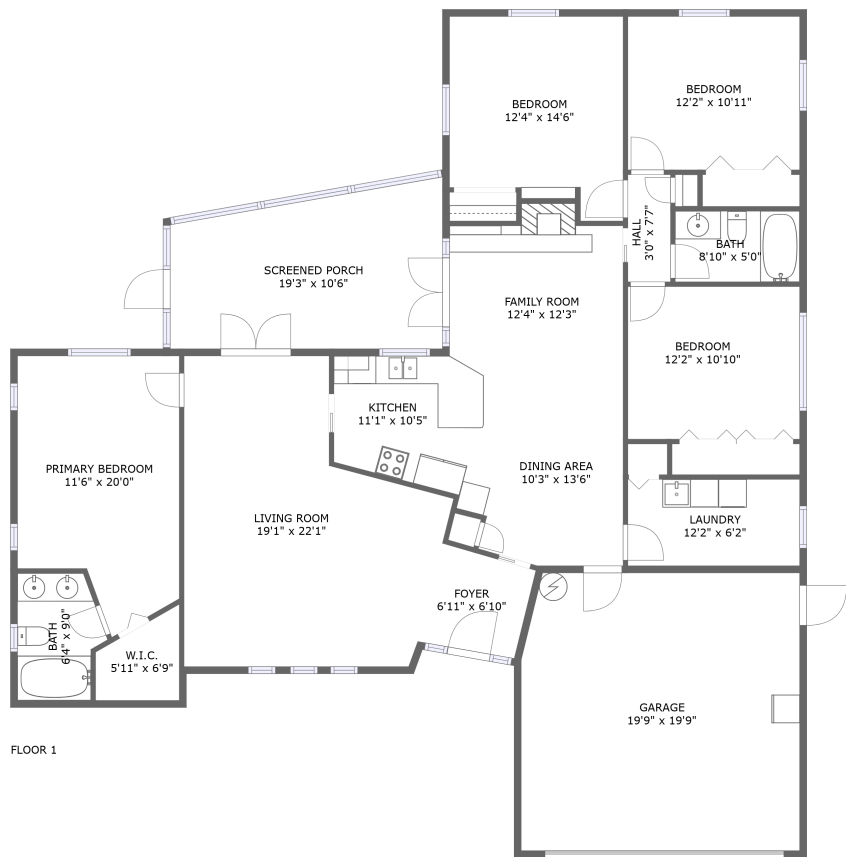




Home report


1142 Lancer Lane, Westwinds Village, Tarpon Springs, Pinellas County, Florida, United States, 34689




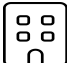
Property summary


 **1** Garages


 **4** Bedrooms

 **2** Bathrooms

 **0** Half baths

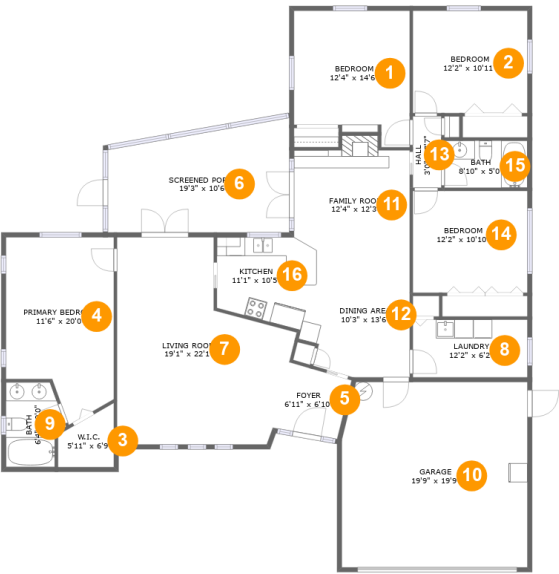
 **1** Floors

 **1,805** Gross living area sqft

 **2,433** Total sqft

Home report

1142 Lancer Lane, Westwinds Village, Tarpon Springs, Pinellas County, Florida, United States, 34689



Room dimensions

Floor 1

Total sqft: 2433 Living area: 1805

#		Dimensions	sqft	Counted as living area
1	Bedroom	12'4" x 14'6"	160 sq. ft	Yes
2	Bedroom	12'2" x 10'11"	133 sq. ft	Yes
3	W.I.C.	5'11" x 6'9"	30 sq. ft	Yes
4	Primary Bedroom	11'6" x 20'0"	194 sq. ft	Yes
5	Foyer	6'11" x 6'10"	47 sq. ft	Yes
6	Screened Porch	19'3" x 10'6"	203 sq. ft	No
7	Living Room	19'1" x 22'1"	325 sq. ft	Yes
8	Laundry	12'2" x 6'2"	75 sq. ft	Yes
9	Bath	6'4" x 9'0"	49 sq. ft	Yes
10	Garage	19'9" x 19'9"	385 sq. ft	No
11	Family Room	12'4" x 12'3"	136 sq. ft	Yes

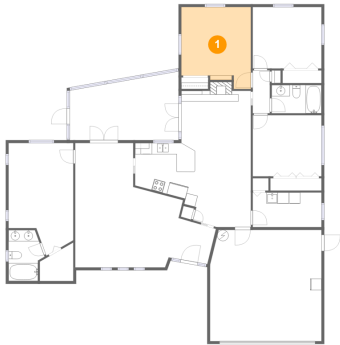
Home report

1142 Lancer Lane, Westwinds Village, Tarpon Springs, Pinellas County, Florida, United States, 34689

#		Dimensions	sqft	Counted as living area
12	Dining Area	10'3" x 13'6"	128 sq. ft	Yes
13	Hall	3'0" x 7'7"	23 sq. ft	Yes
14	Bedroom	12'2" x 10'10"	132 sq. ft	Yes
15	Bath	8'10" x 5'0"	44 sq. ft	Yes
16	Kitchen	11'1" x 10'5"	99 sq. ft	Yes

1142 Lancer Lane, Westwinds Village, Tarpon Springs, Pinellas
County, Florida, United States, 34689

1 Floor 1 - Bedroom



Dimensions: 12'4" x 14'6"
Area: 160 sq. ft
Counted as living area: Yes

Heated: Yes
Finished: Yes
Enclosed: Yes
Contiguous: Yes
Permitted: Yes
Wet space: No
Addition: No
Conversion: No

2 Floor 1 - Bedroom



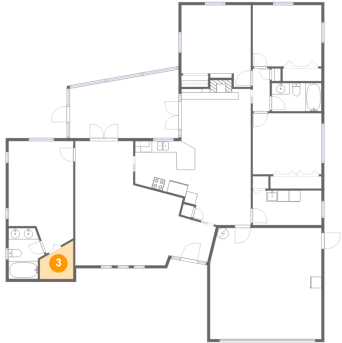
Dimensions: 12'2" x 10'11"
Area: 133 sq. ft
Counted as living area: Yes

Heated: Yes
Finished: Yes
Enclosed: Yes
Contiguous: Yes
Permitted: Yes
Wet space: No
Addition: No
Conversion: No

Home report

1142 Lancer Lane, Westwinds Village, Tarpon Springs, Pinellas County, Florida, United States, 34689

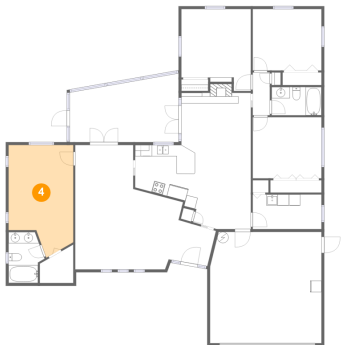
3 Floor 1 - W.I.C.



Dimensions: 5'11" x 6'9"
Area: 30 sq. ft
Counted as living area: Yes

Heated: Yes
Finished: Yes
Enclosed: Yes
Contiguous: Yes
Permitted: Yes
Wet space: No
Addition: No
Conversion: No

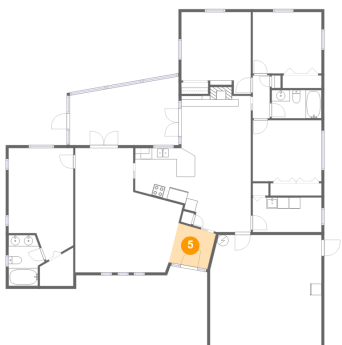
4 Floor 1 - Primary Bedroom



Dimensions: 11'6" x 20'0"
Area: 194 sq. ft
Counted as living area: Yes

Heated: Yes
Finished: Yes
Enclosed: Yes
Contiguous: Yes
Permitted: Yes
Wet space: No
Addition: No
Conversion: No

5 Floor 1 - Foyer

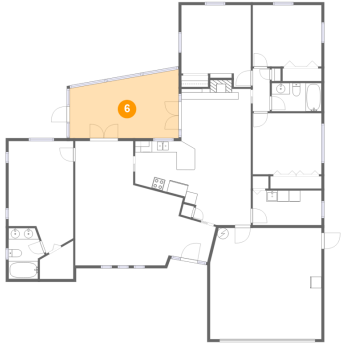


Dimensions: 6'11" x 6'10"
Area: 47 sq. ft
Counted as living area: Yes

Heated: Yes
Finished: Yes
Enclosed: Yes
Contiguous: Yes
Permitted: Yes
Wet space: No
Addition: No
Conversion: No

1142 Lancer Lane, Westwinds Village, Tarpon Springs, Pinellas County, Florida, United States, 34689

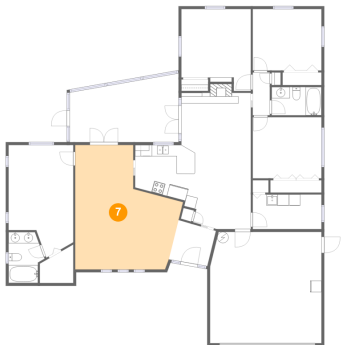
6 Floor 1 - Screened Porch



Dimensions: 19'3" x 10'6"
Area: 203 sq. ft
Counted as living area: No

Heated: No
Finished: Yes
Enclosed: No
Contiguous: Yes
Permitted: Yes
Wet space: No
Addition: No
Conversion: No

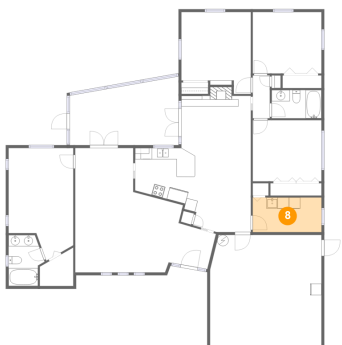
7 Floor 1 - Living Room



Dimensions: 19'1" x 22'1"
Area: 325 sq. ft
Counted as living area: Yes

Heated: Yes
Finished: Yes
Enclosed: Yes
Contiguous: Yes
Permitted: Yes
Wet space: No
Addition: No
Conversion: No

8 Floor 1 - Laundry

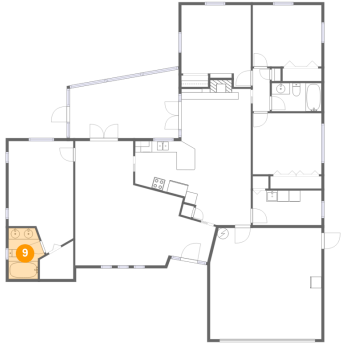


Dimensions: 12'2" x 6'2"
Area: 75 sq. ft
Counted as living area: Yes

Heated: Yes
Finished: Yes
Enclosed: Yes
Contiguous: Yes
Permitted: Yes
Wet space: No
Addition: No
Conversion: No

1142 Lancer Lane, Westwinds Village, Tarpon Springs, Pinellas County, Florida, United States, 34689

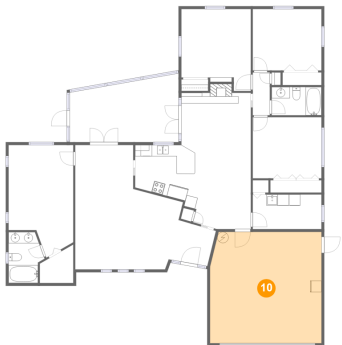
9 Floor 1 - Bath



Dimensions: 6'4" x 9'0"
Area: 49 sq. ft
Counted as living area: Yes

Heated: Yes
Finished: Yes
Enclosed: Yes
Contiguous: Yes
Permitted: Yes
Wet space: Yes
Addition: No
Conversion: No

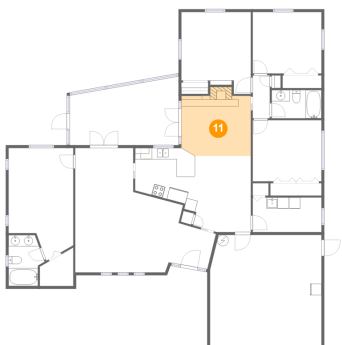
10 Floor 1 - Garage



Dimensions: 19'9" x 19'9"
Area: 385 sq. ft
Counted as living area: No

Heated: No
Finished: No
Enclosed: Yes
Contiguous: Yes
Permitted: Yes
Wet space: No
Addition: No
Conversion: No

11 Floor 1 - Family Room

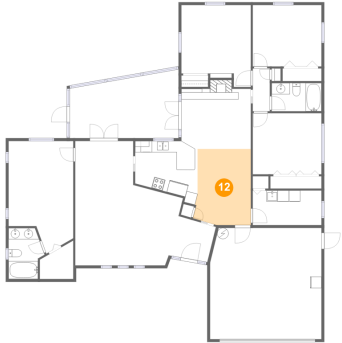


Dimensions: 12'4" x 12'3"
Area: 136 sq. ft
Counted as living area: Yes

Heated: Yes
Finished: Yes
Enclosed: Yes
Contiguous: Yes
Permitted: Yes
Wet space: No
Addition: No
Conversion: No

1142 Lancer Lane, Westwinds Village, Tarpon Springs, Pinellas County, Florida, United States, 34689

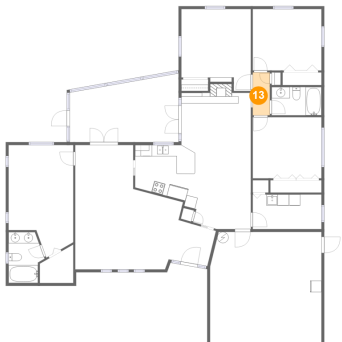
12 Floor 1 - Dining Area



Dimensions: 10'3" x 13'6"
Area: 128 sq. ft
Counted as living area: Yes

Heated: Yes
Finished: Yes
Enclosed: Yes
Contiguous: Yes
Permitted: Yes
Wet space: No
Addition: No
Conversion: No

13 Floor 1 - Hall



Dimensions: 3'0" x 7'7"
Area: 23 sq. ft
Counted as living area: Yes

Heated: Yes
Finished: Yes
Enclosed: Yes
Contiguous: Yes
Permitted: Yes
Wet space: No
Addition: No
Conversion: No

14 Floor 1 - Bedroom



Dimensions: 12'2" x 10'10"
Area: 132 sq. ft
Counted as living area: Yes

Heated: Yes
Finished: Yes
Enclosed: Yes
Contiguous: Yes
Permitted: Yes
Wet space: No
Addition: No
Conversion: No

Home report

1142 Lancer Lane, Westwinds Village, Tarpon Springs, Pinellas County, Florida, United States, 34689

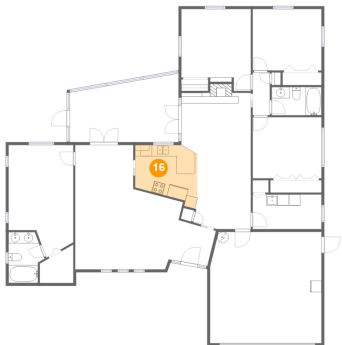
15 Floor 1 - Bath



Dimensions: 8'10" x 5'0"
Area: 44 sq. ft
Counted as living area: Yes

Heated: Yes
Finished: Yes
Enclosed: Yes
Contiguous: Yes
Permitted: Yes
Wet space: Yes
Addition: No
Conversion: No

16 Floor 1 - Kitchen



Dimensions: 11'1" x 10'5"
Area: 99 sq. ft
Counted as living area: Yes

Heated: Yes
Finished: Yes
Enclosed: Yes
Contiguous: Yes
Permitted: Yes
Wet space: No
Addition: No
Conversion: No