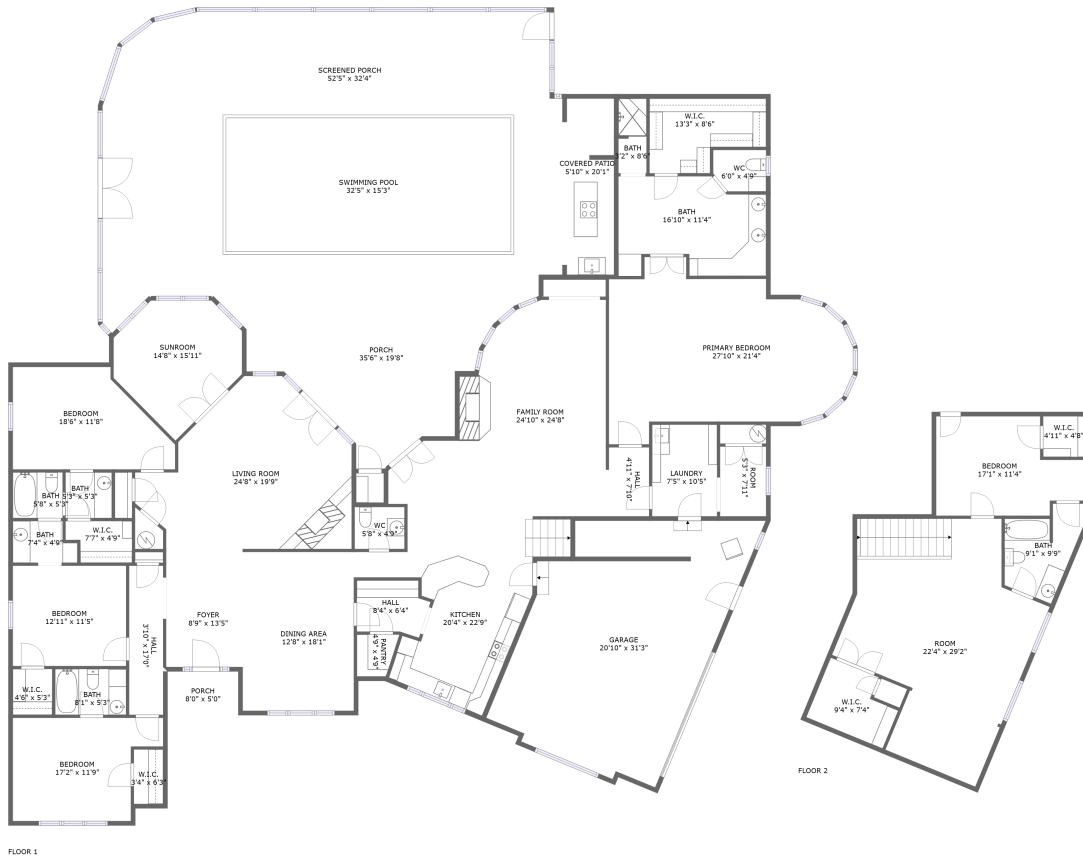



1605 Columbine Drive, Lufkin, Angelina County, Texas, United States, 75904



Property summary


 **1** Garages

 **5** Bedrooms

 **4** Bathrooms

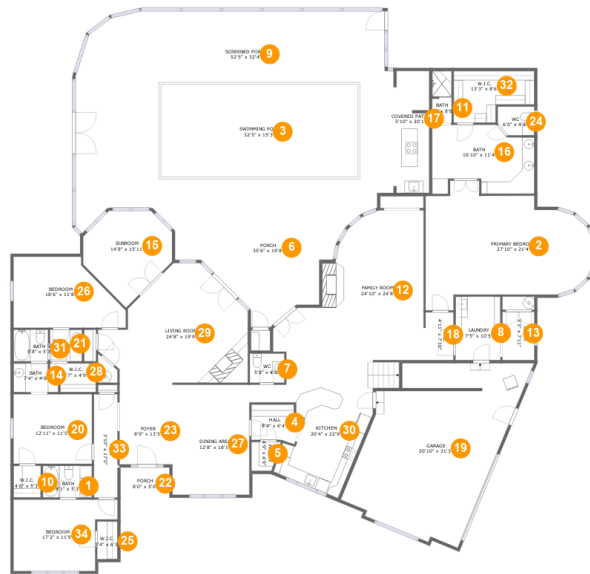
 **1** Half baths

 **2** Floors

 **4,631** Gross living area sqft

 **7,026** Total sqft

1605 Columbine Drive, Lufkin, Angelina County, Texas, United States, 75904



Room dimensions

Floor 1

Total sqft: 6147 Living area: 3752

#		Dimensions	sqft	Counted as living area
1	Bath	8'1" x 5'3"	42 sq. ft	Yes
2	Primary Bedroom	27'10" x 21'4"	433 sq. ft	Yes
3	Swimming Pool	32'5" x 15'3"	495 sq. ft	No
4	Hall	8'4" x 6'4"	45 sq. ft	Yes
5	Pantry	4'9" x 4'9"	20 sq. ft	Yes
6	Porch	35'6" x 19'8"	387 sq. ft	No
7	WC	5'8" x 4'9"	27 sq. ft	Yes
8	Laundry	7'5" x 10'5"	77 sq. ft	Yes
9	Screened Porch	52'5" x 32'4"	1658 sq. ft	No
10	W.I.C.	4'6" x 5'3"	23 sq. ft	Yes
11	Bath	3'2" x 8'6"	27 sq. ft	Yes

Scan captured on Mon, 26 Aug 2024 02:21:34 GMT

Information is calculated by Cubicasa technology deemed highly reliable but not guaranteed.

1605 Columbine Drive, Lufkin, Angelina County, Texas, United States, 75904

#		Dimensions	sqft	Counted as living area
12	Family Room	24'10" x 24'8"	436 sq. ft	Yes
13	Room	5'3" x 7'11"	42 sq. ft	Yes
14	Bath	7'4" x 4'9"	31 sq. ft	Yes
15	Sunroom	14'8" x 15'11"	165 sq. ft	Yes
16	Bath	16'10" x 11'4"	167 sq. ft	Yes
17	Covered Patio	5'10" x 20'1"	115 sq. ft	No
18	Hall	4'11" x 7'10"	38 sq. ft	Yes
19	Garage	20'10" x 31'3"	595 sq. ft	No
20	Bedroom	12'11" x 11'5"	148 sq. ft	Yes
21	Bath	5'3" x 5'3"	28 sq. ft	Yes
22	Porch	8'0" x 5'0"	40 sq. ft	No
23	Foyer	8'9" x 13'5"	117 sq. ft	Yes
24	WC	6'0" x 4'9"	27 sq. ft	Yes
25	W.I.C.	3'4" x 6'3"	21 sq. ft	Yes
26	Bedroom	18'6" x 11'8"	178 sq. ft	Yes
27	Dining Area	12'8" x 18'1"	229 sq. ft	Yes
28	W.I.C.	7'7" x 4'9"	32 sq. ft	Yes
29	Living Room	24'8" x 19'9"	359 sq. ft	Yes
30	Kitchen	20'4" x 22'9"	298 sq. ft	Yes
31	Bath	5'8" x 5'3"	30 sq. ft	Yes
32	W.I.C.	13'3" x 8'6"	94 sq. ft	Yes

**1605 Columbine Drive, Lufkin, Angelina County,
Texas, United States, 75904**

#		Dimensions	sqft	Counted as living area
33	Hall	3'10" x 17'0"	66 sq. ft	Yes
34	Bedroom	17'2" x 11'9"	170 sq. ft	Yes

1605 Columbine Drive, Lufkin, Angelina County,
Texas, United States, 75904



Room dimensions

Floor 2

Total sqft: 879 Living area: 879

#		Dimensions	sqft	Counted as living area
35	Bath	9'1" x 9'9"	71 sq. ft	Yes
36	Room	22'4" x 29'2"	470 sq. ft	Yes
37	W.I.C.	9'4" x 7'4"	60 sq. ft	Yes
38	Bedroom	17'1" x 11'4"	161 sq. ft	Yes
39	W.I.C.	4'11" x 4'8"	23 sq. ft	Yes

**1605 Columbine Drive, Lufkin, Angelina County,
Texas, United States, 75904**

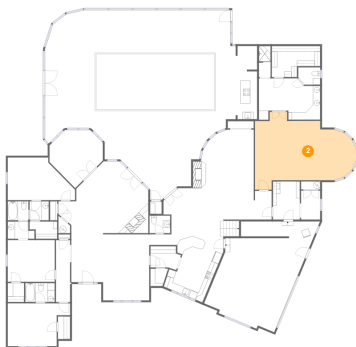
1 Floor 1 - Bath



Dimensions: 8'1" x 5'3"
Area: 42 sq. ft
Counted as living area: Yes

Heated: Yes
Finished: Yes
Enclosed: Yes
Contiguous: Yes
Permitted: Yes
Wet space: Yes
Addition: No
Conversion: No

2 Floor 1 - Primary Bedroom

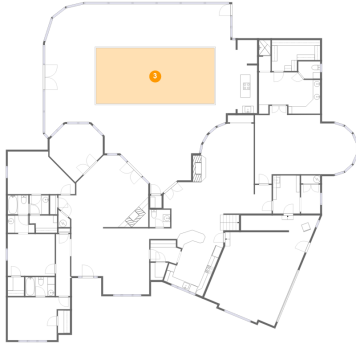


Dimensions: 27'10" x 21'4"
Area: 433 sq. ft
Counted as living area: Yes

Heated: Yes
Finished: Yes
Enclosed: Yes
Contiguous: Yes
Permitted: Yes
Wet space: No
Addition: No
Conversion: No

1605 Columbine Drive, Lufkin, Angelina County, Texas, United States, 75904

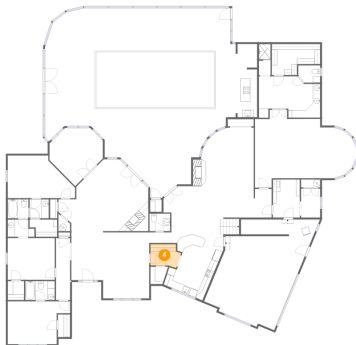
3 Floor 1 - Swimming Pool



Dimensions: 32'5" x 15'3"
Area: 495 sq. ft
Counted as living area: No

Heated: No
Finished: No
Enclosed: No
Contiguous: Yes
Permitted: No
Wet space: No
Addition: No
Conversion: No

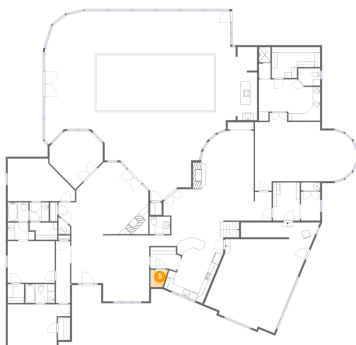
4 Floor 1 - Hall



Dimensions: 8'4" x 6'4"
Area: 45 sq. ft
Counted as living area: Yes

Heated: Yes
Finished: Yes
Enclosed: Yes
Contiguous: Yes
Permitted: Yes
Wet space: No
Addition: No
Conversion: No

5 Floor 1 - Pantry

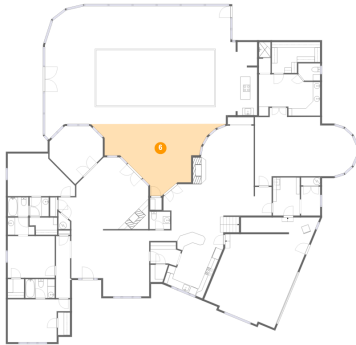


Dimensions: 4'9" x 4'9"
Area: 20 sq. ft
Counted as living area: Yes

Heated: Yes
Finished: Yes
Enclosed: Yes
Contiguous: Yes
Permitted: Yes
Wet space: No
Addition: No
Conversion: No

**1605 Columbine Drive, Lufkin, Angelina County,
Texas, United States, 75904**

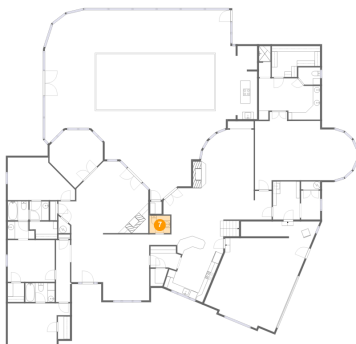
6 Floor 1 - Porch



Dimensions: 35'6" x 19'8"
Area: 387 sq. ft
Counted as living area: No

Heated: No
Finished: Yes
Enclosed: No
Contiguous: Yes
Permitted: Yes
Wet space: No
Addition: No
Conversion: No

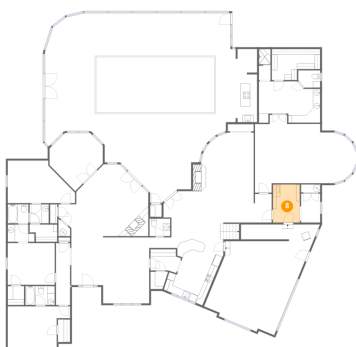
7 Floor 1 - WC



Dimensions: 5'8" x 4'9"
Area: 27 sq. ft
Counted as living area: Yes

Heated: Yes
Finished: Yes
Enclosed: Yes
Contiguous: Yes
Permitted: Yes
Wet space: Yes
Addition: No
Conversion: No

8 Floor 1 - Laundry



Dimensions: 7'5" x 10'5"
Area: 77 sq. ft
Counted as living area: Yes

Heated: Yes
Finished: Yes
Enclosed: Yes
Contiguous: Yes
Permitted: Yes
Wet space: No
Addition: No
Conversion: No

1605 Columbine Drive, Lufkin, Angelina County, Texas, United States, 75904

9 Floor 1 - Screened Porch



Dimensions: 52'5" x 32'4"
Area: 1658 sq. ft
Counted as living area: No

Heated: No
Finished: Yes
Enclosed: No
Contiguous: Yes
Permitted: Yes
Wet space: No
Addition: No
Conversion: No

10 Floor 1 - W.I.C.



Dimensions: 4'6" x 5'3"
Area: 23 sq. ft
Counted as living area: Yes

Heated: Yes
Finished: Yes
Enclosed: Yes
Contiguous: Yes
Permitted: Yes
Wet space: No
Addition: No
Conversion: No

11 Floor 1 - Bath

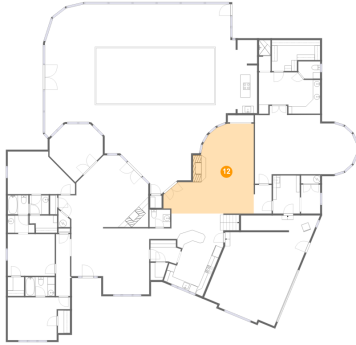


Dimensions: 3'2" x 8'6"
Area: 27 sq. ft
Counted as living area: Yes

Heated: Yes
Finished: Yes
Enclosed: Yes
Contiguous: Yes
Permitted: Yes
Wet space: Yes
Addition: No
Conversion: No

1605 Columbine Drive, Lufkin, Angelina County, Texas, United States, 75904

12 Floor 1 - Family Room



Dimensions: 24'10" x 24'8"
Area: 436 sq. ft
Counted as living area: Yes

Heated: Yes
Finished: Yes
Enclosed: Yes
Contiguous: Yes
Permitted: Yes
Wet space: No
Addition: No
Conversion: No

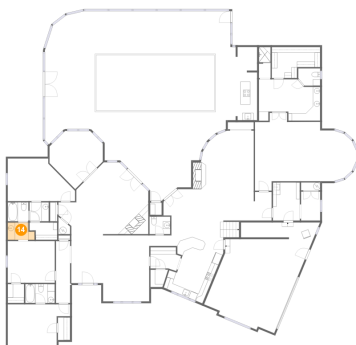
13 Floor 1 - Room



Dimensions: 5'3" x 7'11"
Area: 42 sq. ft
Counted as living area: Yes

Heated: Yes
Finished: Yes
Enclosed: Yes
Contiguous: Yes
Permitted: Yes
Wet space: No
Addition: No
Conversion: No

14 Floor 1 - Bath

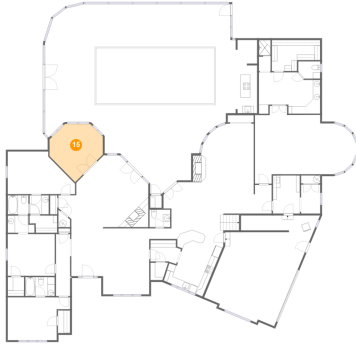


Dimensions: 7'4" x 4'9"
Area: 31 sq. ft
Counted as living area: Yes

Heated: Yes
Finished: Yes
Enclosed: Yes
Contiguous: Yes
Permitted: Yes
Wet space: Yes
Addition: No
Conversion: No

**1605 Columbine Drive, Lufkin, Angelina County,
Texas, United States, 75904**

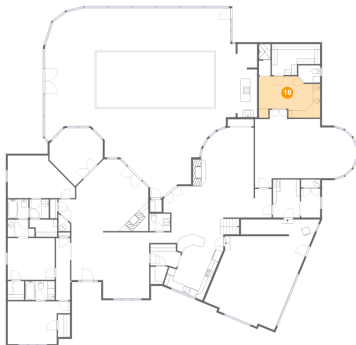
15 Floor 1 - Sunroom



Dimensions: 14'8" x 15'11"
Area: 165 sq. ft
Counted as living area: Yes

Heated: Yes
Finished: Yes
Enclosed: Yes
Contiguous: Yes
Permitted: Yes
Wet space: No
Addition: No
Conversion: No

16 Floor 1 - Bath



Dimensions: 16'10" x 11'4"
Area: 167 sq. ft
Counted as living area: Yes

Heated: Yes
Finished: Yes
Enclosed: Yes
Contiguous: Yes
Permitted: Yes
Wet space: Yes
Addition: No
Conversion: No

17 Floor 1 - Covered Patio



Dimensions: 5'10" x 20'1"
Area: 115 sq. ft
Counted as living area: No

Heated: No
Finished: Yes
Enclosed: No
Contiguous: Yes
Permitted: Yes
Wet space: No
Addition: No
Conversion: No

**1605 Columbine Drive, Lufkin, Angelina County,
Texas, United States, 75904**

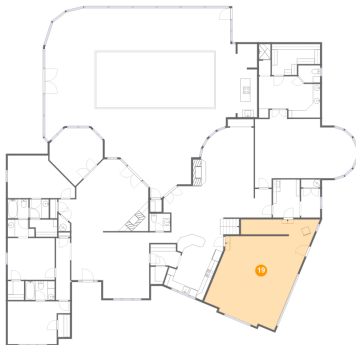
18 Floor 1 - Hall



Dimensions: 4'11" x 7'10"
Area: 38 sq. ft
Counted as living area: Yes

Heated: Yes
Finished: Yes
Enclosed: Yes
Contiguous: Yes
Permitted: Yes
Wet space: No
Addition: No
Conversion: No

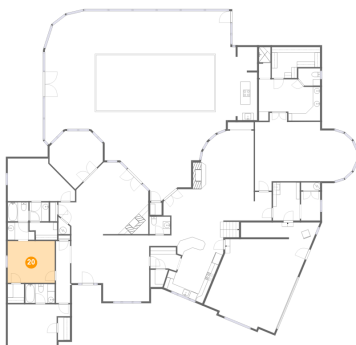
19 Floor 1 - Garage



Dimensions: 20'10" x 31'3"
Area: 595 sq. ft
Counted as living area: No

Heated: No
Finished: No
Enclosed: Yes
Contiguous: Yes
Permitted: Yes
Wet space: No
Addition: No
Conversion: No

20 Floor 1 - Bedroom



Dimensions: 12'11" x 11'5"
Area: 148 sq. ft
Counted as living area: Yes

Heated: Yes
Finished: Yes
Enclosed: Yes
Contiguous: Yes
Permitted: Yes
Wet space: No
Addition: No
Conversion: No

**1605 Columbine Drive, Lufkin, Angelina County,
Texas, United States, 75904**

21 Floor 1 - Bath



Dimensions: 5'3" x 5'3"
Area: 28 sq. ft
Counted as living area: Yes

Heated: Yes
Finished: Yes
Enclosed: Yes
Contiguous: Yes
Permitted: Yes
Wet space: Yes
Addition: No
Conversion: No

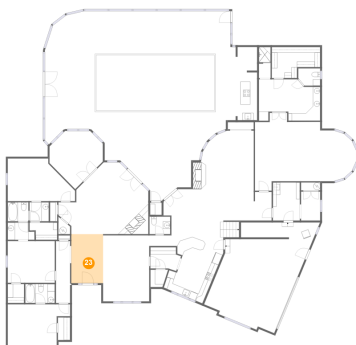
22 Floor 1 - Porch



Dimensions: 8'0" x 5'0"
Area: 40 sq. ft
Counted as living area: No

Heated: No
Finished: Yes
Enclosed: No
Contiguous: Yes
Permitted: Yes
Wet space: No
Addition: No
Conversion: No

23 Floor 1 - Foyer



Dimensions: 8'9" x 13'5"
Area: 117 sq. ft
Counted as living area: Yes

Heated: Yes
Finished: Yes
Enclosed: Yes
Contiguous: Yes
Permitted: Yes
Wet space: No
Addition: No
Conversion: No

**1605 Columbine Drive, Lufkin, Angelina County,
Texas, United States, 75904**

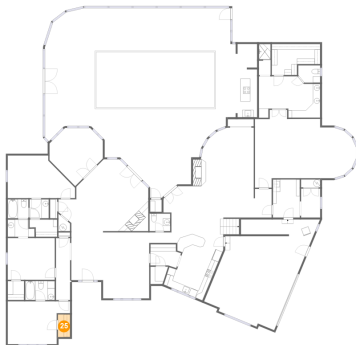
24 Floor 1 - WC



Dimensions: 6'0" x 4'9"
Area: 27 sq. ft
Counted as living area: Yes

Heated: Yes
Finished: Yes
Enclosed: Yes
Contiguous: Yes
Permitted: Yes
Wet space: Yes
Addition: No
Conversion: No

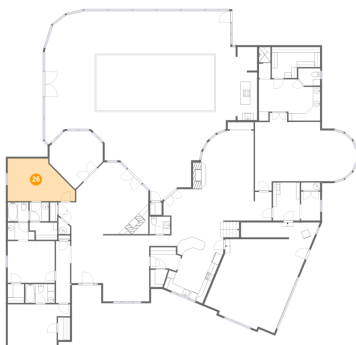
25 Floor 1 - W.I.C.



Dimensions: 3'4" x 6'3"
Area: 21 sq. ft
Counted as living area: Yes

Heated: Yes
Finished: Yes
Enclosed: Yes
Contiguous: Yes
Permitted: Yes
Wet space: No
Addition: No
Conversion: No

26 Floor 1 - Bedroom

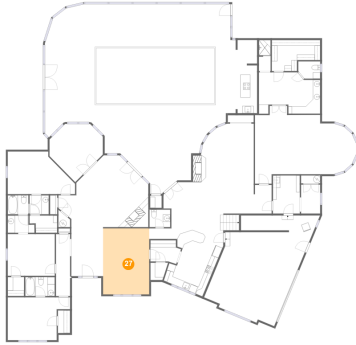


Dimensions: 18'6" x 11'8"
Area: 178 sq. ft
Counted as living area: Yes

Heated: Yes
Finished: Yes
Enclosed: Yes
Contiguous: Yes
Permitted: Yes
Wet space: No
Addition: No
Conversion: No

1605 Columbine Drive, Lufkin, Angelina County, Texas, United States, 75904

27 Floor 1 - Dining Area



Dimensions: 12'8" x 18'1"
Area: 229 sq. ft
Counted as living area: Yes

Heated: Yes
Finished: Yes
Enclosed: Yes
Contiguous: Yes
Permitted: Yes
Wet space: No
Addition: No
Conversion: No

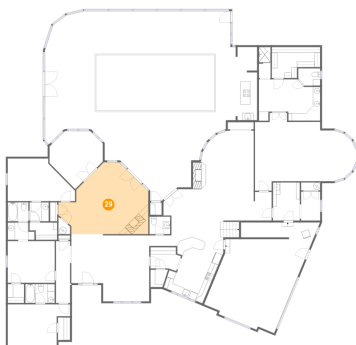
28 Floor 1 - W.I.C.



Dimensions: 7'7" x 4'9"
Area: 32 sq. ft
Counted as living area: Yes

Heated: Yes
Finished: Yes
Enclosed: Yes
Contiguous: Yes
Permitted: Yes
Wet space: No
Addition: No
Conversion: No

29 Floor 1 - Living Room

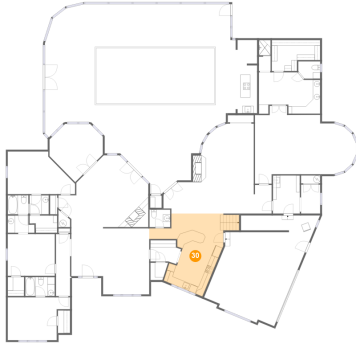


Dimensions: 24'8" x 19'9"
Area: 359 sq. ft
Counted as living area: Yes

Heated: Yes
Finished: Yes
Enclosed: Yes
Contiguous: Yes
Permitted: Yes
Wet space: No
Addition: No
Conversion: No

1605 Columbine Drive, Lufkin, Angelina County, Texas, United States, 75904

30 Floor 1 - Kitchen



Dimensions: 20'4" x 22'9"
Area: 298 sq. ft
Counted as living area: Yes

Heated: Yes
Finished: Yes
Enclosed: Yes
Contiguous: Yes
Permitted: Yes
Wet space: No
Addition: No
Conversion: No

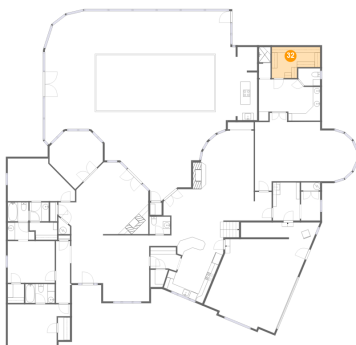
31 Floor 1 - Bath



Dimensions: 5'8" x 5'3"
Area: 30 sq. ft
Counted as living area: Yes

Heated: Yes
Finished: Yes
Enclosed: Yes
Contiguous: Yes
Permitted: Yes
Wet space: Yes
Addition: No
Conversion: No

32 Floor 1 - W.I.C.



Dimensions: 13'3" x 8'6"
Area: 94 sq. ft
Counted as living area: Yes

Heated: Yes
Finished: Yes
Enclosed: Yes
Contiguous: Yes
Permitted: Yes
Wet space: No
Addition: No
Conversion: No

1605 Columbine Drive, Lufkin, Angelina County, Texas, United States, 75904

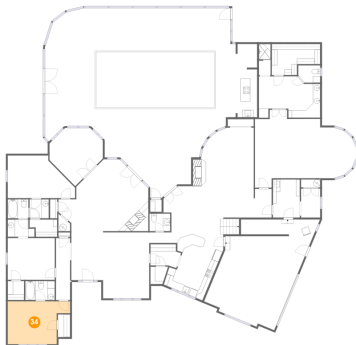
33 Floor 1 - Hall



Dimensions: 3'10" x 17'0"
Area: 66 sq. ft
Counted as living area: Yes

Heated: Yes
Finished: Yes
Enclosed: Yes
Contiguous: Yes
Permitted: Yes
Wet space: No
Addition: No
Conversion: No

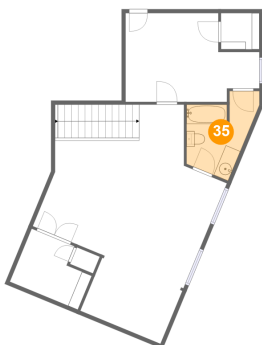
34 Floor 1 - Bedroom



Dimensions: 17'2" x 11'9"
Area: 170 sq. ft
Counted as living area: Yes

Heated: Yes
Finished: Yes
Enclosed: Yes
Contiguous: Yes
Permitted: Yes
Wet space: No
Addition: No
Conversion: No

35 Floor 2 - Bath

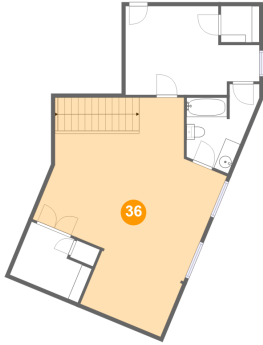


Dimensions: 9'1" x 9'9"
Area: 71 sq. ft
Counted as living area: Yes

Heated: Yes
Finished: Yes
Enclosed: Yes
Contiguous: Yes
Permitted: Yes
Wet space: Yes
Addition: No
Conversion: No

**1605 Columbine Drive, Lufkin, Angelina County,
Texas, United States, 75904**

36 Floor 2 - Room



Dimensions: 22'4" x 29'2"
Area: 470 sq. ft
Counted as living area: Yes

Heated: Yes
Finished: Yes
Enclosed: Yes
Contiguous: Yes
Permitted: Yes
Wet space: No
Addition: No
Conversion: No

37 Floor 2 - W.I.C.



Dimensions: 9'4" x 7'4"
Area: 60 sq. ft
Counted as living area: Yes

Heated: Yes
Finished: Yes
Enclosed: Yes
Contiguous: Yes
Permitted: Yes
Wet space: No
Addition: No
Conversion: No

38 Floor 2 - Bedroom

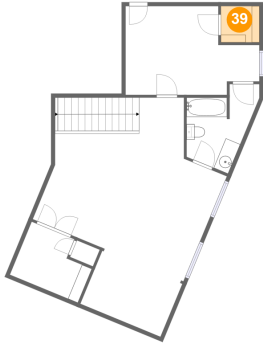


Dimensions: 17'1" x 11'4"
Area: 161 sq. ft
Counted as living area: Yes

Heated: Yes
Finished: Yes
Enclosed: Yes
Contiguous: Yes
Permitted: Yes
Wet space: No
Addition: No
Conversion: No

**1605 Columbine Drive, Lufkin, Angelina County,
Texas, United States, 75904**

39 Floor 2 - W.I.C.



Dimensions: 4'11" x 4'8"
Area: 23 sq. ft
Counted as living area: Yes

Heated: Yes
Finished: Yes
Enclosed: Yes
Contiguous: Yes
Permitted: Yes
Wet space: No
Addition: No
Conversion: No