


# 216 West Cleveland Avenue, Vinton, Roanoke County, Virginia, United States, 24179



## Property summary

 **0** Garages

 **3** Bedrooms

 **2** Bathrooms

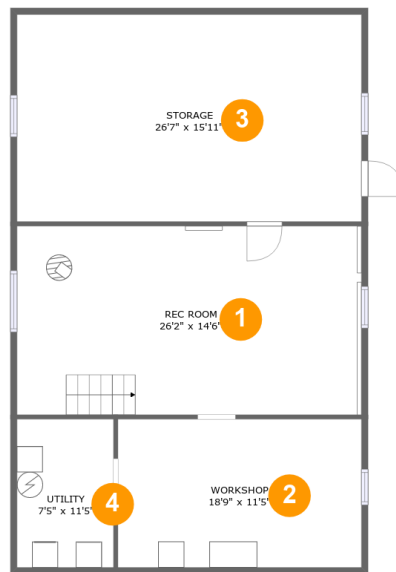
 **0** Half baths

 **3** Floors

 **1,865** Gross living area sqft

 **3,072** Total sqft

# 216 West Cleveland Avenue, Vinton, Roanoke County, Virginia, United States, 24179



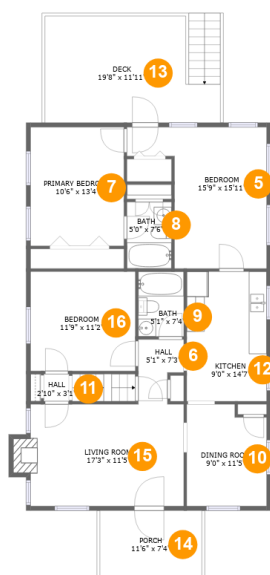
## Room dimensions

Floor 1

Total sqft: 1200 Living area: 517

#		Dimensions	sqft	Counted as living area
1	Rec Room	26'2" x 14'6"	386 sq. ft	Yes
2	Workshop	18'9" x 11'5"	214 sq. ft	No
3	Storage	26'7" x 15'11"	423 sq. ft	No
4	Utility	7'5" x 11'5"	85 sq. ft	Yes

# 216 West Cleveland Avenue, Vinton, Roanoke County, Virginia, United States, 24179



## Room dimensions

Floor 2

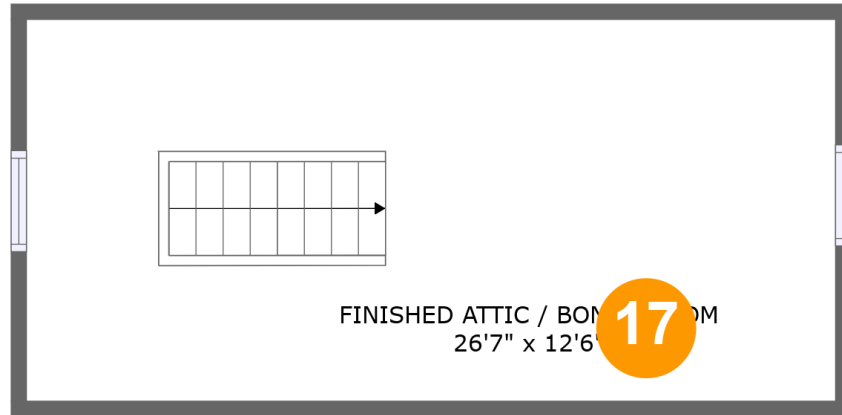
Total sqft: 1500 Living area: 1210

#		Dimensions	sqft	Counted as living area
5	Bedroom	15'9" x 15'11"	182 sq. ft	Yes
6	Hall	5'1" x 7'3"	31 sq. ft	Yes
7	Primary Bedroom	10'6" x 13'4"	140 sq. ft	Yes
8	Bath	5'0" x 7'6"	37 sq. ft	Yes
9	Bath	5'1" x 7'4"	37 sq. ft	Yes
10	Dining Room	9'0" x 11'5"	98 sq. ft	Yes
11	Hall	2'10" x 3'1"	9 sq. ft	Yes
12	Kitchen	9'0" x 14'7"	131 sq. ft	Yes
13	Deck	19'8" x 11'11"	206 sq. ft	No
14	Porch	11'6" x 7'4"	84 sq. ft	No
15	Living Room	17'3" x 11'5"	204 sq. ft	Yes

**216 West Cleveland Avenue, Vinton, Roanoke County,  
Virginia, United States, 24179**

#		Dimensions	sqft	Counted as living area
16	Bedroom	11'9" x 11'2"	132 sq. ft	Yes

216 West Cleveland Avenue, Vinton, Roanoke County, Virginia, United States, 24179



## Room dimensions

Floor 3

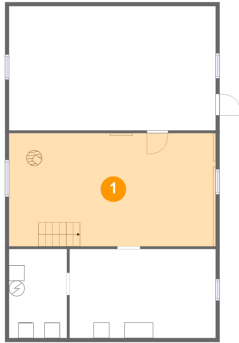
Total sqft: 372

Living area: 138

#		Dimensions	sqft	Counted as living area
17	Finished Attic / Bonus Room	26'7" x 12'6"	133 sq. ft	Yes

# 216 West Cleveland Avenue, Vinton, Roanoke County, Virginia, United States, 24179

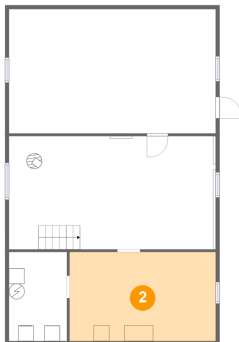
## 1 Floor 1 - Rec Room



Dimensions: 26'2" x 14'6"  
Area: 386 sq. ft  
Counted as living area: Yes

Heated: Yes  
Finished: Yes  
Enclosed: Yes  
Contiguous: Yes  
Permitted: Yes  
Wet space: No  
Addition: No  
Conversion: No

## 2 Floor 1 - Workshop

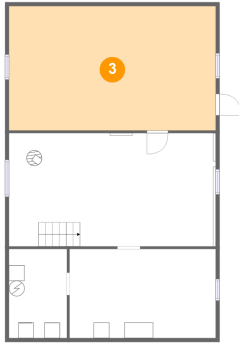


Dimensions: 18'9" x 11'5"  
Area: 214 sq. ft  
Counted as living area: No

Heated: No  
Finished: No  
Enclosed: Yes  
Contiguous: No  
Permitted: Yes  
Wet space: No  
Addition: No  
Conversion: No

# 216 West Cleveland Avenue, Vinton, Roanoke County, Virginia, United States, 24179

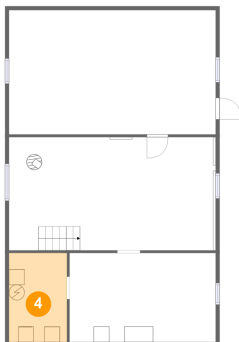
## 3 Floor 1 - Storage



Dimensions: 26'7" x 15'11"  
Area: 423 sq. ft  
Counted as living area: No

Heated: No  
Finished: No  
Enclosed: No  
Contiguous: Yes  
Permitted: Yes  
Wet space: No  
Addition: No  
Conversion: No

## 4 Floor 1 - Utility



Dimensions: 7'5" x 11'5"  
Area: 85 sq. ft  
Counted as living area: Yes

Heated: Yes  
Finished: Yes  
Enclosed: Yes  
Contiguous: Yes  
Permitted: Yes  
Wet space: No  
Addition: No  
Conversion: No

## 5 Floor 2 - Bedroom



Dimensions: 15'9" x 15'11"  
Area: 182 sq. ft  
Counted as living area: Yes

Heated: Yes  
Finished: Yes  
Enclosed: Yes  
Contiguous: Yes  
Permitted: Yes  
Wet space: No  
Addition: No  
Conversion: No

216 West Cleveland Avenue, Vinton, Roanoke County,  
Virginia, United States, 24179

**6** Floor 2 - Hall



Dimensions: 5'1" x 7'3"  
Area: 31 sq. ft  
Counted as living area: Yes

Heated: Yes  
Finished: Yes  
Enclosed: Yes  
Contiguous: Yes  
Permitted: Yes  
Wet space: No  
Addition: No  
Conversion: No

**7** Floor 2 - Primary Bedroom



Dimensions: 10'6" x 13'4"  
Area: 140 sq. ft  
Counted as living area: Yes

Heated: Yes  
Finished: Yes  
Enclosed: Yes  
Contiguous: Yes  
Permitted: Yes  
Wet space: No  
Addition: No  
Conversion: No

**8** Floor 2 - Bath



Dimensions: 5'0" x 7'6"  
Area: 37 sq. ft  
Counted as living area: Yes

Heated: Yes  
Finished: Yes  
Enclosed: Yes  
Contiguous: Yes  
Permitted: Yes  
Wet space: Yes  
Addition: No  
Conversion: No



# 216 West Cleveland Avenue, Vinton, Roanoke County, Virginia, United States, 24179

## 9 Floor 2 - Bath



Dimensions: 5'1" x 7'4"  
Area: 37 sq. ft  
Counted as living area: Yes

Heated: Yes  
Finished: Yes  
Enclosed: Yes  
Contiguous: Yes  
Permitted: Yes  
Wet space: Yes  
Addition: No  
Conversion: No

## 10 Floor 2 - Dining Room



Dimensions: 9'0" x 11'5"  
Area: 98 sq. ft  
Counted as living area: Yes

Heated: Yes  
Finished: Yes  
Enclosed: Yes  
Contiguous: Yes  
Permitted: Yes  
Wet space: No  
Addition: No  
Conversion: No

## 11 Floor 2 - Hall



Dimensions: 2'10" x 3'1"  
Area: 9 sq. ft  
Counted as living area: Yes

Heated: Yes  
Finished: Yes  
Enclosed: Yes  
Contiguous: Yes  
Permitted: Yes  
Wet space: No  
Addition: No  
Conversion: No

# 216 West Cleveland Avenue, Vinton, Roanoke County, Virginia, United States, 24179

## 12 Floor 2 - Kitchen



Dimensions: 9'0" x 14'7"  
Area: 131 sq. ft  
Counted as living area: Yes

Heated: Yes  
Finished: Yes  
Enclosed: Yes  
Contiguous: Yes  
Permitted: Yes  
Wet space: No  
Addition: No  
Conversion: No

## 13 Floor 2 - Deck



Dimensions: 19'8" x 11'11"  
Area: 206 sq. ft  
Counted as living area: No

Heated: No  
Finished: Yes  
Enclosed: No  
Contiguous: Yes  
Permitted: Yes  
Wet space: No  
Addition: No  
Conversion: No

## 14 Floor 2 - Porch



Dimensions: 11'6" x 7'4"  
Area: 84 sq. ft  
Counted as living area: No

Heated: No  
Finished: Yes  
Enclosed: No  
Contiguous: Yes  
Permitted: Yes  
Wet space: No  
Addition: No  
Conversion: No

# 216 West Cleveland Avenue, Vinton, Roanoke County, Virginia, United States, 24179

## 15 Floor 2 - Living Room



Dimensions: 17'3" x 11'5"  
Area: 204 sq. ft  
Counted as living area: Yes

Heated: Yes  
Finished: Yes  
Enclosed: Yes  
Contiguous: Yes  
Permitted: Yes  
Wet space: No  
Addition: No  
Conversion: No

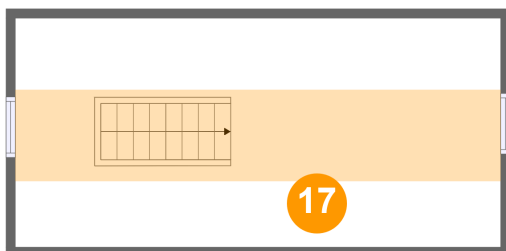
## 16 Floor 2 - Bedroom



Dimensions: 11'9" x 11'2"  
Area: 132 sq. ft  
Counted as living area: Yes

Heated: Yes  
Finished: Yes  
Enclosed: Yes  
Contiguous: Yes  
Permitted: Yes  
Wet space: No  
Addition: No  
Conversion: No

## 17 Floor 3 - Finished Attic / Bonus Room



Dimensions: 26'7" x 12'6"  
Area: 133 sq. ft  
Counted as living area: Yes

Heated: Yes  
Finished: Yes  
Enclosed: Yes  
Contiguous: Yes  
Permitted: Yes  
Wet space: No  
Addition: No  
Conversion: No