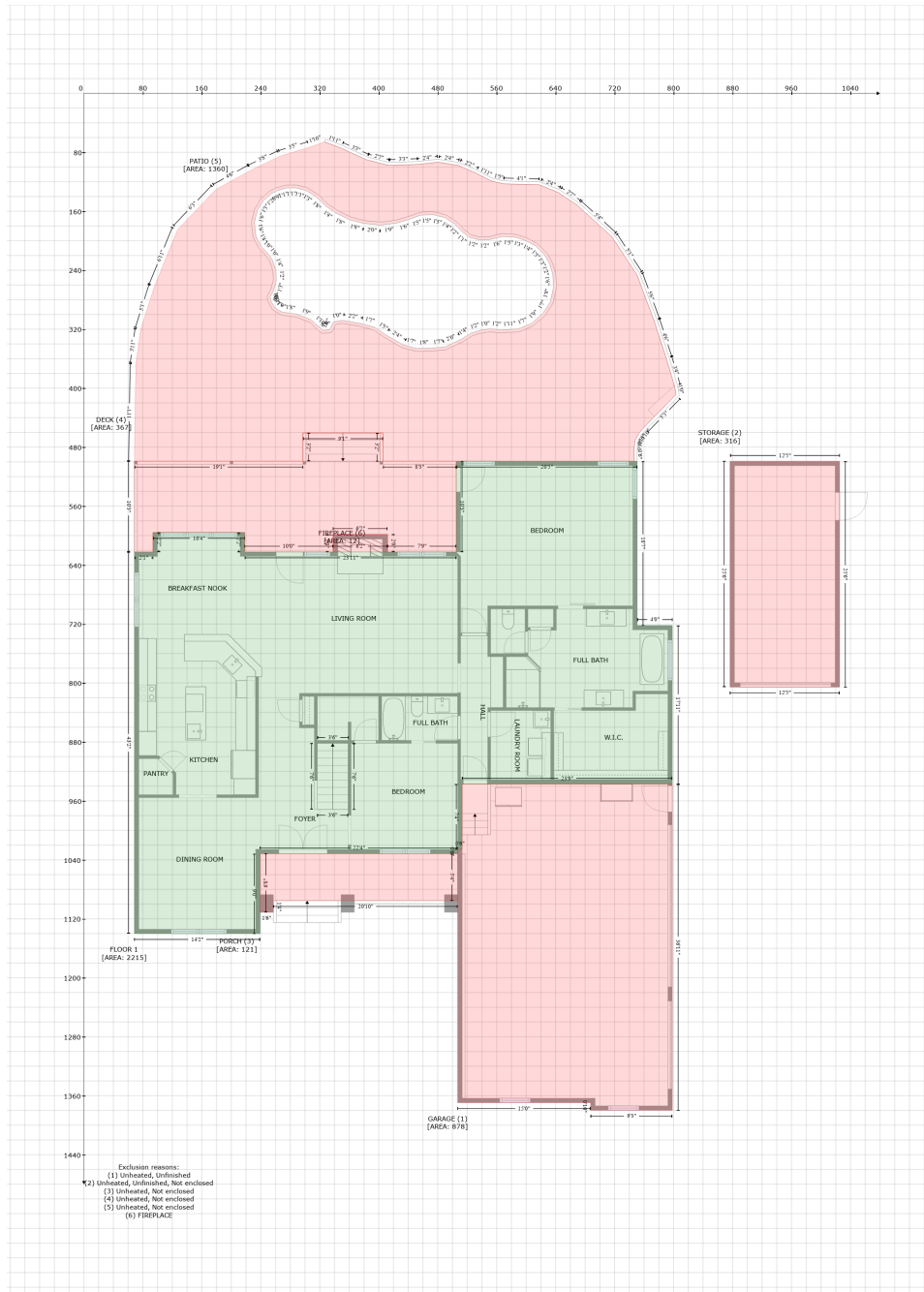


5933 North Carolina Highway 96, Youngsville, Franklin County, North Carolina, United States, 27596

Gross Living Area: 3583 sq. ft



Exclusion reasons
 (1) Unheated, Unfinished
 (2) Unheated, Unfinished, Not enclosed
 (3) Unheated, Not enclosed
 (4) Unheated, Not enclosed
 (5) Unheated, Not enclosed
 (6) FIREPLACE

Space	Area (sq. ft)	Calculation
FLOOR 1 (Living area)	2215	Coordinate Polygon Area Algorithm using inches $-((750.6 + 750.6) * (499.2 - 721.9) + (750.6 + 798.3) * (721.9 - 721.9) + (798.3 + 798.3) * (721.9 - 937.2) + (798.3 + 513.1) * (937.2 - 937.2) + (513.1 + 513.1) * (937.2 - 1025.7) + (513.1 + 507.1) * (1025.7 - 1025.7) + (507.1 + 507.1) * (1025.7 - 1031.7) + (507.1 + 239) * (1031.7 - 1031.7) + (239 + 239) * (1031.7 - 1111.2) + (239 + 239) * (1111.2 - 1140.1) + (239 + 68.5) * (1140.1 - 1140.1) + (68.5 + 68.5) * (1140.1 - 622.3) + (68.5 + 93.7) * (622.3 - 622.3) + (93.7 + 93.7) * (622.3 - 595.8) + (93.7 + 218.2) * (595.8 - 595.8) + (218.2 + 218.2) * (595.8 - 622.3) + (218.2 + 505.1) * (622.3 - 622.3) + (505.1 + 505.1) * (622.3 - 499.2) + (505.1 + 750.6) * (499.2 - 499.2)) *$

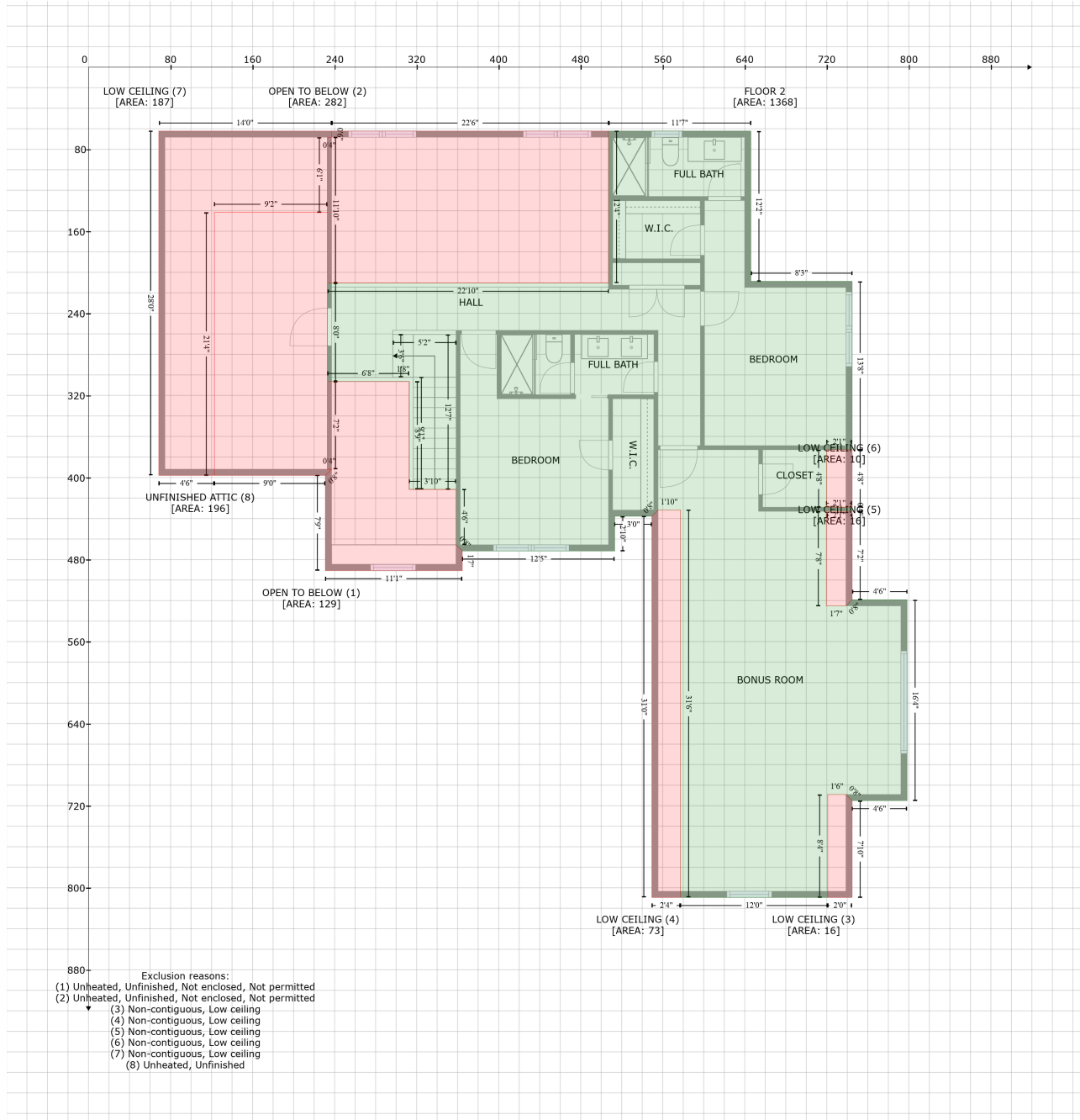
5933 North Carolina Highway 96, Youngsville, Franklin County, North Carolina, United States, 27596

Gross Living Area: 3583 sq. ft

Space	Area (sq. ft)	Calculation
		Coordinate Polygon Area Algorithm using inches
		0.5 * 0.00694
GARAGE (Non-living area)	878	$-(798.3 + 798.3) * (937.2 - 1379.8) + (798.3 + 687.6) * (1379.8 - 1379.8) + (687.6 + 687.6) * (1379.8 - 1369.4) + (687.6 + 507.1) * (1369.4 - 1369.4) + (507.1 + 507.1) * (1369.4 - 1025.7) + (507.1 + 513.1) * (1025.7 - 1025.7) + (513.1 + 513.1) * (1025.7 - 937.2) + (513.1 + 798.3) * (937.2 - 937.2) * 0.5 * 0.00694$
STORAGE (Non-living area)	316	$-(1025.2 + 1025.2) * (499.2 - 805.6) + (1025.2 + 876.6) * (805.6 - 805.6) + (876.6 + 876.6) * (805.6 - 499.2) + (876.6 + 1025.2) * (499.2 - 499.2) * 0.5 * 0.00694$
PORCH (Non-living area)	121	$-(507.1 + 507.1) * (1031.7 - 1095.4) + (507.1 + 257) * (1095.4 - 1095.4) + (257 + 257) * (1095.4 - 1111.2) + (257 + 239) * (1111.2 - 1111.2) + (239 + 239) * (1111.2 - 1031.7) + (239 + 507.1) * (1031.7 - 1031.7) * 0.5 * 0.00694$
DECK (Non-living area)	367	$-(405.7 + 405.7) * (460.8 - 499.2) + (405.7 + 505.1) * (499.2 - 499.2) + (505.1 + 505.1) * (499.2 - 622.3) + (505.1 + 412) * (622.3 - 622.3) + (412 + 412) * (622.3 - 598.5) + (412 + 338.1) * (598.5 - 598.5) + (338.1 + 338.1) * (598.5 - 622.3) + (338.1 + 218.2) * (622.3 - 622.3) + (218.2 + 218.2) * (622.3 - 595.8) + (218.2 + 93.7) * (595.8 - 595.8) + (93.7 + 93.7) * (595.8 - 622.3) + (93.7 + 68.5) * (622.3 - 622.3) + (68.5 + 68.5) * (622.3 - 499.2) + (68.5 + 297.2) * (499.2 - 499.2) + (297.2 + 297.2) * (499.2 - 460.8) + (297.2 + 405.7) * (460.8 - 460.8) * 0.5 * 0.00694$
PATIO (Non-living area)	1360	$-(326.5 + 348) * (65.9 - 73.9) + (348 + 383.4) * (73.9 - 90.1) + (383.4 + 413.5) * (90.1 - 97.8) + (413.5 + 452.9) * (97.8 - 96.5) + (452.9 + 480.4) * (96.5 - 93.4) + (480.4 + 507.9) * (93.4 - 97.8) + (507.9 + 531.8) * (97.8 - 108.2) + (531.8 + 552.4) * (108.2 - 118.8) + (552.4 + 569.2) * (118.8 - 122.8) + (569.2 + 617.6) * (122.8 - 124) + (617.6 + 643.4) * (124 - 134.4) + (643.4 + 669.2) * (134.4 - 151.7) + (669.2 + 716.5) * (151.7 - 194.7) + (716.5 + 750.3) * (194.7 - 246.1) + (750.3 + 773.4) * (246.1 - 308) + (773.4 + 789.9) * (308 - 359) + (789.9 + 801.2) * (359 - 396.9) + (801.2 + 803.3) * (396.9 - 408.7) + (803.3 + 759.6) * (408.7 - 453.6) + (759.6 + 752.9) * (453.6 - 461.4) + (752.9 + 747.6) * (461.4 - 471) + (747.6 + 746.6) * (471 - 481.2) + (746.6 + 746.6) * (481.2 - 499.2) + (746.6 + 405.7) * (499.2 - 499.2) + (405.7 + 405.7) * (499.2 - 460.8) + (405.7 + 297.2) * (460.8 - 460.8) + (297.2 + 297.2) * (460.8 - 499.2) + (297.2 + 68.5) * (499.2 - 499.2) + (68.5 + 70.7) * (499.2 - 366.7) + (70.7 + 77.2) * (366.7 - 320.5) + (77.2 + 95.8) * (320.5 - 262) + (95.8 + 127.2) * (262 - 185) + (127.2 + 178.9) * (185 - 130.6) + (178.9 + 226.2) * (130.6 - 104.6) + (226.2 + 266) * (104.6 - 85.3) + (266 + 305.6) * (85.3 - 73.3) + (305.6 + 326.5) * (73.3 - 65.9) * 0.5 * 0.00694 + -((288 + 274.8) * (128.4 - 128.5) + (274.8 + 261.9) * (128.5 - 132.1) + (261.9 + 254) * (132.1 - 136.2) + (254 + 243.4) * (136.2 - 145.7) + (243.4 + 235.6) * (145.7 - 158) + (235.6 + 231.4) * (158 - 175.2) + (231.4 + 233.3) * (175.2 - 193.4) + (233.3 + 240.2) * (193.4 - 207.3) + (240.2 + 248.2) * (207.3 - 215.7) + (248.2 + 255.4) * (215.7 - 225.4) + (255.4 + 260.5) * (225.4 - 240.1) + (260.5 + 261.1) * (240.1 - 254) + (261.1 + 256.9) * (254 - 268.6) + (256.9 + 252.7) * (268.6 - 276.1) + (252.7 + 253.7) * (276.1 - 281.4) + (253.7 + 258.9) * (281.4 - 290.8) + (258.9 + 269.2) * (290.8 - 296.8) + (269.2 + 289) * (296.8 - 299.6) + (289 + 308.7) * (299.6 - 307.4) + (308.7 + 324.8) * (307.4 - 321.7) + (324.8 + 333.4) * (321.7 - 320.6) + (333.4 + 338.7) * (320.6 - 310.1) + (338.7 + 350.8) * (310.1 - 307.9) + (350.8 + 376.7) * (307.9 - 312.5) + (376.7 + 395) * (312.5 - 317.6) + (395 + 409) * (317.6 - 327.3) + (409 + 432.9) * (327.3 - 341.2) + (432.9 + 451.1) * (341.2 - 346) + (451.1 + 471.3) * (346 - 345.8) + (471.3 + 490.3) * (345.8 - 343.8) + (490.3 + 512.1) * (343.8 - 333.5) + (512.1 + 525.6) * (333.5 - 325.2) + (525.6 + 539.4) * (325.2 - 321) + (539.4 + 551.5) * (321 - 319.5) + (551.5 + 565.8) * (319.5 - 321) + (565.8 + 589.1) * (321 - 319.7) + (589.1 + 606.8) * (319.7 - 312.4) + (606.8 + 622.8) * (312.4 - 298.6) + (622.8 + 632.9) * (298.6 - 282.7) + (632.9 + 637.1) * (282.7 - 263.1) + (637.1 + 636.1) * (263.1 - 245.2) + (636.1 + 632.1) * (245.2 - 232) + (632.1 + 624.7) * (232 - 218.8) + (624.7 + 612.6) * (218.8 - 207) + (612.6 + 598.9) * (207 - 199.6) + (598.9 + 584.8) * (199.6 - 195.1) + (584.8 + 567.6) * (195.1 - 194.3) + (567.6 + 550.3) * (194.3 - 198.6) + (550.3 + 536.6) * (198.6 - 199.1) + (536.6 + 523) * (199.1 - 195.4) + (523 + 512.7) * (195.4 - 187.4) + (512.7 + 503.2) * (187.4 - 177.4) + (503.2 + 489.5) * (177.4 - 168.5) + (489.5 + 473.3) * (168.5 - 164.5) + (473.3 + 456.7) * (164.5 - 165.3) + (456.7 + 441.2) * (165.3 - 171) + (441.2 + 423.7) * (171 - 176.1) + (423.7 + 403) * (176.1 - 178.8) + (403 + 379.4) * (178.8 - 176.5) + (379.4 + 359.8) * (176.5 - 171.3) + (359.8 + 342.1) * (171.3 - 162.5) + (342.1 + 328.6) * (162.5 - 153.3) + (328.6 + 314.1) * (153.3 - 139.5) + (314.1 + 301) * (139.5 - 131.7) + (301 + 288) * (131.7 - 128.4) * 0.5 * 0.00694$
FIREPLACE (Non-living area)	12	$-(412 + 412) * (598.5 - 622.3) + (412 + 338.1) * (622.3 - 622.3) + (338.1 + 338.1) * (622.3 - 598.5) + (338.1 + 412) * (598.5 - 598.5) * 0.5 * 0.00694$

5933 North Carolina Highway 96, Youngsville, Franklin County, North Carolina, United States, 27596

Gross Living Area: 3583 sq. ft



Space	Area (sq. ft)	Calculation
FLOOR 2 (Living area)	1368	Coordinate Polygon Area Algorithm using inches $-((645.9 + 645.9) * (62.3 - 208.8) + (645.9 + 744.7) * (208.8 - 208.8) + (744.7 + 744.7) * (208.8 - 373) + (744.7 + 719.9) * (373 - 373) + (719.9 + 719.9) * (373 - 429) + (719.9 + 744.7) * (429 - 429) + (744.7 + 744.7) * (429 - 433) + (744.7 + 719.6) * (433 - 433) + (719.6 + 719.6) * (433 - 525.2) + (719.6 + 738.7) * (525.2 - 525.2) + (738.7 + 744.7) * (525.2 - 519.2) + (744.7 + 798.3) * (519.2 - 519.2) + (798.3 + 798.3) * (519.2 - 715) + (798.3 + 744.7) * (715 - 715) + (744.7 + 738.7) * (715 - 709) + (738.7 + 720.9) * (709 - 709) + (720.9 + 720.9) * (709 - 809.4) + (720.9 + 577.3) * (809.4 - 809.4) + (577.3 + 577.3) * (809.4 - 431.8) + (577.3 + 555.4) * (431.8 - 431.8) + (555.4 +$

5933 North Carolina Highway 96, Youngsville, Franklin County, North Carolina, United States, 27596

Gross Living Area: 3583 sq. ft

Space	Area (sq. ft)	Calculation <small>Coordinate Polygon Area Algorithm using inches</small>
		$549.4 * (431.8 - 437.8) + (549.4 + 513.1) * (437.8 - 437.8) + (513.1 + 513.1) * (437.8 - 471.7) + (513.1 + 364.5) * (471.7 - 471.7) + (364.5 + 358.5) * (471.7 - 465.7) + (358.5 + 358.5) * (465.7 - 411.6) + (358.5 + 312.8) * (411.6 - 411.6) + (312.8 + 312.8) * (411.6 - 306.5) + (312.8 + 233) * (306.5 - 306.5) + (233 + 233) * (306.5 - 210.5) + (233 + 507.1) * (210.5 - 210.5) + (507.1 + 507.1) * (210.5 - 62.3) + (507.1 + 645.9) * (62.3 - 62.3) * 0.5 * 0.00694$
OPEN TO BELOW (Non-living area)	129	$-((312.8 + 312.8) * (306.5 - 411.6) + (312.8 + 358.5) * (411.6 - 411.6) + (358.5 + 358.5) * (411.6 - 465.7) + (358.5 + 364.5) * (465.7 - 471.7) + (364.5 + 364.5) * (471.7 - 490.8) + (364.5 + 231) * (490.8 - 490.8) + (231 + 231) * (490.8 - 398) + (231 + 237) * (398 - 392) + (237 + 233) * (392 - 392) + (233 + 233) * (392 - 306.5) + (233 + 312.8) * (306.5 - 306.5)) * 0.5 * 0.00694$
OPEN TO BELOW (Non-living area)	282	$-((507.1 + 507.1) * (62.3 - 210.5) + (507.1 + 233) * (210.5 - 210.5) + (233 + 233) * (210.5 - 68.3) + (233 + 237) * (68.3 - 68.3) + (237 + 237) * (68.3 - 62.3) + (237 + 507.1) * (62.3 - 62.3)) * 0.5 * 0.00694$
LOW CEILING (Non-living area)	16	$-((738.7 + 744.7) * (709 - 715) + (744.7 + 744.7) * (715 - 809.4) + (744.7 + 720.9) * (809.4 - 809.4) + (720.9 + 720.9) * (809.4 - 709) + (720.9 + 738.7) * (709 - 709)) * 0.5 * 0.00694$
LOW CEILING (Non-living area)	73	$-((577.3 + 577.3) * (431.8 - 809.4) + (577.3 + 549.4) * (809.4 - 809.4) + (549.4 + 549.4) * (809.4 - 437.8) + (549.4 + 555.4) * (437.8 - 431.8) + (555.4 + 577.3) * (431.8 - 431.8)) * 0.5 * 0.00694$
LOW CEILING (Non-living area)	16	$-((744.7 + 744.7) * (433 - 519.2) + (744.7 + 738.7) * (519.2 - 525.2) + (738.7 + 719.6) * (525.2 - 525.2) + (719.6 + 719.6) * (525.2 - 433) + (719.6 + 744.7) * (433 - 433)) * 0.5 * 0.00694$
LOW CEILING (Non-living area)	10	$-((744.7 + 744.7) * (373 - 429) + (744.7 + 719.9) * (429 - 429) + (719.9 + 719.9) * (429 - 373) + (719.9 + 744.7) * (373 - 373)) * 0.5 * 0.00694$
LOW CEILING (Non-living area)	187	$-((237 + 237) * (62.3 - 68.3) + (237 + 233) * (68.3 - 68.3) + (233 + 233) * (68.3 - 141.6) + (233 + 122.8) * (141.6 - 141.6) + (122.8 + 122.8) * (141.6 - 398) + (122.8 + 68.5) * (398 - 398) + (68.5 + 68.5) * (398 - 62.3) + (68.5 + 237) * (62.3 - 62.3)) * 0.5 * 0.00694$
UNFINISHED ATTIC (Non-living area)	196	$-((233 + 233) * (141.6 - 392) + (233 + 237) * (392 - 392) + (237 + 231) * (392 - 398) + (231 + 122.8) * (398 - 398) + (122.8 + 122.8) * (398 - 141.6) + (122.8 + 233) * (141.6 - 141.6)) * 0.5 * 0.00694$