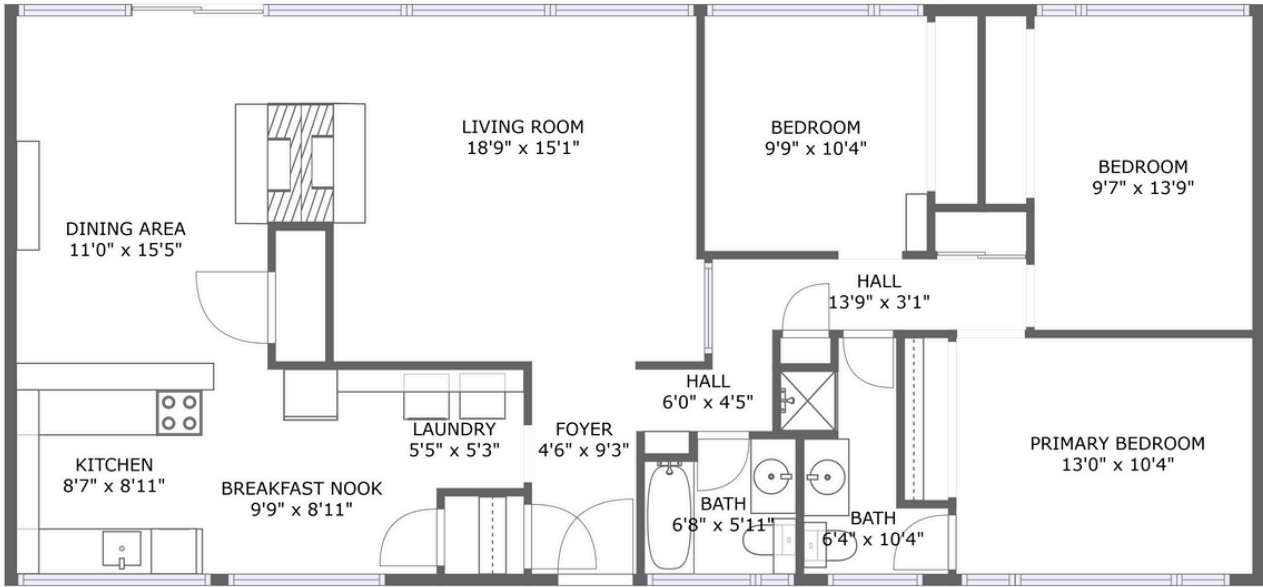



Home data report


**16223 Northeast 28th  
Street, Bellevue, Washington, United States**





FLOOR 1

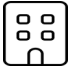
**Property summary**


 **0**  
Garages


 **3**  
Bedrooms

 **2**  
Bathrooms

 **0**  
Half baths

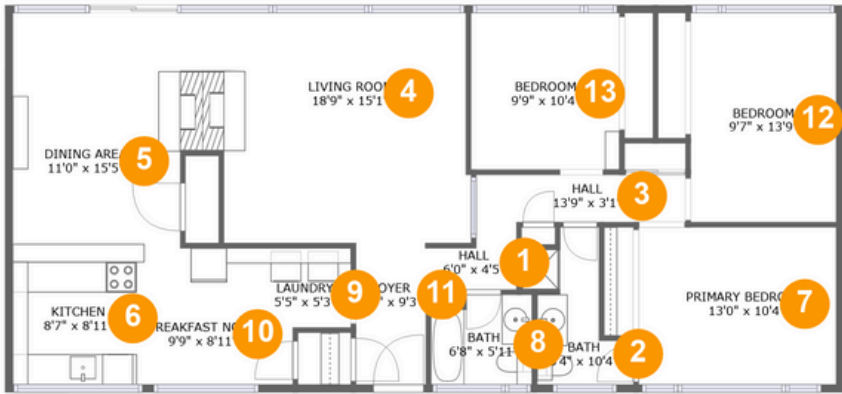
 **1**  
Floors

 **1,397**  
Gross living  
area sqft

 **1,397**  
Total sqft

Home data report

**16223 Northeast 28th  
Street, Bellevue, Washington, United States**



**Room dimensions**

**Floor 1** **Total sqft:** 1397    **Living area:** 1397

#		Dimensions	sqft	Counted as living area
1	Hall	6'0" x 4'5"	23 sq. ft	Yes
2	Bath	6'4" x 10'4"	48 sq. ft	Yes
3	Hall	13'9" x 3'1"	43 sq. ft	Yes
4	Living Room	18'9" x 15'1"	267 sq. ft	Yes
5	Dining Room	11'0" x 15'5"	170 sq. ft	Yes
6	Kitchen	8'7" x 8'11"	77 sq. ft	Yes
7	Bedroom	13'0" x 10'4"	134 sq. ft	Yes
8	Bath	6'8" x 5'11"	37 sq. ft	Yes
9	Utility	5'5" x 5'3"	28 sq. ft	Yes
10	Nook	9'9" x 8'11"	79 sq. ft	Yes
11	Entry	4'6" x 9'3"	42 sq. ft	Yes

Home data report

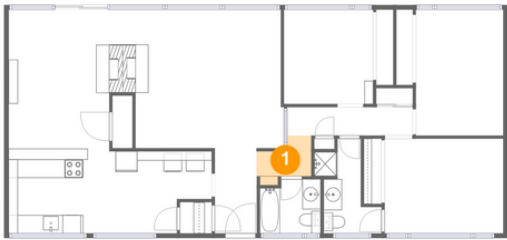
**16223 Northeast 28th  
Street,Bellevue,Washington,United States**

#		Dimensions	sqft	Counted as living area
12	Bedroom	9'7" x 13'9"	131 sq. ft	Yes
13	Bedroom	9'9" x 10'4"	100 sq. ft	Yes

Home data report

**16223 Northeast 28th  
Street,Bellevue,Washington,United States**

**1 Floor 1 - Hall**



Dimensions: 6'0" x 4'5"  
Area: 23 sq. ft  
Counted as living area: Yes

Heated: Yes  
Finished: Yes  
Enclosed: Yes  
Contiguous: Yes  
Permitted: Yes  
Wet space: No  
Addition: No  
Conversion: No

**2 Floor 1 - Bath**



Dimensions: 6'4" x 10'4"  
Area: 48 sq. ft  
Counted as living area: Yes

Heated: Yes  
Finished: Yes  
Enclosed: Yes  
Contiguous: Yes  
Permitted: Yes  
Wet space: Yes  
Addition: No  
Conversion: No

Home data report

**16223 Northeast 28th  
Street, Bellevue, Washington, United States**

**3 Floor 1 - Hall**



Dimensions: 13'9" x 3'1"  
Area: 43 sq. ft  
Counted as living area: Yes

Heated: Yes  
Finished: Yes  
Enclosed: Yes  
Contiguous: Yes  
Permitted: Yes  
Wet space: No  
Addition: No  
Conversion: No

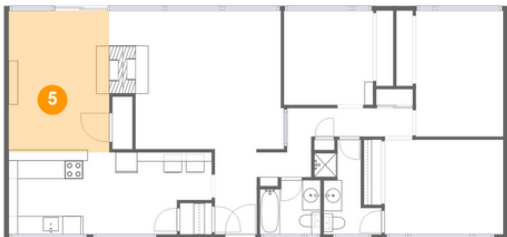
**4 Floor 1 - Living Room**



Dimensions: 18'9" x 15'1"  
Area: 267 sq. ft  
Counted as living area: Yes

Heated: Yes  
Finished: Yes  
Enclosed: Yes  
Contiguous: Yes  
Permitted: Yes  
Wet space: No  
Addition: No  
Conversion: No

**5 Floor 1 - Dining Room**



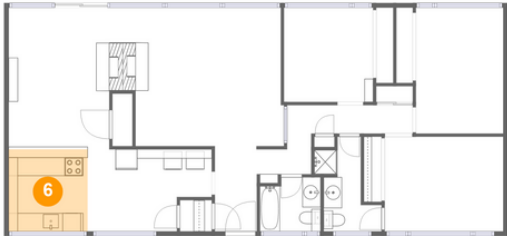
Dimensions: 11'0" x 15'5"  
Area: 170 sq. ft  
Counted as living area: Yes

Heated: Yes  
Finished: Yes  
Enclosed: Yes  
Contiguous: Yes  
Permitted: Yes  
Wet space: No  
Addition: No  
Conversion: No

Home data report

**16223 Northeast 28th  
Street, Bellevue, Washington, United States**

**6 Floor 1 - Kitchen**



Dimensions: 8'7" x 8'11"  
Area: 77 sq. ft  
Counted as living area: Yes

Heated: Yes  
Finished: Yes  
Enclosed: Yes  
Contiguous: Yes  
Permitted: Yes  
Wet space: No  
Addition: No  
Conversion: No

**7 Floor 1 - Bedroom**



Dimensions: 13'0" x 10'4"  
Area: 134 sq. ft  
Counted as living area: Yes

Heated: Yes  
Finished: Yes  
Enclosed: Yes  
Contiguous: Yes  
Permitted: Yes  
Wet space: No  
Addition: No  
Conversion: No

**8 Floor 1 - Bath**



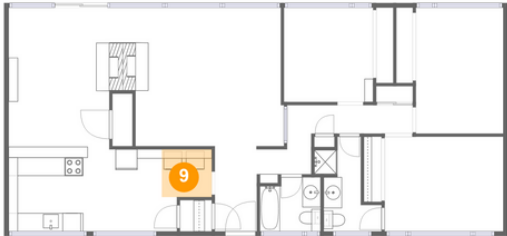
Dimensions: 6'8" x 5'11"  
Area: 37 sq. ft  
Counted as living area: Yes

Heated: Yes  
Finished: Yes  
Enclosed: Yes  
Contiguous: Yes  
Permitted: Yes  
Wet space: Yes  
Addition: No  
Conversion: No

Home data report

**16223 Northeast 28th  
Street, Bellevue, Washington, United States**

**9 Floor 1 - Utility**



Dimensions: 5'5" x 5'3"  
Area: 28 sq. ft  
Counted as living area: Yes

Heated: Yes  
Finished: Yes  
Enclosed: Yes  
Contiguous: Yes  
Permitted: Yes  
Wet space: No  
Addition: No  
Conversion: No

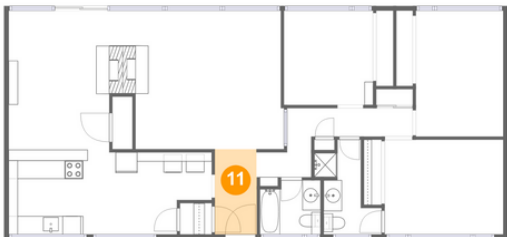
**10 Floor 1 - Nook**



Dimensions: 9'9" x 8'11"  
Area: 79 sq. ft  
Counted as living area: Yes

Heated: Yes  
Finished: Yes  
Enclosed: Yes  
Contiguous: Yes  
Permitted: Yes  
Wet space: No  
Addition: No  
Conversion: No

**11 Floor 1 - Entry**



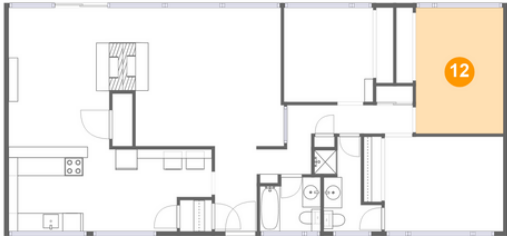
Dimensions: 4'6" x 9'3"  
Area: 42 sq. ft  
Counted as living area: Yes

Heated: Yes  
Finished: Yes  
Enclosed: Yes  
Contiguous: Yes  
Permitted: Yes  
Wet space: No  
Addition: No  
Conversion: No

Home data report

**16223 Northeast 28th  
Street, Bellevue, Washington, United States**

**12 Floor 1 - Bedroom**



Dimensions: 9'7" x 13'9"  
Area: 131 sq. ft  
Counted as living area: Yes

Heated: Yes  
Finished: Yes  
Enclosed: Yes  
Contiguous: Yes  
Permitted: Yes  
Wet space: No  
Addition: No  
Conversion: No

**13 Floor 1 - Bedroom**



Dimensions: 9'9" x 10'4"  
Area: 100 sq. ft  
Counted as living area: Yes

Heated: Yes  
Finished: Yes  
Enclosed: Yes  
Contiguous: Yes  
Permitted: Yes  
Wet space: No  
Addition: No  
Conversion: No