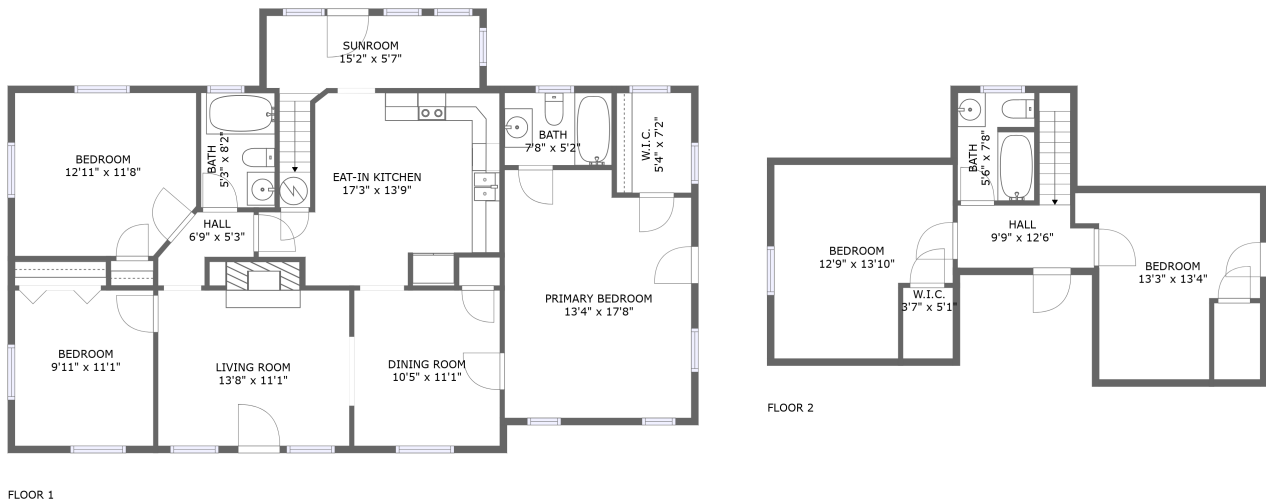



2003 Selden St, Richmond, VA, US



Property summary

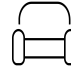
 **0** Garages

 **5** Bedrooms

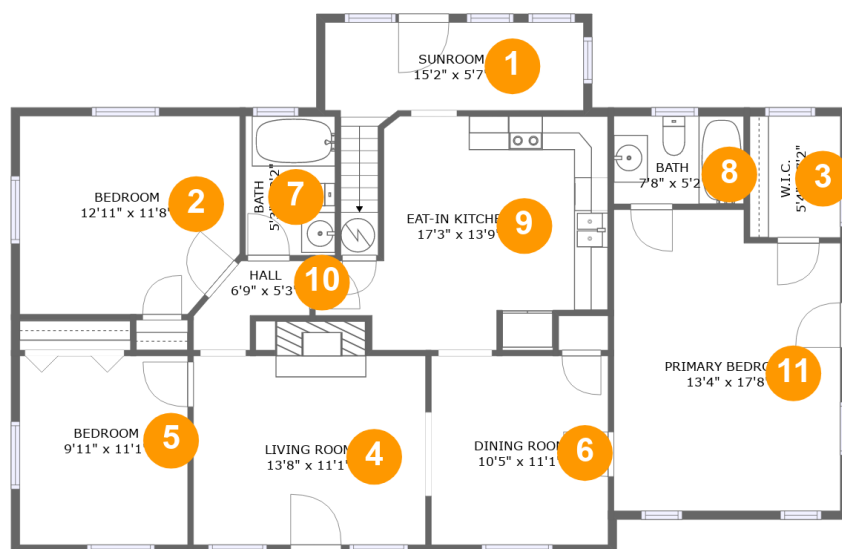
 **3** Bathrooms

 **0** Half baths

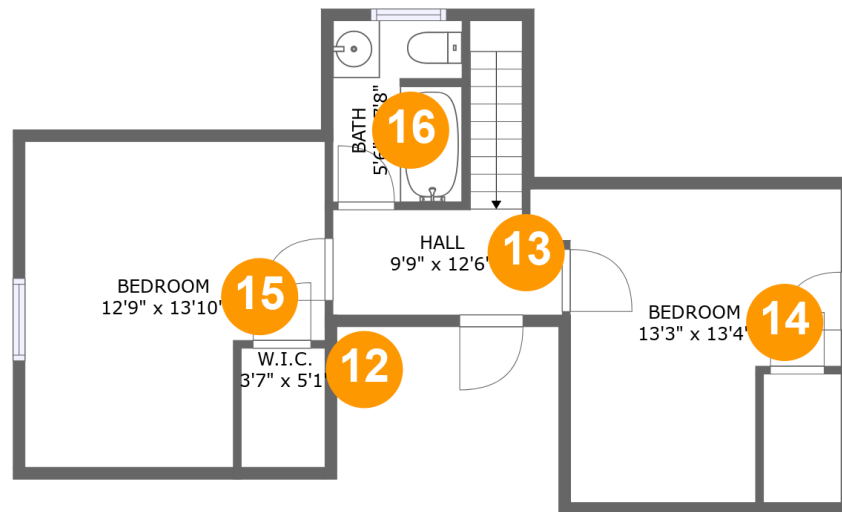
 **2** Floors

 **1,711** Gross living area sqft

 **1,861** Total sqft

2003 Selden St, Richmond, VA, US**Room dimensions****Floor 1****Total sqft: 1355 Living area: 1355**

#		Dimensions	sqft	Counted as living area
1	Sunroom	15'2" x 5'7"	98 sq. ft	Yes
2	Bedroom	12'11" x 11'8"	146 sq. ft	Yes
3	W.I.C.	5'4" x 7'2"	38 sq. ft	Yes
4	Living Room	13'8" x 11'1"	165 sq. ft	Yes
5	Bedroom	9'11" x 11'1"	110 sq. ft	Yes
6	Dining Room	10'5" x 11'1"	116 sq. ft	Yes
7	Bath	5'3" x 8'2"	43 sq. ft	Yes
8	Bath	7'8" x 5'2"	40 sq. ft	Yes
9	Eat-in Kitchen	17'3" x 13'9"	187 sq. ft	Yes
10	Hall	6'9" x 5'3"	24 sq. ft	Yes
11	Primary Bedroom	13'4" x 17'8"	225 sq. ft	Yes

2003 Selden St, Richmond, VA, US**Room dimensions**

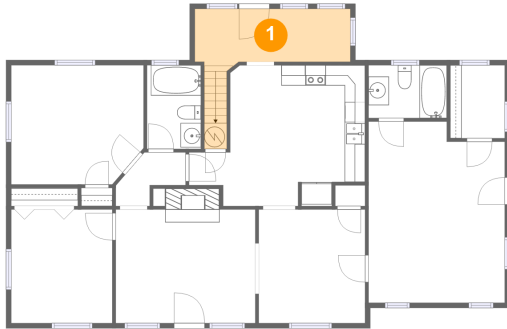
Floor 2

Total sqft: 506 Living area: 356

#		Dimensions	sqft	Counted as living area
12	W.I.C.	3'7" x 5'1"	10 sq. ft	Yes
13	Hall	9'9" x 12'6"	59 sq. ft	Yes
14	Bedroom	13'3" x 13'4"	89 sq. ft	Yes
15	Bedroom	12'9" x 13'10"	108 sq. ft	Yes
16	Bath	5'6" x 7'8"	41 sq. ft	Yes

2003 Selden St, Richmond, VA, US

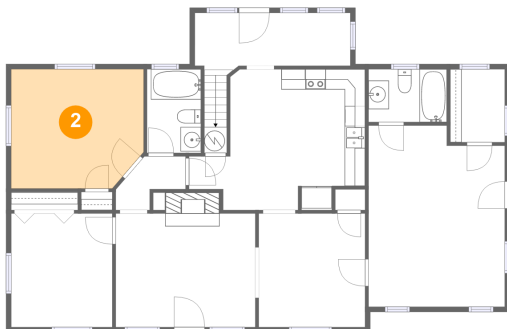
1 Floor 1 - Sunroom



Dimensions: 15'2" x 5'7"
Area: 98 sq. ft
Counted as living area: Yes

Heated: Yes
Finished: Yes
Enclosed: Yes
Contiguous: Yes
Permitted: Yes
Wet space: No
Addition: No
Conversion: No

2 Floor 1 - Bedroom



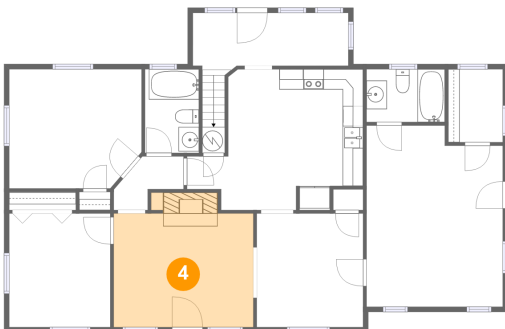
Dimensions: 12'11" x 11'8"
Area: 146 sq. ft
Counted as living area: Yes

Heated: Yes
Finished: Yes
Enclosed: Yes
Contiguous: Yes
Permitted: Yes
Wet space: No
Addition: No
Conversion: No

2003 Selden St, Richmond, VA, US**3 Floor 1 - W.I.C.**

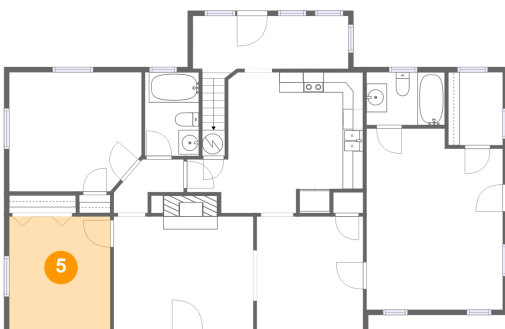
Dimensions: 5'4" x 7'2"
Area: 38 sq. ft
Counted as living area: Yes

Heated: Yes
Finished: Yes
Enclosed: Yes
Contiguous: Yes
Permitted: Yes
Wet space: No
Addition: No
Conversion: No

4 Floor 1 - Living Room

Dimensions: 13'8" x 11'1"
Area: 165 sq. ft
Counted as living area: Yes

Heated: Yes
Finished: Yes
Enclosed: Yes
Contiguous: Yes
Permitted: Yes
Wet space: No
Addition: No
Conversion: No

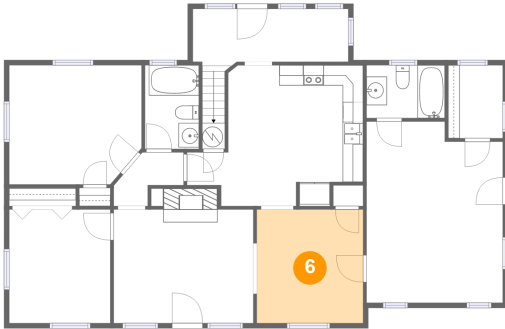
5 Floor 1 - Bedroom

Dimensions: 9'11" x 11'1"
Area: 110 sq. ft
Counted as living area: Yes

Heated: Yes
Finished: Yes
Enclosed: Yes
Contiguous: Yes
Permitted: Yes
Wet space: No
Addition: No
Conversion: No

2003 Selden St, Richmond, VA, US

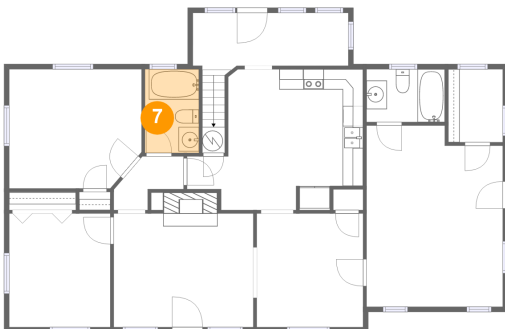
6 Floor 1 - Dining Room



Dimensions: 10'5" x 11'1"
Area: 116 sq. ft
Counted as living area: Yes

Heated: Yes
Finished: Yes
Enclosed: Yes
Contiguous: Yes
Permitted: Yes
Wet space: No
Addition: No
Conversion: No

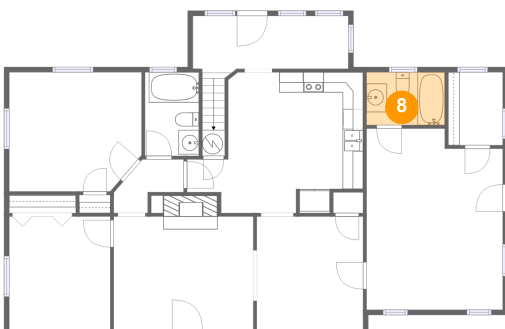
7 Floor 1 - Bath



Dimensions: 5'3" x 8'2"
Area: 43 sq. ft
Counted as living area: Yes

Heated: Yes
Finished: Yes
Enclosed: Yes
Contiguous: Yes
Permitted: Yes
Wet space: Yes
Addition: No
Conversion: No

8 Floor 1 - Bath

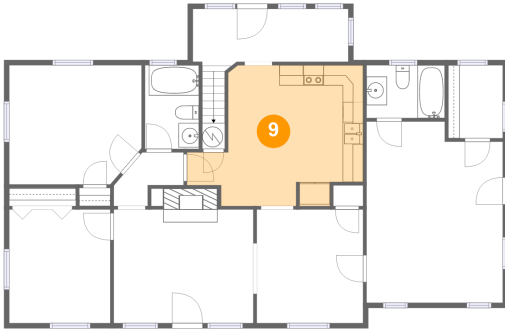


Dimensions: 7'8" x 5'2"
Area: 40 sq. ft
Counted as living area: Yes

Heated: Yes
Finished: Yes
Enclosed: Yes
Contiguous: Yes
Permitted: Yes
Wet space: Yes
Addition: No
Conversion: No

2003 Selden St, Richmond, VA, US

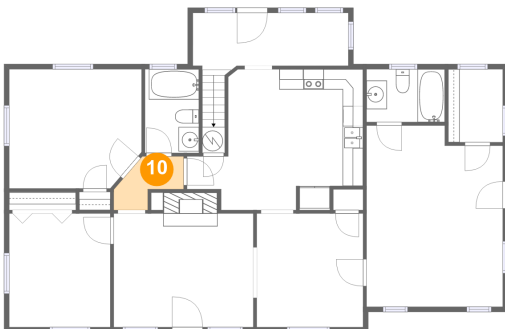
9 Floor 1 - Eat-in Kitchen



Dimensions: 17'3" x 13'9"
Area: 187 sq. ft
Counted as living area: Yes

Heated: Yes
Finished: Yes
Enclosed: Yes
Contiguous: Yes
Permitted: Yes
Wet space: No
Addition: No
Conversion: No

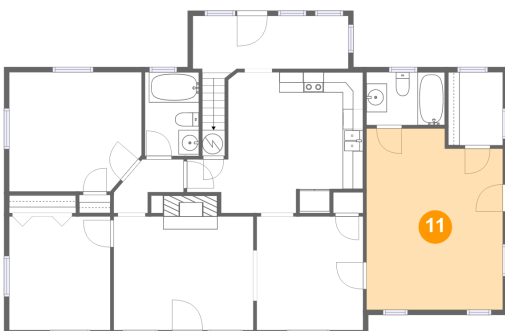
10 Floor 1 - Hall



Dimensions: 6'9" x 5'3"
Area: 24 sq. ft
Counted as living area: Yes

Heated: Yes
Finished: Yes
Enclosed: Yes
Contiguous: Yes
Permitted: Yes
Wet space: No
Addition: No
Conversion: No

11 Floor 1 - Primary Bedroom

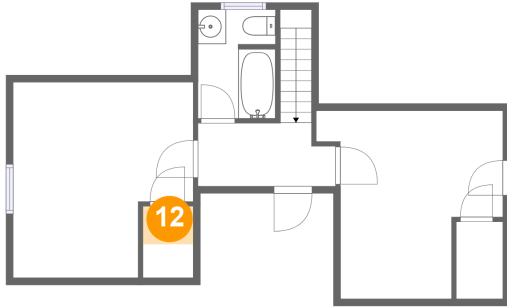


Dimensions: 13'4" x 17'8"
Area: 225 sq. ft
Counted as living area: Yes

Heated: Yes
Finished: Yes
Enclosed: Yes
Contiguous: Yes
Permitted: Yes
Wet space: No
Addition: No
Conversion: No

2003 Selden St, Richmond, VA, US

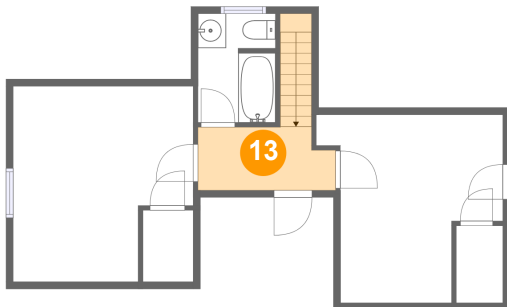
12 Floor 2 - W.I.C.



Dimensions: 3'7" x 5'1"
Area: 10 sq. ft
Counted as living area: Yes

Heated: Yes
Finished: Yes
Enclosed: Yes
Contiguous: Yes
Permitted: Yes
Wet space: No
Addition: No
Conversion: No

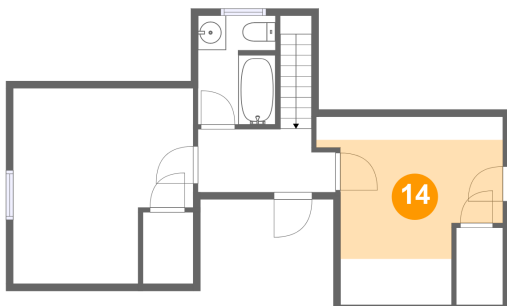
13 Floor 2 - Hall



Dimensions: 9'9" x 12'6"
Area: 59 sq. ft
Counted as living area: Yes

Heated: Yes
Finished: Yes
Enclosed: Yes
Contiguous: Yes
Permitted: Yes
Wet space: No
Addition: No
Conversion: No

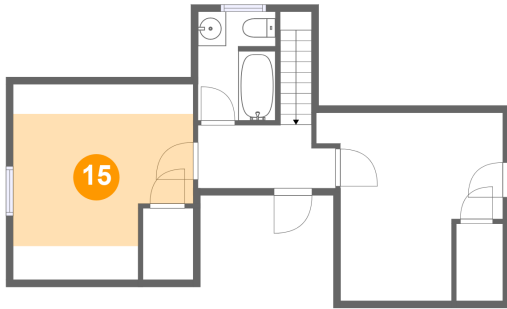
14 Floor 2 - Bedroom



Dimensions: 13'3" x 13'4"
Area: 89 sq. ft
Counted as living area: Yes

Heated: Yes
Finished: Yes
Enclosed: Yes
Contiguous: Yes
Permitted: Yes
Wet space: No
Addition: No
Conversion: No

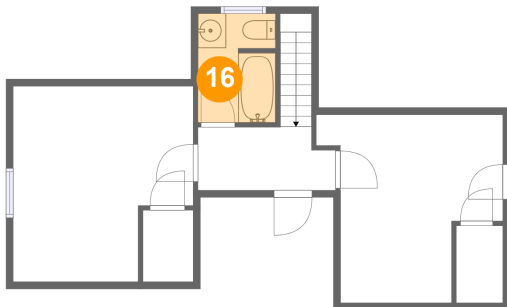
15 Floor 2 - Bedroom



Dimensions: 12'9" x 13'10"
Area: 108 sq. ft
Counted as living area: Yes

Heated: Yes
Finished: Yes
Enclosed: Yes
Contiguous: Yes
Permitted: Yes
Wet space: No
Addition: No
Conversion: No

16 Floor 2 - Bath



Dimensions: 5'6" x 7'8"
Area: 41 sq. ft
Counted as living area: Yes

Heated: Yes
Finished: Yes
Enclosed: Yes
Contiguous: Yes
Permitted: Yes
Wet space: Yes
Addition: No
Conversion: No