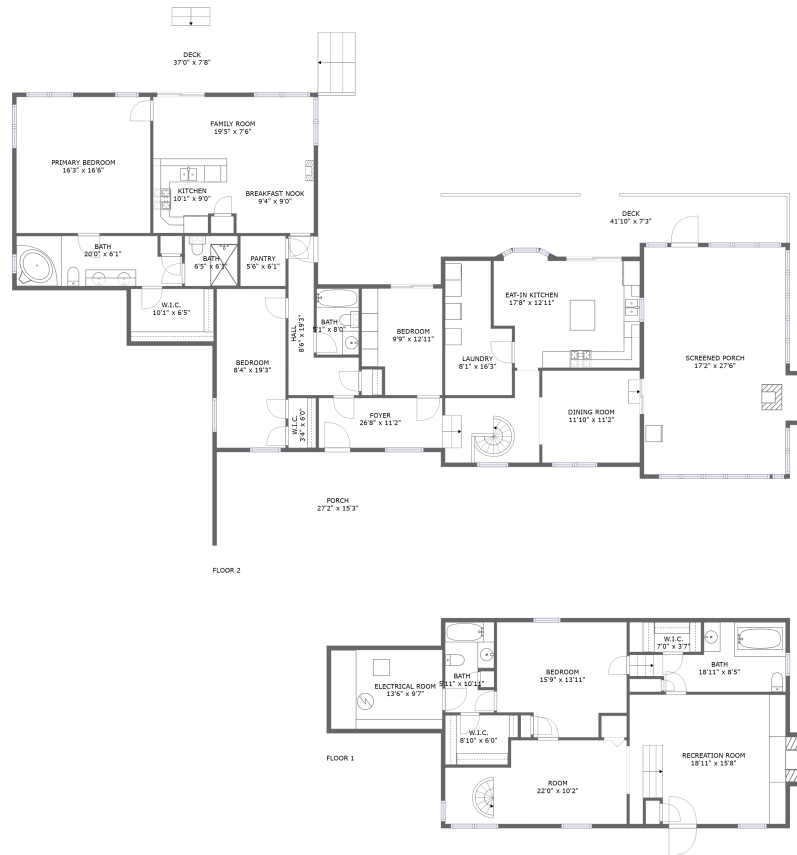


3050 Old Johns River Rd, Collettsville, NC, US

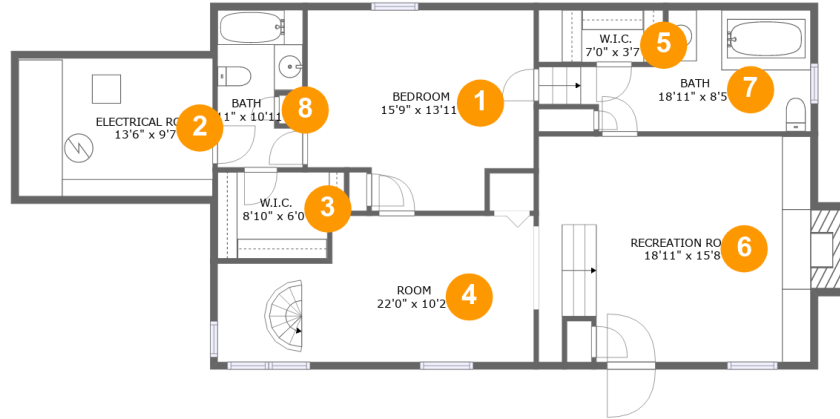


Property Summary

0 garages **4** bedrooms **4** bathrooms **0** half baths

2 floors **3,009** Gross Living Area sqft **4,754** total sqft

3050 Old Johns River Rd, Collettsville, NC, US



Room Dimensions

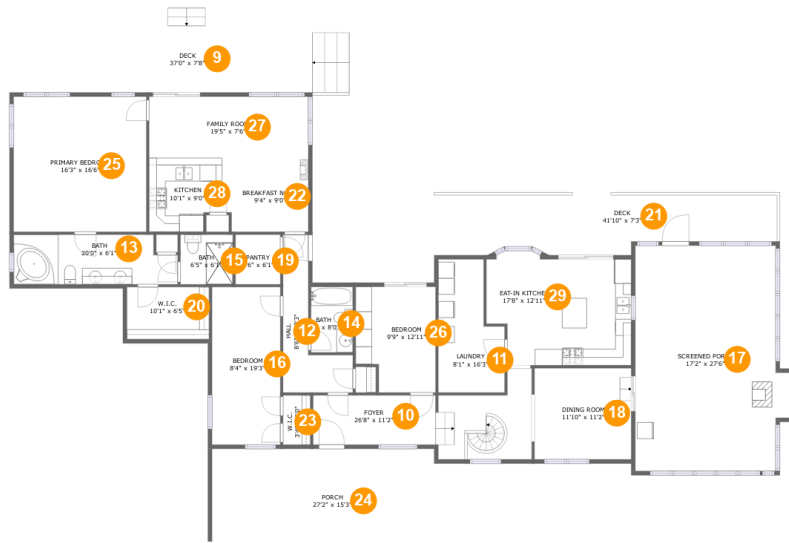
Floor 1

Total sqft: 1234

Living area: 946

#	Room name	Dimensions	Area (sqft)	Counted as Living Area
1	Bedroom	15'9" x 13'11"	196 sq. ft	Yes
2	Electrical Room	13'6" x 9'7"	129 sq. ft	No
3	W.i.c.	8'10" x 6'0"	49 sq. ft	Yes
4	Room	22'0" x 10'2"	197 sq. ft	Yes
5	W.i.c.	7'0" x 3'7"	31 sq. ft	Yes
6	Recreation Room	18'11" x 15'8"	301 sq. ft	Yes
7	Bath	18'11" x 8'5"	116 sq. ft	No
8	Bath	5'11" x 10'11"	59 sq. ft	Yes

3050 Old Johns River Rd, Collettsville, NC, US



Room Dimensions

Floor 2

Total sqft: 3520

Living area: 2063

#	Room name	Dimensions	Area (sqft)	Counted as Living Area
9	Deck	37'0" x 7'8"	284 sq. ft	No
10	Foyer	26'8" x 11'2"	191 sq. ft	Yes
11	Laundry	8'1" x 16'3"	111 sq. ft	Yes
12	Hall	8'6" x 19'3"	84 sq. ft	Yes
13	Bath	20'0" x 6'1"	114 sq. ft	Yes
14	Bath	5'1" x 8'0"	41 sq. ft	Yes
15	Bath	6'5" x 6'1"	39 sq. ft	Yes
16	Bedroom	8'4" x 19'3"	161 sq. ft	Yes
17	Screened Porch	17'2" x 27'6"	484 sq. ft	No
18	Dining Room	11'10" x 11'2"	132 sq. ft	Yes
19	Pantry	5'6" x 6'1"	33 sq. ft	Yes

Scan captured on Wed, 14 Aug 2024 15:12:13 GMT

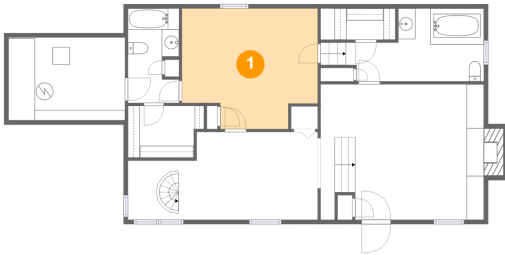
Information is calculated by CubiCasa technology; deemed highly reliable but not guaranteed.

3050 Old Johns River Rd, Collettsville, NC, US

#	Room name	Dimensions	Area (sqft)	Counted as Living Area
20	W.i.c.	10'1" x 6'5"	64 sq. ft	No
21	Deck	41'10" x 7'3"	277 sq. ft	No
22	Breakfast Nook	9'4" x 9'0"	84 sq. ft	Yes
23	W.i.c.	3'4" x 6'0"	20 sq. ft	Yes
24	Porch	27'2" x 15'3"	304 sq. ft	No
25	Primary Bedroom	16'3" x 16'6"	267 sq. ft	Yes
26	Bedroom	9'9" x 12'11"	116 sq. ft	Yes
27	Family Room	19'5" x 7'6"	146 sq. ft	Yes
28	Kitchen	10'1" x 9'0"	83 sq. ft	Yes
29	Eat-in Kitchen	17'8" x 12'11"	216 sq. ft	Yes

3050 Old Johns River Rd, Collettsville, NC, US

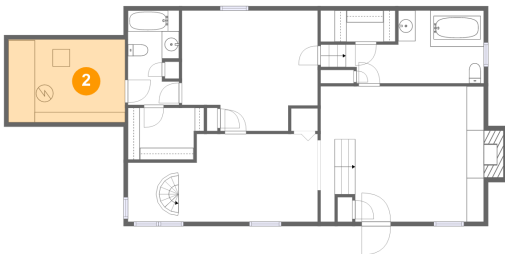
1 Floor 1 - Bedroom



Dimensions: 15'9" x 13'11"
Area: 196 sq. ft
Counted as Living Area:
Yes

Heated: Yes
Finished: Yes
Enclosed: Yes
Contiguous:
Yes
Permitted: Yes
Wet Space: No
Addition: No
Conversion: No

2 Floor 1 - Electrical Room

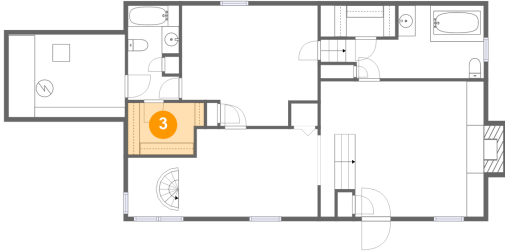


Dimensions: 13'6" x 9'7"
Area: 129 sq. ft
Counted as Living Area: No

Heated: No
Finished: No
Enclosed: Yes
Contiguous: Yes
Permitted: Yes
Wet Space: No
Addition: No
Conversion: No

3050 Old Johns River Rd, Collettsville, NC, US

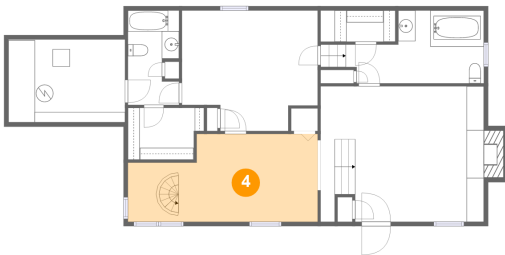
3 Floor 1 - W.i.c.



Dimensions: 8'10" x 6'0"
Area: 49 sq. ft
Counted as Living Area:
Yes

Heated: Yes
Finished: Yes
Enclosed: Yes
Contiguous:
Yes
Permitted: Yes
Wet Space: No
Addition: No
Conversion: No

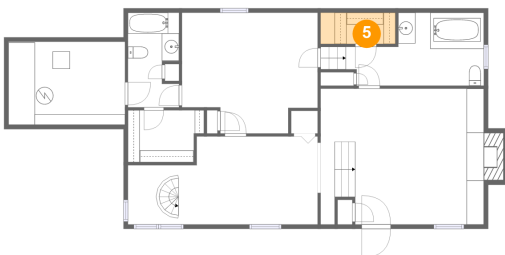
4 Floor 1 - Room



Dimensions: 22'0" x 10'2"
Area: 197 sq. ft
Counted as Living Area:
Yes

Heated: Yes
Finished: Yes
Enclosed: Yes
Contiguous:
Yes
Permitted: Yes
Wet Space: No
Addition: No
Conversion: No

5 Floor 1 - W.i.c.

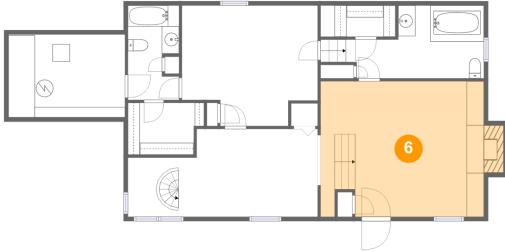


Dimensions: 7'0" x 3'7"
Area: 31 sq. ft
Counted as Living Area:
Yes

Heated: Yes
Finished: Yes
Enclosed: Yes
Contiguous:
Yes
Permitted: Yes
Wet Space: No
Addition: No
Conversion: No

3050 Old Johns River Rd, Collettsville, NC, US

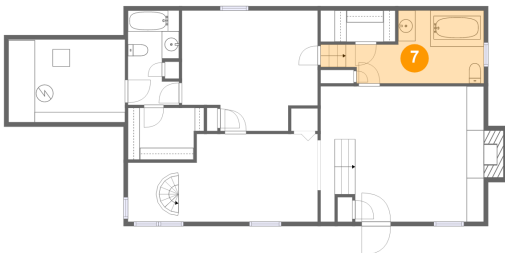
6 Floor 1 - Recreation Room



Dimensions: 18'11" x 15'8"
Area: 301 sq. ft
Counted as Living Area:
Yes

Heated: Yes
Finished: Yes
Enclosed: Yes
Contiguous:
Yes
Permitted: Yes
Wet Space: No
Addition: No
Conversion: No

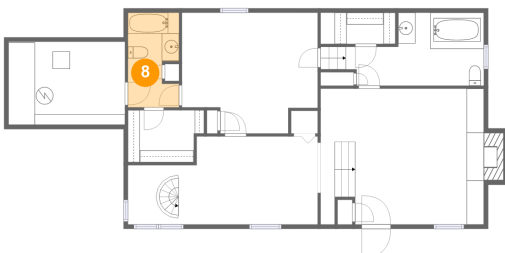
7 Floor 1 - Bath



Dimensions: 18'11" x 8'5"
Area: 116 sq. ft
Counted as Living Area: No

Heated: Yes
Finished: Yes
Enclosed: Yes
Contiguous: Yes
Permitted: Yes
Wet Space: Yes
Addition: No
Conversion: No

8 Floor 1 - Bath

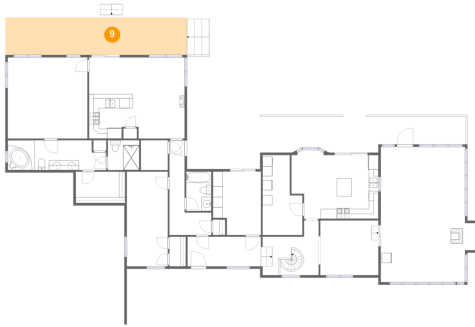


Dimensions: 5'11" x 10'11"
Area: 59 sq. ft
Counted as Living Area:
Yes

Heated: Yes
Finished: Yes
Enclosed: Yes
Contiguous:
Yes
Permitted: Yes
Wet Space: Yes
Addition: No
Conversion: No

3050 Old Johns River Rd, Collettsville, NC, US

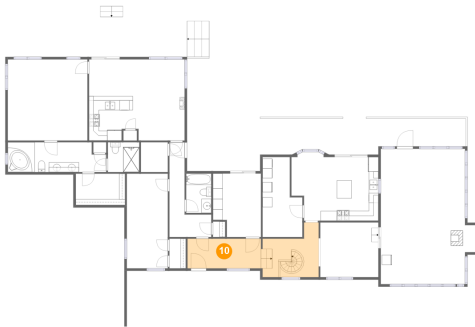
9 Floor 2 - Deck



Dimensions: 37'0" x 7'8"
Area: 284 sq. ft
Counted as Living Area: No

Heated: No
Finished: Yes
Enclosed: No
Contiguous: Yes
Permitted: Yes
Wet Space: No
Addition: No
Conversion: No

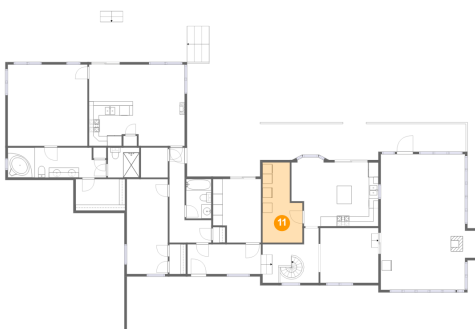
10 Floor 2 - Foyer



Dimensions: 26'8" x 11'2"
Area: 191 sq. ft
Counted as Living Area: Yes

Heated: Yes
Finished: Yes
Enclosed: Yes
Contiguous: Yes
Permitted: Yes
Wet Space: No
Addition: No
Conversion: No

11 Floor 2 - Laundry

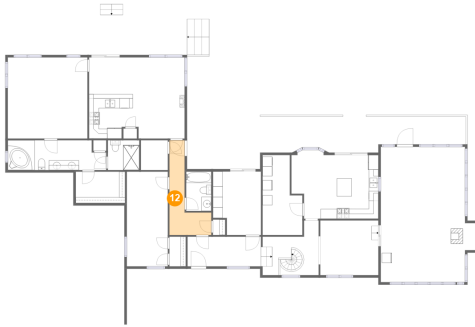


Dimensions: 8'1" x 16'3"
Area: 111 sq. ft
Counted as Living Area: Yes

Heated: Yes
Finished: Yes
Enclosed: Yes
Contiguous: Yes
Permitted: Yes
Wet Space: No
Addition: No
Conversion: No

3050 Old Johns River Rd, Collettsville, NC, US

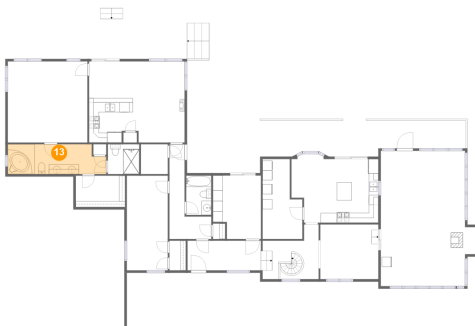
12 Floor 2 - Hall



Dimensions: 8'6" x 19'3"
Area: 84 sq. ft
Counted as Living Area:
Yes

Heated: Yes
Finished: Yes
Enclosed: Yes
Contiguous:
Yes
Permitted: Yes
Wet Space: No
Addition: No
Conversion: No

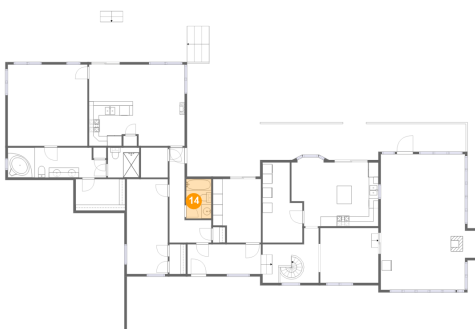
13 Floor 2 - Bath



Dimensions: 20'0" x 6'1"
Area: 114 sq. ft
Counted as Living Area:
Yes

Heated: Yes
Finished: Yes
Enclosed: Yes
Contiguous:
Yes
Permitted: Yes
Wet Space: Yes
Addition: No
Conversion: No

14 Floor 2 - Bath

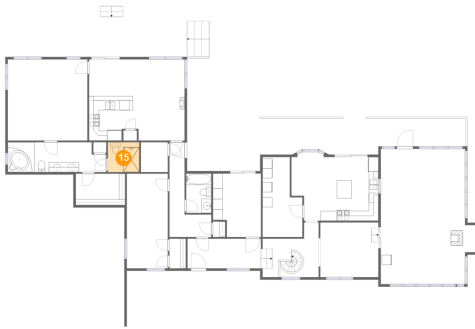


Dimensions: 5'1" x 8'0"
Area: 41 sq. ft
Counted as Living Area:
Yes

Heated: Yes
Finished: Yes
Enclosed: Yes
Contiguous:
Yes
Permitted: Yes
Wet Space: Yes
Addition: No
Conversion: No

3050 Old Johns River Rd, Collettsville, NC, US

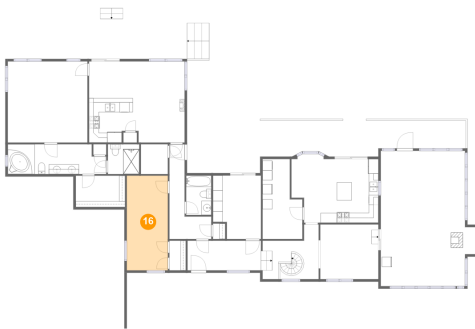
15 Floor 2 - Bath



Dimensions: 6'5" x 6'1"
Area: 39 sq. ft
Counted as Living Area:
Yes

Heated: Yes
Finished: Yes
Enclosed: Yes
Contiguous:
Yes
Permitted: Yes
Wet Space: Yes
Addition: No
Conversion: No

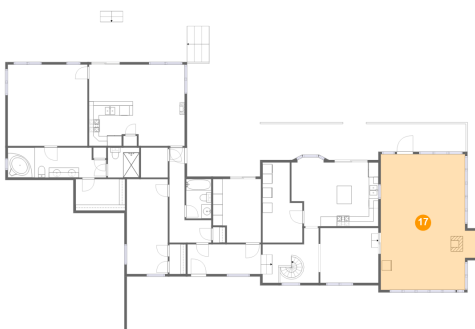
16 Floor 2 - Bedroom



Dimensions: 8'4" x 19'3"
Area: 161 sq. ft
Counted as Living Area:
Yes

Heated: Yes
Finished: Yes
Enclosed: Yes
Contiguous:
Yes
Permitted: Yes
Wet Space: No
Addition: No
Conversion: No

17 Floor 2 - Screened Porch

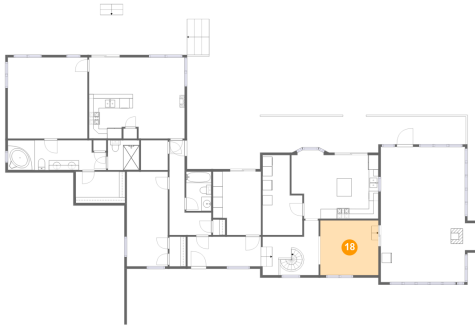


Dimensions: 17'2" x 27'6"
Area: 484 sq. ft
Counted as Living Area: No

Heated: No
Finished: Yes
Enclosed: No
Contiguous: Yes
Permitted: Yes
Wet Space: No
Addition: No
Conversion: No

3050 Old Johns River Rd, Collettsville, NC, US

18 Floor 2 - Dining Room



Dimensions: 11'10" x 11'2"
Area: 132 sq. ft
Counted as Living Area:
Yes

Heated: Yes
Finished: Yes
Enclosed: Yes
Contiguous:
Yes
Permitted: Yes
Wet Space: No
Addition: No
Conversion: No

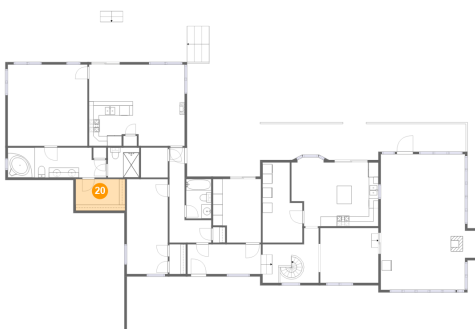
19 Floor 2 - Pantry



Dimensions: 5'6" x 6'1"
Area: 33 sq. ft
Counted as Living Area:
Yes

Heated: Yes
Finished: Yes
Enclosed: Yes
Contiguous:
Yes
Permitted: Yes
Wet Space: No
Addition: No
Conversion: No

20 Floor 2 - W.i.c.

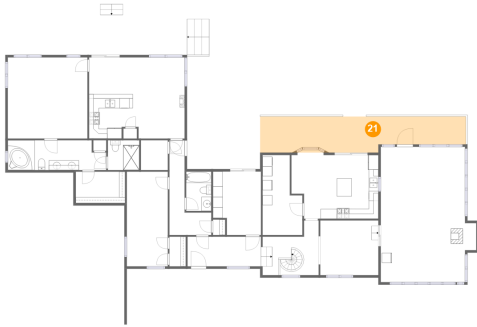


Dimensions: 10'1" x 6'5"
Area: 64 sq. ft
Counted as Living Area: No

Heated: Yes
Finished: Yes
Enclosed: Yes
Contiguous: Yes
Permitted: Yes
Wet Space: No
Addition: No
Conversion: No

3050 Old Johns River Rd, Collettsville, NC, US

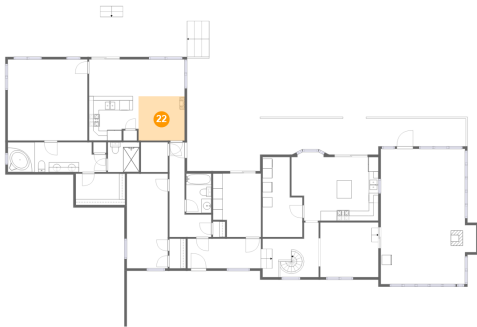
21 Floor 2 - Deck



Dimensions: 41'10" x 7'3"
Area: 277 sq. ft
Counted as Living Area: No

Heated: No
Finished: Yes
Enclosed: No
Contiguous: Yes
Permitted: Yes
Wet Space: No
Addition: No
Conversion: No

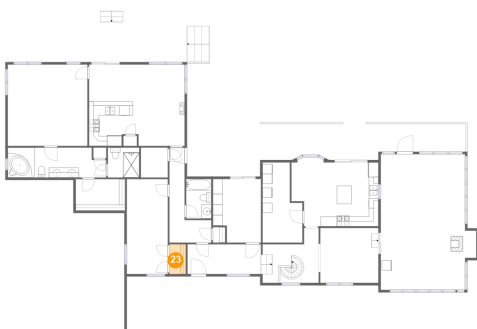
22 Floor 2 - Breakfast Nook



Dimensions: 9'4" x 9'0"
Area: 84 sq. ft
Counted as Living Area: Yes

Heated: Yes
Finished: Yes
Enclosed: Yes
Contiguous: Yes
Permitted: Yes
Wet Space: No
Addition: No
Conversion: No

23 Floor 2 - W.i.c.

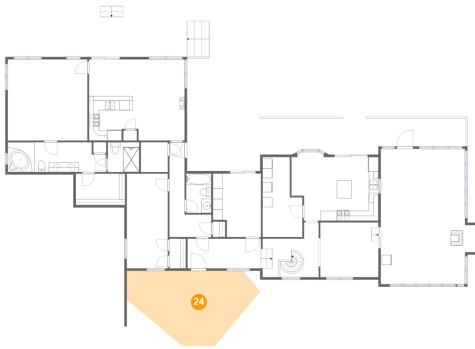


Dimensions: 3'4" x 6'0"
Area: 20 sq. ft
Counted as Living Area: Yes

Heated: Yes
Finished: Yes
Enclosed: Yes
Contiguous: Yes
Permitted: Yes
Wet Space: No
Addition: No
Conversion: No

3050 Old Johns River Rd, Collettsville, NC, US

24 Floor 2 - Porch



Dimensions: 27'2" x 15'3"
Area: 304 sq. ft
Counted as Living Area: No

Heated: No
Finished: Yes
Enclosed: No
Contiguous: Yes
Permitted: Yes
Wet Space: No
Addition: No
Conversion: No

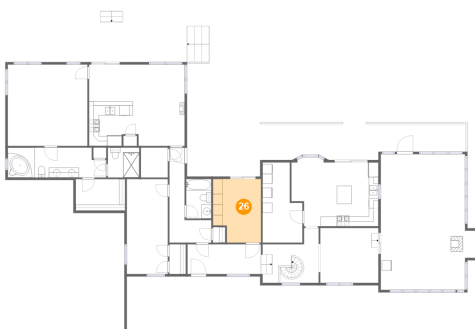
25 Floor 2 - Primary Bedroom



Dimensions: 16'3" x 16'6"
Area: 267 sq. ft
Counted as Living Area: Yes

Heated: Yes
Finished: Yes
Enclosed: Yes
Contiguous: Yes
Permitted: Yes
Wet Space: No
Addition: No
Conversion: No

26 Floor 2 - Bedroom

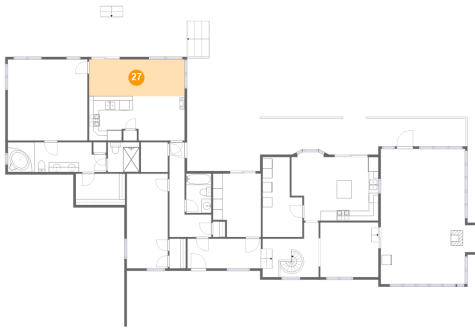


Dimensions: 9'9" x 12'11"
Area: 116 sq. ft
Counted as Living Area: Yes

Heated: Yes
Finished: Yes
Enclosed: Yes
Contiguous: Yes
Permitted: Yes
Wet Space: No
Addition: No
Conversion: No

3050 Old Johns River Rd, Collettsville, NC, US

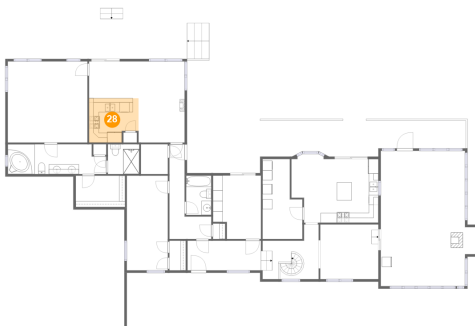
27 Floor 2 - Family Room



Dimensions: 19'5" x 7'6"
Area: 146 sq. ft
Counted as Living Area:
Yes

Heated: Yes
Finished: Yes
Enclosed: Yes
Contiguous:
Yes
Permitted: Yes
Wet Space: No
Addition: No
Conversion: No

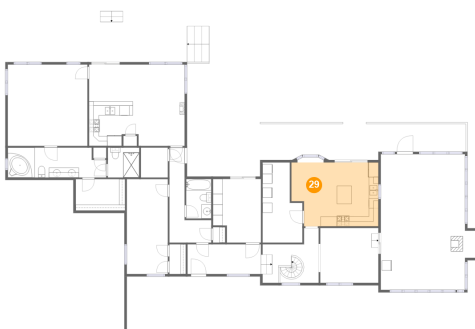
28 Floor 2 - Kitchen



Dimensions: 10'1" x 9'0"
Area: 83 sq. ft
Counted as Living Area:
Yes

Heated: Yes
Finished: Yes
Enclosed: Yes
Contiguous:
Yes
Permitted: Yes
Wet Space: No
Addition: No
Conversion: No

29 Floor 2 - Eat-in Kitchen



Dimensions: 17'8" x 12'11"
Area: 216 sq. ft
Counted as Living Area:
Yes

Heated: Yes
Finished: Yes
Enclosed: Yes
Contiguous:
Yes
Permitted: Yes
Wet Space: No
Addition: No
Conversion: No