

Home report

455 Village Road, Jackson, Waldo County, Maine, United States, 04921



Property summary

0 Garages

3 Bedrooms

2 Bathrooms

0 Half baths

3 Floors

2,125 Gross living area sqft

4,177 Total sqft

Home report

455 Village Road, Jackson, Waldo County, Maine, United States, 04921



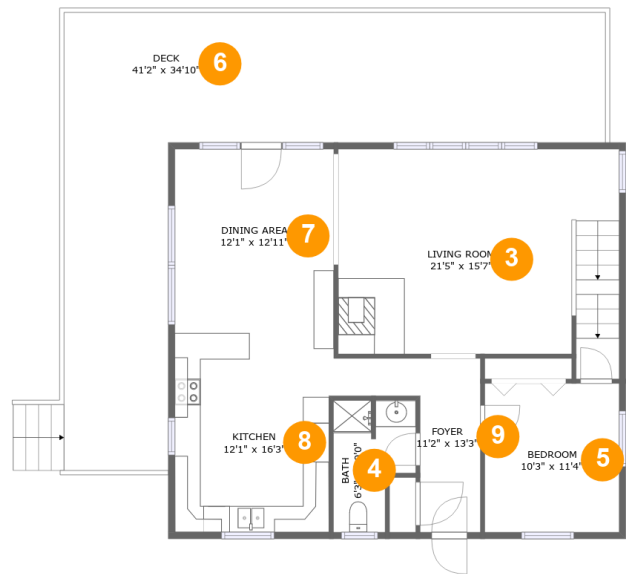
Room dimensions

Floor 1 Total sqft: 1446 Living area: 0

#		Dimensions	sqft	Counted as living area
1	Basement	33'10" x 29'2"	986 sq. ft	No
2	Covered Patio	39'8" x 9'11"	396 sq. ft	No

Home report

455 Village Road, Jackson, Waldo County, Maine, United States, 04921



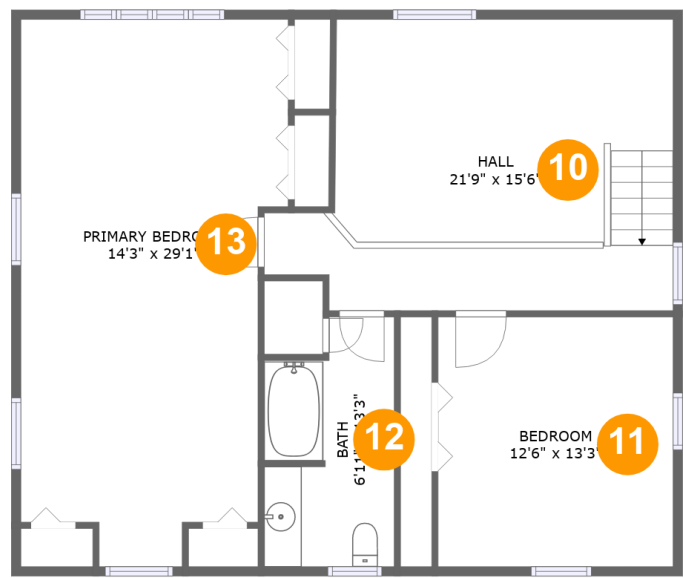
Room dimensions

Floor 2 Total sqft: 1655 Living area: 1049

#		Dimensions	sqft	Counted as living area
3	Living Room	21'5" x 15'7"	338 sq. ft	Yes
4	Bath	6'3" x 10'0"	51 sq. ft	Yes
5	Bedroom	10'3" x 11'4"	116 sq. ft	Yes
6	Deck	41'2" x 34'10"	606 sq. ft	No
7	Dining Area	12'1" x 12'11"	156 sq. ft	Yes
8	Kitchen	12'1" x 16'3"	193 sq. ft	Yes
9	Foyer	11'2" x 13'3"	79 sq. ft	Yes

Home report

455 Village Road, Jackson, Waldo County, Maine, United States, 04921

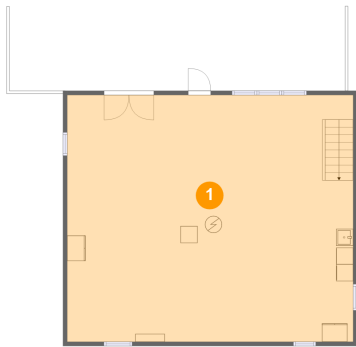


Room dimensions

Floor 3 Total sqft: 1076 Living area: 1076

#		Dimensions	sqft	Counted as living area
10	Hall	21'9" x 15'6"	292 sq. ft	Yes
11	Bedroom	12'6" x 13'3"	166 sq. ft	Yes
12	Bath	6'11" x 13'3"	83 sq. ft	Yes
13	Primary Bedroom	14'3" x 29'1"	364 sq. ft	Yes

1 Floor 1 - Basement



Dimensions: 33'10" x 29'2"
Area: 986 sq. ft
Counted as living area: No

Heated: Yes
Finished: No
Enclosed: Yes
Contiguous: Yes
Permitted: Yes
Wet space: No
Addition: No
Conversion: No

2 Floor 1 - Covered Patio

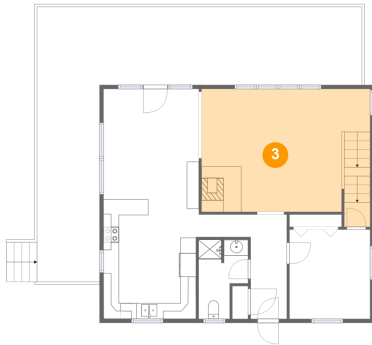


Dimensions: 39'8" x 9'11"
Area: 396 sq. ft
Counted as living area: No

Heated: No
Finished: Yes
Enclosed: No
Contiguous: Yes
Permitted: Yes
Wet space: No
Addition: No
Conversion: No

455 Village Road, Jackson, Waldo County, Maine, United States,
04921

3 Floor 2 - Living Room



Dimensions: 21'5" x 15'7"
Area: 338 sq. ft
Counted as living area: Yes

Heated: Yes
Finished: Yes
Enclosed: Yes
Contiguous: Yes
Permitted: Yes
Wet space: No
Addition: No
Conversion: No

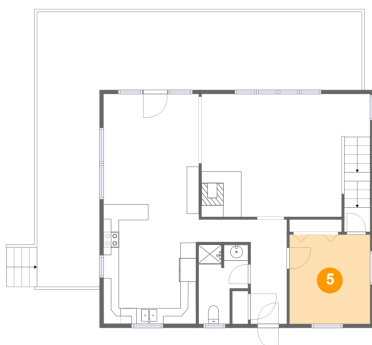
4 Floor 2 - Bath



Dimensions: 6'3" x 10'0"
Area: 51 sq. ft
Counted as living area: Yes

Heated: Yes
Finished: Yes
Enclosed: Yes
Contiguous: Yes
Permitted: Yes
Wet space: Yes
Addition: No
Conversion: No

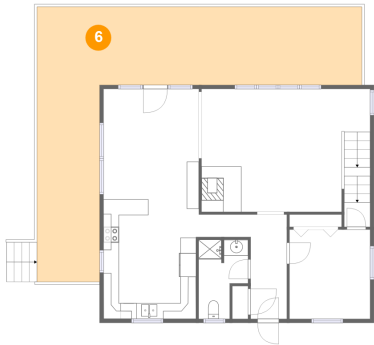
5 Floor 2 - Bedroom



Dimensions: 10'3" x 11'4"
Area: 116 sq. ft
Counted as living area: Yes

Heated: Yes
Finished: Yes
Enclosed: Yes
Contiguous: Yes
Permitted: Yes
Wet space: No
Addition: No
Conversion: No

6 Floor 2 - Deck



Dimensions: 41'2" x 34'10"
Area: 606 sq. ft
Counted as living area: No

Heated: No
Finished: Yes
Enclosed: No
Contiguous: Yes
Permitted: Yes
Wet space: No
Addition: No
Conversion: No

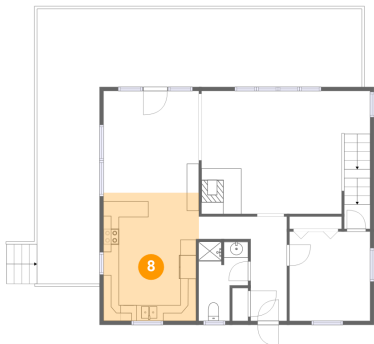
7 Floor 2 - Dining Area



Dimensions: 12'1" x 12'11"
Area: 156 sq. ft
Counted as living area: Yes

Heated: Yes
Finished: Yes
Enclosed: Yes
Contiguous: Yes
Permitted: Yes
Wet space: No
Addition: No
Conversion: No

8 Floor 2 - Kitchen

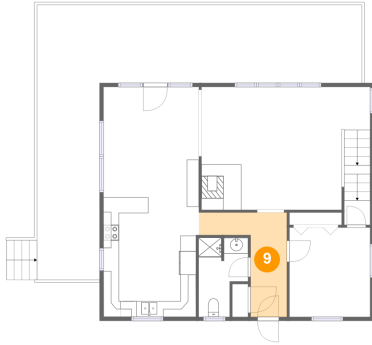


Dimensions: 12'1" x 16'3"
Area: 193 sq. ft
Counted as living area: Yes

Heated: Yes
Finished: Yes
Enclosed: Yes
Contiguous: Yes
Permitted: Yes
Wet space: No
Addition: No
Conversion: No

455 Village Road, Jackson, Waldo County, Maine, United States,
04921

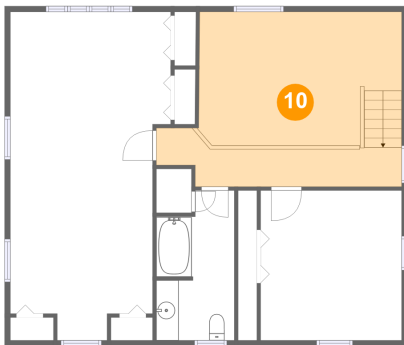
9 Floor 2 - Foyer



Dimensions: 11'2" x 13'3"
Area: 79 sq. ft
Counted as living area: Yes

Heated: Yes
Finished: Yes
Enclosed: Yes
Contiguous: Yes
Permitted: Yes
Wet space: No
Addition: No
Conversion: No

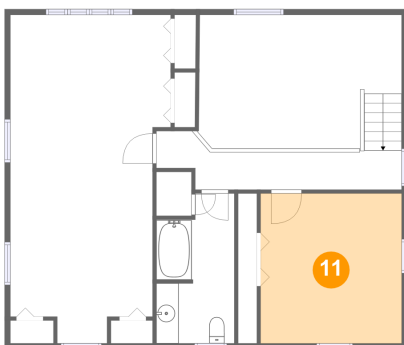
10 Floor 3 - Hall



Dimensions: 21'9" x 15'6"
Area: 292 sq. ft
Counted as living area: Yes

Heated: Yes
Finished: Yes
Enclosed: Yes
Contiguous: Yes
Permitted: Yes
Wet space: No
Addition: No
Conversion: No

11 Floor 3 - Bedroom

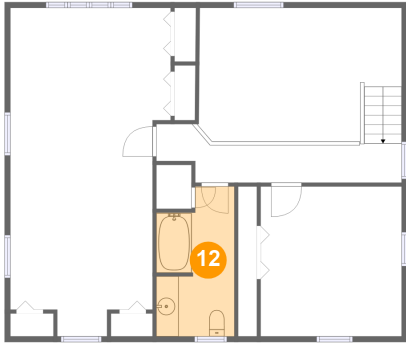


Dimensions: 12'6" x 13'3"
Area: 166 sq. ft
Counted as living area: Yes

Heated: Yes
Finished: Yes
Enclosed: Yes
Contiguous: Yes
Permitted: Yes
Wet space: No
Addition: No
Conversion: No

455 Village Road, Jackson, Waldo County, Maine, United States,
04921

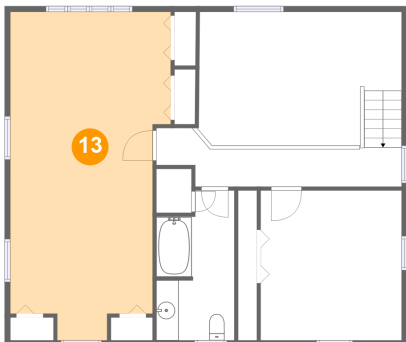
12 Floor 3 - Bath



Dimensions: 6'11" x 13'3"
Area: 83 sq. ft
Counted as living area: Yes

Heated: Yes
Finished: Yes
Enclosed: Yes
Contiguous: Yes
Permitted: Yes
Wet space: Yes
Addition: No
Conversion: No

13 Floor 3 - Primary Bedroom



Dimensions: 14'3" x 29'1"
Area: 364 sq. ft
Counted as living area: Yes

Heated: Yes
Finished: Yes
Enclosed: Yes
Contiguous: Yes
Permitted: Yes
Wet space: No
Addition: No
Conversion: No