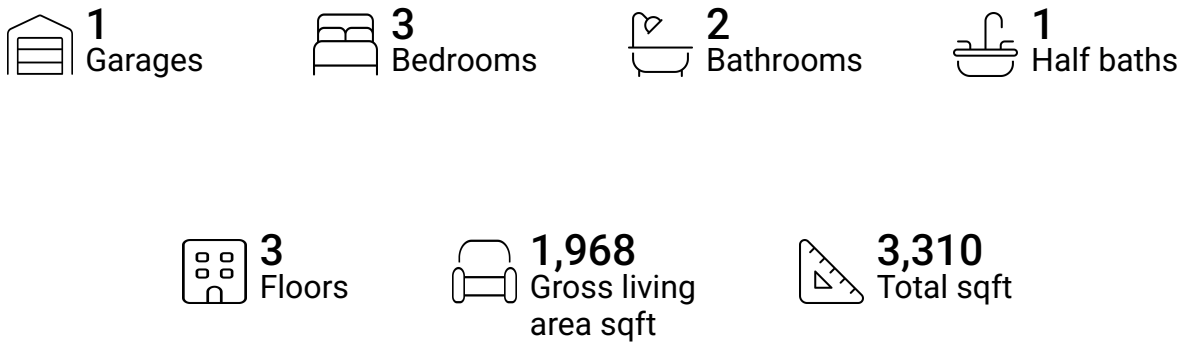


Home report

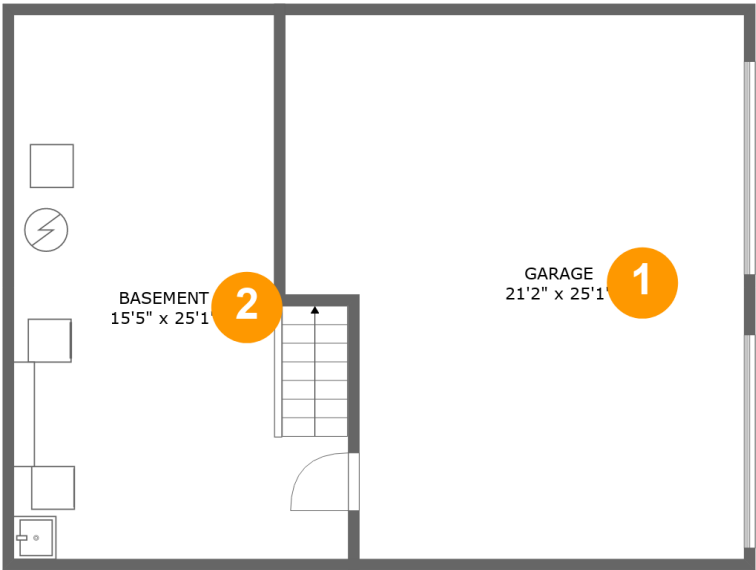
230 Ben Til Dr,Pittsburgh,PA,US



Property summary



230 Ben Til Dr,Pittsburgh,PA,US



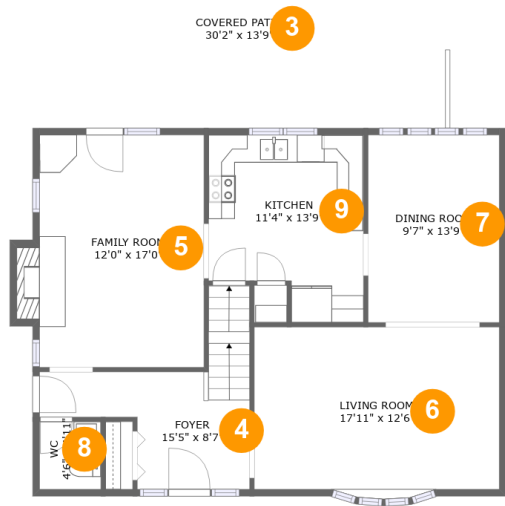
Room dimensions

Floor 1 Total sqft: 904    Living area: 0

#		Dimensions	sqft	Counted as living area
1	Garage	21'2" x 25'1"	489 sq. ft	No
2	Basement	15'5" x 25'1"	341 sq. ft	No

Home report

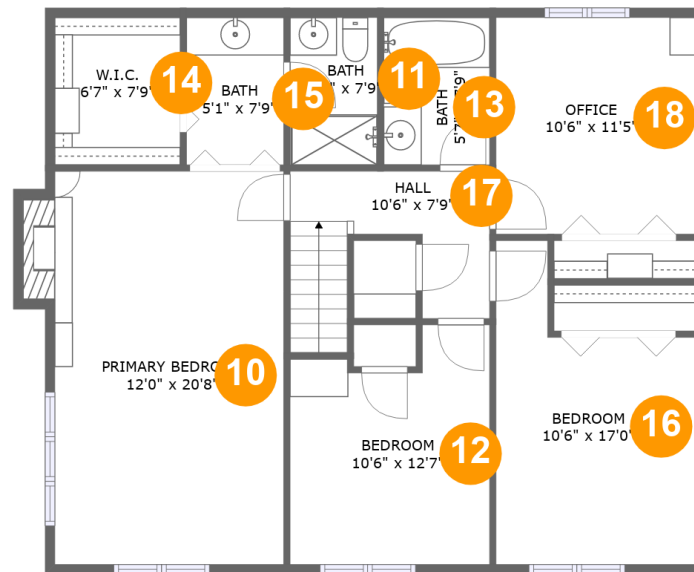
230 Ben Til Dr,Pittsburgh,PA,US



Room dimensions

Floor 2 Total sqft: 1364    Living area: 937

#		Dimensions	sqft	Counted as living area
3	Covered Patio	30'2" x 13'9"	416 sq. ft	No
4	Foyer	15'5" x 8'7"	113 sq. ft	Yes
5	Family Room	12'0" x 17'0"	213 sq. ft	Yes
6	Living Room	17'11" x 12'6"	217 sq. ft	Yes
7	Dining Room	9'7" x 13'9"	132 sq. ft	Yes
8	WC	4'6" x 4'11"	22 sq. ft	Yes
9	Kitchen	11'4" x 13'9"	137 sq. ft	Yes

**230 Ben Til Dr, Pittsburgh, PA, US**

## Room dimensions

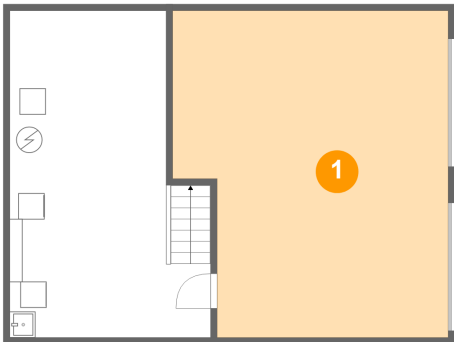
Floor 3

Total sqft: 1042    Living area: 1031

#		Dimensions	sqft	Counted as living area
10	Primary Bedroom	12'0" x 20'8"	258 sq. ft	Yes
11	Bath	4'7" x 7'9"	36 sq. ft	Yes
12	Bedroom	10'6" x 12'7"	117 sq. ft	Yes
13	Bath	5'7" x 7'9"	43 sq. ft	Yes
14	W.I.C.	6'7" x 7'9"	51 sq. ft	Yes
15	Bath	5'1" x 7'9"	40 sq. ft	Yes
16	Bedroom	10'6" x 17'0"	139 sq. ft	Yes
17	Hall	10'6" x 7'9"	69 sq. ft	Yes
18	Office	10'6" x 11'5"	119 sq. ft	Yes

230 Ben Til Dr,Pittsburgh,PA,US

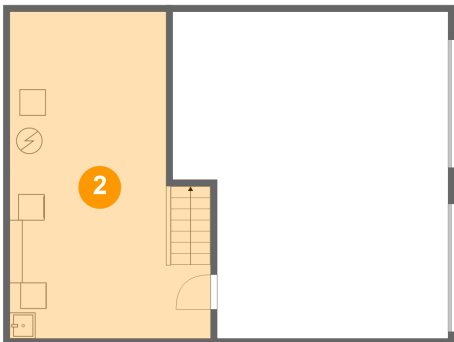
**1 Floor 1 - Garage**



Dimensions: 21'2" x 25'1"  
Area: 489 sq. ft  
Counted as living area: No

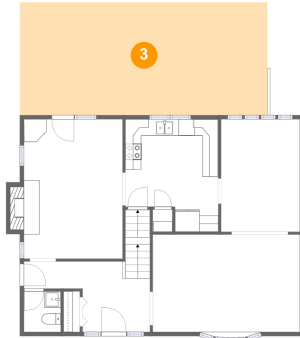
Heated: No  
Finished: No  
Enclosed: Yes  
Contiguous: Yes  
Permitted: Yes  
Wet space: No  
Addition: No  
Conversion: No

**2 Floor 1 - Basement**



Dimensions: 15'5" x 25'1"  
Area: 341 sq. ft  
Counted as living area: No

Heated: Yes  
Finished: No  
Enclosed: Yes  
Contiguous: Yes  
Permitted: Yes  
Wet space: No  
Addition: No  
Conversion: No

**3 Floor 2 - Covered Patio**

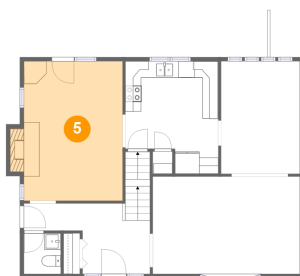
Dimensions: 30'2" x 13'9"  
Area: 416 sq. ft  
Counted as living area: No

Heated: No  
Finished: Yes  
Enclosed: No  
Contiguous: Yes  
Permitted: Yes  
Wet space: No  
Addition: No  
Conversion: No

**4 Floor 2 - Foyer**

Dimensions: 15'5" x 8'7"  
Area: 113 sq. ft  
Counted as living area: Yes

Heated: Yes  
Finished: Yes  
Enclosed: Yes  
Contiguous: Yes  
Permitted: Yes  
Wet space: No  
Addition: No  
Conversion: No

**5 Floor 2 - Family Room**

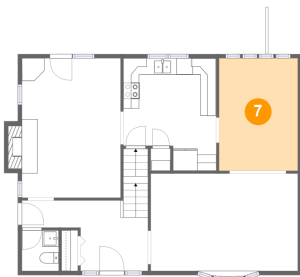
Dimensions: 12'0" x 17'0"  
Area: 213 sq. ft  
Counted as living area: Yes

Heated: Yes  
Finished: Yes  
Enclosed: Yes  
Contiguous: Yes  
Permitted: Yes  
Wet space: No  
Addition: No  
Conversion: No

**230 Ben Til Dr, Pittsburgh, PA, US****6 Floor 2 - Living Room**

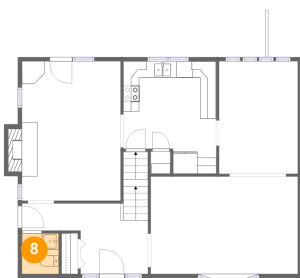
Dimensions: 17'11" x 12'6"  
Area: 217 sq. ft  
Counted as living area: Yes

Heated: Yes  
Finished: Yes  
Enclosed: Yes  
Contiguous: Yes  
Permitted: Yes  
Wet space: No  
Addition: No  
Conversion: No

**7 Floor 2 - Dining Room**

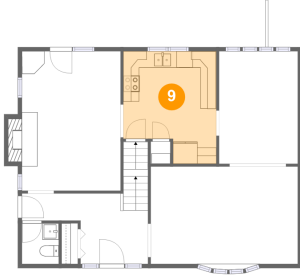
Dimensions: 9'7" x 13'9"  
Area: 132 sq. ft  
Counted as living area: Yes

Heated: Yes  
Finished: Yes  
Enclosed: Yes  
Contiguous: Yes  
Permitted: Yes  
Wet space: No  
Addition: No  
Conversion: No

**8 Floor 2 - WC**

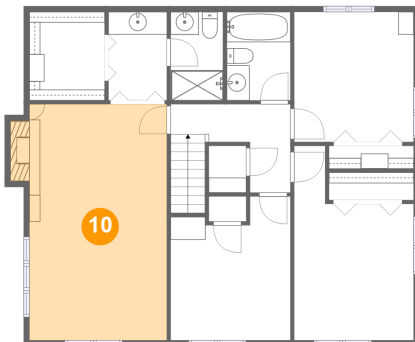
Dimensions: 4'6" x 4'11"  
Area: 22 sq. ft  
Counted as living area: Yes

Heated: Yes  
Finished: Yes  
Enclosed: Yes  
Contiguous: Yes  
Permitted: Yes  
Wet space: Yes  
Addition: No  
Conversion: No

**230 Ben Til Dr, Pittsburgh, PA, US****9 Floor 2 - Kitchen**

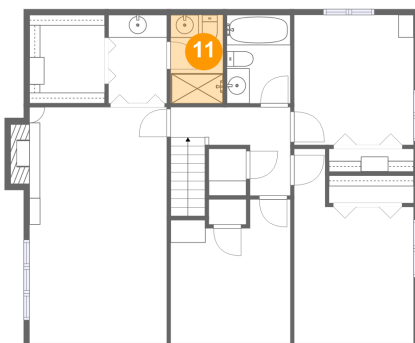
Dimensions: 11'4" x 13'9"  
Area: 137 sq. ft  
Counted as living area: Yes

Heated: Yes  
Finished: Yes  
Enclosed: Yes  
Contiguous: Yes  
Permitted: Yes  
Wet space: No  
Addition: No  
Conversion: No

**10 Floor 3 - Primary Bedroom**

Dimensions: 12'0" x 20'8"  
Area: 258 sq. ft  
Counted as living area: Yes

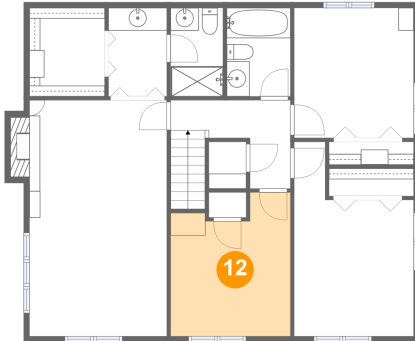
Heated: Yes  
Finished: Yes  
Enclosed: Yes  
Contiguous: Yes  
Permitted: Yes  
Wet space: No  
Addition: No  
Conversion: No

**11 Floor 3 - Bath**

Dimensions: 4'7" x 7'9"  
Area: 36 sq. ft  
Counted as living area: Yes

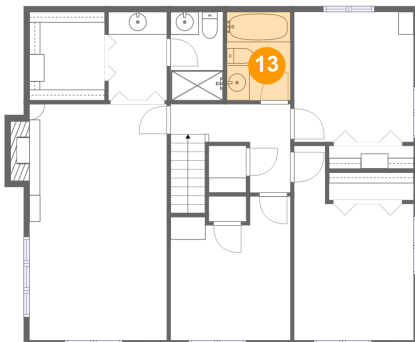
Heated: Yes  
Finished: Yes  
Enclosed: Yes  
Contiguous: Yes  
Permitted: Yes  
Wet space: Yes  
Addition: No  
Conversion: No



**12 Floor 3 - Bedroom**

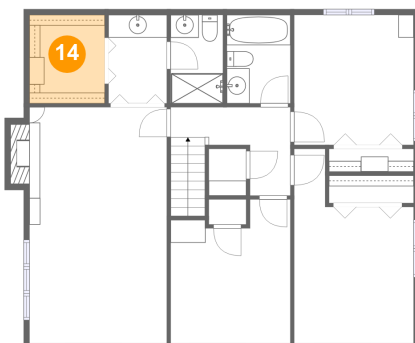
Dimensions: 10'6" x 12'7"  
Area: 117 sq. ft  
Counted as living area: Yes

Heated: Yes  
Finished: Yes  
Enclosed: Yes  
Contiguous: Yes  
Permitted: Yes  
Wet space: No  
Addition: No  
Conversion: No

**13 Floor 3 - Bath**

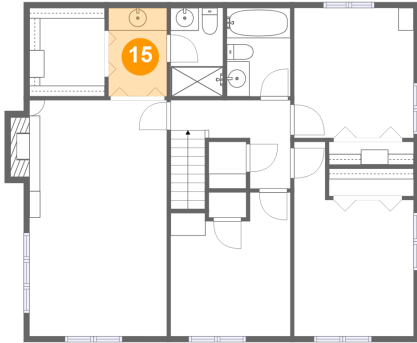
Dimensions: 5'7" x 7'9"  
Area: 43 sq. ft  
Counted as living area: Yes

Heated: Yes  
Finished: Yes  
Enclosed: Yes  
Contiguous: Yes  
Permitted: Yes  
Wet space: Yes  
Addition: No  
Conversion: No

**14 Floor 3 - W.I.C.**

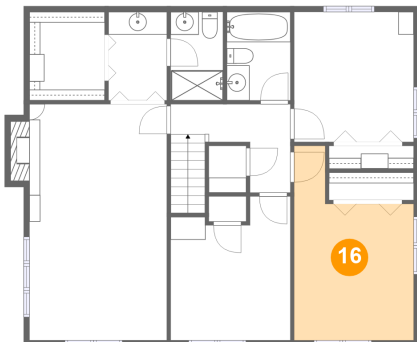
Dimensions: 6'7" x 7'9"  
Area: 51 sq. ft  
Counted as living area: Yes

Heated: Yes  
Finished: Yes  
Enclosed: Yes  
Contiguous: Yes  
Permitted: Yes  
Wet space: No  
Addition: No  
Conversion: No

**15 Floor 3 - Bath**

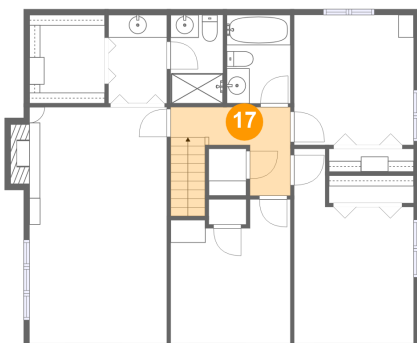
Dimensions: 5'1" x 7'9"  
Area: 40 sq. ft  
Counted as living area: Yes

Heated: Yes  
Finished: Yes  
Enclosed: Yes  
Contiguous: Yes  
Permitted: Yes  
Wet space: Yes  
Addition: No  
Conversion: No

**16 Floor 3 - Bedroom**

Dimensions: 10'6" x 17'0"  
Area: 139 sq. ft  
Counted as living area: Yes

Heated: Yes  
Finished: Yes  
Enclosed: Yes  
Contiguous: Yes  
Permitted: Yes  
Wet space: No  
Addition: No  
Conversion: No

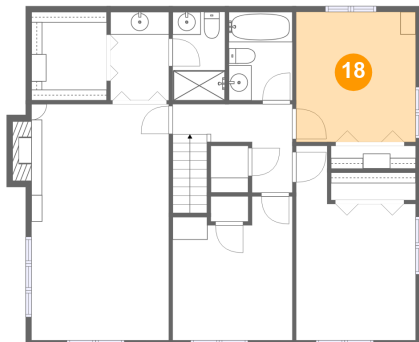
**17 Floor 3 - Hall**

Dimensions: 10'6" x 7'9"  
Area: 69 sq. ft  
Counted as living area: Yes

Heated: Yes  
Finished: Yes  
Enclosed: Yes  
Contiguous: Yes  
Permitted: Yes  
Wet space: No  
Addition: No  
Conversion: No

230 Ben Til Dr,Pittsburgh,PA,US

## 18 Floor 3 - Office



Dimensions: 10'6" x 11'5"

Area: 119 sq. ft

Counted as living area: Yes

Heated: Yes

Finished: Yes

Enclosed: Yes

Contiguous: Yes

Permitted: Yes

Wet space: No

Addition: No

Conversion: No