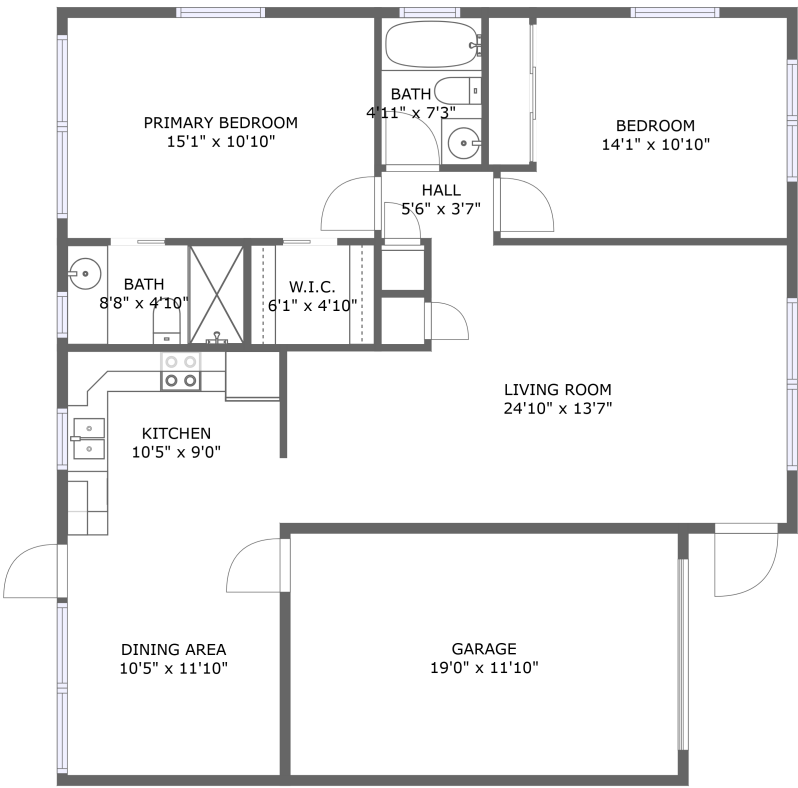


8445 Calais, Pinellas Park, Pinellas County, Florida,
United States, 33781



FLOOR 1

Property summary



1
Garages



2
Bedrooms



2
Bathrooms



0
Half baths



1
Floors

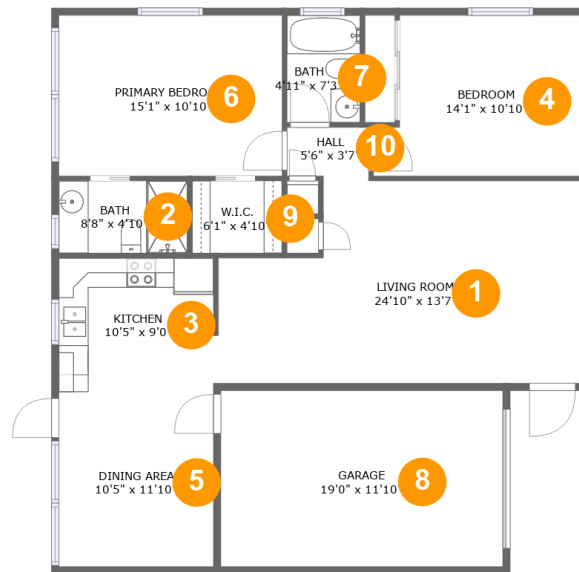


1,078
Gross living
area sqft



1,319
Total sqft

**8445 Calais, Pinellas Park, Pinellas County, Florida,
United States, 33781**



Room dimensions

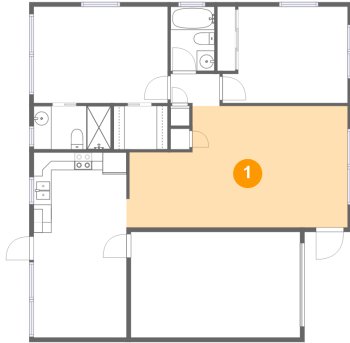
Floor 1

Total sqft: 1319 Living area: 1078

#		Dimensions	sqft	Counted as living area
1	Living Room	24'10" x 13'7"	299 sq. ft	Yes
2	Bath	8'8" x 4'10"	42 sq. ft	Yes
3	Kitchen	10'5" x 9'0"	94 sq. ft	Yes
4	Bedroom	14'1" x 10'10"	139 sq. ft	Yes
5	Dining Area	10'5" x 11'10"	123 sq. ft	Yes
6	Primary Bedroom	15'1" x 10'10"	163 sq. ft	Yes
7	Bath	4'11" x 7'3"	36 sq. ft	Yes
8	Garage	19'0" x 11'10"	226 sq. ft	No
9	W.I.C.	6'1" x 4'10"	30 sq. ft	Yes
10	Hall	5'6" x 3'7"	19 sq. ft	Yes

**8445 Calais, Pinellas Park, Pinellas County, Florida,
United States, 33781**

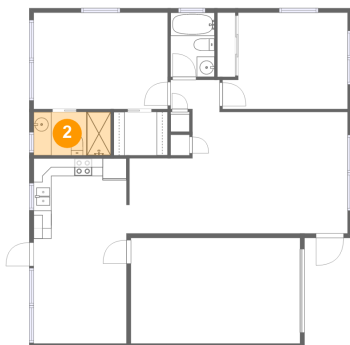
1 Floor 1 - Living Room



Dimensions: 24'10" x 13'7"
Area: 299 sq. ft
Counted as living area: Yes

Heated: Yes
Finished: Yes
Enclosed: Yes
Contiguous: Yes
Permitted: Yes
Wet space: No
Addition: No
Conversion: No

2 Floor 1 - Bath



Dimensions: 8'8" x 4'10"
Area: 42 sq. ft
Counted as living area: Yes

Heated: Yes
Finished: Yes
Enclosed: Yes
Contiguous: Yes
Permitted: Yes
Wet space: Yes
Addition: No
Conversion: No

**8445 Calais, Pinellas Park, Pinellas County, Florida,
United States, 33781**

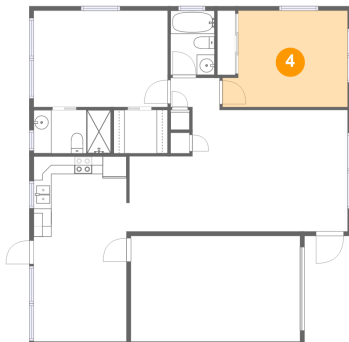
3 Floor 1 - Kitchen



Dimensions: 10'5" x 9'0"
Area: 94 sq. ft
Counted as living area: Yes

Heated: Yes
Finished: Yes
Enclosed: Yes
Contiguous: Yes
Permitted: Yes
Wet space: No
Addition: No
Conversion: No

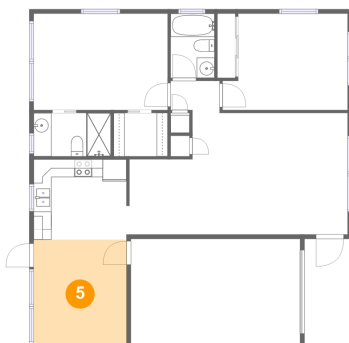
4 Floor 1 - Bedroom



Dimensions: 14'1" x 10'10"
Area: 139 sq. ft
Counted as living area: Yes

Heated: Yes
Finished: Yes
Enclosed: Yes
Contiguous: Yes
Permitted: Yes
Wet space: No
Addition: No
Conversion: No

5 Floor 1 - Dining Area

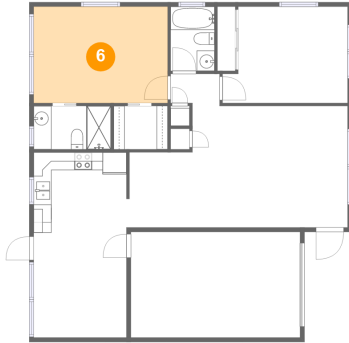


Dimensions: 10'5" x 11'10"
Area: 123 sq. ft
Counted as living area: Yes

Heated: Yes
Finished: Yes
Enclosed: Yes
Contiguous: Yes
Permitted: Yes
Wet space: No
Addition: No
Conversion: No

**8445 Calais, Pinellas Park, Pinellas County, Florida,
United States, 33781**

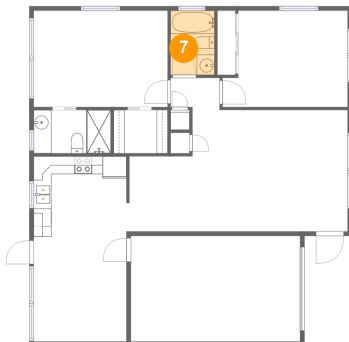
6 Floor 1 - Primary Bedroom



Dimensions: 15'1" x 10'10"
Area: 163 sq. ft
Counted as living area: Yes

Heated: Yes
Finished: Yes
Enclosed: Yes
Contiguous: Yes
Permitted: Yes
Wet space: No
Addition: No
Conversion: No

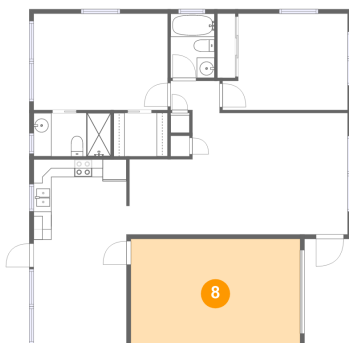
7 Floor 1 - Bath



Dimensions: 4'11" x 7'3"
Area: 36 sq. ft
Counted as living area: Yes

Heated: Yes
Finished: Yes
Enclosed: Yes
Contiguous: Yes
Permitted: Yes
Wet space: Yes
Addition: No
Conversion: No

8 Floor 1 - Garage

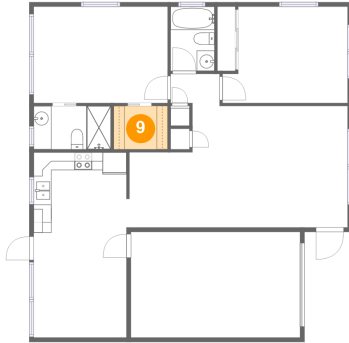


Dimensions: 19'0" x 11'10"
Area: 226 sq. ft
Counted as living area: No

Heated: No
Finished: No
Enclosed: Yes
Contiguous: Yes
Permitted: Yes
Wet space: No
Addition: No
Conversion: No

**8445 Calais, Pinellas Park, Pinellas County, Florida,
United States, 33781**

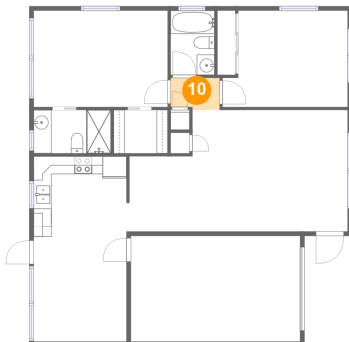
9 Floor 1 - W.I.C.



Dimensions: 6'1" x 4'10"
Area: 30 sq. ft
Counted as living area: Yes

Heated: Yes
Finished: Yes
Enclosed: Yes
Contiguous: Yes
Permitted: Yes
Wet space: No
Addition: No
Conversion: No

10 Floor 1 - Hall



Dimensions: 5'6" x 3'7"
Area: 19 sq. ft
Counted as living area: Yes

Heated: Yes
Finished: Yes
Enclosed: Yes
Contiguous: Yes
Permitted: Yes
Wet space: No
Addition: No
Conversion: No